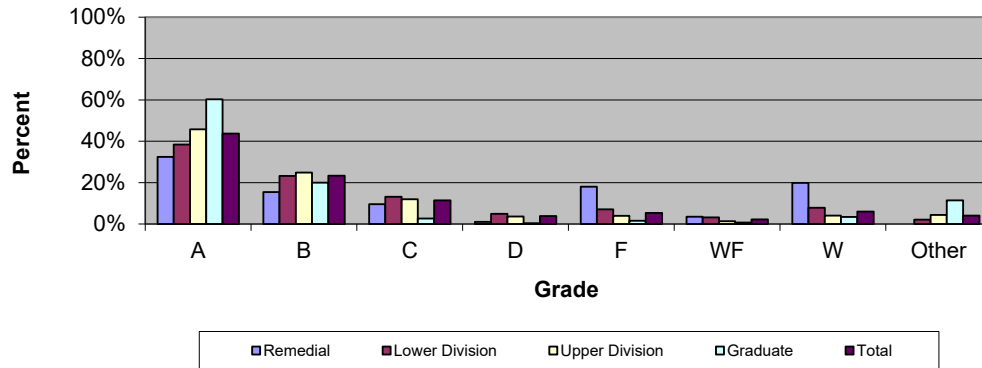


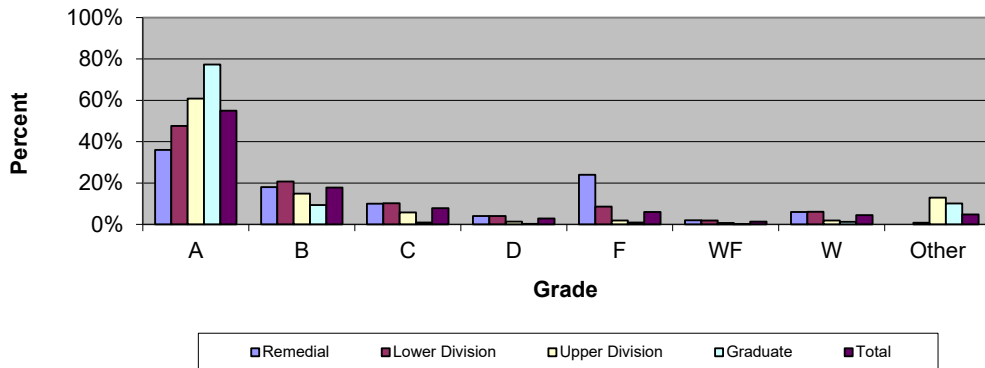
## CSU Facts & Figures 2021: Grade Distribution

Grade Distribution of Full-Time Faculty for 2020-21



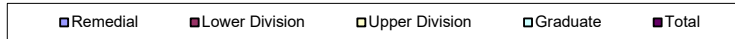
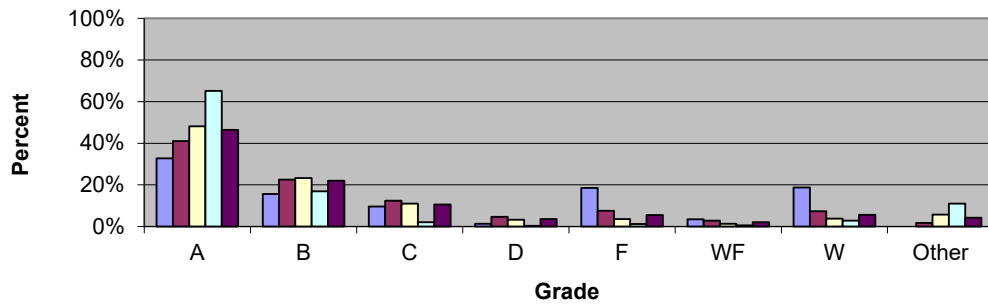
Grade Distribution by Level of Instruction									
Full-Time Faculty	A's	B's	C's	D's	F's	WF's	W's	Other	Total
<b>2017-2018</b>									
Remedial	73	95	70	2	68	14	6	0	328
Percent	22.3%	29.0%	21.3%	0.6%	20.7%	4.3%	1.8%	0.0%	100.0%
Lower Division	8,329	6,667	4,384	1,707	1,576	644	538	348	24,193
Percent	34.4%	27.6%	18.1%	7.1%	6.5%	2.7%	2.2%	1.4%	100.0%
Upper Division	8,324	4,775	2,395	636	501	229	303	908	18,071
Percent	46.1%	26.4%	13.3%	3.5%	2.8%	1.3%	1.7%	5.0%	100.0%
Graduate	4,732	950	132	27	93	45	88	672	6,739
Percent	70.2%	14.1%	2.0%	0.4%	1.5%	0.7%	1.3%	10.0%	100.2%
Total	21,458	12,487	6,981	2,372	2,238	932	935	1,928	49,331
Percent	43.5%	25.3%	14.2%	4.8%	4.5%	1.9%	1.9%	3.9%	100.0%
<b>2018-2019</b>									
Remedial	202	87	63	0	39	12	2	0	405
Percent	49.9%	21.5%	15.6%	0.0%	9.6%	3.0%	0.5%	0.0%	100.0%
Lower Division	8,873	6,693	4,469	1,847	1,714	677	641	469	25,383
Percent	35.0%	26.4%	17.6%	7.3%	6.8%	2.7%	2.5%	1.8%	100.0%
Upper Division	8,366	5,165	2,546	637	570	217	289	1,018	18,808
Percent	44.5%	27.5%	13.5%	3.4%	3.0%	1.2%	1.5%	5.4%	100.0%
Graduate	3,796	889	165	36	62	44	105	680	5,777
Percent	65.7%	15.4%	2.9%	0.6%	1.2%	0.8%	1.8%	11.8%	100.1%
Total	21,237	12,834	7,243	2,520	2,385	950	1,037	2,167	50,373
Percent	42.2%	25.5%	14.4%	5.0%	4.7%	1.9%	2.1%	4.3%	100.0%
<b>2019-2020</b>									
Remedial	214	72	56	10	44	14	13	0	423
Percent	50.6%	17.0%	13.2%	2.4%	10.4%	3.3%	3.1%	0.0%	100.0%
Lower Division	9,620	6,474	3,817	1,314	1,174	291	1,453	417	24,560
Percent	39.2%	26.4%	15.5%	5.4%	4.8%	1.2%	5.9%	1.7%	100.0%
Upper Division	8,862	5,011	2,402	550	463	118	701	925	19,032
Percent	46.6%	26.3%	12.6%	2.9%	2.4%	0.6%	3.7%	4.9%	100.0%
Graduate	3,455	924	151	24	39	24	147	770	5,534
Percent	62.4%	16.7%	2.7%	0.4%	0.8%	0.4%	2.7%	13.9%	100.1%
Total	22,151	12,481	6,426	1,898	1,720	447	2,314	2,112	49,549
Percent	44.7%	25.2%	13.0%	3.8%	3.5%	0.9%	4.7%	4.3%	100.0%
<b>2020-2021</b>									
Remedial	183	87	54	6	102	20	112	0	564
Percent	32.4%	15.4%	9.6%	1.1%	18.1%	3.5%	19.9%	0.0%	100.0%
Lower Division	9,898	5,989	3,397	1,267	1,831	824	2,014	553	25,773
Percent	38.4%	23.2%	13.2%	4.9%	7.1%	3.2%	7.8%	2.1%	100.0%
Upper Division	8,595	4,669	2,251	682	735	257	768	821	18,778
Percent	45.8%	24.9%	12.0%	3.6%	3.9%	1.4%	4.1%	4.4%	100.0%
Graduate	3,879	1,283	167	25	87	44	218	732	6,435
Percent	60.3%	19.9%	2.6%	0.4%	1.5%	0.7%	3.4%	11.4%	100.2%
Total	22,555	12,028	5,869	1,980	2,755	1,145	3,112	2,106	51,550
Percent	43.8%	23.3%	11.4%	3.8%	5.3%	2.2%	6.0%	4.1%	100.0%

Grade Distribution of Part-Time Faculty for 2020-21



Grade Distribution by Level of Instruction									
Part-Time Faculty	A's	B's	C's	D's	F's	WF's	W's	Other	Total
<b>2017-2018</b>									
Remedial	17	28	23	4	13	14	5	0	104
Percent	16.3%	26.9%	22.1%	3.8%	12.5%	13.5%	4.8%	0.0%	100.0%
Lower Division	5,901	3,307	1,586	527	701	300	232	63	12,617
Percent	46.8%	26.2%	12.6%	4.2%	5.6%	2.4%	1.8%	0.5%	100.0%
Upper Division	2,295	694	273	47	78	26	40	438	3,891
Percent	59.0%	17.8%	7.0%	1.2%	2.0%	0.7%	1.0%	11.3%	100.0%
Graduate	2,335	340	50	7	23	17	43	695	3,510
Percent	66.5%	9.7%	1.4%	0.2%	0.7%	0.5%	1.2%	19.8%	100.0%
Total	10,548	4,369	1,932	585	815	357	320	1,196	20,122
Percent	52.4%	21.7%	9.6%	2.9%	4.1%	1.8%	1.6%	5.9%	100.0%
<b>2018-2019</b>									
Remedial	2	1	12	0	1	1	0	0	17
Percent	11.8%	5.9%	70.6%	0.0%	5.9%	5.9%	0.0%	0.0%	100.0%
Lower Division	5,567	2,644	1,349	442	661	267	250	86	11,266
Percent	49.4%	23.5%	12.0%	3.9%	5.9%	2.4%	2.2%	0.8%	100.0%
Upper Division	2,304	687	308	71	79	19	29	421	3,918
Percent	58.8%	17.5%	7.9%	1.8%	2.0%	0.5%	0.7%	10.7%	100.0%
Graduate	1,963	309	58	5	31	11	26	346	2,749
Percent	71.4%	11.2%	2.1%	0.2%	1.1%	0.4%	0.9%	12.6%	100.0%
Total	9,836	3,641	1,727	518	772	298	305	853	17,950
Percent	54.8%	20.3%	9.6%	2.9%	4.3%	1.7%	1.7%	4.8%	100.0%
<b>2019-2020</b>									
Remedial	2	0	0	0	0	0	0	0	2
Percent	100.0%	0.0%	0.0%	0.0%	0.0%	0.0%	0.0%	0.0%	100.0%
Lower Division	5,275	2,199	993	285	422	102	495	75	9,846
Percent	53.6%	22.3%	10.1%	2.9%	4.3%	1.0%	5.0%	0.8%	100.0%
Upper Division	2,110	580	182	36	37	8	62	372	3,387
Percent	62.3%	17.1%	5.4%	1.1%	1.1%	0.2%	1.8%	11.0%	100.0%
Graduate	1,921	255	46	4	18	7	35	223	2,509
Percent	76.6%	10.2%	1.8%	0.2%	0.7%	0.3%	1.4%	8.9%	100.0%
Total	9,308	3,034	1,221	325	477	117	592	670	15,744
Percent	59.1%	19.3%	7.8%	2.1%	3.0%	0.7%	3.8%	4.3%	100.0%
<b>2020-2021</b>									
Remedial	18	9	5	2	12	1	3	0	50
Percent	36.0%	18.0%	10.0%	4.0%	24.0%	2.0%	6.0%	0.0%	100.0%
Lower Division	4,913	2,145	1,060	412	891	196	626	80	10,323
Percent	47.6%	20.8%	10.3%	4.0%	8.6%	1.9%	6.1%	0.8%	100.0%
Upper Division	2,092	513	198	47	63	22	64	443	3,442
Percent	60.8%	14.9%	5.8%	1.4%	1.8%	0.6%	1.9%	12.9%	100.0%
Graduate	1,963	236	22	6	22	2	30	257	2,538
Percent	77.3%	9.3%	0.9%	0.2%	0.9%	0.1%	1.2%	10.1%	100.0%
Total	8,986	2,903	1,285	467	988	221	723	780	16,353
Percent	55.0%	17.8%	7.9%	2.9%	6.0%	1.4%	4.4%	4.8%	100.0%

## Grade Distribution of All Faculty for 2020-21



Grade Distribution by Level of Instruction									
All Faculty	A's	B's	C's	D's	F's	WF's	W's	Other	Total
<b>2017-2018</b>									
Remedial	90	123	93	6	81	28	11	0	432
Percent	20.8%	28.5%	21.5%	1.4%	18.8%	6.5%	2.5%	0.0%	100.0%
Lower Division	14,230	9,974	5,970	2,234	2,277	944	770	411	36,810
Percent	38.7%	27.1%	16.2%	6.1%	6.2%	2.6%	2.1%	1.1%	100.0%
Upper Division	10,619	5,469	2,668	683	579	255	343	1,346	21,962
Percent	48.4%	24.9%	12.1%	3.1%	2.6%	1.2%	1.6%	6.1%	100.0%
Graduate	7,067	1,290	182	34	116	62	131	1,367	10,249
Percent	69.0%	12.6%	1.8%	0.3%	1.1%	0.6%	1.3%	13.3%	100.0%
Total	32,006	16,856	8,913	2,957	3,053	1,289	1,255	3,124	69,453
Percent	46.1%	24.3%	12.8%	4.3%	4.4%	1.9%	1.8%	4.5%	100.0%
<b>2018-2019</b>									
Remedial	204	88	75	0	40	13	2	0	422
Percent	48.3%	20.9%	17.8%	0.0%	9.5%	3.1%	0.5%	0.0%	100.0%
Lower Division	14,440	9,337	5,818	2,289	2,375	944	891	555	36,649
Percent	39.4%	25.5%	15.9%	6.2%	6.5%	2.6%	2.4%	1.5%	100.0%
Upper Division	10,670	5,852	2,854	708	649	236	318	1,439	22,726
Percent	47.0%	25.8%	12.6%	3.1%	2.9%	1.0%	1.4%	6.3%	100.0%
Graduate	5,759	1,198	223	41	93	55	131	1,026	8,526
Percent	67.5%	14.1%	2.6%	0.5%	1.1%	0.6%	1.5%	12.0%	100.0%
Total	31,073	16,475	8,970	3,038	3,157	1,248	1,342	3,020	68,323
Percent	45.5%	24.1%	13.1%	4.4%	4.6%	1.8%	2.0%	4.4%	100.0%
<b>2019-2020</b>									
Remedial	216	72	56	10	44	14	13	0	425
Percent	50.8%	16.9%	13.2%	2.4%	10.4%	3.3%	3.1%	0.0%	100.0%
Lower Division	14,895	8,673	4,810	1,599	1,596	393	1,948	492	34,406
Percent	43.3%	25.2%	14.0%	4.6%	4.6%	1.1%	5.7%	1.4%	100.0%
Upper Division	10,972	5,591	2,584	586	500	126	763	1,297	22,419
Percent	48.9%	24.9%	11.5%	2.6%	2.2%	0.6%	3.4%	5.8%	100.0%
Graduate	5,376	1,179	197	28	57	31	182	993	8,043
Percent	66.8%	14.7%	2.4%	0.3%	0.7%	0.4%	2.3%	12.3%	100.0%
Total	31,459	15,515	7,647	2,223	2,197	564	2,906	2,782	65,293
Percent	48.2%	23.8%	11.7%	3.4%	3.4%	0.9%	4.5%	4.3%	100.0%
<b>2020-2021</b>									
Remedial	201	96	59	8	114	21	115	0	614
Percent	32.7%	15.6%	9.6%	1.3%	18.6%	3.4%	18.7%	0.0%	100.0%
Lower Division	14,811	8,134	4,457	1,679	2,722	1,020	2,640	633	36,096
Percent	41.0%	22.5%	12.3%	4.7%	7.5%	2.8%	7.3%	1.8%	100.0%
Upper Division	10,687	5,182	2,449	729	798	279	832	1,264	22,220
Percent	48.1%	23.3%	11.0%	3.3%	3.6%	1.3%	3.7%	5.7%	100.0%
Graduate	5,842	1,519	189	31	109	46	248	989	8,973
Percent	65.1%	16.9%	2.1%	0.3%	1.2%	0.5%	2.8%	11.0%	100.0%
Total	31,541	14,931	7,154	2,447	3,743	1,366	3,835	2,886	67,903
Percent	46.5%	22.0%	10.5%	3.6%	5.5%	2.0%	5.6%	4.3%	100.0%