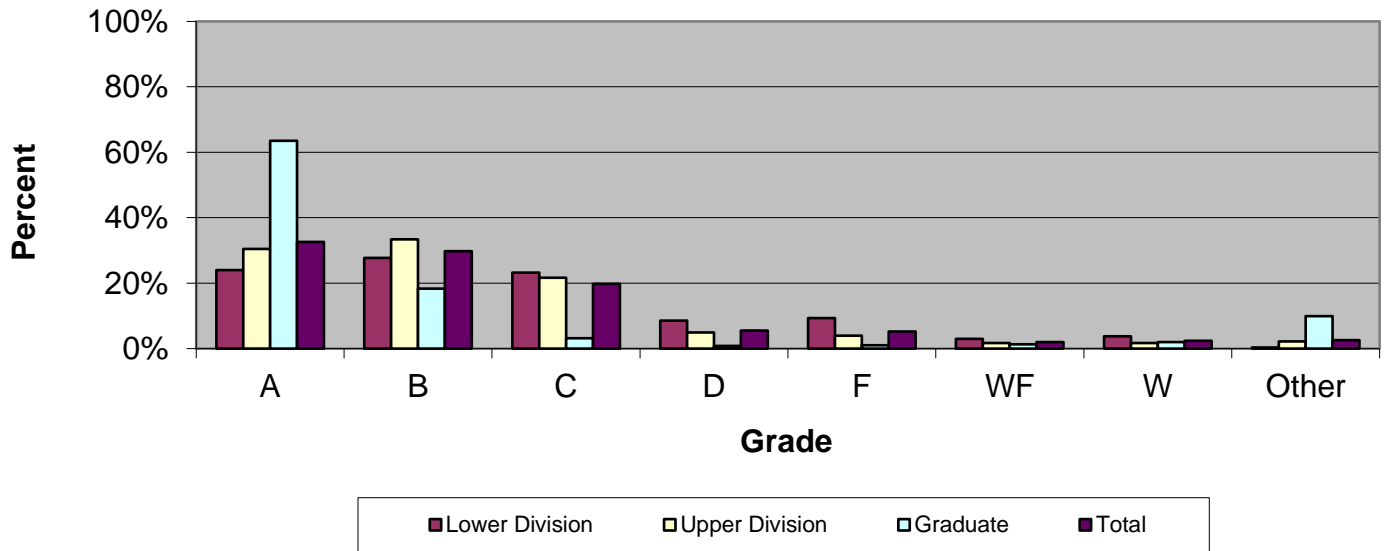


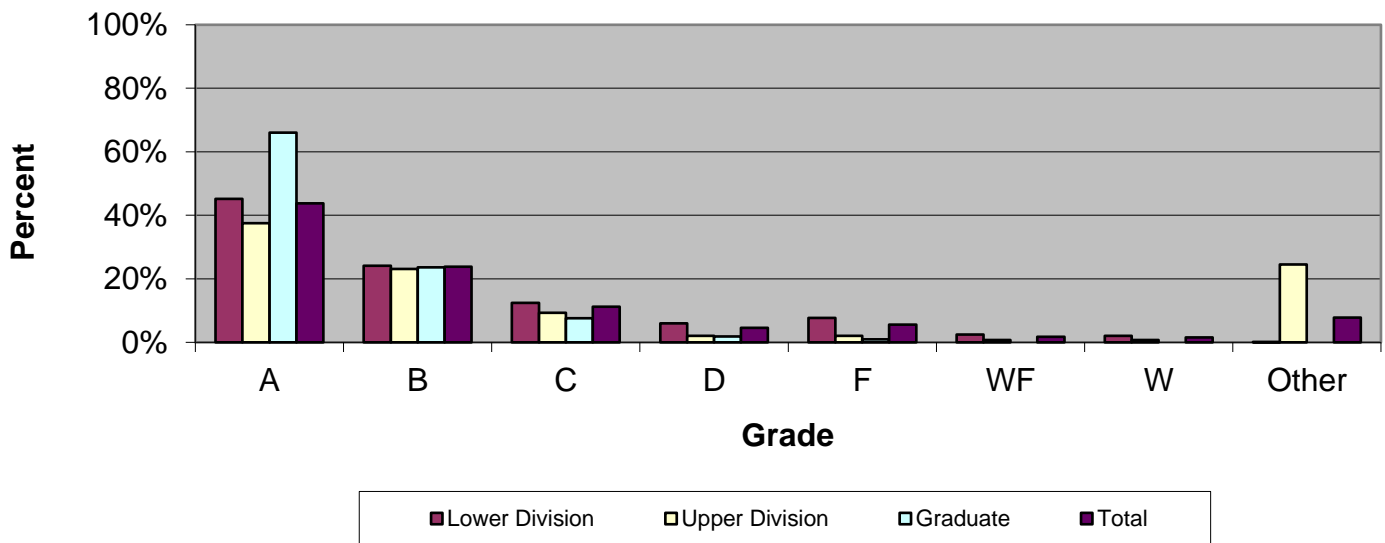
CSU Facts & Figures 2020: Grade Distribution

Grade Distribution of Full-Time Faculty for 2019-20 D. Abbott Turner College of Business



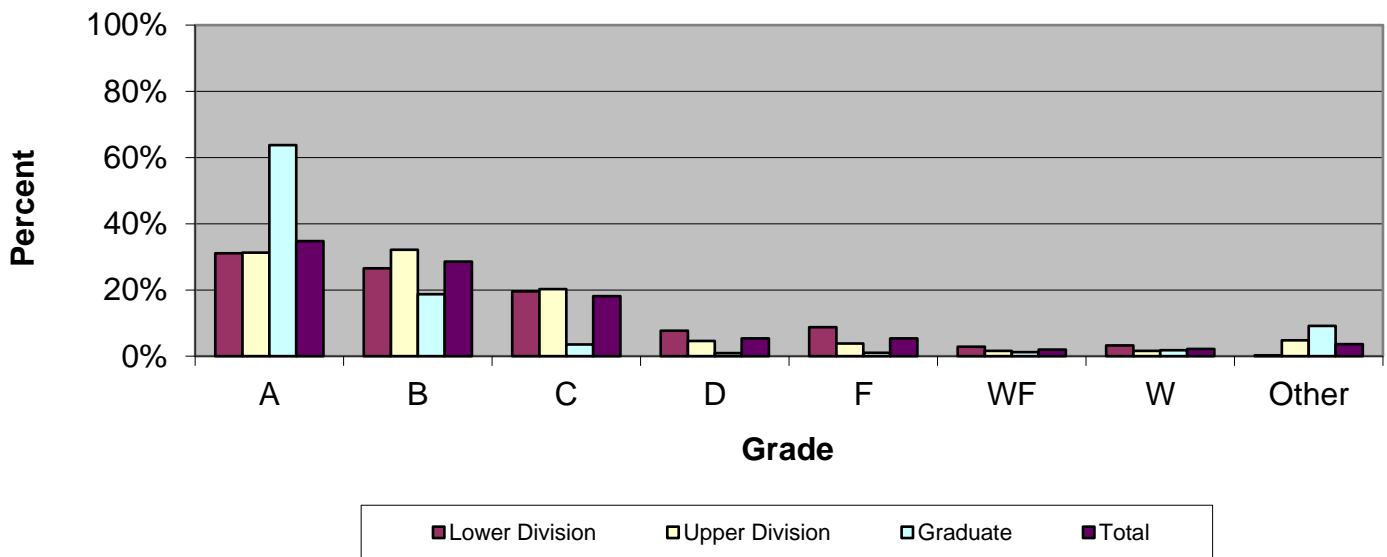
Grade Distribution by Level of Instruction - D. Abbott Turner College of Business									
Full-Time Faculty	A's	B's	C's	D's	F's	WF's	W's	Other	Total
<i>2016-2017</i>									
Lower Division	589	712	586	246	240	106	92	4	2,575
Percent	22.9%	27.7%	22.8%	9.6%	9.3%	4.1%	3.6%	0.2%	100.0%
Upper Division	1,510	1,738	1,066	249	192	100	85	95	5,035
Percent	30.0%	34.5%	21.2%	4.9%	3.8%	2.0%	1.7%	1.9%	100.0%
Graduate	839	288	48	6	9	8	16	89	1,303
Percent	64.4%	22.1%	3.7%	0.5%	0.7%	0.6%	1.2%	6.8%	100.0%
Total	2,938	2,738	1,700	501	441	214	193	188	8,913
Percent	33.0%	30.7%	19.1%	5.6%	4.9%	2.4%	2.2%	2.1%	100.0%
<i>2017-2018</i>									
Lower Division	725	755	608	249	236	100	78	9	2,760
Percent	26.3%	27.4%	22.0%	9.0%	8.6%	3.6%	2.8%	0.3%	100.0%
Upper Division	1,704	1,767	1,145	256	176	86	104	117	5,355
Percent	31.8%	33.0%	21.4%	4.8%	3.3%	1.6%	1.9%	2.2%	100.0%
Graduate	755	267	41	10	11	21	13	101	1,219
Percent	61.9%	21.9%	3.4%	0.8%	0.9%	1.7%	1.1%	8.3%	100.0%
Total	3,184	2,789	1,794	515	423	207	195	227	9,334
Percent	34.1%	29.9%	19.2%	5.5%	4.5%	2.2%	2.1%	2.4%	100.0%
<i>2018-2019</i>									
Lower Division	703	811	679	250	274	88	111	10	2,926
Percent	24.0%	27.7%	23.2%	8.5%	9.4%	3.0%	3.8%	0.3%	100.0%
Upper Division	1,674	1,835	1,193	273	220	92	95	119	5,501
Percent	30.4%	33.4%	21.7%	5.0%	4.0%	1.7%	1.7%	2.2%	100.0%
Graduate	770	222	38	10	12	16	24	120	1,212
Percent	63.5%	18.3%	3.1%	0.8%	1.0%	1.3%	2.0%	9.9%	100.0%
Total	3,147	2,868	1,910	533	506	196	230	249	9,639
Percent	32.6%	29.8%	19.8%	5.5%	5.2%	2.0%	2.4%	2.6%	100.0%
<i>2019-2020</i>									
Lower Division	730	807	547	136	148	39	268	1	2,676
Percent	27.3%	30.2%	20.4%	5.1%	5.5%	1.5%	10.0%	0.0%	100.0%
Upper Division	1,911	1,778	1,109	231	186	57	277	172	5,721
Percent	33.4%	31.1%	19.4%	4.0%	3.3%	1.0%	4.8%	3.0%	100.0%
Graduate	625	138	28	5	6	9	37	88	936
Percent	66.8%	14.7%	3.0%	0.5%	0.6%	1.0%	4.0%	9.4%	100.0%
Total	3,266	2,723	1,684	372	340	105	582	261	9,333
Percent	35.0%	29.2%	18.0%	4.0%	3.6%	1.1%	6.2%	2.8%	100.0%

Grade Distribution of Part-Time Faculty for 2019-20
D. Abbott Turner College of Business



Grade Distribution by Level of Instruction - D. Abbott Turner College of Business									
Part-Time Faculty	A's	B's	C's	D's	F's	WF's	W's	Other	Total
<i>2016-2017</i>									
Lower Division	875	511	246	85	104	61	52	4	1,938
Percent	45.1%	26.4%	12.7%	4.4%	5.4%	3.1%	2.7%	0.2%	100.0%
Upper Division	212	175	68	17	30	6	8	185	701
Percent	30.2%	25.0%	9.7%	2.4%	4.3%	0.9%	1.1%	26.4%	100.0%
Graduate	42	42	2	0	0	1	2	6	95
Percent	44.2%	44.2%	2.1%	0.0%	0.0%	1.1%	2.1%	6.3%	100.0%
Total	1,129	728	316	102	134	68	62	195	2,734
Percent	41.3%	26.6%	11.6%	3.7%	4.9%	2.5%	2.3%	7.1%	100.0%
<i>2017-2018</i>									
Lower Division	792	425	210	67	104	41	26	6	1,671
Percent	47.4%	25.4%	12.6%	4.0%	6.2%	2.5%	1.6%	0.4%	100.0%
Upper Division	258	128	74	10	13	9	7	189	688
Percent	37.5%	18.6%	10.8%	1.5%	1.9%	1.3%	1.0%	27.5%	100.0%
Graduate	65	19	7	2	1	0	0	11	105
Percent	61.9%	18.1%	6.7%	1.9%	1.0%	0.0%	0.0%	10.5%	100.0%
Total	1,115	572	291	79	118	50	33	206	2,464
Percent	45.3%	23.2%	11.8%	3.2%	4.8%	2.0%	1.3%	8.4%	100.0%
<i>2018-2019</i>									
Lower Division	667	356	184	88	113	36	30	2	1,476
Percent	45.2%	24.1%	12.5%	6.0%	7.7%	2.4%	2.0%	0.1%	100.0%
Upper Division	271	167	67	15	15	5	5	177	722
Percent	37.5%	23.1%	9.3%	2.1%	2.1%	0.7%	0.7%	24.5%	100.0%
Graduate	70	25	8	2	1	0	0	0	106
Percent	66.0%	23.6%	7.5%	1.9%	0.9%	0.0%	0.0%	0.0%	100.0%
Total	1,008	548	259	105	129	41	35	179	2,304
Percent	43.8%	23.8%	11.2%	4.6%	5.6%	1.8%	1.5%	7.8%	100.0%
<i>2019-2020</i>									
Lower Division	666	307	174	48	67	11	78	2	1,353
Percent	49.2%	22.7%	12.9%	3.5%	5.0%	0.8%	5.8%	0.1%	100.0%
Upper Division	250	186	54	6	7	1	30	135	669
Percent	37.4%	27.8%	8.1%	0.9%	1.0%	0.1%	4.5%	20.2%	100.0%
Graduate	115	43	12	2	4	0	7	22	205
Percent	56.1%	21.0%	5.9%	1.0%	2.0%	0.0%	3.4%	10.7%	100.0%
Total	1,031	536	240	56	78	12	115	159	2,227
Percent	46.3%	24.1%	10.8%	2.5%	3.5%	0.5%	5.2%	7.1%	100.0%

Grade Distribution of All Faculty for 2019-20
D. Abbott Turner College of Business



Grade Distribution by Level of Instruction - D. Abbott Turner College of Business									
All Faculty	A's	B's	C's	D's	F's	WF's	W's	Other	Total
<i>2016-2017</i>									
Lower Division	1,464	1,223	832	331	344	167	144	8	4,513
Percent	32.4%	27.1%	18.4%	7.3%	7.6%	3.7%	3.2%	0.2%	100.0%
Upper Division	1,722	1,913	1,134	266	222	106	93	280	5,736
Percent	30.0%	33.4%	19.8%	4.6%	3.9%	1.8%	1.6%	4.9%	100.0%
Graduate	881	330	50	6	9	9	18	95	1,398
Percent	63.0%	23.6%	3.6%	0.4%	0.6%	0.6%	1.3%	6.8%	100.0%
Total	4,067	3,466	2,016	603	575	282	255	383	11,647
Percent	34.9%	29.8%	17.3%	5.2%	4.9%	2.4%	2.2%	3.3%	100.0%
<i>2017-2018</i>									
Lower Division	1,517	1,180	818	316	340	141	104	15	4,431
Percent	34.2%	26.6%	18.5%	7.1%	7.7%	3.2%	2.3%	0.3%	100.0%
Upper Division	1,962	1,895	1,219	266	189	95	111	306	6,043
Percent	32.5%	31.4%	20.2%	4.4%	3.1%	1.6%	1.8%	5.1%	100.0%
Graduate	820	286	48	12	12	21	13	112	1,324
Percent	61.9%	21.6%	3.6%	0.9%	0.9%	1.6%	1.0%	8.5%	100.0%
Total	4,299	3,361	2,085	594	541	257	228	433	11,798
Percent	36.4%	28.5%	17.7%	5.0%	4.6%	2.2%	1.9%	3.7%	100.0%
<i>2018-2019</i>									
Lower Division	1,370	1,167	863	338	387	124	141	12	4,402
Percent	31.1%	26.5%	19.6%	7.7%	8.8%	2.8%	3.2%	0.3%	100.0%
Upper Division	1,945	2,002	1,260	288	235	97	100	296	6,223
Percent	31.3%	32.2%	20.2%	4.6%	3.8%	1.6%	1.6%	4.8%	100.0%
Graduate	840	247	46	12	13	16	24	120	1,318
Percent	63.7%	18.7%	3.5%	0.9%	1.0%	1.2%	1.8%	9.1%	100.0%
Total	4,155	3,416	2,169	638	635	237	265	428	11,943
Percent	34.8%	28.6%	18.2%	5.3%	5.3%	2.0%	2.2%	3.6%	100.0%
<i>2019-2020</i>									
Lower Division	1,396	1,114	721	184	215	50	346	3	4,029
Percent	34.6%	27.6%	17.9%	4.6%	5.3%	1.2%	8.6%	0.1%	100.0%
Upper Division	2,161	1,964	1,163	237	193	58	307	307	6,390
Percent	33.8%	30.7%	18.2%	3.7%	3.0%	0.9%	4.8%	4.8%	100.0%
Graduate	740	181	40	7	10	9	44	110	1,141
Percent	64.9%	15.9%	3.5%	0.6%	0.9%	0.8%	3.9%	9.6%	100.0%
Total	4,297	3,259	1,924	428	418	117	697	420	11,560
Percent	37.2%	28.2%	16.6%	3.7%	3.6%	1.0%	6.0%	3.6%	100.0%