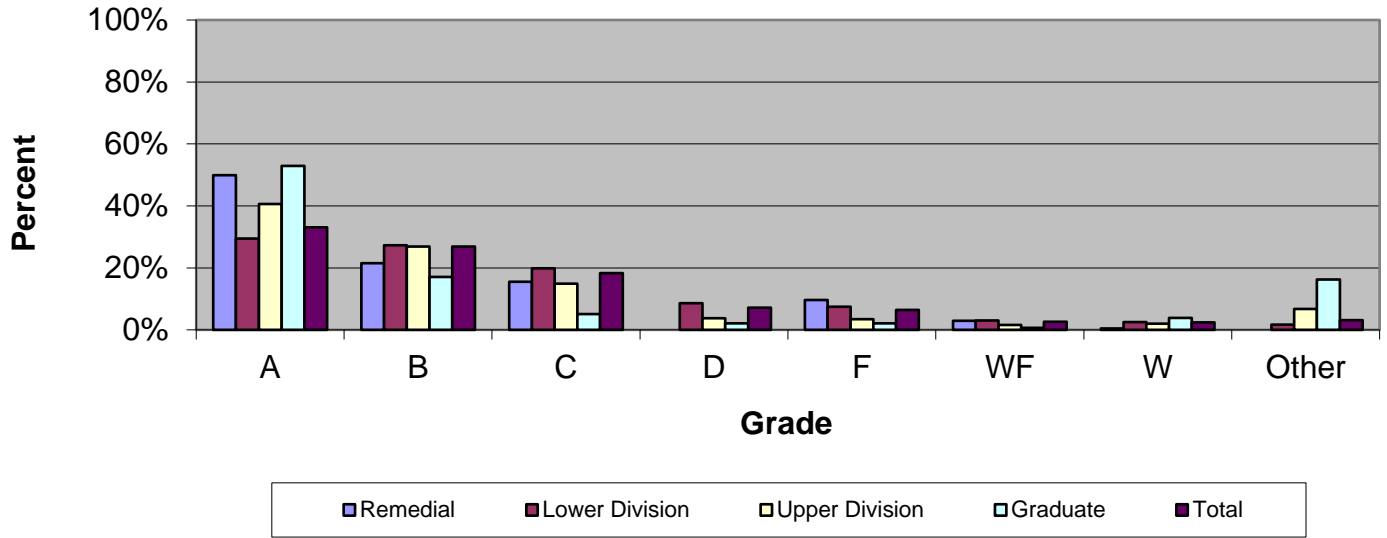


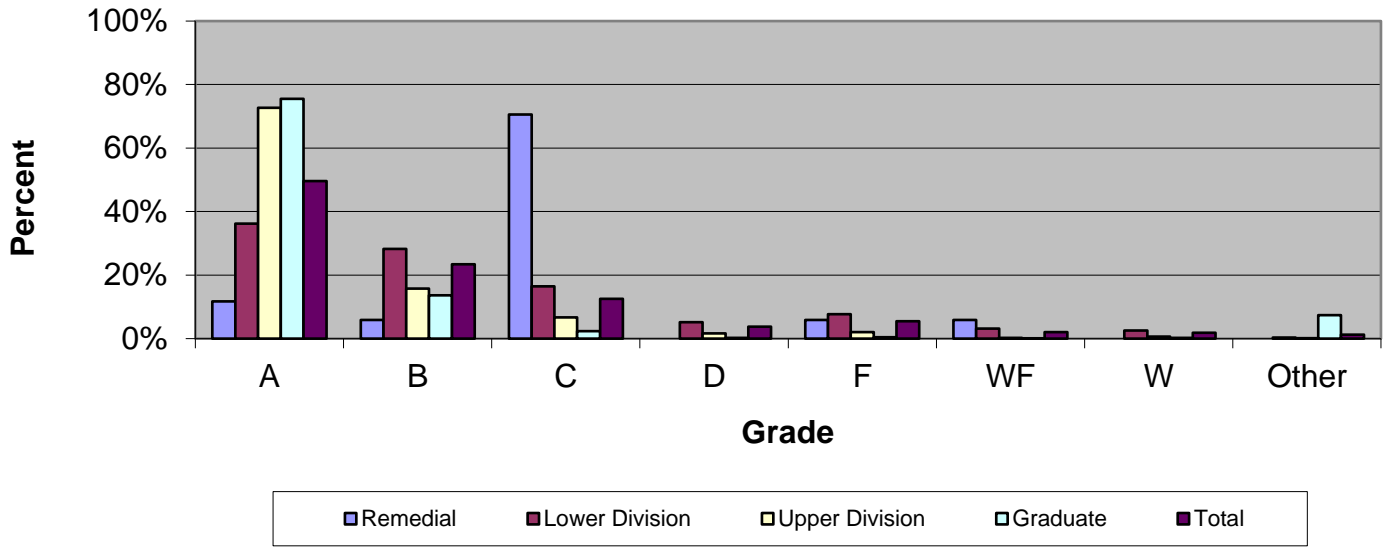
CSU Facts & Figures 2020: Grade Distribution

Grade Distribution of Full-Time Faculty for 2019-20 College of Letters & Sciences



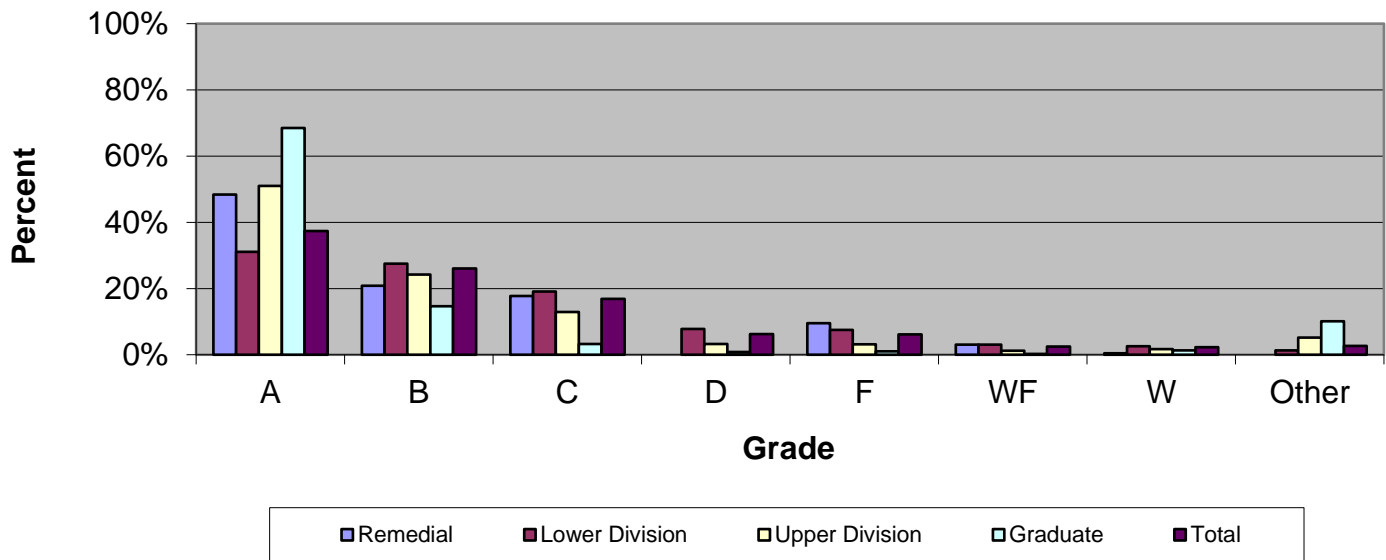
Grade Distribution by Level of Instruction - College of Letters & Sciences									
Full-Time Faculty	A's	B's	C's	D's	F's	WF's	W's	Other	Total
<i>2016-2017</i>									
Remedial	79	118	117	15	89	34	14	1	467
Percent	16.9%	25.3%	25.1%	3.2%	19.1%	7.3%	3.0%	0.2%	100.0%
Lower Division	4,292	4,715	3,236	1,331	1,100	441	404	135	15,654
Percent	27.4%	30.1%	20.7%	8.5%	7.0%	2.8%	2.6%	0.9%	100.0%
Upper Division	2,060	1,479	790	219	171	93	107	212	5,131
Percent	40.1%	28.8%	15.4%	4.3%	3.3%	1.8%	2.1%	4.1%	100.0%
Graduate	659	186	35	9	14	13	10	137	1,063
Percent	62.0%	17.5%	3.3%	0.8%	1.3%	1.2%	0.9%	12.9%	100.0%
<i>Total</i>	7,090	6,498	4,178	1,574	1,374	581	535	485	22,315
Percent	31.8%	29.1%	18.7%	7.1%	6.2%	2.6%	2.4%	2.2%	100.0%
<i>2017-2018</i>									
Remedial	73	95	70	2	68	14	6	0	328
Percent	22.3%	29.0%	21.3%	0.6%	20.7%	4.3%	1.8%	0.0%	100.0%
Lower Division	4,432	4,534	3,267	1,310	1,120	448	363	200	15,674
Percent	28.3%	28.9%	20.8%	8.4%	7.1%	2.9%	2.3%	1.3%	100.0%
Upper Division	2,171	1,336	682	207	201	84	88	278	5,047
Percent	43.0%	26.5%	13.5%	4.1%	4.0%	1.7%	1.7%	5.5%	100.0%
Graduate	430	113	14	6	8	4	7	46	628
Percent	68.5%	18.0%	2.2%	1.0%	1.3%	0.6%	1.1%	7.3%	100.0%
<i>Total</i>	7,106	6,078	4,033	1,525	1,397	550	464	524	21,677
Percent	32.8%	28.0%	18.6%	7.0%	6.4%	2.5%	2.1%	2.4%	100.0%
<i>2018-2019</i>									
Remedial	202	87	63	0	39	12	2	0	405
Percent	49.9%	21.5%	15.6%	0.0%	9.6%	3.0%	0.5%	0.0%	100.0%
Lower Division	4,857	4,497	3,277	1,421	1,226	500	418	269	16,465
Percent	29.5%	27.3%	19.9%	8.6%	7.4%	3.0%	2.5%	1.6%	100.0%
Upper Division	2,295	1,519	839	211	196	88	112	383	5,643
Percent	40.7%	26.9%	14.9%	3.7%	3.5%	1.6%	2.0%	6.8%	100.0%
Graduate	248	80	24	10	10	3	18	76	469
Percent	52.9%	17.1%	5.1%	2.1%	2.1%	0.6%	3.8%	16.2%	100.0%
<i>Total</i>	7,602	6,183	4,203	1,642	1,471	603	550	728	22,982
Percent	33.1%	26.9%	18.3%	7.1%	6.4%	2.6%	2.4%	3.2%	100.0%
<i>2019-2020</i>									
Remedial	214	72	56	10	44	14	13	0	423
Percent	50.6%	17.0%	13.2%	2.4%	10.4%	3.3%	3.1%	0.0%	100.0%
Lower Division	5,720	4,392	2,773	1,015	864	220	982	260	16,226
Percent	35.3%	27.1%	17.1%	6.3%	5.3%	1.4%	6.1%	1.6%	100.0%
Upper Division	2,422	1,415	728	195	162	41	238	309	5,510
Percent	44.0%	25.7%	13.2%	3.5%	2.9%	0.7%	4.3%	5.6%	100.0%
Graduate	286	101	31	10	1	4	21	59	513
Percent	55.8%	19.7%	6.0%	1.9%	0.2%	0.8%	4.1%	11.5%	100.0%
<i>Total</i>	8,642	5,980	3,588	1,230	1,071	279	1,254	628	22,672
Percent	38.1%	26.4%	15.8%	5.4%	4.7%	1.2%	5.5%	2.8%	100.0%

Grade Distribution of Part-Time Faculty for 2019-20
College of Letters & Sciences



Grade Distribution by Level of Instruction - College of Letters & Sciences									
Part-Time Faculty	A's	B's	C's	D's	F's	WF's	W's	Other	Total
<i>2016-2017</i>									
Remedial	20	47	48	4	18	6	2	0	145
Percent	13.8%	32.4%	33.1%	2.8%	12.4%	4.1%	1.4%	0.0%	100.0%
Lower Division	2,455	1,873	1,085	375	395	204	139	12	6,538
Percent	37.5%	28.6%	16.6%	5.7%	6.0%	3.1%	2.1%	0.2%	100.0%
Upper Division	1,417	425	139	28	15	15	15	5	2,059
Percent	68.8%	20.6%	6.8%	1.4%	0.7%	0.7%	0.7%	0.2%	100.0%
Graduate	543	125	38	6	10	8	11	1	742
Percent	73.2%	16.8%	5.1%	0.8%	1.3%	1.1%	1.5%	0.1%	100.0%
Total	4,435	2,470	1,310	413	438	233	167	18	9,484
Percent	46.8%	26.0%	13.8%	4.4%	4.6%	2.5%	1.8%	0.2%	100.0%
<i>2017-2018</i>									
Remedial	17	28	23	4	13	14	5	0	104
Percent	16.3%	26.9%	22.1%	3.8%	12.5%	13.5%	4.8%	0.0%	100.0%
Lower Division	2,020	1,804	1,002	349	440	184	134	9	5,942
Percent	34.0%	30.4%	16.9%	5.9%	7.4%	3.1%	2.3%	0.2%	100.0%
Upper Division	1,382	361	119	18	37	11	14	3	1,945
Percent	71.1%	18.6%	6.1%	0.9%	1.9%	0.6%	0.7%	0.2%	100.0%
Graduate	813	122	19	0	1	1	4	83	1,043
Percent	77.9%	11.7%	1.8%	0.0%	0.1%	0.1%	0.4%	8.0%	100.0%
Total	4,232	2,315	1,163	371	491	210	157	95	9,034
Percent	46.8%	25.6%	12.9%	4.1%	5.4%	2.3%	1.7%	1.1%	100.0%
<i>2018-2019</i>									
Remedial	2	1	12	0	1	1	0	0	17
Percent	11.8%	5.9%	70.6%	0.0%	5.9%	5.9%	0.0%	0.0%	100.0%
Lower Division	1,828	1,424	832	261	389	159	130	18	5,041
Percent	36.3%	28.2%	16.5%	5.2%	7.7%	3.2%	2.6%	0.4%	100.0%
Upper Division	1,298	281	120	30	37	4	12	3	1,785
Percent	72.7%	15.7%	6.7%	1.7%	2.1%	0.2%	0.7%	0.2%	100.0%
Graduate	788	142	25	3	5	1	2	77	1,043
Percent	75.6%	13.6%	2.4%	0.3%	0.5%	0.1%	0.2%	7.4%	100.0%
Total	3,916	1,848	989	294	432	165	144	98	7,886
Percent	49.7%	23.4%	12.5%	3.7%	5.5%	2.1%	1.8%	1.2%	100.0%
<i>2019-2020</i>									
Remedial	2	0	0	0	0	0	0	0	2
Percent	100.0%	0.0%	0.0%	0.0%	0.0%	0.0%	0.0%	0.0%	100.0%
Lower Division	1,601	1,117	548	157	196	55	233	4	3,911
Percent	40.9%	28.6%	14.0%	4.0%	5.0%	1.4%	6.0%	0.1%	100.0%
Upper Division	1,237	272	90	21	17	7	21	0	1,665
Percent	74.3%	16.3%	5.4%	1.3%	1.0%	0.4%	1.3%	0.0%	100.0%
Graduate	683	67	14	0	1	0	0	63	828
Percent	82.5%	8.1%	1.7%	0.0%	0.1%	0.0%	0.0%	7.6%	100.0%
Total	3,523	1,456	652	178	214	62	254	67	6,406
Percent	55.0%	22.7%	10.2%	2.8%	3.3%	1.0%	4.0%	1.0%	100.0%

College of Letters & Sciences



Grade Distribution by Level of Instruction - College of Letters & Sciences									
All Faculty	A's	B's	C's	D's	F's	WF's	W's	Other	Total
<i>2016-2017</i>									
Remedial	99	165	165	19	107	40	16	1	612
Percent									
Lower Division	6,747	6,588	4,321	1,706	1,495	645	543	147	22,192
Percent	30.4%	29.7%	19.5%	7.7%	6.7%	2.9%	2.4%	0.7%	100.0%
Upper Division	3,477	1,904	929	247	186	108	122	217	7,190
Percent	48.4%	26.5%	12.9%	3.4%	2.6%	1.5%	1.7%	3.0%	100.0%
Graduate	1,202	311	73	15	24	21	21	138	1,805
Percent	66.6%	17.2%	4.0%	0.8%	1.3%	1.2%	1.2%	7.6%	100.0%
Total	11,525	8,968	5,488	1,987	1,812	814	702	503	31,799
Percent	36.2%	28.2%	17.3%	6.2%	5.7%	2.6%	2.2%	1.6%	100.0%
<i>2017-2018</i>									
Remedial	90	123	93	6	81	28	11	0	432
Percent	20.8%	28.5%	21.5%	1.4%	18.8%	6.5%	2.5%	0.0%	100.0%
Lower Division	6,452	6,338	4,269	1,659	1,560	632	497	209	21,616
Percent	29.8%	29.3%	19.7%	7.7%	7.2%	2.9%	2.3%	1.0%	100.0%
Upper Division	3,553	1,697	801	225	238	95	102	281	6,992
Percent	50.8%	24.3%	11.5%	3.2%	3.4%	1.4%	1.5%	4.0%	100.0%
Graduate	1,243	235	33	6	9	5	11	129	1,671
Percent	74.4%	14.1%	2.0%	0.4%	0.5%	0.3%	0.7%	7.7%	100.0%
Total	11,338	8,393	5,196	1,896	1,888	760	621	619	30,711
Percent	36.9%	27.3%	16.9%	6.2%	6.1%	2.5%	2.0%	2.0%	100.0%
<i>2018-2019</i>									
Remedial	204	88	75	0	40	13	2	0	422
Percent	48.3%	20.9%	17.8%	0.0%	9.5%	3.1%	0.5%	0.0%	100.0%
Lower Division	6,685	5,921	4,109	1,682	1,615	659	548	287	21,506
Percent	31.1%	27.5%	19.1%	7.8%	7.5%	3.1%	2.5%	1.3%	100.0%
Upper Division	3,593	1,800	959	241	233	92	124	386	7,428
Percent	51.0%	24.2%	12.9%	3.2%	3.1%	1.2%	1.7%	5.2%	102.7%
Graduate	1,036	222	49	13	15	4	20	153	1,512
Percent	68.5%	14.7%	3.2%	0.9%	1.0%	0.3%	1.3%	10.1%	100.0%
Total	11,518	8,031	5,192	1,936	1,903	768	694	826	30,868
Percent	37.3%	26.0%	16.8%	6.3%	6.2%	2.5%	2.2%	2.7%	100.0%
<i>2019-2020</i>									
Remedial	216	72	56	10	44	14	13	0	425
Percent	50.8%	16.9%	13.2%	2.4%	10.4%	3.3%	3.1%	0.0%	100.0%
Lower Division	7,321	5,509	3,321	1,172	1,060	275	1,215	264	20,137
Percent	36.4%	27.4%	16.5%	5.8%	5.3%	1.4%	6.0%	1.3%	100.0%
Upper Division	3,659	1,687	818	216	179	48	259	309	7,175
Percent	53.3%	23.5%	11.4%	3.0%	2.5%	0.7%	3.6%	4.3%	102.3%
Graduate	969	168	45	10	2	4	21	122	1,341
Percent	72.3%	12.5%	3.4%	0.7%	0.1%	0.3%	1.6%	9.1%	100.0%
Total	12,165	7,436	4,240	1,408	1,285	341	1,508	695	29,078
Percent	41.8%	25.6%	14.6%	4.8%	4.4%	1.2%	5.2%	2.4%	100.0%

