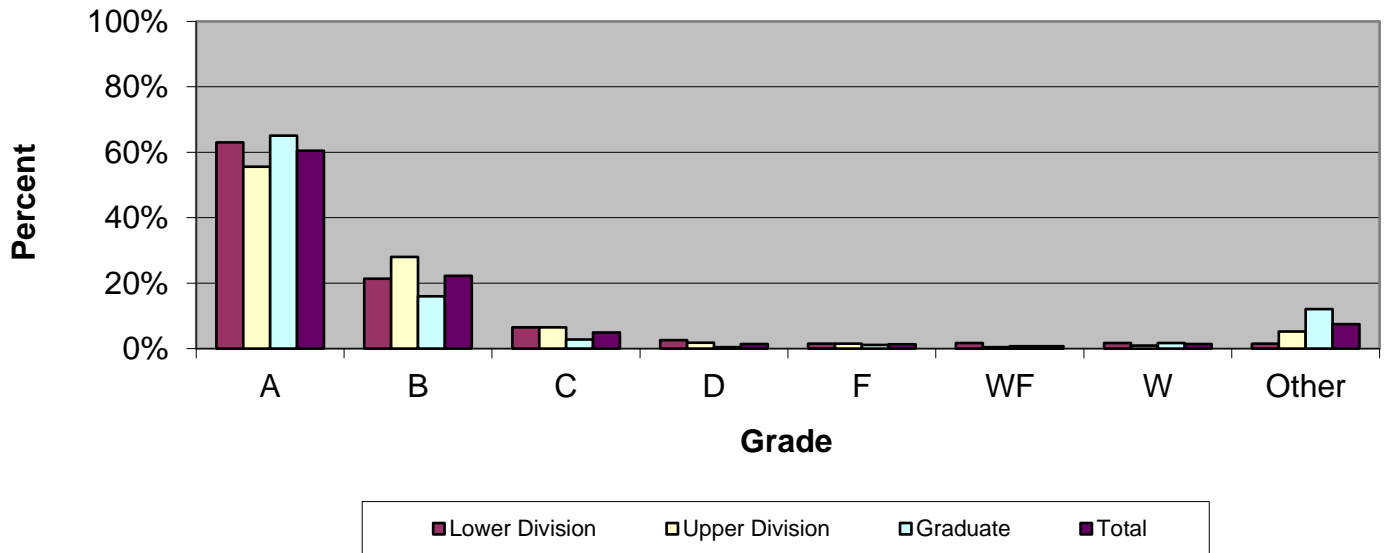


# CSU Facts & Figures 2020: Grade Distribution

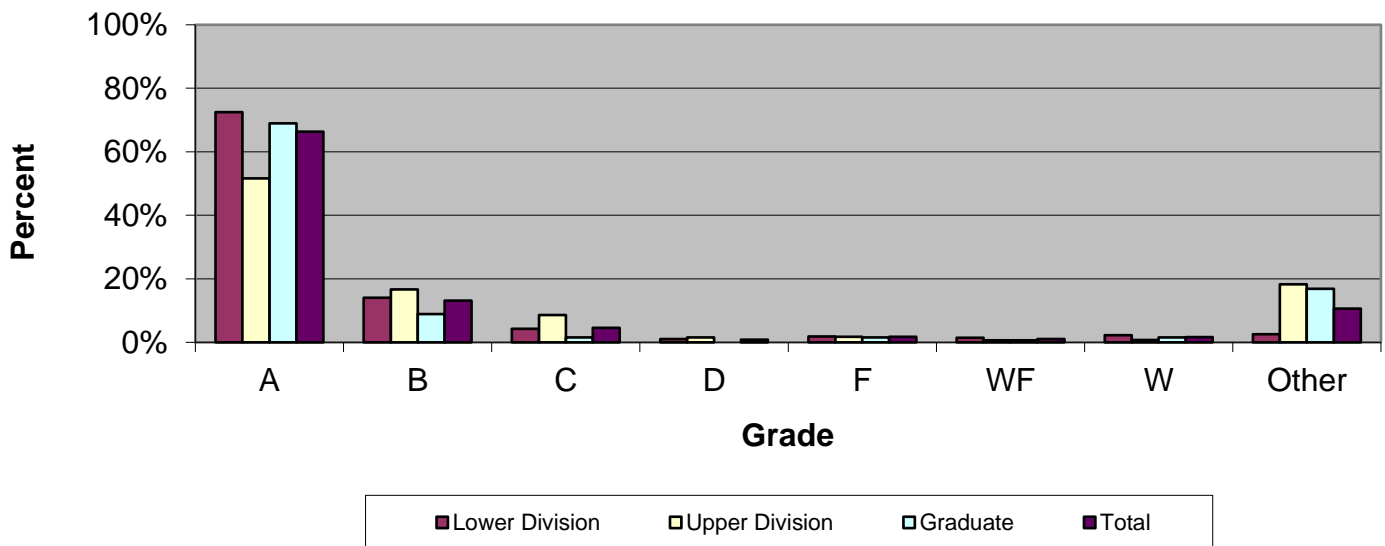
## Grade Distribution of Full-Time Faculty for 2019-20 College of Education & Health Professions



### Grade Distribution by Level of Instruction - College of Education & Health Professions

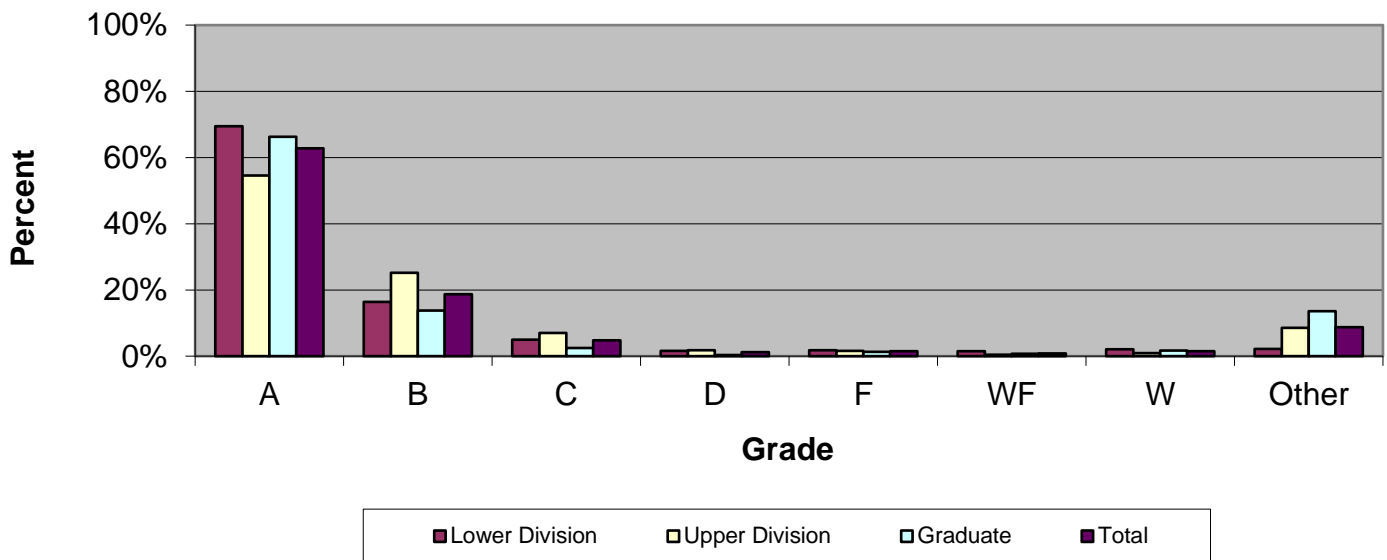
| Full-Time Faculty | A's          | B's          | C's        | D's        | F's        | WF's      | W's        | Other      | Total        |
|-------------------|--------------|--------------|------------|------------|------------|-----------|------------|------------|--------------|
| <i>2016-2017</i>  |              |              |            |            |            |           |            |            |              |
| Lower Division    | 744          | 310          | 110        | 31         | 25         | 15        | 23         | 21         | 1,279        |
| Percent           | 58.2%        | 24.2%        | 8.6%       | 2.4%       | 2.0%       | 1.2%      | 1.8%       | 1.6%       | 100.0%       |
| Upper Division    | 2,276        | 1,080        | 340        | 125        | 67         | 24        | 44         | 239        | 4,195        |
| Percent           | 54.3%        | 25.7%        | 8.1%       | 3.0%       | 1.6%       | 0.6%      | 1.0%       | 5.7%       | 100.0%       |
| Graduate          | 2,645        | 398          | 73         | 17         | 41         | 37        | 62         | 466        | 3,739        |
| Percent           | 70.7%        | 10.6%        | 2.0%       | 0.5%       | 1.1%       | 1.0%      | 1.7%       | 12.5%      | 100.0%       |
| <b>Total</b>      | <b>5,665</b> | <b>1,788</b> | <b>523</b> | <b>173</b> | <b>133</b> | <b>76</b> | <b>129</b> | <b>726</b> | <b>9,213</b> |
| Percent           | 61.5%        | 19.4%        | 5.7%       | 1.9%       | 1.4%       | 0.8%      | 1.4%       | 7.9%       | 100.0%       |
| <i>2017-2018</i>  |              |              |            |            |            |           |            |            |              |
| Lower Division    | 704          | 245          | 75         | 28         | 27         | 15        | 23         | 24         | 1,141        |
| Percent           | 61.7%        | 21.5%        | 6.6%       | 2.5%       | 2.4%       | 1.3%      | 2.0%       | 2.1%       | 100.0%       |
| Upper Division    | 2,399        | 963          | 311        | 89         | 50         | 22        | 64         | 179        | 4,077        |
| Percent           | 58.8%        | 23.6%        | 7.6%       | 2.2%       | 1.2%       | 0.5%      | 1.6%       | 4.4%       | 100.0%       |
| Graduate          | 3,144        | 538          | 75         | 11         | 72         | 19        | 68         | 445        | 4,372        |
| Percent           | 71.9%        | 12.3%        | 1.7%       | 0.3%       | 1.6%       | 0.4%      | 1.6%       | 10.2%      | 100.0%       |
| <b>Total</b>      | <b>6,247</b> | <b>1,746</b> | <b>461</b> | <b>128</b> | <b>149</b> | <b>56</b> | <b>155</b> | <b>648</b> | <b>9,590</b> |
| Percent           | 65.1%        | 18.2%        | 4.8%       | 1.3%       | 1.6%       | 0.6%      | 1.6%       | 6.8%       | 100.0%       |
| <i>2018-2019</i>  |              |              |            |            |            |           |            |            |              |
| Lower Division    | 742          | 252          | 77         | 31         | 18         | 20        | 20         | 18         | 1,178        |
| Percent           | 63.0%        | 21.4%        | 6.5%       | 2.6%       | 1.5%       | 1.7%      | 1.7%       | 1.5%       | 100.0%       |
| Upper Division    | 2,173        | 1,096        | 253        | 72         | 59         | 16        | 38         | 204        | 3,911        |
| Percent           | 55.6%        | 28.0%        | 6.5%       | 1.8%       | 1.5%       | 0.4%      | 1.0%       | 5.2%       | 100.0%       |
| Graduate          | 2,293        | 565          | 99         | 16         | 40         | 25        | 61         | 426        | 3,525        |
| Percent           | 65.0%        | 16.0%        | 2.8%       | 0.5%       | 1.1%       | 0.7%      | 1.7%       | 12.1%      | 100.0%       |
| <b>Total</b>      | <b>5,208</b> | <b>1,913</b> | <b>429</b> | <b>119</b> | <b>117</b> | <b>61</b> | <b>119</b> | <b>648</b> | <b>8,614</b> |
| Percent           | 60.5%        | 22.2%        | 5.0%       | 1.4%       | 1.4%       | 0.7%      | 1.4%       | 7.5%       | 100.0%       |
| <i>2019-2020</i>  |              |              |            |            |            |           |            |            |              |
| Lower Division    | 734          | 271          | 95         | 35         | 21         | 9         | 35         | 19         | 1,219        |
| Percent           | 60.2%        | 22.2%        | 7.8%       | 2.9%       | 1.7%       | 0.7%      | 2.9%       | 1.6%       | 100.0%       |
| Upper Division    | 2,259        | 1,176        | 314        | 78         | 56         | 15        | 88         | 216        | 4,202        |
| Percent           | 53.8%        | 28.0%        | 7.5%       | 1.9%       | 1.3%       | 0.4%      | 2.1%       | 5.1%       | 100.0%       |
| Graduate          | 2,011        | 657          | 90         | 9          | 31         | 11        | 89         | 525        | 3,423        |
| Percent           | 58.7%        | 19.2%        | 2.6%       | 0.3%       | 0.9%       | 0.3%      | 2.6%       | 15.3%      | 100.0%       |
| <b>Total</b>      | <b>5,004</b> | <b>2,104</b> | <b>499</b> | <b>122</b> | <b>108</b> | <b>35</b> | <b>212</b> | <b>760</b> | <b>8,844</b> |
| Percent           | 56.6%        | 23.8%        | 5.6%       | 1.4%       | 1.2%       | 0.4%      | 2.4%       | 8.6%       | 100.0%       |

Grade Distribution of Part-Time Faculty for 2019-20  
College of Education & Health Professions



| Grade Distribution by Level of Instruction - College of Education & Health Professions |       |       |      |      |      |      |      |       |        |
|--|-------|-------|------|------|------|------|------|-------|--------|
| Part-Time Faculty  | A's   | B's   | C's  | D's  | F's  | WF's | W's  | Other | Total  |
| <i>2016-2017</i>   |       |       |      |      |      |      |      |       |        |
| Lower Division   | 1,527 | 363   | 130  | 31   | 46   | 36   | 41   | 54    | 2,228  |
| Percent  | 68.5% | 16.3% | 5.8% | 1.4% | 2.1% | 1.6% | 1.8% | 2.4%  | 100.0% |
| Upper Division   | 527   | 224   | 104  | 12   | 22   | 12   | 10   | 216   | 1,127  |
| Percent  | 46.8% | 19.9% | 9.2% | 1.1% | 2.0% | 1.1% | 0.9% | 19.2% | 100.0% |
| Graduate   | 1,450 | 173   | 44   | 8    | 42   | 23   | 25   | 515   | 2,280  |
| Percent  | 63.6% | 7.6%  | 1.9% | 0.4% | 1.8% | 1.0% | 1.1% | 22.6% | 100.0% |
| Total  | 3,504 | 760   | 278  | 51   | 110  | 71   | 76   | 785   | 5,635  |
| Percent  | 62.2% | 13.5% | 4.9% | 0.9% | 2.0% | 1.3% | 1.3% | 13.9% | 100.0% |
| <i>2017-2018</i>   |       |       |      |      |      |      |      |       |        |
| Lower Division   | 1,673 | 468   | 118  | 31   | 39   | 26   | 33   | 47    | 2,435  |
| Percent  | 68.7% | 19.2% | 4.8% | 1.3% | 1.6% | 1.1% | 1.4% | 1.9%  | 100.0% |
| Upper Division   | 579   | 185   | 73   | 15   | 27   | 6    | 18   | 245   | 1,148  |
| Percent  | 50.4% | 16.1% | 6.4% | 1.3% | 2.4% | 0.5% | 1.6% | 21.3% | 100.0% |
| Graduate   | 1,427 | 198   | 24   | 5    | 21   | 16   | 39   | 601   | 2,331  |
| Percent  | 61.2% | 8.5%  | 1.0% | 0.2% | 0.9% | 0.7% | 1.7% | 25.8% | 100.0% |
| Total  | 3,679 | 851   | 215  | 51   | 87   | 48   | 90   | 893   | 5,914  |
| Percent  | 62.2% | 14.4% | 3.6% | 0.9% | 1.5% | 0.8% | 1.5% | 15.1% | 100.0% |
| <i>2018-19</i>   |       |       |      |      |      |      |      |       |        |
| Lower Division   | 1,796 | 347   | 106  | 27   | 47   | 35   | 55   | 63    | 2,476  |
| Percent  | 72.5% | 14.0% | 4.3% | 1.1% | 1.9% | 1.4% | 2.2% | 2.5%  | 100.0% |
| Upper Division   | 681   | 219   | 114  | 21   | 23   | 9    | 10   | 241   | 1,318  |
| Percent  | 51.7% | 16.6% | 8.6% | 1.6% | 1.7% | 0.7% | 0.8% | 18.3% | 100.0% |
| Graduate   | 1,098 | 142   | 25   | 0    | 25   | 10   | 24   | 268   | 1,592  |
| Percent  | 69.0% | 8.9%  | 1.6% | 0.0% | 1.6% | 0.6% | 1.5% | 16.8% | 100.0% |
| Total  | 3,575 | 708   | 245  | 48   | 95   | 54   | 89   | 572   | 5,386  |
| Percent  | 66.4% | 13.1% | 4.5% | 0.9% | 1.8% | 1.0% | 1.7% | 10.6% | 100.0% |
| <i>2019-20</i>   |       |       |      |      |      |      |      |       |        |
| Lower Division   | 1,762 | 381   | 137  | 32   | 74   | 17   | 89   | 55    | 2,547  |
| Percent  | 69.2% | 15.0% | 5.4% | 1.3% | 2.9% | 0.7% | 3.5% | 2.2%  | 100.0% |
| Upper Division   | 543   | 130   | 33   | 9    | 13   | 0    | 8    | 212   | 948    |
| Percent  | 57.3% | 13.7% | 3.5% | 0.9% | 1.4% | 0.0% | 0.8% | 22.4% | 100.0% |
| Graduate   | 1,119 | 145   | 20   | 2    | 13   | 7    | 28   | 138   | 1,472  |
| Percent  | 76.0% | 9.9%  | 1.4% | 0.1% | 0.9% | 0.5% | 1.9% | 9.4%  | 100.0% |
| Total  | 3,424 | 656   | 190  | 43   | 100  | 24   | 125  | 405   | 4,967  |
| Percent  | 68.9% | 13.2% | 3.8% | 0.9% | 2.0% | 0.5% | 2.5% | 8.2%  | 100.0% |

Grade Distribution of All Faculty for 2019-20  
College of Education & Health Professions



| Grade Distribution by Level of Instruction - College of Education & Health Professions |       |       |      |      |      |      |      |       |        |
|--|-------|-------|------|------|------|------|------|-------|--------|
| All Faculty  | A's   | B's   | C's  | D's  | F's  | WF's | W's  | Other | Total  |
| <i>2016-2017</i>   |       |       |      |      |      |      |      |       |        |
| Lower Division   | 2,271 | 673   | 240  | 62   | 71   | 51   | 64   | 75    | 3,507  |
| Percent  | 64.8% | 19.2% | 6.8% | 1.8% | 2.0% | 1.5% | 1.8% | 2.1%  | 100.0% |
| Upper Division   | 2,803 | 1,304 | 444  | 137  | 89   | 36   | 54   | 455   | 5,322  |
| Percent  | 52.7% | 24.5% | 8.3% | 2.6% | 1.7% | 0.7% | 1.0% | 8.5%  | 100.0% |
| Graduate   | 4,095 | 571   | 117  | 25   | 83   | 60   | 87   | 981   | 6,019  |
| Percent  | 68.0% | 9.5%  | 1.9% | 0.4% | 1.4% | 1.0% | 1.4% | 16.3% | 100.0% |
| Total  | 9,169 | 2,548 | 801  | 224  | 243  | 147  | 205  | 1,511 | 14,848 |
| Percent  | 61.8% | 17.2% | 5.4% | 1.5% | 1.6% | 1.0% | 1.4% | 10.2% | 100.0% |
| <i>2017-2018</i>   |       |       |      |      |      |      |      |       |        |
| Lower Division   | 2,377 | 713   | 193  | 59   | 66   | 41   | 56   | 71    | 3,576  |
| Percent  | 66.5% | 19.9% | 5.4% | 1.6% | 1.8% | 1.1% | 1.6% | 2.0%  | 100.0% |
| Upper Division   | 2,978 | 1,148 | 384  | 104  | 77   | 28   | 82   | 424   | 5,225  |
| Percent  | 57.0% | 22.0% | 7.3% | 2.0% | 1.5% | 0.5% | 1.6% | 8.1%  | 100.0% |
| Graduate   | 4,571 | 736   | 99   | 16   | 93   | 35   | 107  | 1,046 | 6,703  |
| Percent  | 68.2% | 11.0% | 1.5% | 0.2% | 1.4% | 0.5% | 1.6% | 15.6% | 100.0% |
| Total  | 9,926 | 2,597 | 676  | 179  | 236  | 104  | 245  | 1,541 | 15,504 |
| Percent  | 64.0% | 16.8% | 4.4% | 1.2% | 1.5% | 0.7% | 1.6% | 9.9%  | 100.0% |
| <i>2018-2019</i>   |       |       |      |      |      |      |      |       |        |
| Lower Division   | 2,538 | 599   | 183  | 58   | 65   | 55   | 75   | 81    | 3,654  |
| Percent  | 69.5% | 16.4% | 5.0% | 1.6% | 1.8% | 1.5% | 2.1% | 2.2%  | 100.0% |
| Upper Division   | 2,854 | 1,315 | 367  | 93   | 82   | 25   | 48   | 445   | 5,229  |
| Percent  | 54.6% | 25.1% | 7.0% | 1.8% | 1.6% | 0.5% | 0.9% | 8.5%  | 100.0% |
| Graduate   | 3,391 | 707   | 124  | 16   | 65   | 35   | 85   | 694   | 5,117  |
| Percent  | 66.3% | 13.8% | 2.4% | 0.3% | 1.3% | 0.7% | 1.7% | 13.6% | 100.0% |
| Total  | 8,783 | 2,621 | 674  | 167  | 212  | 115  | 208  | 1,220 | 14,000 |
| Percent  | 62.7% | 18.7% | 4.8% | 1.2% | 1.5% | 0.8% | 1.5% | 8.7%  | 100.0% |
| <i>2019-2020</i>   |       |       |      |      |      |      |      |       |        |
| Lower Division   | 2,496 | 652   | 232  | 67   | 95   | 26   | 124  | 74    | 3,766  |
| Percent  | 66.3% | 17.3% | 6.2% | 1.8% | 2.5% | 0.7% | 3.3% | 2.0%  | 100.0% |
| Upper Division   | 2,802 | 1,306 | 347  | 87   | 69   | 15   | 96   | 428   | 5,150  |
| Percent  | 54.4% | 25.4% | 6.7% | 1.7% | 1.3% | 0.3% | 1.9% | 8.3%  | 100.0% |
| Graduate   | 3,130 | 802   | 110  | 11   | 44   | 18   | 117  | 663   | 4,895  |
| Percent  | 63.9% | 16.4% | 2.2% | 0.2% | 0.9% | 0.4% | 2.4% | 13.5% | 100.0% |
| Total  | 8,428 | 2,760 | 689  | 165  | 208  | 59   | 337  | 1,165 | 13,811 |
| Percent  | 61.0% | 20.0% | 5.0% | 1.2% | 1.5% | 0.4% | 2.4% | 8.4%  | 100.0% |