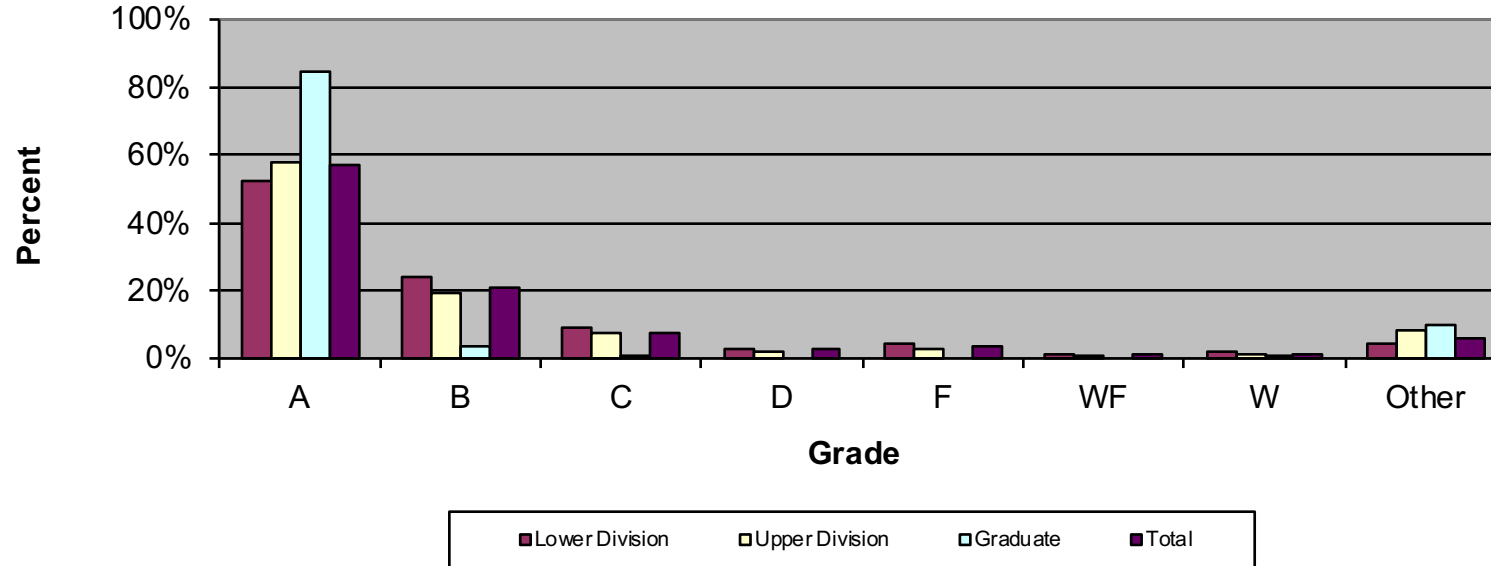


CSU Facts & Figures 2019: Grade Distribution

Grade Distribution of Full-Time Faculty for 2018-19
College of the Arts

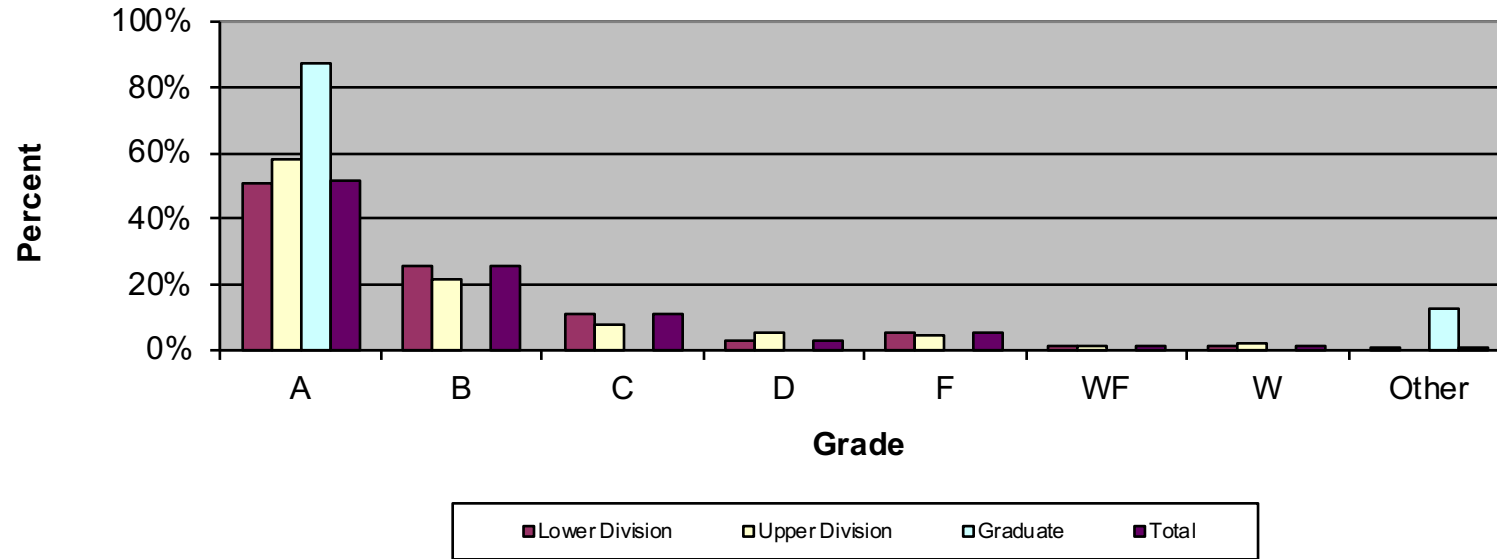


Grade Distribution by Level of Instruction - College of the Arts

Full-Time Faculty	A's	B's	C's	D's	F's	WF's	W's	Other	Total
<i>2015-2016</i>									
Lower Division	1,507	946	388	98	166	74	96	109	3,384
Percent	44.5%	28.0%	11.5%	2.9%	4.9%	2.2%	2.8%	3.2%	100.0%
Upper Division	1,623	629	263	50	56	13	44	260	2,938
Percent	55.2%	21.4%	9.0%	1.7%	1.9%	0.4%	1.5%	8.8%	100.0%
Graduate	313	43	6	0	4	2	3	61	432
Percent	72.5%	10.0%	1.4%	0.0%	0.9%	0.5%	0.7%	14.1%	100.0%
Total	3,443	1,618	657	148	226	89	143	430	6,754

Percent	51.0%	24.0%	9.7%	2.2%	3.3%	1.3%	2.1%	6.4%	100.0%
<i>2016-2017</i>	A's	B's	C's	D's	F's	WF's	W's	Other	Total
Lower Division	1,766	947	389	94	139	78	72	91	3,576
Percent	49.4%	26.5%	10.9%	2.6%	3.9%	2.2%	2.0%	2.5%	100.0%
Upper Division	1,718	668	282	62	76	29	44	292	3,171
Percent	54.2%	21.1%	8.9%	2.0%	2.4%	0.9%	1.4%	9.2%	100.0%
Graduate	437	33	8	2	1	1	1	61	544
Percent	80.3%	6.1%	1.5%	0.4%	0.2%	0.2%	0.2%	11.2%	100.0%
Total	3,921	1,648	679	158	216	108	117	444	7,291
Percent	53.8%	22.6%	9.3%	2.2%	3.0%	1.5%	1.6%	6.1%	100.0%
<i>2017-2018</i>	A's	B's	C's	D's	F's	WF's	W's	Other	Total
Lower Division	2,017	1,024	391	111	185	46	63	115	3,952
Percent	51.0%	25.9%	9.9%	2.8%	4.7%	1.2%	1.6%	2.9%	100.0%
Upper Division	1,895	696	257	84	74	37	44	272	3,359
Percent	56.4%	20.7%	7.7%	2.5%	2.2%	1.1%	1.3%	8.1%	100.0%
Graduate	403	32	2	0	2	1	0	80	520
Percent	77.5%	6.2%	0.4%	0.0%	0.4%	0.2%	0.0%	15.4%	100.0%
Total	4,315	1,752	650	195	261	84	107	467	7,831
Percent	55.1%	22.4%	8.3%	2.5%	3.3%	1.1%	1.4%	6.0%	100.0%
<i>2018-2019</i>	A's	B's	C's	D's	F's	WF's	W's	Other	Total
Lower Division	2,187	1,001	391	130	188	53	80	170	4,200
Percent	52.1%	23.8%	9.3%	3.1%	4.5%	1.3%	1.9%	4.0%	100.0%
Upper Division	2,060	698	256	81	95	21	42	295	3,548
Percent	58.1%	19.7%	7.2%	2.3%	2.7%	0.6%	1.2%	8.3%	100.0%
Graduate	485	22	4	0	0	0	2	58	571
Percent	84.9%	3.9%	0.7%	0.0%	0.0%	0.0%	0.4%	10.2%	100.0%
Total	4,732	1,721	651	211	283	74	124	523	8,319
Percent	56.9%	20.7%	7.8%	2.5%	3.4%	0.9%	1.5%	6.3%	100.0%

Grade Distribution of Part-Time Faculty for 2018-19
College of the Arts

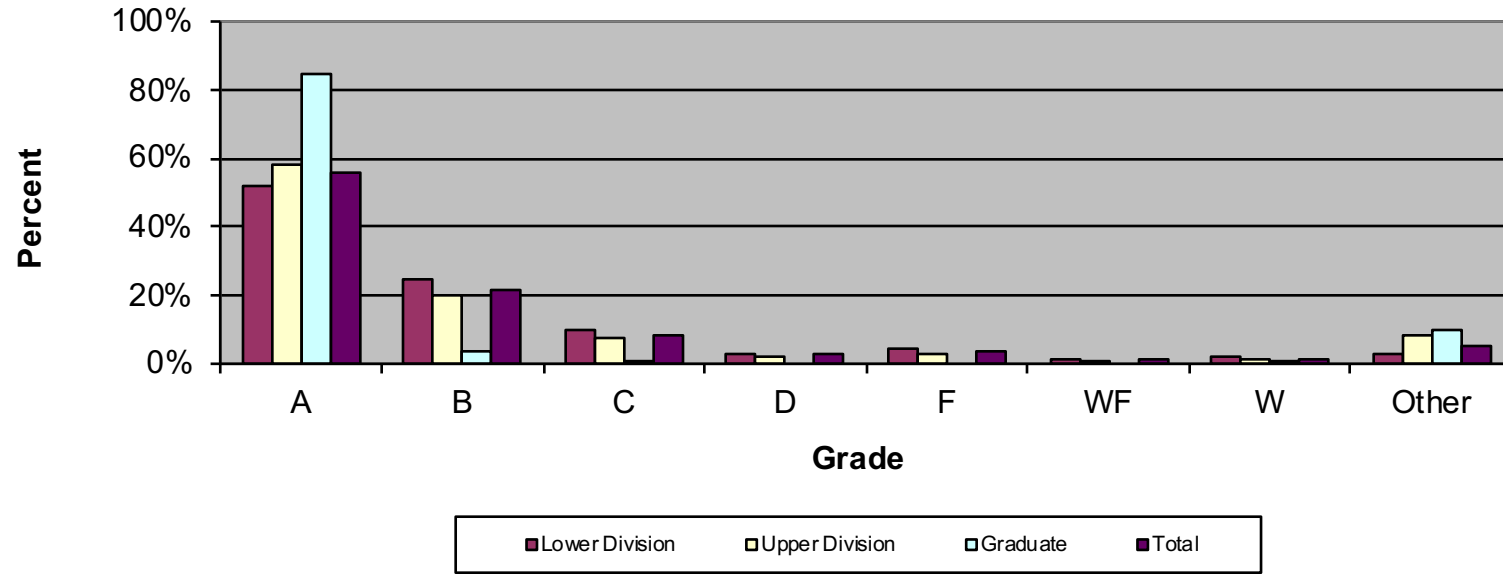


Grade Distribution by Level of Instruction - College of the Arts

Part-Time Faculty	A's	B's	C's	D's	F's	WF's	W's	Other	Total
<i>2015-2016</i>									
Lower Division	1,134	747	322	119	166	61	58	7	2,614
Percent	43.4%	28.6%	12.3%	4.6%	6.4%	2.3%	2.2%	0.3%	100.0%
Upper Division	287	143	54	16	14	8	9	0	531
Percent	54.0%	26.9%	10.2%	3.0%	2.6%	1.5%	1.7%	0.0%	100.0%
Graduate	30	6	0	0	0	0	0	0	36
Percent	83.3%	16.7%	0.0%	0.0%	0.0%	0.0%	0.0%	0.0%	100.0%
Total	1,451	896	376	135	180	69	67	7	3,181
Percent	45.6%	28.2%	11.8%	4.2%	5.7%	2.2%	2.1%	0.2%	100.0%

2016-2017	A's	B's	C's	D's	F's	WF's	W's	Other	Total
Lower Division	906	624	291	85	94	58	51	2	2,111
Percent	42.9%	29.6%	13.8%	4.0%	4.5%	2.7%	2.4%	0.1%	100.0%
Upper Division	115	53	43	7	10	0	2	1	231
Percent	49.8%	22.9%	18.6%	3.0%	4.3%	0.0%	0.9%	0.4%	100.0%
Graduate	17	2	0	0	0	0	0	0	19
Percent	89.5%	10.5%	0.0%	0.0%	0.0%	0.0%	0.0%	0.0%	100.0%
Total	1,038	679	334	92	104	58	53	3	2,361
Percent	44.0%	28.8%	14.1%	3.9%	4.4%	2.5%	2.2%	0.1%	100.0%
2017-2018	A's	B's	C's	D's	F's	WF's	W's	Other	Total
Lower Division	979	520	230	58	109	34	28	1	1,959
Percent	50.0%	26.5%	11.7%	3.0%	5.6%	1.7%	1.4%	0.1%	100.0%
Upper Division	76	20	7	4	1	0	1	1	110
Percent	69.1%	18.2%	6.4%	3.6%	0.9%	0.0%	0.9%	0.9%	100.0%
Graduate	30	1	0	0	0	0	0	0	31
Percent	96.8%	3.2%	0.0%	0.0%	0.0%	0.0%	0.0%	0.0%	100.0%
Total	1,085	541	237	62	110	34	29	2	2,100
Percent	51.7%	25.8%	11.3%	3.0%	5.2%	1.6%	1.4%	0.1%	100.0%
2018-2019	A's	B's	C's	D's	F's	WF's	W's	Other	Total
Lower Division	855	432	188	53	92	26	28	2	1,676
Percent	51.0%	25.8%	11.2%	3.2%	5.5%	1.6%	1.7%	0.1%	100.0%
Upper Division	54	20	7	5	4	1	2	0	93
Percent	58.1%	21.5%	7.5%	5.4%	4.3%	1.1%	2.2%	0.0%	100.0%
Graduate	7	0	0	0	0	0	0	1	8
Percent	87.5%	0.0%	0.0%	0.0%	0.0%	0.0%	0.0%	12.5%	100.0%
Total	916	452	195	58	96	27	30	3	1,777
Percent	51.5%	25.4%	11.0%	3.3%	5.4%	1.5%	1.7%	0.2%	100.0%

Grade Distribution of All Faculty for 2018-19
College of the Arts



Grade Distribution by Level of Instruction - College of the Arts

All Faculty	A's	B's	C's	D's	F's	WF's	W's	Other	Total
<i>2015-2016</i>									
Lower Division	2,641	1,693	710	217	332	135	154	116	5,998
Percent	44.0%	28.2%	11.8%	3.6%	5.5%	2.3%	2.6%	1.9%	100.0%
Upper Division	1,910	772	317	66	70	21	53	260	3,469
Percent	55.1%	22.3%	9.1%	1.9%	2.0%	0.6%	1.5%	7.5%	100.0%
Graduate	343	49	6	0	4	2	3	61	468
Percent	73.3%	10.5%	1.3%	0.0%	0.9%	0.4%	0.6%	13.0%	100.0%
Total	4,894	2,514	1,033	283	406	158	210	437	9,935
Percent	49.3%	25.3%	10.4%	2.8%	4.1%	1.6%	2.1%	4.4%	100.0%
<i>2016-2017</i>	A's	B's	C's	D's	F's	WF's	W's	Other	Total

Lower Division	2,672	1,571	680	179	233	136	123	93	5,687
Percent	47.0%	27.6%	12.0%	3.1%	4.1%	2.4%	2.2%	1.6%	100.0%
Upper Division	1,833	721	325	69	86	29	46	293	3,402
Percent	53.9%	21.2%	9.6%	2.0%	2.5%	0.9%	1.4%	8.6%	100.0%
Graduate	454	35	8	2	1	1	1	61	563
Percent	80.6%	6.2%	1.4%	0.4%	0.2%	0.2%	0.2%	10.8%	100.0%
Total	4,959	2,327	1,013	250	320	166	170	447	9,652
Percent	51.4%	24.1%	10.5%	2.6%	3.3%	1.7%	1.8%	4.6%	100.0%
2017-2018	A's	B's	C's	D's	F's	WF's	W's	Other	Total
Lower Division	2,996	1,544	621	169	294	80	91	116	5,911
Percent	50.7%	26.1%	10.5%	2.9%	5.0%	1.4%	1.5%	2.0%	100.0%
Upper Division	1,971	716	264	88	75	37	45	273	3,469
Percent	56.8%	20.6%	7.6%	2.5%	2.2%	1.1%	1.3%	7.9%	100.0%
Graduate	433	33	2	0	2	1	0	80	551
Percent	78.6%	6.0%	0.4%	0.0%	0.4%	0.2%	0.0%	14.5%	100.0%
Total	5,400	2,293	887	257	371	118	136	469	9,931
Percent	54.4%	23.1%	8.9%	2.6%	3.7%	1.2%	1.4%	4.7%	100.0%
2018-2019	A's	B's	C's	D's	F's	WF's	W's	Other	Total
Lower Division	3,042	1,433	579	183	280	79	108	172	5,876
Percent	51.8%	24.4%	9.9%	3.1%	4.8%	1.3%	1.8%	2.9%	100.0%
Upper Division	2,114	718	263	86	99	22	44	295	3,641
Percent	58.1%	19.7%	7.2%	2.4%	2.7%	0.6%	1.2%	8.1%	100.0%
Graduate	492	22	4	0	0	0	2	59	579
Percent	85.0%	3.8%	0.7%	0.0%	0.0%	0.0%	0.3%	10.2%	100.0%
Total	5,648	2,173	846	269	379	101	154	526	10,096
Percent	55.9%	21.5%	8.4%	2.7%	3.8%	1.0%	1.5%	5.2%	100.0%