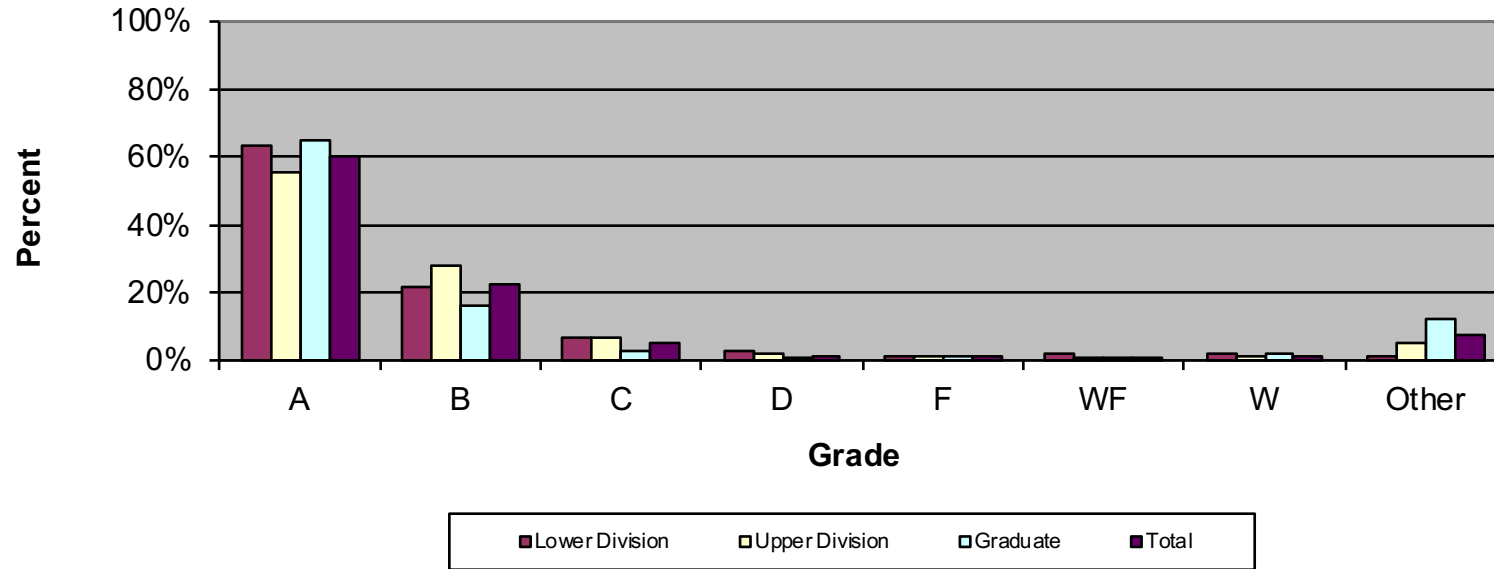


CSU Facts & Figures 2019: Grade Distribution

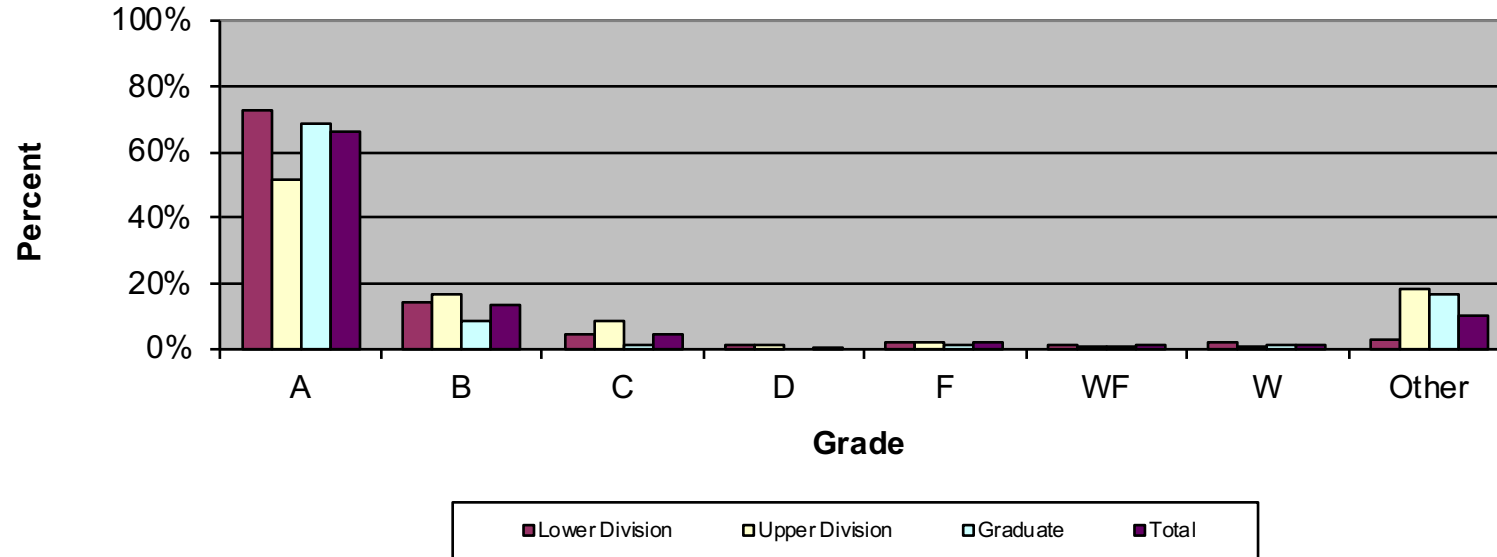
Grade Distribution of Full-Time Faculty for 2018-19
College of Education & Health Professions



Grade Distribution by Level of Instruction - College of Education & Health Professions									
Full-Time Faculty	A's	B's	C's	D's	F's	WF's	W's	Other	Total
<i>2015-2016</i>									
Lower Division	888	372	125	51	41	27	43	22	1,569
Percent	56.6%	23.7%	8.0%	3.3%	2.6%	1.7%	2.7%	1.4%	100.0%
Upper Division	2,269	1,080	271	85	80	38	62	229	4,114
Percent	55.2%	26.3%	6.6%	2.1%	1.9%	0.9%	1.5%	5.6%	100.0%
Graduate	2,346	370	43	8	39	23	55	488	3,372
Percent	69.6%	11.0%	1.3%	0.2%	1.2%	0.7%	1.6%	14.5%	100.0%
Total	5,503	1,822	439	144	160	88	160	739	9,055
Percent	60.8%	20.1%	4.8%	1.6%	1.8%	1.0%	1.8%	8.2%	100.0%
<i>2016-2017</i>	A's	B's	C's	D's	F's	WF's	W's	Other	Total

Lower Division	744	310	110	31	25	15	23	21	1,279
Percent	58.2%	24.2%	8.6%	2.4%	2.0%	1.2%	1.8%	1.6%	100.0%
Upper Division	2,276	1,080	340	125	67	24	44	239	4,195
Percent	54.3%	25.7%	8.1%	3.0%	1.6%	0.6%	1.0%	5.7%	100.0%
Graduate	2,645	398	73	17	41	37	62	466	3,739
Percent	70.7%	10.6%	2.0%	0.5%	1.1%	1.0%	1.7%	12.5%	100.0%
Total	5,665	1,788	523	173	133	76	129	726	9,213
Percent	61.5%	19.4%	5.7%	1.9%	1.4%	0.8%	1.4%	7.9%	100.0%
2017-2018	A's	B's	C's	D's	F's	WF's	W's	Other	Total
Lower Division	704	245	75	28	27	15	23	24	1,141
Percent	61.7%	21.5%	6.6%	2.5%	2.4%	1.3%	2.0%	2.1%	100.0%
Upper Division	2,399	963	311	89	50	22	64	179	4,077
Percent	58.8%	23.6%	7.6%	2.2%	1.2%	0.5%	1.6%	4.4%	100.0%
Graduate	3,144	538	75	11	72	19	68	445	4,372
Percent	71.9%	12.3%	1.7%	0.3%	1.6%	0.4%	1.6%	10.2%	100.0%
Total	6,247	1,746	461	128	149	56	155	648	9,590
Percent	65.1%	18.2%	4.8%	1.3%	1.6%	0.6%	1.6%	6.8%	100.0%
2018-2019	A's	B's	C's	D's	F's	WF's	W's	Other	Total
Lower Division	742	252	77	31	18	20	20	18	1,178
Percent	63.0%	21.4%	6.5%	2.6%	1.5%	1.7%	1.7%	1.5%	100.0%
Upper Division	2,173	1,096	253	72	59	16	38	204	3,911
Percent	55.6%	28.0%	6.5%	1.8%	1.5%	0.4%	1.0%	5.2%	100.0%
Graduate	2,293	565	99	16	40	25	61	426	3,525
Percent	65.0%	16.0%	2.8%	0.5%	1.1%	0.7%	1.7%	12.1%	100.0%
Total	5,208	1,913	429	119	117	61	119	648	8,614
Percent	60.5%	22.2%	5.0%	1.4%	1.4%	0.7%	1.4%	7.5%	100.0%

Grade Distribution of Part-Time Faculty for 2018-19
College of Education & Health Professions

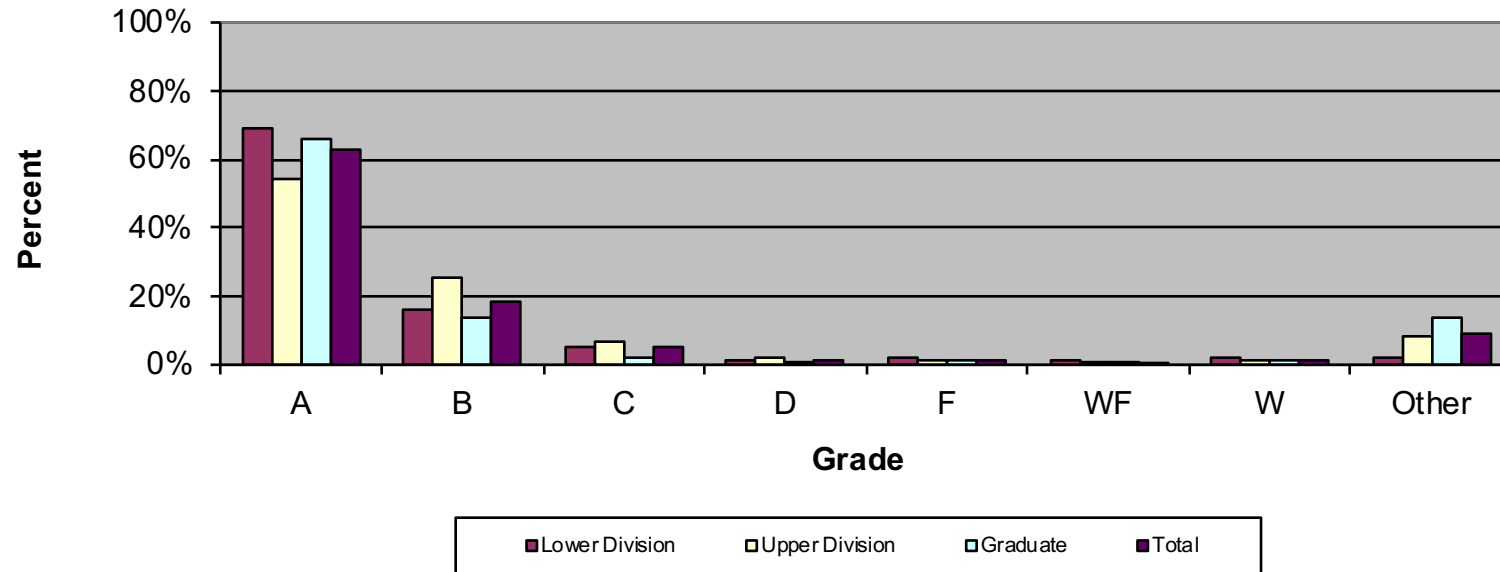


Grade Distribution by Level of Instruction - College of Education & Health Professions

Part-Time Faculty	A's	B's	C's	D's	F's	WF's	W's	Other	Total
<i>2015-2016</i>									
Lower Division	1,563	378	99	27	23	31	58	36	2,215
Percent	70.6%	17.1%	4.5%	1.2%	1.0%	1.4%	2.6%	1.6%	100.0%
Upper Division	507	293	120	48	22	7	24	298	1,319
Percent	38.4%	22.2%	9.1%	3.6%	1.7%	0.5%	1.8%	22.6%	100.0%
Graduate	1,199	158	36	3	25	23	46	327	1,817
Percent	66.0%	8.7%	2.0%	0.2%	1.4%	1.3%	2.5%	18.0%	100.0%
Total	3,269	829	255	78	70	61	128	661	5,351
Percent	61.1%	15.5%	4.8%	1.5%	1.3%	1.1%	2.4%	12.4%	100.0%
<i>2016-2017</i>									
Lower Division	1,527	363	130	31	46	36	41	54	2,228
Percent	68.5%	16.3%	5.8%	1.4%	2.1%	1.6%	1.8%	2.4%	100.0%

Upper Division	527	224	104	12	22	12	10	216	1,127
Percent	46.8%	19.9%	9.2%	1.1%	2.0%	1.1%	0.9%	19.2%	100.0%
Graduate	1,450	173	44	8	42	23	25	515	2,280
Percent	63.6%	7.6%	1.9%	0.4%	1.8%	1.0%	1.1%	22.6%	100.0%
Total	3,504	760	278	51	110	71	76	785	5,635
Percent	62.2%	13.5%	4.9%	0.9%	2.0%	1.3%	1.3%	13.9%	100.0%
2017-2018	A's	B's	C's	D's	F's	WF's	W's	Other	Total
Lower Division	1,673	468	118	31	39	26	33	47	2,435
Percent	68.7%	19.2%	4.8%	1.3%	1.6%	1.1%	1.4%	1.9%	100.0%
Upper Division	579	185	73	15	27	6	18	245	1,148
Percent	50.4%	16.1%	6.4%	1.3%	2.4%	0.5%	1.6%	21.3%	100.0%
Graduate	1,427	198	24	5	21	16	39	601	2,331
Percent	61.2%	8.5%	1.0%	0.2%	0.9%	0.7%	1.7%	25.8%	100.0%
Total	3,679	851	215	51	87	48	90	893	5,914
Percent	62.2%	14.4%	3.6%	0.9%	1.5%	0.8%	1.5%	15.1%	100.0%
2018-19	A's	B's	C's	D's	F's	WF's	W's	Other	Total
Lower Division	1,796	347	106	27	47	35	55	63	2,476
Percent	72.5%	14.0%	4.3%	1.1%	1.9%	1.4%	2.2%	2.5%	100.0%
Upper Division	681	219	114	21	23	9	10	241	1,318
Percent	51.7%	16.6%	8.6%	1.6%	1.7%	0.7%	0.8%	18.3%	100.0%
Graduate	1,098	142	25	0	25	10	24	268	1,592
Percent	69.0%	8.9%	1.6%	0.0%	1.6%	0.6%	1.5%	16.8%	100.0%
Total	3,575	708	245	48	95	54	89	572	5,386
Percent	66.4%	13.1%	4.5%	0.9%	1.8%	1.0%	1.7%	10.6%	100.0%

Grade Distribution of All Faculty for 2018-19
College of Education & Health Professions



Grade Distribution by Level of Instruction - College of Education & Health Professions

All Faculty	A's	B's	C's	D's	F's	WF's	W's	Other	Total
<i>2015-2016</i>									
Lower Division	2,451	750	224	78	64	58	101	58	3,784
Percent	64.8%	19.8%	5.9%	2.1%	1.7%	1.5%	2.7%	1.5%	100.0%
Upper Division	2,776	1,373	391	133	102	45	86	527	5,433
Percent	51.1%	25.3%	7.2%	2.4%	1.9%	0.8%	1.6%	9.7%	100.0%
Graduate	3,545	528	79	11	64	46	101	815	5,189
Percent	68.3%	10.2%	1.5%	0.2%	1.2%	0.9%	1.9%	15.7%	100.0%
Total	8,772	2,651	694	222	230	149	288	1,400	14,406
Percent	60.9%	18.4%	4.8%	1.5%	1.6%	1.0%	2.0%	9.7%	100.0%
<i>2016-2017</i>									
Lower Division	2,271	673	240	62	71	51	64	75	3,507
Percent	64.8%	19.2%	6.8%	1.8%	2.0%	1.5%	1.8%	2.1%	100.0%

Upper Division	2,803	1,304	444	137	89	36	54	455	5,322
Percent	52.7%	24.5%	8.3%	2.6%	1.7%	0.7%	1.0%	8.5%	100.0%
Graduate	4,095	571	117	25	83	60	87	981	6,019
Percent	68.0%	9.5%	1.9%	0.4%	1.4%	1.0%	1.4%	16.3%	100.0%
Total	9,169	2,548	801	224	243	147	205	1,511	14,848
Percent	61.8%	17.2%	5.4%	1.5%	1.6%	1.0%	1.4%	10.2%	100.0%
2017-2018	A's	B's	C's	D's	F's	WF's	W's	Other	Total
Lower Division	2,377	713	193	59	66	41	56	71	3,576
Percent	66.5%	19.9%	5.4%	1.6%	1.8%	1.1%	1.6%	2.0%	100.0%
Upper Division	2,978	1,148	384	104	77	28	82	424	5,225
Percent	57.0%	22.0%	7.3%	2.0%	1.5%	0.5%	1.6%	8.1%	100.0%
Graduate	4,571	736	99	16	93	35	107	1,046	6,703
Percent	68.2%	11.0%	1.5%	0.2%	1.4%	0.5%	1.6%	15.6%	100.0%
Total	9,926	2,597	676	179	236	104	245	1,541	15,504
Percent	64.0%	16.8%	4.4%	1.2%	1.5%	0.7%	1.6%	9.9%	100.0%
2018-2019	A's	B's	C's	D's	F's	WF's	W's	Other	Total
Lower Division	2,538	599	183	58	65	55	75	81	3,654
Percent	69.5%	16.4%	5.0%	1.6%	1.8%	1.5%	2.1%	2.2%	100.0%
Upper Division	2,854	1,315	367	93	82	25	48	445	5,229
Percent	54.6%	25.1%	7.0%	1.8%	1.6%	0.5%	0.9%	8.5%	100.0%
Graduate	3,391	707	124	16	65	35	85	694	5,117
Percent	66.3%	13.8%	2.4%	0.3%	1.3%	0.7%	1.7%	13.6%	100.0%
Total	8,783	2,621	674	167	212	115	208	1,220	14,000
Percent	62.7%	18.7%	4.8%	1.2%	1.5%	0.8%	1.5%	8.7%	100.0%