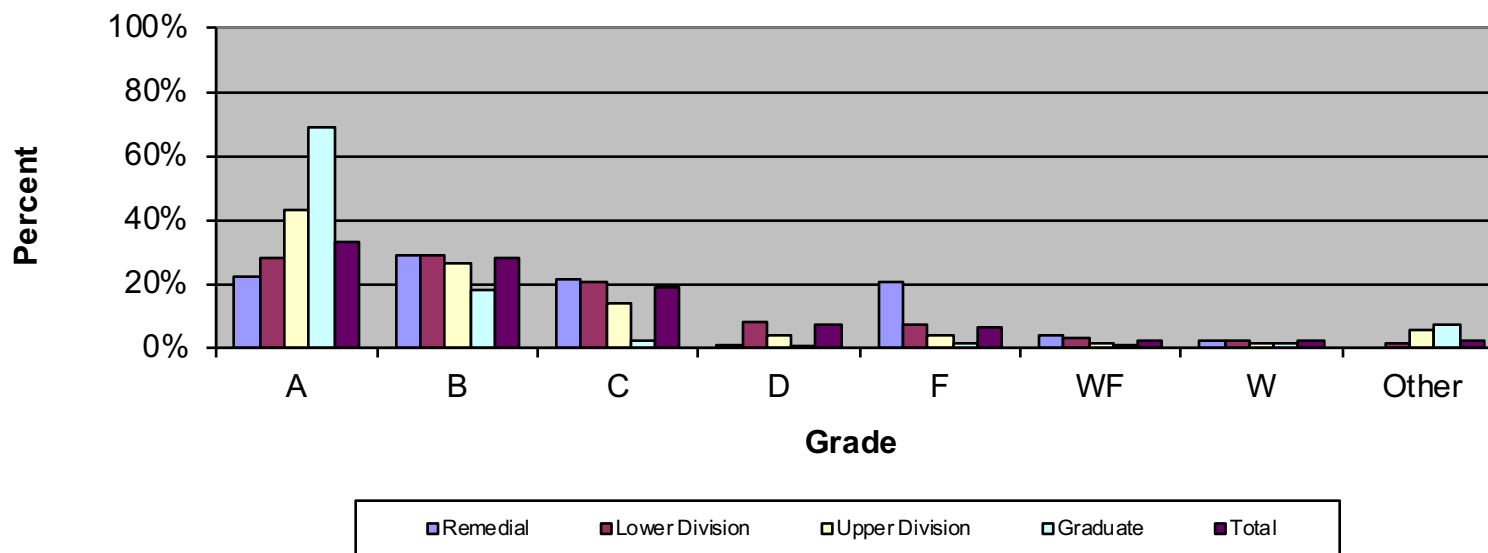


CSU Facts & Figures 2018: Grade Distribution

Grade Distribution of Full-Time Faculty for 2017-18 College of Letters & Sciences

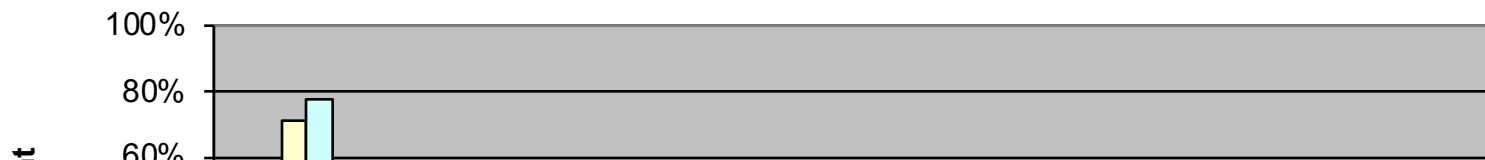


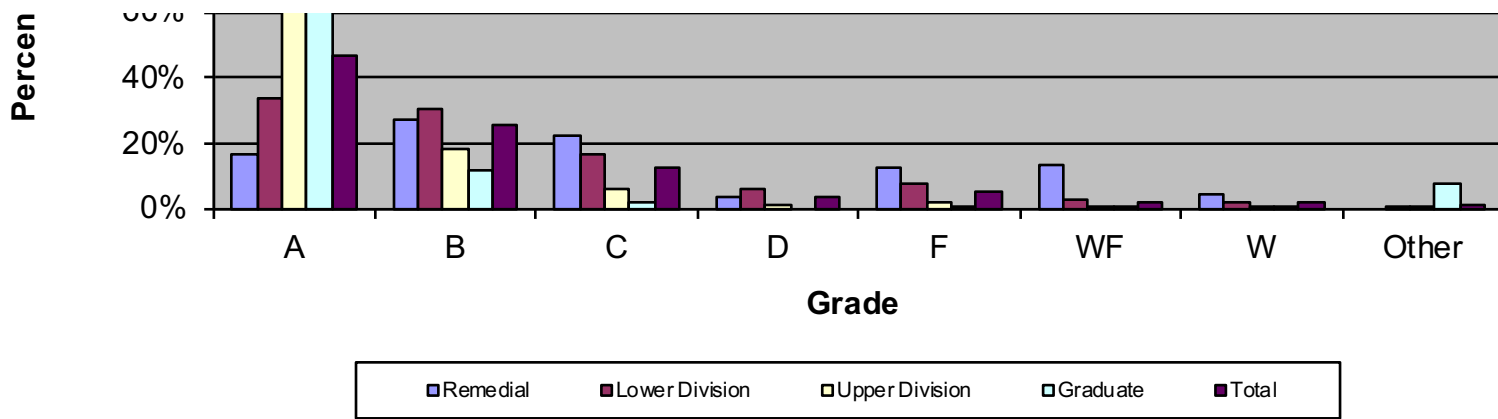
Grade Distribution by Level of Instruction - College of Letters & Sciences

Full-Time Faculty	A's	B's	C's	D's	F's	WF's	W's	Other	Total
2014-2015									
Remedial	71	138	156	58	81	52	13	2	571
Percent	12.4%	24.2%	27.3%	10.2%	14.2%	9.1%	2.3%	0.4%	
Lower Division	4,508	5,050	3,439	1,350	1,059	631	394	173	16,604
Percent	27.2%	30.4%	20.7%	8.1%	6.4%	3.8%	2.4%	1.0%	100.0%
Upper Division	2,439	1,766	891	239	245	167	112	182	6,041
Percent	40.4%	29.2%	14.7%	4.0%	4.1%	2.8%	1.9%	3.0%	100.0%
Graduate	808	191	44	4	9	4	17	42	1,119
Percent	72.2%	17.1%	3.9%	0.4%	0.8%	0.4%	1.5%	3.8%	100.0%
Total	7,826	7,145	4,530	1,651	1,394	854	536	399	24,335
Percent	32.2%	29.4%	18.6%	6.8%	5.7%	3.5%	2.2%	1.6%	100.0%
2015-2016									
Remedial	95	151	179	20	85	20	17	0	567
Percent	16.8%	26.6%	31.6%	3.5%	15.0%	3.5%	3.0%	0.0%	

Lower Division	4,895	5,191	3,686	1,418	1,083	586	471	200	17,530
Percent	27.9%	29.6%	21.0%	8.1%	6.2%	3.3%	2.7%	1.1%	100.0%
Upper Division	2,388	1,553	799	266	201	129	103	194	5,633
Percent	42.4%	27.6%	14.2%	4.7%	3.6%	2.3%	1.8%	3.4%	100.0%
Graduate	1,019	150	34	3	11	6	12	93	1,328
Percent	76.7%	11.3%	2.6%	0.2%	0.8%	0.5%	0.9%	7.0%	100.0%
Total	8,397	7,045	4,698	1,707	1,380	741	603	487	25,058
Percent	33.5%	28.1%	18.7%	6.8%	5.5%	3.0%	2.4%	1.9%	100.0%
2016-2017									
Remedial	79	118	117	15	89	34	14	1	467
Percent	16.9%	25.3%	25.1%	3.2%	19.1%	7.3%	3.0%	0.2%	100.0%
Lower Division	4,292	4,715	3,236	1,331	1,100	441	404	135	15,654
Percent	27.4%	30.1%	20.7%	8.5%	7.0%	2.8%	2.6%	0.9%	100.0%
Upper Division	2,060	1,479	790	219	171	93	107	212	5,131
Percent	40.1%	28.8%	15.4%	4.3%	3.3%	1.8%	2.1%	4.1%	100.0%
Graduate	659	186	35	9	14	13	10	137	1,063
Percent	62.0%	17.5%	3.3%	0.8%	1.3%	1.2%	0.9%	12.9%	100.0%
Total	7,090	6,498	4,178	1,574	1,374	581	535	485	22,315
Percent	31.8%	29.1%	18.7%	7.1%	6.2%	2.6%	2.4%	2.2%	100.0%
2017-2018									
Remedial	73	95	70	2	68	14	6	0	328
Percent	22.3%	29.0%	21.3%	0.6%	20.7%	4.3%	1.8%	0.0%	100.0%
Lower Division	4,432	4,534	3,267	1,310	1,120	448	363	200	15,674
Percent	28.3%	28.9%	20.8%	8.4%	7.1%	2.9%	2.3%	1.3%	100.0%
Upper Division	2,171	1,336	682	207	201	84	88	278	5,047
Percent	43.0%	26.5%	13.5%	4.1%	4.0%	1.7%	1.7%	5.5%	100.0%
Graduate	430	113	14	6	8	4	7	46	628
Percent	68.5%	18.0%	2.2%	1.0%	1.3%	0.6%	1.1%	7.3%	100.0%
Total	7,106	6,078	4,033	1,525	1,397	550	464	524	21,677
Percent	32.8%	28.0%	18.6%	7.0%	6.4%	2.5%	2.1%	2.4%	100.0%

Grade Distribution of Part-Time Faculty for 2017-18
College of Letters & Sciences

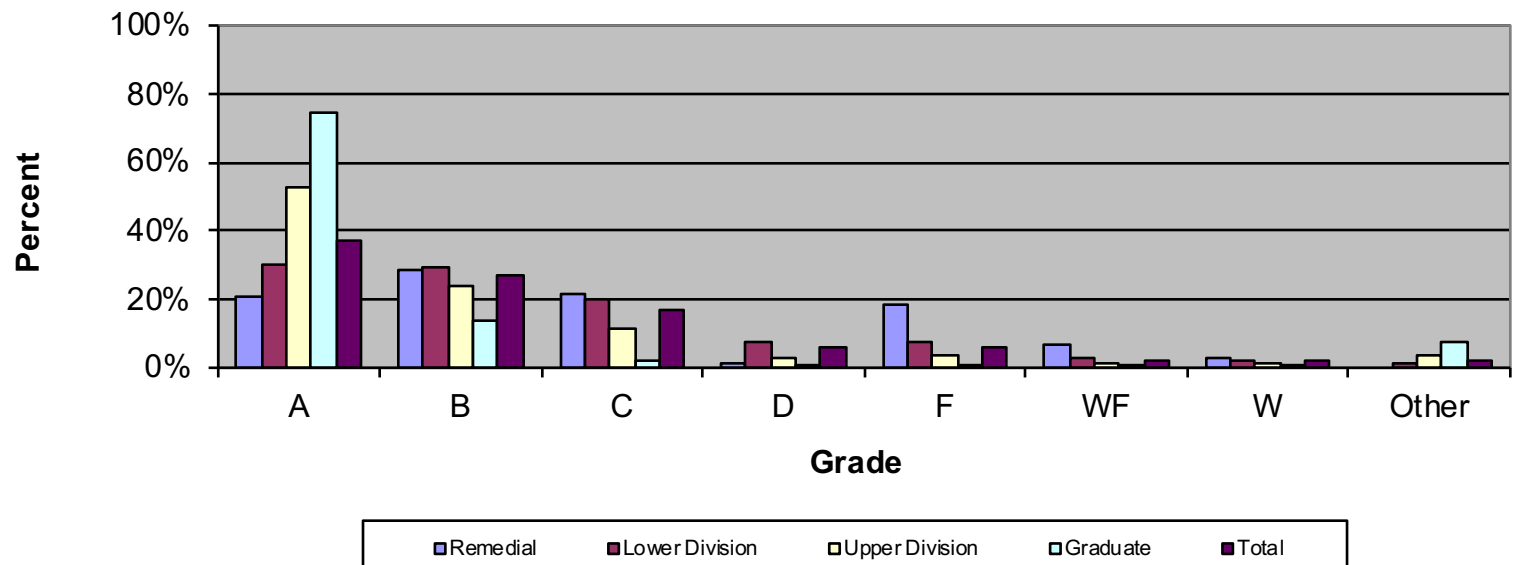




Grade Distribution by Level of Instruction - College of Letters & Sciences									
Part-Time Faculty	A's	B's	C's	D's	F's	WF's	W's	Other	Total
2014-2015									
Remedial	11	5	7	3	1	1	1	0	29
Percent	37.9%	17.2%	24.1%	10.3%	3.4%	3.4%	3.4%	0.0%	100.0%
Lower Division	2,873	2,260	1,355	457	507	342	245	21	8,060
Percent	35.6%	28.0%	16.8%	5.7%	6.3%	4.2%	3.0%	0.3%	100.0%
Upper Division	1,325	346	72	13	15	13	9	0	1,793
Percent	73.9%	19.3%	4.0%	0.7%	0.8%	0.7%	0.5%	0.0%	100.0%
Graduate	520	77	17	0	10	4	14	38	680
Percent	76.5%	11.3%	2.5%	0.0%	1.5%	0.6%	2.1%	5.6%	100.0%
Total	4,729	2,688	1,451	473	533	360	269	59	10,562
Percent	44.8%	25.4%	13.7%	4.5%	5.0%	3.4%	2.5%	0.6%	100.0%
2015-2016									
Remedial	15	27	40	6	28	11	3	0	130
Percent	11.5%	20.8%	30.8%	4.6%	21.5%	8.5%	2.3%	0.0%	100.0%
Lower Division	2,307	1,573	1,000	343	383	218	203	27	6,054
Percent	38.1%	26.0%	16.5%	5.7%	6.3%	3.6%	3.4%	0.4%	100.0%
Upper Division	1,471	362	148	34	26	14	15	2	2,072
Percent	71.0%	17.5%	7.1%	1.6%	1.3%	0.7%	0.7%	0.1%	100.0%
Graduate	395	110	23	1	3	2	3	45	582
Percent	67.9%	18.9%	4.0%	0.2%	0.5%	0.3%	0.5%	7.7%	100.0%
Total	4,188	2,072	1,211	384	440	245	224	74	8,838
Percent	47.4%	23.4%	13.7%	4.3%	5.0%	2.8%	2.5%	0.8%	100.0%
2016-2017									
Remedial	20	47	48	4	18	6	2	0	145

Percent	13.8%	32.4%	33.1%	2.8%	12.4%	4.1%	1.4%	0.0%	100.0%
Lower Division	2,455	1,873	1,085	375	395	204	139	12	6,538
Percent	37.5%	28.6%	16.6%	5.7%	6.0%	3.1%	2.1%	0.2%	100.0%
Upper Division	1,417	425	139	28	15	15	15	5	2,059
Percent	68.8%	20.6%	6.8%	1.4%	0.7%	0.7%	0.7%	0.2%	100.0%
Graduate	543	125	38	6	10	8	11	1	742
Percent	73.2%	16.8%	5.1%	0.8%	1.3%	1.1%	1.5%	0.1%	100.0%
<i>Total</i>	4,435	2,470	1,310	413	438	233	167	18	9,484
Percent	46.8%	26.0%	13.8%	4.4%	4.6%	2.5%	1.8%	0.2%	100.0%
<i>2017-2018</i>									
Remedial	17	28	23	4	13	14	5	0	104
Percent	16.3%	26.9%	22.1%	3.8%	12.5%	13.5%	4.8%	0.0%	100.0%
Lower Division	2,020	1,804	1,002	349	440	184	134	9	5,942
Percent	34.0%	30.4%	16.9%	5.9%	7.4%	3.1%	2.3%	0.2%	100.0%
Upper Division	1,382	361	119	18	37	11	14	3	1,945
Percent	71.1%	18.6%	6.1%	0.9%	1.9%	0.6%	0.7%	0.2%	100.0%
Graduate	813	122	19	0	1	1	4	83	1,043
Percent	77.9%	11.7%	1.8%	0.0%	0.1%	0.1%	0.4%	8.0%	100.0%
<i>Total</i>	4,232	2,315	1,163	371	491	210	157	95	9,034
Percent	46.8%	25.6%	12.9%	4.1%	5.4%	2.3%	1.7%	1.1%	100.0%

Grade Distribution of All Faculty for 2017-18
College of Letters & Sciences



Grade Distribution by Level of Instruction - College of Letters & Sciences

All Faculty	A's	B's	C's	D's	F's	WF's	W's	Other	Total
<i>2014-2015</i>									
Remedial	82	143	163	61	82	53	14	2	600
Percent	13.7%	23.8%	27.2%	10.2%	13.7%	8.8%	2.3%	0.3%	100.0%
Lower Division	7,381	7,310	4,794	1,807	1,566	973	639	194	24,664
Percent	29.9%	29.6%	19.4%	7.3%	6.3%	3.9%	2.6%	0.8%	100.0%
Upper Division	3,764	2,112	963	252	260	180	121	182	7,834
Percent	48.0%	27.0%	12.3%	3.2%	3.3%	2.3%	1.5%	2.3%	100.0%
Graduate	1,328	268	61	4	19	8	31	80	1,799
Percent	73.8%	14.9%	3.4%	0.2%	1.1%	0.4%	1.7%	4.4%	100.0%
Total	12,555	9,833	5,981	2,124	1,927	1,214	805	458	34,897
Percent	36.0%	28.2%	17.1%	6.1%	5.5%	3.5%	2.3%	1.3%	100.0%
<i>2015-2016</i>									
Remedial	110	178	219	26	113	31	20	0	697
Percent									
Lower Division	7,202	6,764	4,686	1,761	1,466	804	674	227	23,584
Percent	30.5%	28.7%	19.9%	7.5%	6.2%	3.4%	2.9%	1.0%	100.0%
Upper Division	3,859	1,915	947	300	227	143	118	196	7,705
Percent	50.1%	24.9%	12.3%	3.9%	2.9%	1.9%	1.5%	2.5%	100.0%
Graduate	1,414	260	57	4	14	8	15	138	1,910
Percent	74.0%	13.6%	3.0%	0.2%	0.7%	0.4%	0.8%	7.2%	100.0%
Total	12,585	9,117	5,909	2,091	1,820	986	827	561	33,896
Percent	37.1%	26.9%	17.4%	6.2%	5.4%	2.9%	2.4%	1.7%	100.0%
<i>2016-2017</i>									
Remedial	99	165	165	19	107	40	16	1	612
Percent	16.2%	27.0%	27.0%	3.1%	17.5%	6.5%	2.6%	0.2%	100.0%
Lower Division	6,747	6,588	4,321	1,706	1,495	645	543	147	22,192
Percent	30.4%	29.7%	19.5%	7.7%	6.7%	2.9%	2.4%	0.7%	100.0%
Upper Division	3,477	1,904	929	247	186	108	122	217	7,190
Percent	48.4%	26.5%	12.9%	3.4%	2.6%	1.5%	1.7%	3.0%	100.0%
Graduate	1,202	311	73	15	24	21	21	138	1,805
Percent	66.6%	17.2%	4.0%	0.8%	1.3%	1.2%	1.2%	7.6%	100.0%
Total	11,525	8,968	5,488	1,987	1,812	814	702	503	31,799
Percent	36.2%	28.2%	17.3%	6.2%	5.7%	2.6%	2.2%	1.6%	100.0%
<i>2017-2018</i>									

Remedial	90	123	93	6	81	28	11	0	432
Percent	20.8%	28.5%	21.5%	1.4%	18.8%	6.5%	2.5%	0.0%	100.0%
Lower Division	6,452	6,338	4,269	1,659	1,560	632	497	209	21,616
Percent	29.8%	29.3%	19.7%	7.7%	7.2%	2.9%	2.3%	1.0%	100.0%
Upper Division	3,553	1,697	801	225	238	95	102	281	6,992
Percent	52.9%	24.3%	11.5%	3.2%	3.4%	1.4%	1.5%	4.0%	102.1%
Graduate	1,243	235	33	6	9	5	11	129	1,671
Percent	74.4%	14.1%	2.0%	0.4%	0.5%	0.3%	0.7%	7.7%	100.0%
Total	11,338	8,393	5,196	1,896	1,888	760	621	619	30,711
Percent	36.9%	27.3%	16.9%	6.2%	6.1%	2.5%	2.0%	2.0%	100.0%