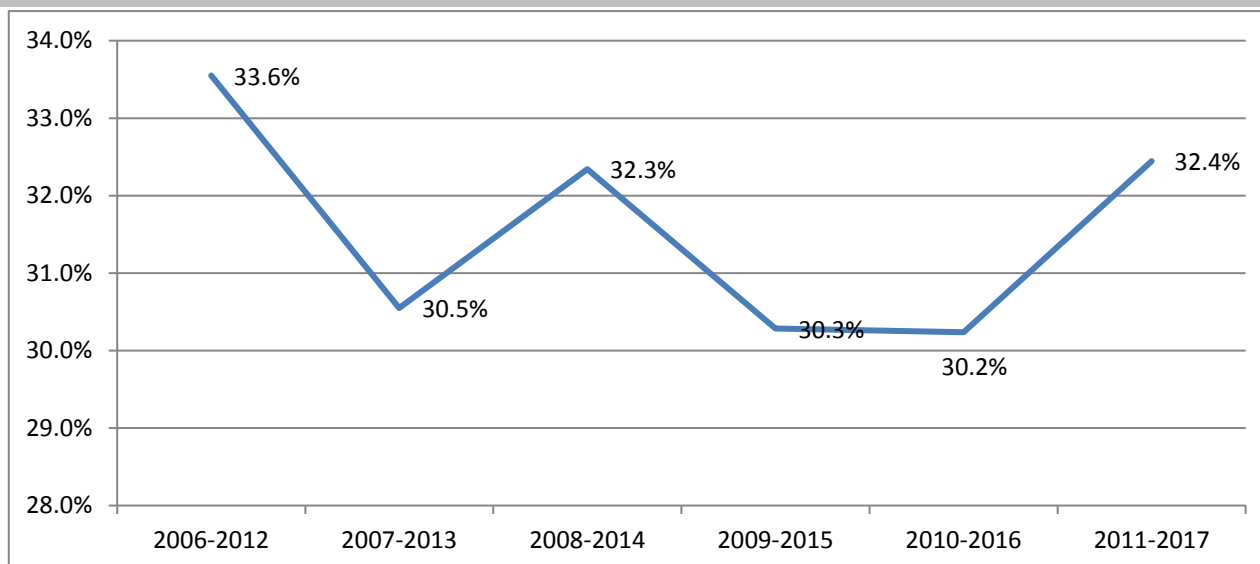


CSU Facts & Figures 2017: Graduation Rates



CSU Bachelor's Degree Six-Year Graduation Rate Trends: 2006-2012 through 2011-2017

Note: Graduation rates are for first-time full-time undergraduate student cohorts enrolled fall semester who entered CSU in a baccalaureate degree program in the fall or the preceding summer term.

Disaggregated Category	2006-2012	2007-2013	2008-2014	2009-2015	2010-2016	2011-2017
Total Cohort	33.6%	30.5%	32.3%	30.3%	30.2%	32.4%
Female						
African-American	25.9%	28.0%	29.4%	26.6%	28.0%	36.1%
White	43.4%	40.3%	36.3%	38.7%	36.5%	36.0%
Other	47.6%	30.3%	42.2%	37.5%	34.4%	33.3%
<i>Sub-Total</i>	37.3%	35.2%	31.3%	33.7%	32.7%	35.9%
Male						
African-American	17.6%	19.4%	23.4%	20.8%	15.1%	21.7%
White	31.5%	26.3%	31.9%	28.1%	31.3%	29.7%
Other	30.6%	23.8%	31.0%	18.4%	27.3%	22.2%
<i>Sub-Total</i>	27.8%	24.3%	29.5%	25.1%	26.2%	26.7%
Combined						
African-American	23.4%	24.8%	27.3%	24.7%	24.3%	31.9%
White	38.2%	33.9%	34.3%	34.1%	34.3%	33.3%
Other	40.2%	27.8%	36.3%	28.2%	30.8%	28.3%
<i>Total</i>	33.6%	30.5%	32.3%	30.3%	30.2%	32.4%
Non-Learning Support	39.5%	35.2%	37.7%	36.5%	34.5%	35.1%
Learning Support	11.4%	12.7%	12.0%	9.3%	13.1%	13.1%
<i>Total</i>	33.6%	30.5%	32.3%	30.3%	30.2%	32.4%
Traditional	34.5%	31.3%	33.6%	31.0%	30.9%	33.0%
Non-Traditional	11.6%	10.8%	7.3%	14.5%	17.2%	12.5%
<i>Total</i>	33.6%	30.5%	32.3%	30.3%	30.2%	32.4%