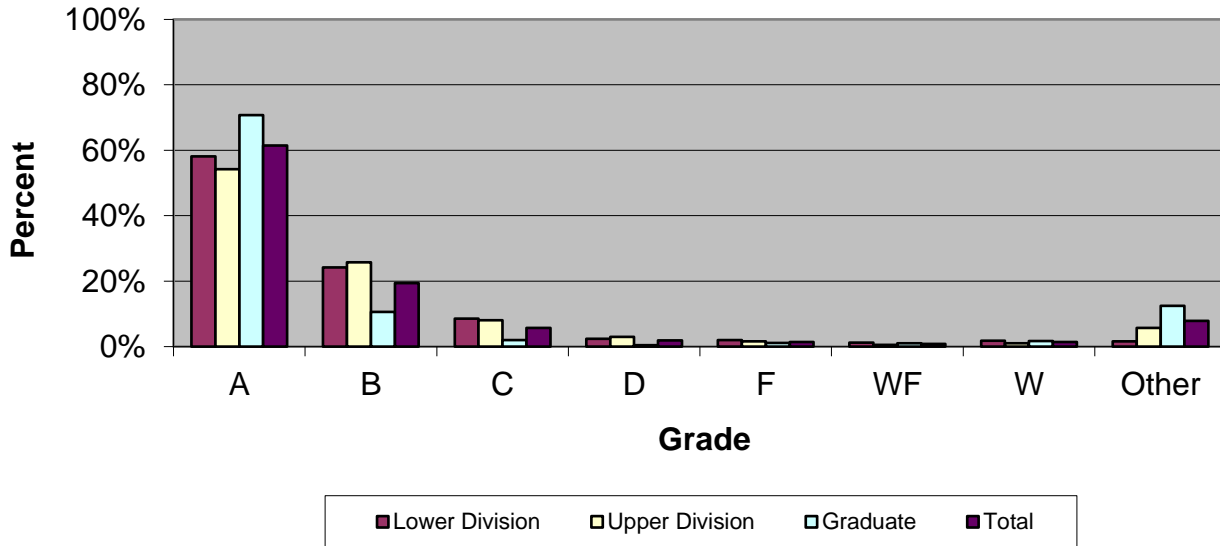


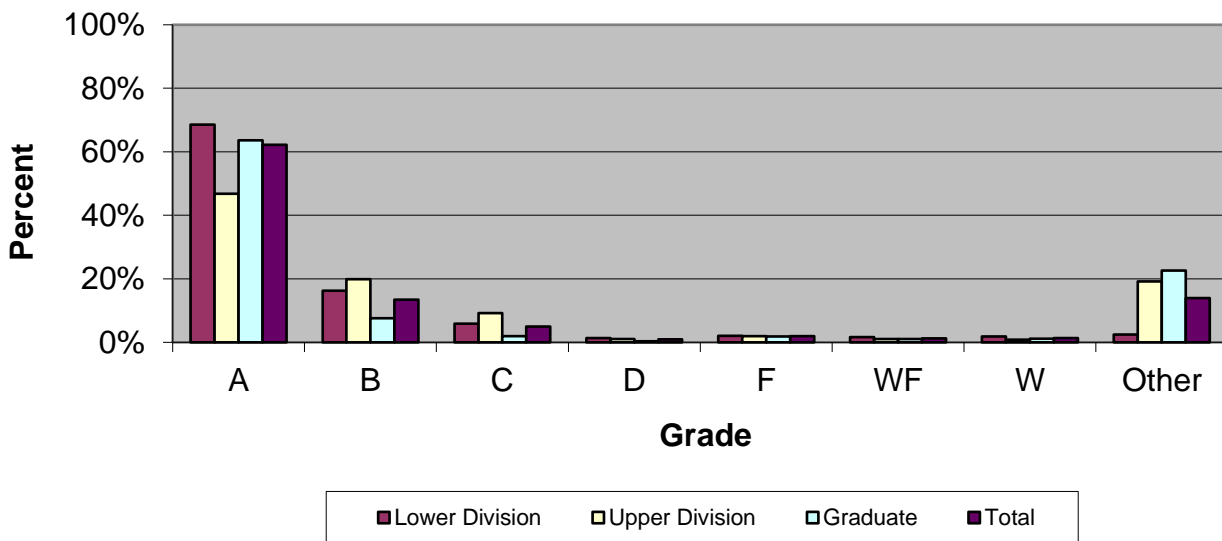
CSU Facts & Figures 2017: Grade Distribution

Grade Distribution of Full-Time Faculty for 2016-17 College of Education & Health Professions



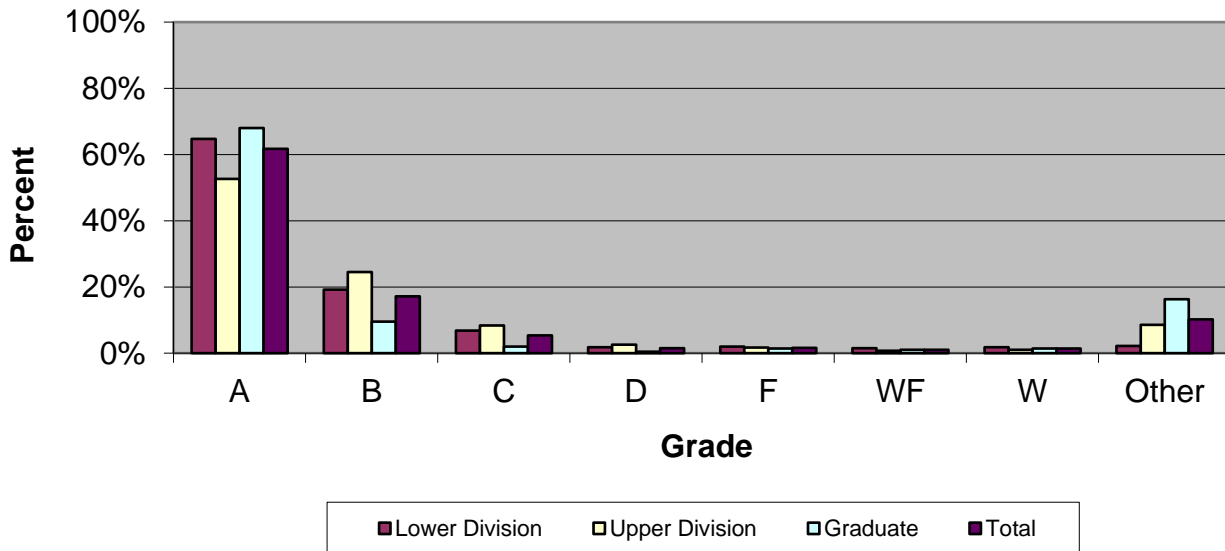
Grade Distribution by Level of Instruction - College of Education & Health Professions									
Full-Time Faculty	A's	B's	C's	D's	F's	WF's	W's	Other	Total
<i>2013-2014</i>									
Lower Division	1,002	518	157	45	43	29	56	3	1,853
Percent	54.1%	28.0%	8.5%	2.4%	2.3%	1.6%	3.0%	0.2%	100.0%
Upper Division	2,379	1,169	349	100	61	17	57	258	4,390
Percent	54.2%	26.6%	7.9%	2.3%	1.4%	0.4%	1.3%	5.9%	100.0%
Graduate	1,548	300	33	6	13	22	43	252	2,217
Percent	69.8%	13.5%	1.5%	0.3%	0.6%	1.0%	1.9%	11.4%	100.0%
Total	4,929	1,987	539	151	117	68	156	513	8,460
Percent	58.3%	23.5%	6.4%	1.8%	1.4%	0.8%	1.8%	6.1%	100.0%
<i>2014-2015</i>									
Lower Division	939	405	142	34	47	41	36	2	1,646
Percent	57.0%	24.6%	8.6%	2.1%	2.9%	2.5%	2.2%	0.1%	100.0%
Upper Division	2,383	1,183	363	96	64	24	61	226	4,400
Percent	54.2%	26.9%	8.3%	2.2%	1.5%	0.5%	1.4%	5.1%	100.0%
Graduate	1,835	299	66	11	24	32	67	369	2,703
Percent	67.9%	11.1%	2.4%	0.4%	0.9%	1.2%	2.5%	13.7%	100.0%
Total	5,157	1,887	571	141	135	97	164	597	8,749
Percent	58.9%	21.6%	6.5%	1.6%	1.5%	1.1%	1.9%	6.8%	100.0%
<i>2015-2016</i>									
Lower Division	888	372	125	51	41	27	43	22	1,569
Percent	56.6%	23.7%	8.0%	3.3%	2.6%	1.7%	2.7%	1.4%	100.0%
Upper Division	2,269	1,080	271	85	80	38	62	229	4,114
Percent	55.2%	26.3%	6.6%	2.1%	1.9%	0.9%	1.5%	5.6%	100.0%
Graduate	2,346	370	43	8	39	23	55	488	3,372
Percent	69.6%	11.0%	1.3%	0.2%	1.2%	0.7%	1.6%	14.5%	100.0%
Total	5,503	1,822	439	144	160	88	160	739	9,055
Percent	60.8%	20.1%	4.8%	1.6%	1.8%	1.0%	1.8%	8.2%	100.0%
<i>2016-2017</i>									
Lower Division	744	310	110	31	25	15	23	21	1,279
Percent	58.2%	24.2%	8.6%	2.4%	2.0%	1.2%	1.8%	1.6%	100.0%
Upper Division	2,276	1,080	340	125	67	24	44	239	4,195
Percent	54.3%	25.7%	8.1%	3.0%	1.6%	0.6%	1.0%	5.7%	100.0%
Graduate	2,645	398	73	17	41	37	62	466	3,739
Percent	70.7%	10.6%	2.0%	0.5%	1.1%	1.0%	1.7%	12.5%	100.0%
Total	5,665	1,788	523	173	133	76	129	726	9,213
Percent	61.5%	19.4%	5.7%	1.9%	1.4%	0.8%	1.4%	7.9%	100.0%

Grade Distribution of Part-Time Faculty for 2016-17
College of Education & Health Professions



Grade Distribution by Level of Instruction - College of Education & Health Professions									
Part-Time Faculty	A's	B's	C's	D's	F's	WF's	W's	Other	Total
<i>2013-2014</i>									
Lower Division	1,568	339	97	33	32	40	47	81	2,237
Percent	70.1%	15.2%	4.3%	1.5%	1.4%	1.8%	2.1%	3.6%	100.0%
Upper Division	567	222	81	25	8	2	18	463	1,386
Percent	40.9%	16.0%	5.8%	1.8%	0.6%	0.1%	1.3%	33.4%	100.0%
Graduate	470	67	9	0	2	5	20	218	791
Percent	59.4%	8.5%	1.1%	0.0%	0.3%	0.6%	2.5%	27.6%	100.0%
Total	2,605	628	187	58	42	47	85	762	4,414
Percent	59.0%	14.2%	4.2%	1.3%	1.0%	1.1%	1.9%	17.3%	100.0%
<i>2014-2015</i>									
Lower Division	1,621	408	117	35	36	46	57	97	2,417
Percent	67.1%	16.9%	4.8%	1.4%	1.5%	1.9%	2.4%	4.0%	100.0%
Upper Division	430	282	104	45	14	11	15	320	1,221
Percent	35.2%	23.1%	8.5%	3.7%	1.1%	0.9%	1.2%	26.2%	100.0%
Graduate	762	117	22	4	11	15	27	307	1,265
Percent	60.2%	9.2%	1.7%	0.3%	0.9%	1.2%	2.1%	24.3%	100.0%
Total	2,813	807	243	84	61	72	99	724	4,903
Percent	57.4%	16.5%	5.0%	1.7%	1.2%	1.5%	2.0%	14.8%	100.0%
<i>2015-2016</i>									
Lower Division	1,563	378	99	27	23	31	58	36	2,215
Percent	70.6%	17.1%	4.5%	1.2%	1.0%	1.4%	2.6%	1.6%	100.0%
Upper Division	507	293	120	48	22	7	24	298	1,319
Percent	38.4%	22.2%	9.1%	3.6%	1.7%	0.5%	1.8%	22.6%	100.0%
Graduate	1,199	158	36	3	25	23	46	327	1,817
Percent	66.0%	8.7%	2.0%	0.2%	1.4%	1.3%	2.5%	18.0%	100.0%
Total	3,269	829	255	78	70	61	128	661	5,351
Percent	61.1%	15.5%	4.8%	1.5%	1.3%	1.1%	2.4%	12.4%	100.0%
<i>2016-2017</i>									
Lower Division	1,527	363	130	31	46	36	41	54	2,228
Percent	68.5%	16.3%	5.8%	1.4%	2.1%	1.6%	1.8%	2.4%	100.0%
Upper Division	527	224	104	12	22	12	10	216	1,127
Percent	46.8%	19.9%	9.2%	1.1%	2.0%	1.1%	0.9%	19.2%	100.0%
Graduate	1,450	173	44	8	42	23	25	515	2,280
Percent	63.6%	7.6%	1.9%	0.4%	1.8%	1.0%	1.1%	22.6%	100.0%
Total	3,504	760	278	51	110	71	76	785	5,635
Percent	62.2%	13.5%	4.9%	0.9%	2.0%	1.3%	1.3%	13.9%	100.0%

Grade Distribution of All Faculty for 2016-17
College of Education & Health Professions



Grade Distribution by Level of Instruction - College of Education & Health Professions									
All Faculty	A's	B's	C's	D's	F's	WF's	W's	Other	Total
<i>2013-2014</i>									
Lower Division	2,570	857	254	78	75	69	103	84	4,090
Percent	62.8%	21.0%	6.2%	1.9%	1.8%	1.7%	2.5%	2.1%	100.0%
Upper Division	2,946	1,391	430	125	69	19	75	721	5,776
Percent	51.0%	24.1%	7.4%	2.2%	1.2%	0.3%	1.3%	12.5%	100.0%
Graduate	2,018	367	42	6	15	27	63	470	3,008
Percent	67.1%	12.2%	1.4%	0.2%	0.5%	0.9%	2.1%	15.6%	100.0%
Total	7,534	2,615	726	209	159	115	241	1,275	12,874
Percent	58.5%	20.3%	5.6%	1.6%	1.2%	0.9%	1.9%	9.9%	100.0%
<i>2014-2015</i>									
Lower Division	2,560	813	259	69	83	87	93	99	4,063
Percent	63.0%	20.0%	6.4%	1.7%	2.0%	2.1%	2.3%	2.4%	100.0%
Upper Division	2,813	1,465	467	141	78	35	76	546	5,621
Percent	50.0%	26.1%	8.3%	2.5%	1.4%	0.6%	1.4%	9.7%	100.0%
Graduate	2,597	416	88	15	35	47	94	676	3,968
Percent	65.4%	10.5%	2.2%	0.4%	0.9%	1.2%	2.4%	17.0%	100.0%
Total	7,970	2,694	814	225	196	169	263	1,321	13,652
Percent	58.4%	19.7%	6.0%	1.6%	1.4%	1.2%	1.9%	9.7%	100.0%
<i>2014-2016</i>									
Lower Division	2,451	750	224	78	64	58	101	58	3,784
Percent	64.8%	19.8%	5.9%	2.1%	1.7%	1.5%	2.7%	1.5%	100.0%
Upper Division	2,776	1,373	391	133	102	45	86	527	5,433
Percent	51.1%	25.3%	7.2%	2.4%	1.9%	0.8%	1.6%	9.7%	100.0%
Graduate	3,545	528	79	11	64	46	101	815	5,189
Percent	68.3%	10.2%	1.5%	0.2%	1.2%	0.9%	1.9%	15.7%	100.0%
Total	8,772	2,651	694	222	230	149	288	1,400	14,406
Percent	60.9%	18.4%	4.8%	1.5%	1.6%	1.0%	2.0%	9.7%	100.0%
<i>2016-2017</i>									
Lower Division	2,271	673	240	62	71	51	64	75	3,507
Percent	64.8%	19.2%	6.8%	1.8%	2.0%	1.5%	1.8%	2.1%	100.0%
Upper Division	2,803	1,304	444	137	89	36	54	455	5,322
Percent	52.7%	24.5%	8.3%	2.6%	1.7%	0.7%	1.0%	8.5%	100.0%
Graduate	4,095	571	117	25	83	60	87	981	6,019
Percent	68.0%	9.5%	1.9%	0.4%	1.4%	1.0%	1.4%	16.3%	100.0%
Total	9,169	2,548	801	224	243	147	205	1,511	14,848
Percent	61.8%	17.2%	5.4%	1.5%	1.6%	1.0%	1.4%	10.2%	100.0%