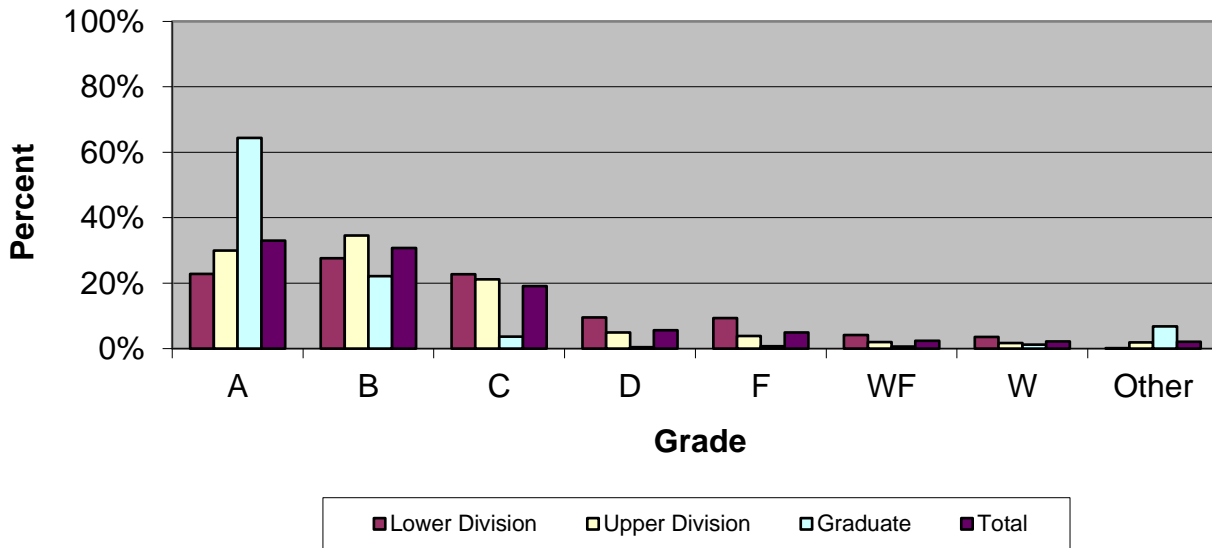


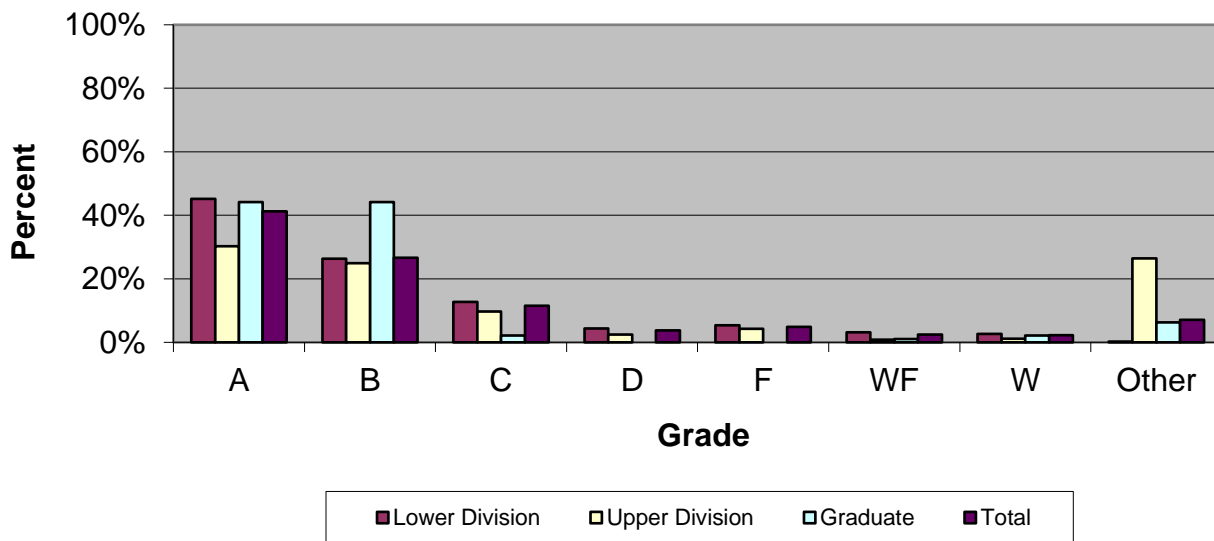
CSU Facts & Figures 2017: Grade Distribution

Grade Distribution of Full-Time Faculty for 2016-17 D. Abbott Turner College of Business



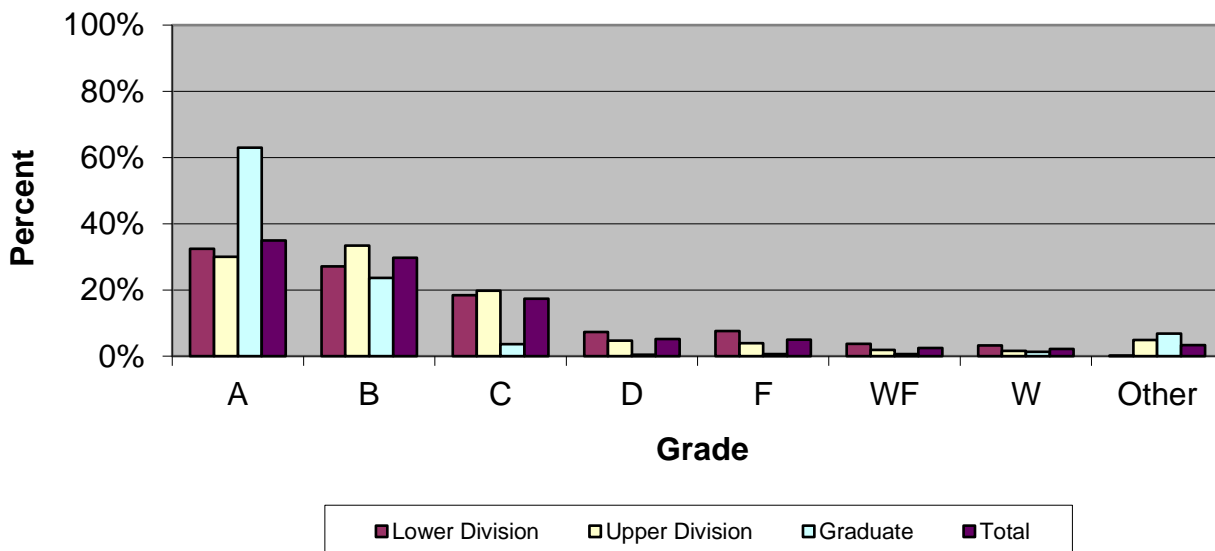
Grade Distribution by Level of Instruction - D. Abbott Turner College of Business									
Full-Time Faculty	A's	B's	C's	D's	F's	WF's	W's	Other	Total
<i>2013-2014</i>									
Lower Division	654	787	771	364	235	198	87	12	3,108
Percent	21.0%	25.3%	24.8%	11.7%	7.6%	6.4%	2.8%	0.4%	100.0%
Upper Division	1,495	1,535	904	259	155	148	106	63	4,665
Percent	32.0%	32.9%	19.4%	5.6%	3.3%	3.2%	2.3%	1.4%	100.0%
Graduate	942	295	52	13	9	37	30	36	1,414
Percent	66.6%	20.9%	3.7%	0.9%	0.6%	2.6%	2.1%	2.5%	100.0%
Total	3,091	2,617	1,727	636	399	383	223	111	9,187
Percent	33.6%	28.5%	18.8%	6.9%	4.3%	4.2%	2.4%	1.2%	100.0%
<i>2014-2015</i>									
Lower Division	635	878	821	329	264	173	93	12	3,205
Percent	19.8%	27.4%	25.6%	10.3%	8.2%	5.4%	2.9%	0.4%	100.0%
Upper Division	1,439	1,455	946	234	223	164	95	63	4,619
Percent	31.2%	31.5%	20.5%	5.1%	4.8%	3.6%	2.1%	1.4%	100.0%
Graduate	926	234	34	10	14	32	20	52	1,322
Percent	70.0%	17.7%	2.6%	0.8%	1.1%	2.4%	1.5%	3.9%	100.0%
Total	3,000	2,567	1,801	573	501	369	208	127	9,146
Percent	32.8%	28.1%	19.7%	6.3%	5.5%	4.0%	2.3%	1.4%	100.0%
<i>2015-2016</i>									
Lower Division	656	847	744	307	258	184	105	9	3,110
Percent	21.1%	27.2%	23.9%	9.9%	8.3%	5.9%	3.4%	0.3%	100.0%
Upper Division	1,359	1,616	1,029	237	204	136	90	71	4,742
Percent	28.7%	34.1%	21.7%	5.0%	4.3%	2.9%	1.9%	1.5%	100.0%
Graduate	846	269	46	9	14	21	32	86	1,323
Percent	63.9%	20.3%	3.5%	0.7%	1.1%	1.6%	2.4%	6.5%	100.0%
Total	2,861	2,732	1,819	553	476	341	227	166	9,175
Percent	31.2%	29.8%	19.8%	6.0%	5.2%	3.7%	2.5%	1.8%	100.0%
<i>2016-2017</i>									
Lower Division	589	712	586	246	240	106	92	4	2,575
Percent	22.9%	27.7%	22.8%	9.6%	9.3%	4.1%	3.6%	0.2%	100.0%
Upper Division	1,510	1,738	1,066	249	192	100	85	95	5,035
Percent	30.0%	34.5%	21.2%	4.9%	3.8%	2.0%	1.7%	1.9%	100.0%
Graduate	839	288	48	6	9	8	16	89	1,303
Percent	64.4%	22.1%	3.7%	0.5%	0.7%	0.6%	1.2%	6.8%	100.0%
Total	2,938	2,738	1,700	501	441	214	193	188	8,913
Percent	33.0%	30.7%	19.1%	5.6%	4.9%	2.4%	2.2%	2.1%	100.0%

Grade Distribution of Part-Time Faculty for 2016-17
D. Abbott Turner College of Business



Grade Distribution by Level of Instruction - D. Abbott Turner College of Business									
Part-Time Faculty	A's	B's	C's	D's	F's	WF's	W's	Other	Total
<i>2013-2014</i>									
Lower Division	310	133	65	23	35	23	13	0	602
Percent	51.5%	22.1%	10.8%	3.8%	5.8%	3.8%	2.2%	0.0%	100.0%
Upper Division	202	118	57	10	9	9	8	173	586
Percent	34.5%	20.1%	9.7%	1.7%	1.5%	1.5%	1.4%	29.5%	100.0%
Graduate	128	38	2	0	1	3	1	7	180
Percent	71.1%	21.1%	1.1%	0.0%	0.6%	1.7%	0.6%	3.9%	100.0%
Total	640	289	124	33	45	35	22	180	1,368
Percent	46.8%	21.1%	9.1%	2.4%	3.3%	2.6%	1.6%	13.2%	100.0%
<i>2014-2015</i>									
Lower Division	306	199	82	48	39	24	22	1	721
Percent	42.4%	27.6%	11.4%	6.7%	5.4%	3.3%	3.1%	0.1%	100.0%
Upper Division	217	131	56	15	6	14	2	150	591
Percent	36.7%	22.2%	9.5%	2.5%	1.0%	2.4%	0.3%	25.4%	100.0%
Graduate	49	7	1	0	0	2	2	1	62
Percent	79.0%	11.3%	1.6%	0.0%	0.0%	3.2%	3.2%	1.6%	100.0%
Total	572	337	139	63	45	40	26	152	1,374
Percent	41.6%	24.5%	10.1%	4.6%	3.3%	2.9%	1.9%	11.1%	100.0%
<i>2015-2016</i>									
Lower Division	496	298	166	68	60	48	38	7	1,181
Percent	42.0%	25.2%	14.1%	5.8%	5.1%	4.1%	3.2%	0.6%	100.0%
Upper Division	292	177	64	18	18	23	6	174	772
Percent	37.8%	22.9%	8.3%	2.3%	2.3%	3.0%	0.8%	22.5%	100.0%
Graduate	34	1	0	0	0	0	0	0	35
Percent	97.1%	2.9%	0.0%	0.0%	0.0%	0.0%	0.0%	0.0%	100.0%
Total	822	476	230	86	78	71	44	181	1,988
Percent	41.3%	23.9%	11.6%	4.3%	3.9%	3.6%	2.2%	9.1%	100.0%
<i>2016-2017</i>									
Lower Division	875	511	246	85	104	61	52	4	1,938
Percent	45.1%	26.4%	12.7%	4.4%	5.4%	3.1%	2.7%	0.2%	100.0%
Upper Division	212	175	68	17	30	6	8	185	701
Percent	30.2%	25.0%	9.7%	2.4%	4.3%	0.9%	1.1%	26.4%	100.0%
Graduate	42	42	2	0	0	1	2	6	95
Percent	44.2%	44.2%	2.1%	0.0%	0.0%	1.1%	2.1%	6.3%	100.0%
Total	1,129	728	316	102	134	68	62	195	2,734
Percent	41.3%	26.6%	11.6%	3.7%	4.9%	2.5%	2.3%	7.1%	100.0%

Grade Distribution of All Faculty for 2016-17
Turner College of Business & Computer Science



Grade Distribution by Level of Instruction - D. Abbott Turner College of Business									
All Faculty	A's	B's	C's	D's	F's	WF's	W's	Other	Total
<i>2013-2014</i>									
Lower Division	964	920	836	387	270	221	100	12	3,710
Percent	26.0%	24.8%	22.5%	10.4%	7.3%	6.0%	2.7%	0.3%	100.0%
Upper Division	1,697	1,653	961	269	164	157	114	236	5,251
Percent	32.3%	31.5%	18.3%	5.1%	3.1%	3.0%	2.2%	4.5%	100.0%
Graduate	1,070	333	54	13	10	40	31	43	1,594
Percent	67.1%	20.9%	3.4%	0.8%	0.6%	2.5%	1.9%	2.7%	100.0%
Total	3,731	2,906	1,851	669	444	418	245	291	10,555
Percent	35.3%	27.5%	17.5%	6.3%	4.2%	4.0%	2.3%	2.8%	100.0%
<i>2014-2015</i>									
Lower Division	941	1,077	903	377	303	197	115	13	3,926
Percent	24.0%	27.4%	23.0%	9.6%	7.7%	5.0%	2.9%	0.3%	100.0%
Upper Division	1,656	1,586	1,002	249	229	178	97	213	5,210
Percent	31.8%	30.4%	19.2%	4.8%	4.4%	3.4%	1.9%	4.1%	100.0%
Graduate	975	241	35	10	14	34	22	53	1,384
Percent	70.4%	17.4%	2.5%	0.7%	1.0%	2.5%	1.6%	3.8%	100.0%
Total	3,572	2,904	1,940	636	546	409	234	279	10,520
Percent	34.0%	27.6%	18.4%	6.0%	5.2%	3.9%	2.2%	2.7%	100.0%
<i>2015-2016</i>									
Lower Division	1,152	1,145	910	375	318	232	143	16	4,291
Percent	26.8%	26.7%	21.2%	8.7%	7.4%	5.4%	3.3%	0.4%	100.0%
Upper Division	1,651	1,793	1,093	255	222	159	96	245	5,514
Percent	29.9%	32.5%	19.8%	4.6%	4.0%	2.9%	1.7%	4.4%	100.0%
Graduate	880	270	46	9	14	21	32	86	1,358
Percent	64.8%	19.9%	3.4%	0.7%	1.0%	1.5%	2.4%	6.3%	100.0%
Total	3,683	3,208	2,049	639	554	412	271	347	11,163
Percent	33.0%	28.7%	18.4%	5.7%	5.0%	3.7%	2.4%	3.1%	100.0%
<i>2016-2017</i>									
Lower Division	1,464	1,223	832	331	344	167	144	8	4,513
Percent	32.4%	27.1%	18.4%	7.3%	7.6%	3.7%	3.2%	0.2%	100.0%
Upper Division	1,722	1,913	1,134	266	222	106	93	280	5,736
Percent	30.0%	33.4%	19.8%	4.6%	3.9%	1.8%	1.6%	4.9%	100.0%
Graduate	881	330	50	6	9	9	18	95	1,398
Percent	63.0%	23.6%	3.6%	0.4%	0.6%	0.6%	1.3%	6.8%	100.0%
Total	4,067	3,466	2,016	603	575	282	255	383	11,647
Percent	34.9%	29.8%	17.3%	5.2%	4.9%	2.4%	2.2%	3.3%	100.0%