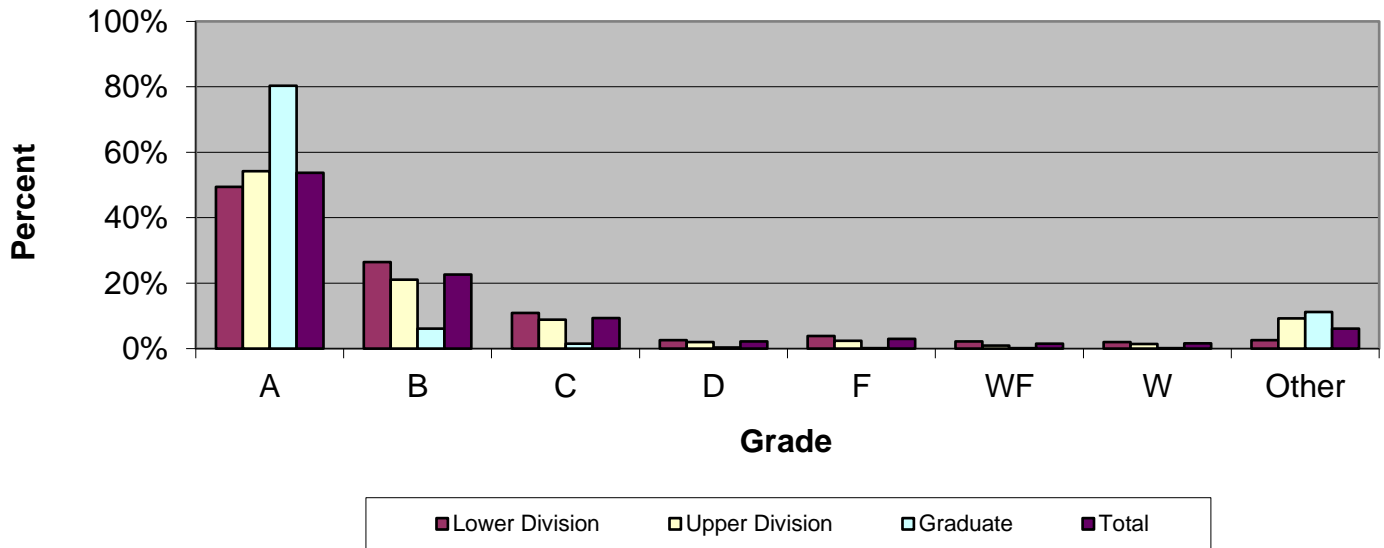


CSU Facts & Figures 2017: Grade Distribution

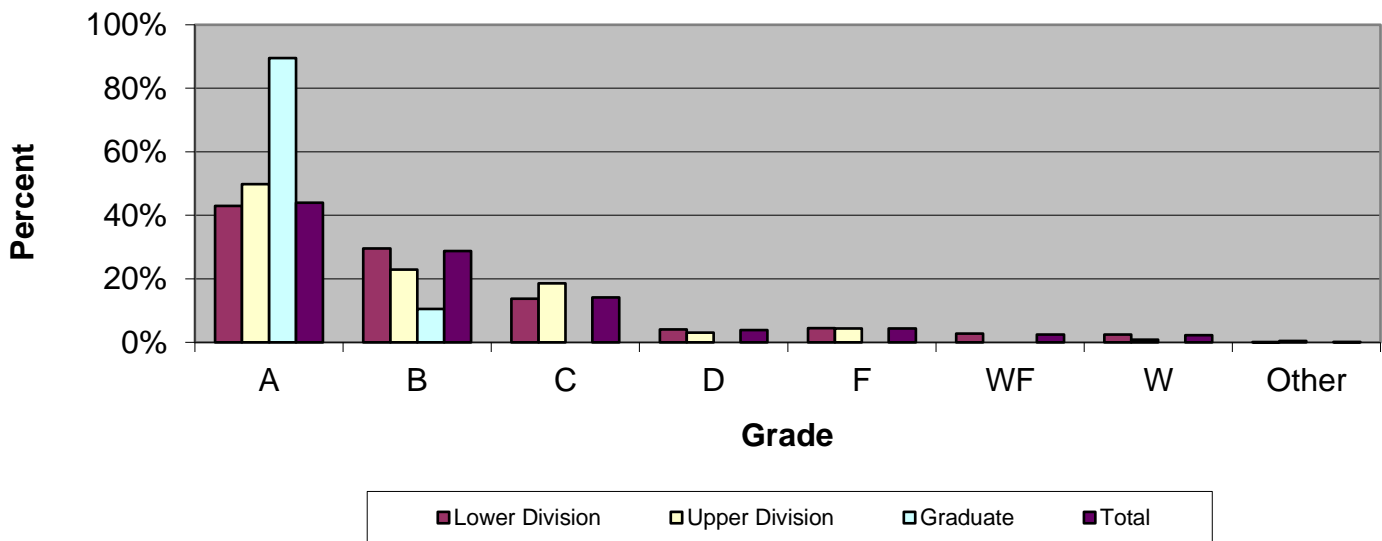
Grade Distribution of Full-Time Faculty for 2016-17 College of the Arts



Grade Distribution by Level of Instruction - College of the Arts

Full-Time Faculty	A's	B's	C's	D's	F's	WF's	W's	Other	Total
<i>2013-2014</i>									
Lower Division	1,895	995	488	135	189	121	79	88	3,990
Percent	47.5%	24.9%	12.2%	3.4%	4.7%	3.0%	2.0%	2.2%	100.0%
Upper Division	1,418	619	268	55	53	28	27	252	2,720
Percent	52.1%	22.8%	9.9%	2.0%	1.9%	1.0%	1.0%	9.3%	100.0%
Graduate	331	40	4	0	0	0	2	59	436
Percent	75.9%	9.2%	0.9%	0.0%	0.0%	0.0%	0.5%	13.5%	100.0%
Total	3,644	1,654	760	190	242	149	108	399	7,146
Percent	51.0%	23.1%	10.6%	2.7%	3.4%	2.1%	1.5%	5.6%	100.0%
<i>2014-2015</i>									
Lower Division	1,599	906	396	111	203	125	83	81	3,504
Percent	45.6%	25.9%	11.3%	3.2%	5.8%	3.6%	2.4%	2.3%	100.0%
Upper Division	1,699	531	208	64	54	46	58	279	2,939
Percent	57.8%	18.1%	7.1%	2.2%	1.8%	1.6%	2.0%	9.5%	100.0%
Graduate	339	34	5	0	0	0	8	58	444
Percent	76.4%	7.7%	1.1%	0.0%	0.0%	0.0%	1.8%	13.1%	100.0%
Total	3,637	1,471	609	175	257	171	149	418	6,887
Percent	52.8%	21.4%	8.8%	2.5%	3.7%	2.5%	2.2%	6.1%	100.0%
<i>2015-2016</i>									
Lower Division	1,507	946	388	98	166	74	96	109	3,384
Percent	44.5%	28.0%	11.5%	2.9%	4.9%	2.2%	2.8%	3.2%	100.0%
Upper Division	1,623	629	263	50	56	13	44	260	2,938
Percent	55.2%	21.4%	9.0%	1.7%	1.9%	0.4%	1.5%	8.8%	100.0%
Graduate	313	43	6	0	4	2	3	61	432
Percent	72.5%	10.0%	1.4%	0.0%	0.9%	0.5%	0.7%	14.1%	100.0%
Total	3,443	1,618	657	148	226	89	143	430	6,754
Percent	51.0%	24.0%	9.7%	2.2%	3.3%	1.3%	2.1%	6.4%	100.0%
<i>2016-2017</i>									
Lower Division	1,766	947	389	94	139	78	72	91	3,576
Percent	49.4%	26.5%	10.9%	2.6%	3.9%	2.2%	2.0%	2.5%	100.0%
Upper Division	1,718	668	282	62	76	29	44	292	3,171
Percent	54.2%	21.1%	8.9%	2.0%	2.4%	0.9%	1.4%	9.2%	100.0%
Graduate	437	33	8	2	1	1	1	61	544
Percent	80.3%	6.1%	1.5%	0.4%	0.2%	0.2%	0.2%	11.2%	100.0%
Total	3,921	1,648	679	158	216	108	117	444	7,291
Percent	53.8%	22.6%	9.3%	2.2%	3.0%	1.5%	1.6%	6.1%	100.0%

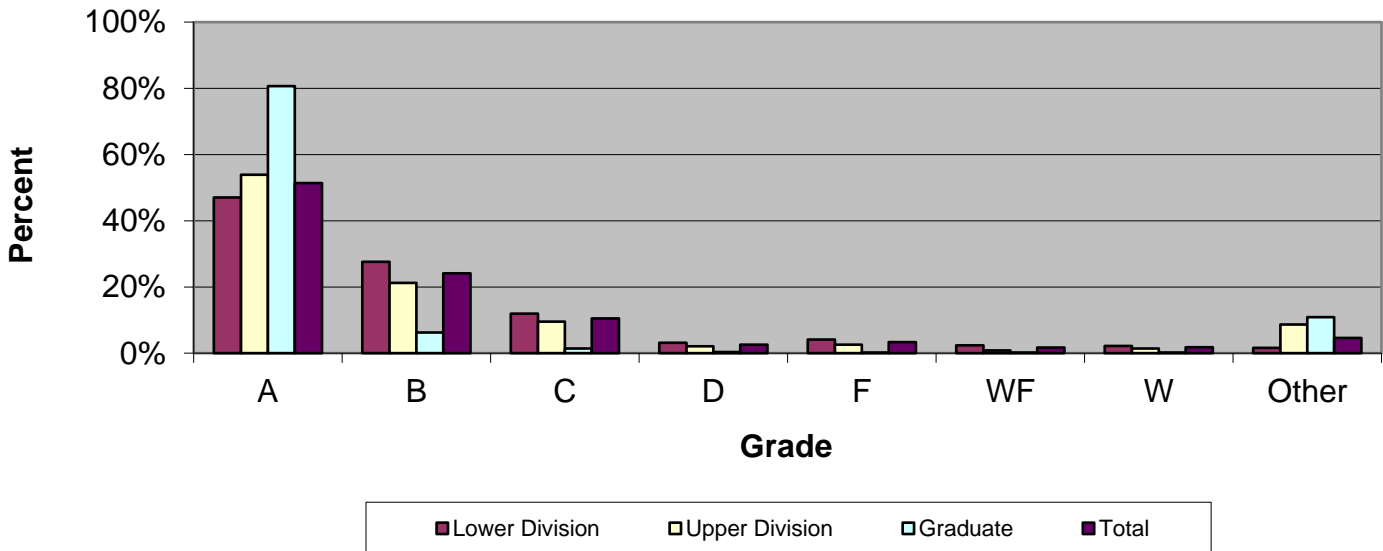
Grade Distribution of Part-Time Faculty for 2016-17
College of the Arts



Grade Distribution by Level of Instruction - College of the Arts

Part-Time Faculty	A's	B's	C's	D's	F's	WF's	W's	Other	Total
<i>2013-2014</i>									
Lower Division	974	560	259	96	78	78	48	8	2,101
Percent	46.4%	26.7%	12.3%	4.6%	3.7%	3.7%	2.3%	0.4%	100.0%
Upper Division	97	72	15	3	3	1	2	8	201
Percent	48.3%	35.8%	7.5%	1.5%	1.5%	0.5%	1.0%	4.0%	100.0%
Graduate	3	0	0	0	0	0	0	0	3
Percent	100.0%	0.0%	0.0%	0.0%	0.0%	0.0%	0.0%	0.0%	100.0%
Total	1,074	632	274	99	81	79	50	16	2,305
Percent	46.6%	27.4%	11.9%	4.3%	3.5%	3.4%	2.2%	0.7%	100.0%
<i>2014-2015</i>									
Lower Division	1,002	797	348	131	141	95	67	9	2,590
Percent	38.7%	30.8%	13.4%	5.1%	5.4%	3.7%	2.6%	0.3%	100.0%
Upper Division	252	142	51	7	16	6	9	3	486
Percent	51.9%	29.2%	10.5%	1.4%	3.3%	1.2%	1.9%	0.6%	100.0%
Graduate	14	0	0	0	0	0	1	0	15
Percent	93.3%	0.0%	0.0%	0.0%	0.0%	0.0%	6.7%	0.0%	100.0%
Total	1,268	939	399	138	157	101	77	12	3,091
Percent	41.0%	30.4%	12.9%	4.5%	5.1%	3.3%	2.5%	0.4%	100.0%
<i>2015-2016</i>									
Lower Division	1,134	747	322	119	166	61	58	7	2,614
Percent	43.4%	28.6%	12.3%	4.6%	6.4%	2.3%	2.2%	0.3%	100.0%
Upper Division	287	143	54	16	14	8	9	0	531
Percent	54.0%	26.9%	10.2%	3.0%	2.6%	1.5%	1.7%	0.0%	100.0%
Graduate	30	6	0	0	0	0	0	0	36
Percent	83.3%	16.7%	0.0%	0.0%	0.0%	0.0%	0.0%	0.0%	100.0%
Total	1,451	896	376	135	180	69	67	7	3,181
Percent	45.6%	28.2%	11.8%	4.2%	5.7%	2.2%	2.1%	0.2%	100.0%
<i>2016-2017</i>									
Lower Division	906	624	291	85	94	58	51	2	2,111
Percent	42.9%	29.6%	13.8%	4.0%	4.5%	2.7%	2.4%	0.1%	100.0%
Upper Division	115	53	43	7	10	0	2	1	231
Percent	49.8%	22.9%	18.6%	3.0%	4.3%	0.0%	0.9%	0.4%	100.0%
Graduate	17	2	0	0	0	0	0	0	19
Percent	89.5%	10.5%	0.0%	0.0%	0.0%	0.0%	0.0%	0.0%	100.0%
Total	1,038	679	334	92	104	58	53	3	2,361
Percent	44.0%	28.8%	14.1%	3.9%	4.4%	2.5%	2.2%	0.1%	100.0%

Grade Distribution of All Faculty for 2016-17
College of the Arts



Grade Distribution by Level of Instruction - College of the Arts

All Faculty	A's	B's	C's	D's	F's	WF's	W's	Other	Total
<i>2013-2014</i>									
Lower Division	2,869	1,555	747	231	267	199	127	96	6,091
Percent	47.1%	25.5%	12.3%	3.8%	4.4%	3.3%	2.1%	1.6%	100.0%
Upper Division	1,515	691	283	58	56	29	29	260	2,921
Percent	51.9%	23.7%	9.7%	2.0%	1.9%	1.0%	1.0%	8.9%	100.0%
Graduate	334	40	4	0	0	0	2	59	439
Percent	76.1%	9.1%	0.9%	0.0%	0.0%	0.0%	0.5%	13.4%	100.0%
Total	4,718	2,286	1,034	289	323	228	158	415	9,451
Percent	49.9%	24.2%	10.9%	3.1%	3.4%	2.4%	1.7%	4.4%	100.0%
<i>2014-2015</i>									
Lower Division	2,601	1,703	744	242	344	220	150	90	6,094
Percent	42.7%	27.9%	12.2%	4.0%	5.6%	3.6%	2.5%	1.5%	100.0%
Upper Division	1,951	673	259	71	70	52	67	282	3,425
Percent	57.0%	19.6%	7.6%	2.1%	2.0%	1.5%	2.0%	8.2%	100.0%
Graduate	353	34	5	0	0	0	9	58	459
Percent	76.9%	7.4%	1.1%	0.0%	0.0%	0.0%	2.0%	12.6%	100.0%
Total	4,905	2,410	1,008	313	414	272	226	430	9,978
Percent	49.2%	24.2%	10.1%	3.1%	4.1%	2.7%	2.3%	4.3%	100.0%
<i>2015-2016</i>									
Lower Division	2,641	1,693	710	217	332	135	154	116	5,998
Percent	44.0%	28.2%	11.8%	3.6%	5.5%	2.3%	2.6%	1.9%	100.0%
Upper Division	1,910	772	317	66	70	21	53	260	3,469
Percent	55.1%	22.3%	9.1%	1.9%	2.0%	0.6%	1.5%	7.5%	100.0%
Graduate	343	49	6	0	4	2	3	61	468
Percent	73.3%	10.5%	1.3%	0.0%	0.9%	0.4%	0.6%	13.0%	100.0%
Total	4,894	2,514	1,033	283	406	158	210	437	9,935
Percent	49.3%	25.3%	10.4%	2.8%	4.1%	1.6%	2.1%	4.4%	100.0%
<i>2016-2017</i>									
Lower Division	2,672	1,571	680	179	233	136	123	93	5,687
Percent	47.0%	27.6%	12.0%	3.1%	4.1%	2.4%	2.2%	1.6%	100.0%
Upper Division	1,833	721	325	69	86	29	46	293	3,402
Percent	53.9%	21.2%	9.6%	2.0%	2.5%	0.9%	1.4%	8.6%	100.0%
Graduate	454	35	8	2	1	1	1	61	563
Percent	80.6%	6.2%	1.4%	0.4%	0.2%	0.2%	0.2%	10.8%	100.0%
Total	4,959	2,327	1,013	250	320	166	170	447	9,652
Percent	51.4%	24.1%	10.5%	2.6%	3.3%	1.7%	1.8%	4.6%	100.0%