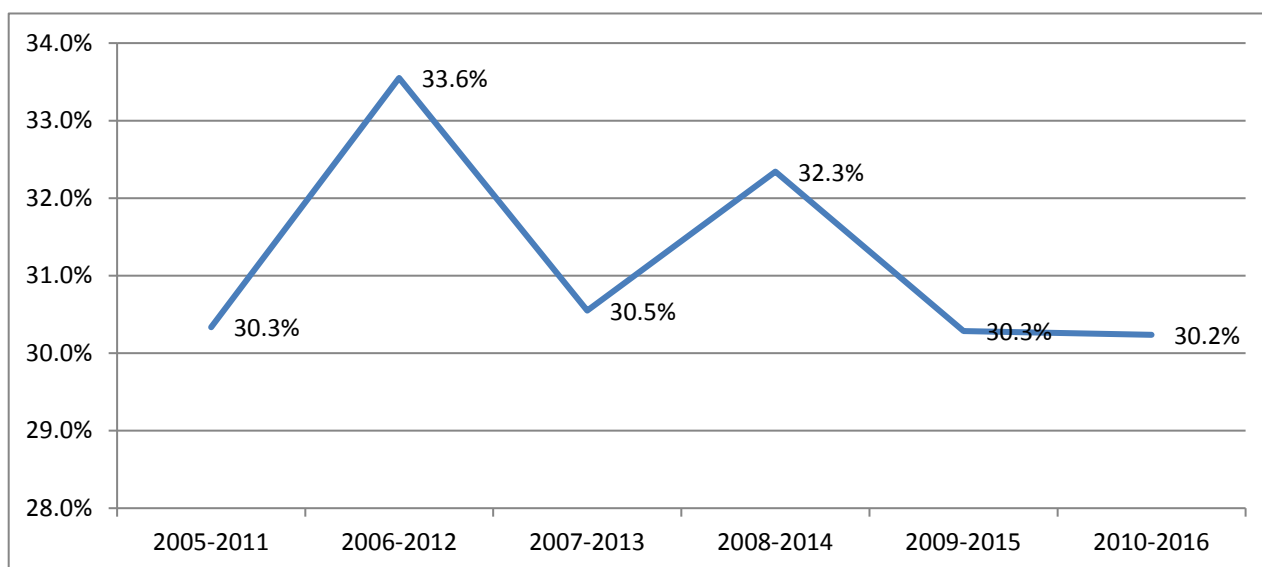


## CSU Facts & Figures 2016: Graduation Rates



### CSU Bachelor's Degree Six-Year Graduation Rate Trends:

**Note:** Graduation rates are for first-time full-time undergraduate student cohorts enrolled fall semester who entered CSU in a baccalaureate degree program in the fall or the preceding summer term.

Disaggregated Category	2005-2011	2006-2012	2007-2013	2008-2014	2009-2015	2010-2016
<b>Total Cohort</b>	<b>30.3%</b>	<b>33.6%</b>	<b>30.5%</b>	<b>32.3%</b>	<b>30.3%</b>	<b>30.2%</b>
<b>Female</b>						
African-American	28.7%	25.9%	28.0%	29.4%	26.6%	28.7%
White	38.0%	43.4%	40.3%	36.3%	38.7%	36.0%
Other	29.9%	47.6%	30.3%	42.2%	37.5%	33.9%
<i>Sub-Total</i>	<b>34.1%</b>	<b>37.3%</b>	<b>35.2%</b>	<b>31.3%</b>	<b>33.7%</b>	<b>32.6%</b>
<b>Male</b>						
African-American	16.3%	17.6%	19.4%	23.4%	20.8%	15.6%
White	27.6%	31.5%	26.3%	31.9%	28.1%	30.8%
Other	22.0%	30.6%	23.8%	31.0%	18.4%	29.1%
<i>Sub-Total</i>	<b>24.3%</b>	<b>27.8%</b>	<b>24.3%</b>	<b>29.5%</b>	<b>25.1%</b>	<b>26.3%</b>
<b>Combined</b>						
African-American	24.8%	23.4%	24.8%	27.3%	24.7%	24.9%
White	33.7%	38.2%	33.9%	34.3%	34.1%	33.8%
Other	26.5%	40.2%	27.8%	36.3%	28.2%	31.6%
<i>Total</i>	<b>30.3%</b>	<b>33.6%</b>	<b>30.5%</b>	<b>32.3%</b>	<b>30.3%</b>	<b>30.2%</b>
<b>Non-Learning Support</b>	<b>34.2%</b>	<b>39.5%</b>	<b>35.2%</b>	<b>37.7%</b>	<b>36.5%</b>	<b>34.5%</b>
<b>Learning Support</b>	<b>9.0%</b>	<b>11.4%</b>	<b>12.7%</b>	<b>12.0%</b>	<b>9.3%</b>	<b>13.1%</b>
<i>Total</i>	<b>30.3%</b>	<b>33.6%</b>	<b>30.5%</b>	<b>32.3%</b>	<b>30.3%</b>	<b>30.2%</b>
<b>Traditional</b>	<b>31.6%</b>	<b>34.5%</b>	<b>31.3%</b>	<b>33.6%</b>	<b>31.0%</b>	<b>30.9%</b>
<b>Non-Traditional</b>	<b>4.2%</b>	<b>11.6%</b>	<b>10.8%</b>	<b>7.3%</b>	<b>14.5%</b>	<b>17.2%</b>
<i>Total</i>	<b>30.3%</b>	<b>33.6%</b>	<b>30.5%</b>	<b>32.3%</b>	<b>30.3%</b>	<b>30.2%</b>