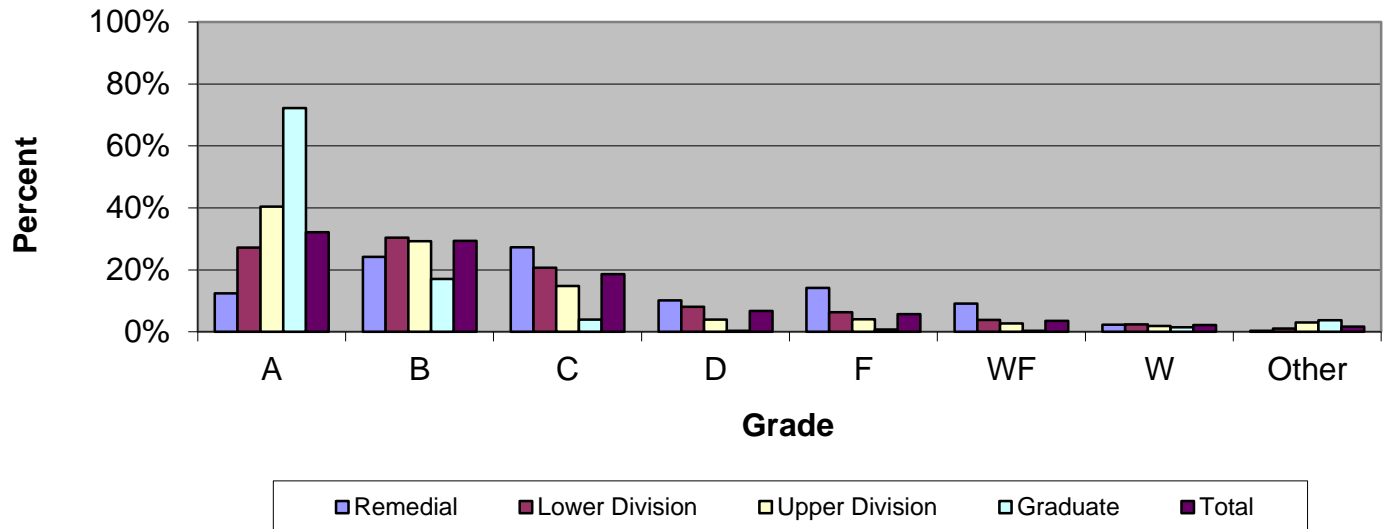


CSU Facts & Figures 2015: Grade Distribution

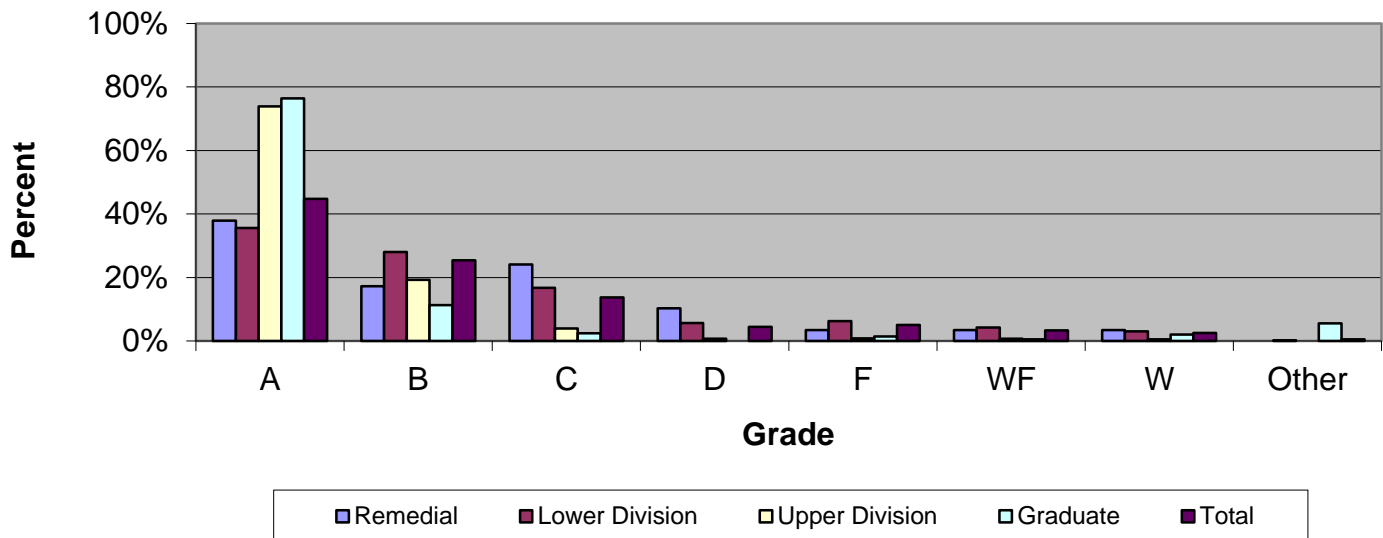
Grade Distribution of Full-Time Faculty for 2014-15 College of Letters & Sciences



Grade Distribution by Level of Instruction - College of Letters & Sciences									
Full-Time Faculty	A's	B's	C's	D's	F's	WF's	W's	Other	Total
<i>2011-2012</i>									
Remedial	0	0	0	0	0	0	0	0	0
Percent									0.0%
Lower Division	4,720	4,904	3,835	1,827	1,800	938	679	213	18,916
Percent	25.0%	25.9%	20.3%	9.7%	9.5%	5.0%	3.6%	1.1%	100.0%
Upper Division	1,971	1,625	995	269	262	175	156	187	5,640
Percent	34.9%	28.8%	17.6%	4.8%	4.6%	3.1%	2.8%	3.3%	100.0%
Graduate	385	169	36	8	20	24	26	23	691
Percent	55.7%	24.5%	5.2%	1.2%	2.9%	3.5%	3.8%	3.3%	100.0%
<i>Total</i>	7,076	6,698	4,866	2,104	2,082	1,137	861	423	25,247
Percent	28.0%	26.5%	19.3%	8.3%	8.2%	4.5%	3.4%	1.7%	100.0%
<i>2012-2013</i>									
Remedial	0	0	0	0	0	0	0	0	0
Percent									
Lower Division	4,721	4,814	3,430	1,455	1,304	776	522	210	17,232
Percent	27.4%	27.9%	19.9%	8.4%	7.6%	4.5%	3.0%	1.2%	100.0%
Upper Division	2,322	1,809	983	216	204	161	130	181	6,006
Percent	38.7%	30.1%	16.4%	3.6%	3.4%	2.7%	2.2%	3.0%	100.0%
Graduate	433	203	39	9	33	9	49	40	815
Percent	53.1%	24.9%	4.8%	1.1%	4.0%	1.1%	6.0%	4.9%	100.0%
<i>Total</i>	7,476	6,826	4,452	1,680	1,541	946	701	431	24,053
Percent	31.1%	28.4%	18.5%	7.0%	6.4%	3.9%	2.9%	1.8%	100.0%
<i>2013-2014</i>									
Remedial	126	203	171	92	90	48	16	18	764
Percent	16.5%	26.6%	22.4%	12.0%	11.8%	6.3%	2.1%	2.4%	
Lower Division	4,668	4,761	3,397	1,480	1,154	652	473	160	16,745
Percent	27.9%	28.4%	20.3%	8.8%	6.9%	3.9%	2.8%	1.0%	100.0%
Upper Division	2,300	1,652	888	252	220	164	130	176	5,782
Percent	39.8%	28.6%	15.4%	4.4%	3.8%	2.8%	2.2%	3.0%	100.0%
Graduate	680	140	22	5	6	7	16	64	940
Percent	72.3%	14.9%	2.3%	0.5%	0.6%	0.7%	1.7%	6.8%	100.0%
<i>Total</i>	7,774	6,756	4,478	1,829	1,470	871	635	418	24,231
Percent	32.1%	27.9%	18.5%	7.5%	6.1%	3.6%	2.6%	1.7%	100.0%
<i>2014-2015</i>									
Remedial	71	138	156	58	81	52	13	2	571
Percent	12.4%	24.2%	27.3%	10.2%	14.2%	9.1%	2.3%	0.4%	100.0%
Lower Division	4,508	5,050	3,439	1,350	1,059	631	394	173	16,604
Percent	27.2%	30.4%	20.7%	8.1%	6.4%	3.8%	2.4%	1.0%	100.0%
Upper Division	2,439	1,766	891	239	245	167	112	182	6,041
Percent	40.4%	29.2%	14.7%	4.0%	4.1%	2.8%	1.9%	3.0%	100.0%
Graduate	808	191	44	4	9	4	17	42	1,119
Percent	72.2%	17.1%	3.9%	0.4%	0.8%	0.4%	1.5%	3.8%	100.0%
<i>Total</i>	7,826	7,145	4,530	1,651	1,394	854	536	399	24,335

Percent	32.2%	29.4%	18.6%	6.8%	5.7%	3.5%	2.2%	1.6%	100.0%
---------	-------	-------	-------	------	------	------	------	------	--------

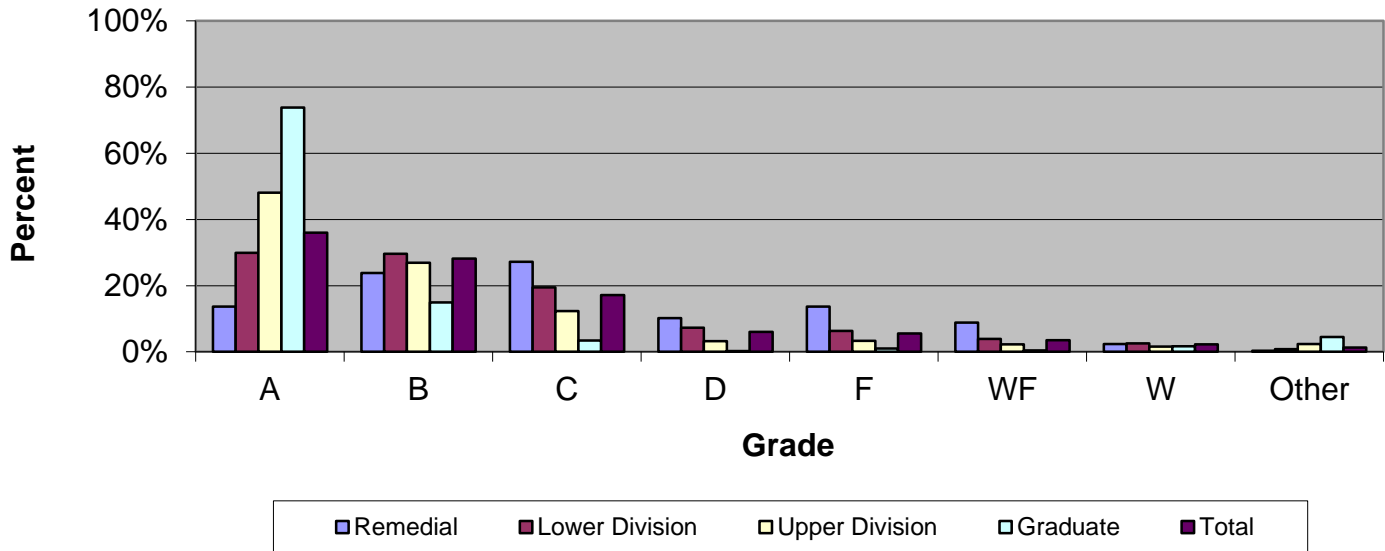
Grade Distribution of Part-Time Faculty for 2014-15 College of Letters & Sciences



Grade Distribution by Level of Instruction - College of Letters & Sciences									
Part-Time Faculty	A's	B's	C's	D's	F's	WF's	W's	Other	Total
<i>2011-2012</i>									
Remedial	0	0	0	0	0	0	0	0	0
Percent									0.0%
Lower Division	2,207	1,826	1,101	515	513	331	214	33	6,740
Percent	32.7%	27.1%	16.3%	7.6%	7.6%	4.9%	3.2%	0.5%	100.0%
Upper Division	1,950	584	218	44	32	33	35	3	2,899
Percent	67.3%	20.1%	7.5%	1.5%	1.1%	1.1%	1.2%	0.1%	100.0%
Graduate	1,111	164	23	1	2	6	22	2	1,331
Percent	83.5%	12.3%	1.7%	0.1%	0.2%	0.5%	1.7%	0.2%	100.0%
Total	5,268	2,574	1,342	560	547	370	271	38	10,970
Percent	48.0%	23.5%	12.2%	5.1%	5.0%	3.4%	2.5%	0.3%	100.0%
<i>2012-2013</i>									
Remedial	3	3	0	0	0	1	0	0	7
Percent	42.9%	42.9%	0.0%	0.0%	0.0%	14.3%	0.0%	0.0%	
Lower Division	2,410	2,281	1,289	434	503	387	243	27	7,574
Percent	31.8%	30.1%	17.0%	5.7%	6.6%	5.1%	3.2%	0.4%	100.0%
Upper Division	1,520	482	151	21	13	23	28	2	2,240
Percent	67.9%	21.5%	6.7%	0.9%	0.6%	1.0%	1.3%	0.1%	100.0%
Graduate	902	155	18	0	3	5	12	4	1,099
Percent	82.1%	14.1%	1.6%	0.0%	0.3%	0.5%	1.1%	0.4%	100.0%
Total	4,835	2,921	1,458	455	519	416	283	33	10,920
Percent	44.3%	26.7%	13.4%	4.2%	4.8%	3.8%	2.6%	0.3%	100.0%
<i>2013-2014</i>									
Remedial	11	21	25	6	20	14	8	0	105
Percent	10.5%	20.0%	23.8%	5.7%	19.0%	13.3%	7.6%	0.0%	100.0%
Lower Division	2,892	2,313	1,420	485	473	370	227	26	8,206
Percent	35.2%	28.2%	17.3%	5.9%	5.8%	4.5%	2.8%	0.3%	100.0%
Upper Division	1,407	382	126	23	10	23	13	2	1,986
Percent	70.8%	19.2%	6.3%	1.2%	0.5%	1.2%	0.7%	0.1%	100.0%
Graduate	575	128	12	1	6	18	13	48	801
Percent	71.8%	16.0%	1.5%	0.1%	0.7%	2.2%	1.6%	6.0%	100.0%
Total	4,885	2,844	1,583	515	509	425	261	76	11,098
Percent	44.0%	25.6%	14.3%	4.6%	4.6%	3.8%	2.4%	0.7%	100.0%
<i>2014-2015</i>									
Remedial	11	5	7	3	1	1	1	0	29
Percent	37.9%	17.2%	24.1%	10.3%	3.4%	3.4%	3.4%	0.0%	100.0%
Lower Division	2,873	2,260	1,355	457	507	342	245	21	8,060
Percent	35.6%	28.0%	16.8%	5.7%	6.3%	4.2%	3.0%	0.3%	100.0%
Upper Division	1,325	346	72	13	15	13	9	0	1,793
Percent	73.9%	19.3%	4.0%	0.7%	0.8%	0.7%	0.5%	0.0%	100.0%
Graduate	520	77	17	0	10	4	14	38	680
Percent	76.5%	11.3%	2.5%	0.0%	1.5%	0.6%	2.1%	5.6%	100.0%
Total	4,729	2,688	1,451	473	533	360	269	59	10,562

Percent	44.8%	25.4%	13.7%	4.5%	5.0%	3.4%	2.5%	0.6%	100.0%
---------	-------	-------	-------	------	------	------	------	------	--------

**Grade Distribution of All Faculty for 2014-15
College of Letters & Sciences**



Grade Distribution by Level of Instruction - College of Letters & Sciences

All Faculty	A's	B's	C's	D's	F's	WF's	W's	Other	Total
<i>2011-2012</i>									
Remedial	0	0	0	0	0	0	0	0	0
Percent	#DIV/0!	#DIV/0!	#DIV/0!	#DIV/0!	#DIV/0!	#DIV/0!	#DIV/0!	#DIV/0!	#DIV/0!
Lower Division	6,927	6,730	4,936	2,342	2,313	1,269	893	246	25,656
Percent	27.0%	26.2%	19.2%	9.1%	9.0%	4.9%	3.5%	1.0%	100.0%
Upper Division	3,921	2,209	1,213	313	294	208	191	190	8,539
Percent	45.9%	25.9%	14.2%	3.7%	3.4%	2.4%	2.2%	2.2%	100.0%
Graduate	1,496	333	59	9	22	30	48	25	2,022
Percent	74.0%	16.5%	2.9%	0.4%	1.1%	1.5%	2.4%	1.2%	100.0%
Total	12,344	9,272	6,208	2,664	2,629	1,507	1,132	461	36,217
Percent	34.1%	25.6%	17.1%	7.4%	7.3%	4.2%	3.1%	1.3%	100.0%
<i>2012-2013</i>									
Remedial	3	3	0	0	0	1	0	0	7
Percent									
Lower Division	7,131	7,095	4,719	1,889	1,807	1,163	765	237	24,806
Percent	28.7%	28.6%	19.0%	7.6%	7.3%	4.7%	3.1%	1.0%	100.0%
Upper Division	3,842	2,291	1,134	237	217	184	158	183	8,246
Percent	46.6%	27.8%	13.8%	2.9%	2.6%	2.2%	1.9%	2.2%	100.0%
Graduate	1,335	358	57	9	36	14	61	44	1,914
Percent	69.7%	18.7%	3.0%	0.5%	1.9%	0.7%	3.2%	2.3%	100.0%
Total	12,311	9,747	5,910	2,135	2,060	1,362	984	464	34,973
Percent	35.2%	27.9%	16.9%	6.1%	5.9%	3.9%	2.8%	1.3%	100.0%
<i>2013-2014</i>									
Remedial	137	224	196	98	110	62	24	18	869
Percent	15.8%	25.8%	22.6%	11.3%	12.7%	7.1%	2.8%	2.1%	100.0%
Lower Division	7,560	7,074	4,817	1,965	1,627	1,022	700	186	24,951
Percent	30.3%	28.4%	19.3%	7.9%	6.5%	4.1%	2.8%	0.7%	100.0%
Upper Division	3,707	2,034	1,014	275	230	187	143	178	7,768
Percent	47.7%	26.2%	13.1%	3.5%	3.0%	2.4%	1.8%	2.3%	100.0%
Graduate	1,255	268	34	6	12	25	29	112	1,741
Percent	72.1%	15.4%	2.0%	0.3%	0.7%	1.4%	1.7%	6.4%	100.0%
Total	12,659	9,600	6,061	2,344	1,979	1,296	896	494	35,329
Percent	35.8%	27.2%	17.2%	6.6%	5.6%	3.7%	2.5%	1.4%	100.0%
<i>2014-2015</i>									
Remedial	82	143	163	61	82	53	14	2	600
Percent	13.7%	23.8%	27.2%	10.2%	13.7%	8.8%	2.3%	0.3%	100.0%
Lower Division	7,381	7,310	4,794	1,807	1,566	973	639	194	24,664
Percent	29.9%	29.6%	19.4%	7.3%	6.3%	3.9%	2.6%	0.8%	100.0%
Upper Division	3,764	2,112	963	252	260	180	121	182	7,834
Percent	48.0%	27.0%	12.3%	3.2%	3.3%	2.3%	1.5%	2.3%	100.0%
Graduate	1,329	268	61	4	19	8	31	80	1,800
Percent	73.8%	14.9%	3.4%	0.2%	1.1%	0.4%	1.7%	4.4%	100.0%
Total	12,556	9,833	5,981	2,124	1,927	1,214	805	458	34,898

Percent	36.0%	28.2%	17.1%	6.1%	5.5%	3.5%	2.3%	1.3%	100.0%
----------------	--------------	--------------	--------------	-------------	-------------	-------------	-------------	-------------	---------------