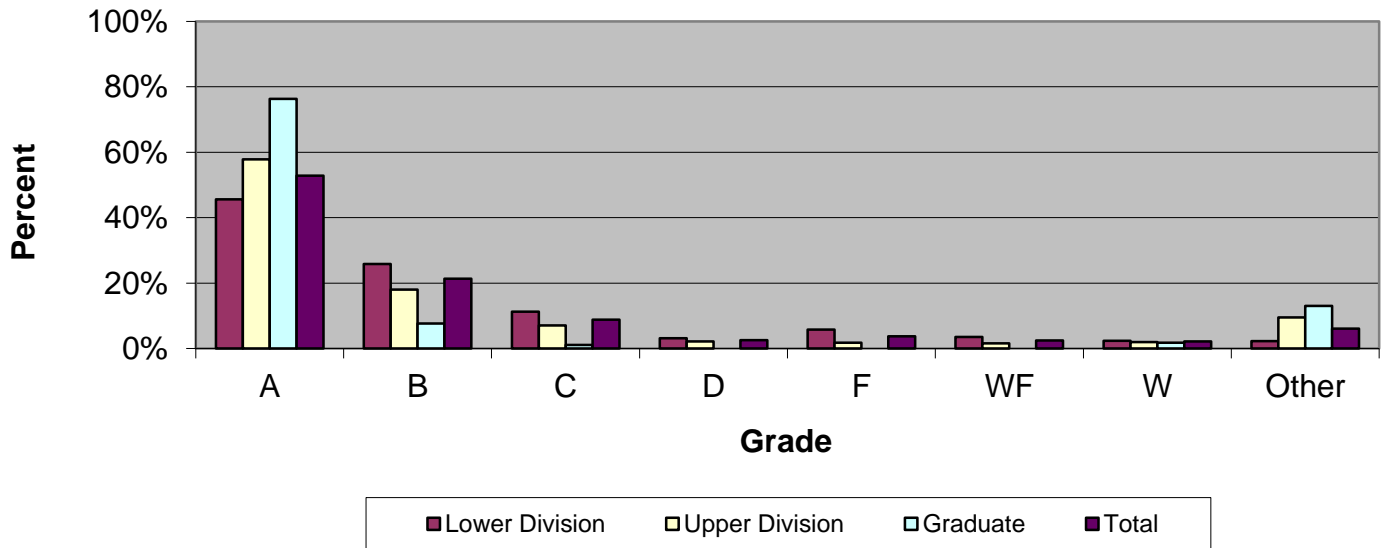


# CSU Facts & Figures 2015: Grade Distribution

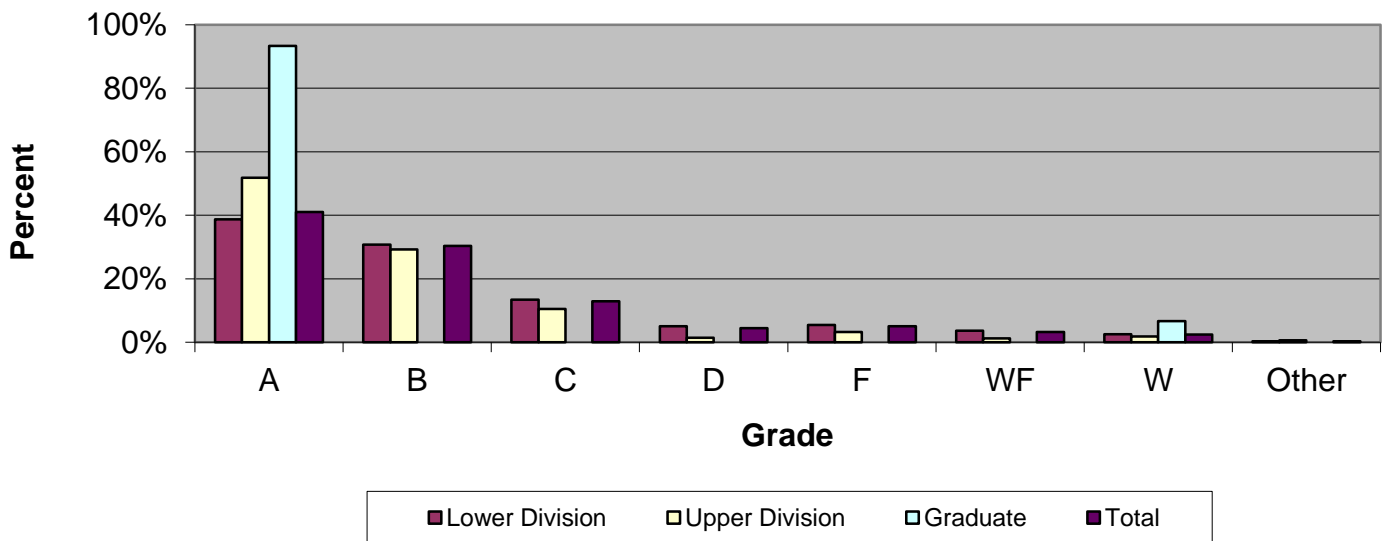
## Grade Distribution of Full-Time Faculty for 2014-15 College of the Arts



### Grade Distribution by Level of Instruction - College of the Arts

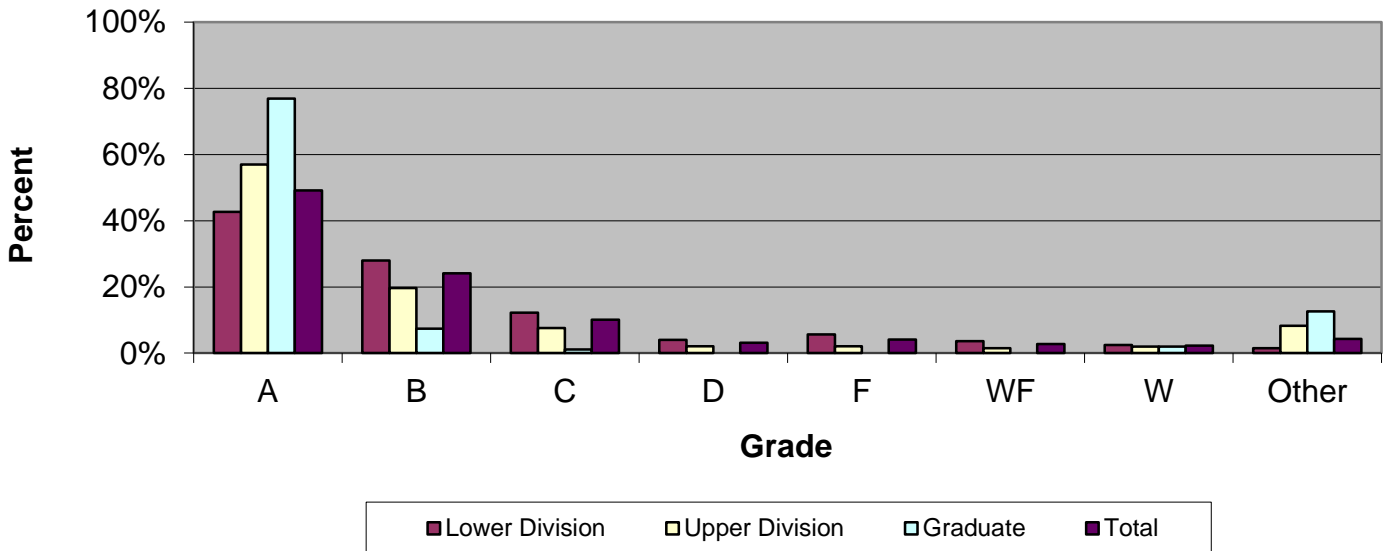
Full-Time Faculty	A's	B's	C's	D's	F's	WF's	W's	Other	Total
<i>2011-2012</i>									
Lower Division	1,509	838	405	121	174	81	106	87	3,321
Percent	45.4%	25.2%	12.2%	3.6%	5.2%	2.4%	3.2%	2.6%	100.0%
Upper Division	1,314	572	229	55	52	20	63	248	2,553
Percent	51.5%	22.4%	9.0%	2.2%	2.0%	0.8%	2.5%	9.7%	100.0%
Graduate	269	33	8	1	3	1	6	13	334
Percent	80.5%	9.9%	2.4%	0.3%	0.9%	0.3%	1.8%	3.9%	100.0%
Total	3,092	1,443	642	177	229	102	175	348	6,208
Percent	49.8%	23.2%	10.3%	2.9%	3.7%	1.6%	2.8%	5.6%	100.0%
<i>2012-2013</i>									
Lower Division	1,663	933	415	109	105	108	101	92	3,526
Percent	47.2%	26.5%	11.8%	3.1%	3.0%	3.1%	2.9%	2.6%	100.0%
Upper Division	1,270	549	219	41	44	35	45	230	2,433
Percent	52.2%	22.6%	9.0%	1.7%	1.8%	1.4%	1.8%	9.5%	100.0%
Graduate	250	38	5	0	0	1	2	44	340
Percent	73.5%	11.2%	1.5%	0.0%	0.0%	0.3%	0.6%	12.9%	100.0%
Total	3,183	1,520	639	150	149	144	148	366	6,299
Percent	50.5%	24.1%	10.1%	2.4%	2.4%	2.3%	2.3%	5.8%	100.0%
<i>2013-2014</i>									
Lower Division	1,895	995	488	135	189	121	79	88	3,990
Percent	47.5%	24.9%	12.2%	3.4%	4.7%	3.0%	2.0%	2.2%	100.0%
Upper Division	1,418	619	268	55	53	28	27	252	2,720
Percent	52.1%	22.8%	9.9%	2.0%	1.9%	1.0%	1.0%	9.3%	100.0%
Graduate	331	40	4	0	0	0	2	59	436
Percent	75.9%	9.2%	0.9%	0.0%	0.0%	0.0%	0.5%	13.5%	100.0%
Total	3,644	1,654	760	190	242	149	108	399	7,146
Percent	51.0%	23.1%	10.6%	2.7%	3.4%	2.1%	1.5%	5.6%	100.0%
<i>2014-2015</i>									
Lower Division	1,599	906	396	111	203	125	83	81	3,504
Percent	45.6%	25.9%	11.3%	3.2%	5.8%	3.6%	2.4%	2.3%	100.0%
Upper Division	1,699	531	208	64	54	46	58	279	2,939
Percent	57.8%	18.1%	7.1%	2.2%	1.8%	1.6%	2.0%	9.5%	100.0%
Graduate	339	34	5	0	0	0	8	58	444
Percent	76.4%	7.7%	1.1%	0.0%	0.0%	0.0%	1.8%	13.1%	100.0%
Total	3,637	1,471	609	175	257	171	149	418	6,887
Percent	52.8%	21.4%	8.8%	2.5%	3.7%	2.5%	2.2%	6.1%	100.0%

Grade Distribution of Part-Time Faculty for 2014-15  
College of the Arts



Grade Distribution by Level of Instruction - College of the Arts									
Part-Time Faculty	A's	B's	C's	D's	F's	WF's	W's	Other	Total
<i>2011-2012</i>									
Lower Division	800	506	229	74	109	69	54	4	1,845
Percent	43.4%	27.4%	12.4%	4.0%	5.9%	3.7%	2.9%	0.2%	100.0%
Upper Division	141	49	24	5	10	5	4	2	240
Percent	58.8%	20.4%	10.0%	2.1%	4.2%	2.1%	1.7%	0.8%	100.0%
Graduate	16	1	0	0	0	0	0	0	17
Percent	94.1%	5.9%	0.0%	0.0%	0.0%	0.0%	0.0%	0.0%	100.0%
<b>Total</b>	<b>957</b>	<b>556</b>	<b>253</b>	<b>79</b>	<b>119</b>	<b>74</b>	<b>58</b>	<b>6</b>	<b>2,102</b>
Percent	45.5%	26.5%	12.0%	3.8%	5.7%	3.5%	2.8%	0.3%	100.0%
<i>2012-13</i>									
Lower Division	853	614	257	112	141	111	62	11	2,161
Percent	39.5%	28.4%	11.9%	5.2%	6.5%	5.1%	2.9%	0.5%	100.0%
Upper Division	175	87	30	6	8	6	13	10	335
Percent	52.2%	26.0%	9.0%	1.8%	2.4%	1.8%	3.9%	3.0%	100.0%
Graduate	25	0	0	0	0	0	0	0	25
Percent	100.0%	0.0%	0.0%	0.0%	0.0%	0.0%	0.0%	0.0%	100.0%
<b>Total</b>	<b>1,053</b>	<b>701</b>	<b>287</b>	<b>118</b>	<b>149</b>	<b>117</b>	<b>75</b>	<b>21</b>	<b>2,521</b>
Percent	41.8%	27.8%	11.4%	4.7%	5.9%	4.6%	3.0%	0.8%	100.0%
<i>2013-2014</i>									
Lower Division	974	560	259	96	78	78	48	8	2,101
Percent	46.4%	26.7%	12.3%	4.6%	3.7%	3.7%	2.3%	0.4%	100.0%
Upper Division	97	72	15	3	3	1	2	8	201
Percent	48.3%	35.8%	7.5%	1.5%	1.5%	0.5%	1.0%	4.0%	100.0%
Graduate	3	0	0	0	0	0	0	0	3
Percent	100.0%	0.0%	0.0%	0.0%	0.0%	0.0%	0.0%	0.0%	100.0%
<b>Total</b>	<b>1,074</b>	<b>632</b>	<b>274</b>	<b>99</b>	<b>81</b>	<b>79</b>	<b>50</b>	<b>16</b>	<b>2,305</b>
Percent	46.6%	27.4%	11.9%	4.3%	3.5%	3.4%	2.2%	0.7%	100.0%
<i>2014-2015</i>									
Lower Division	1,002	797	348	131	141	95	67	9	2,590
Percent	38.7%	30.8%	13.4%	5.1%	5.4%	3.7%	2.6%	0.3%	100.0%
Upper Division	252	142	51	7	16	6	9	3	486
Percent	51.9%	29.2%	10.5%	1.4%	3.3%	1.2%	1.9%	0.6%	100.0%
Graduate	14	0	0	0	0	0	1	0	15
Percent	93.3%	0.0%	0.0%	0.0%	0.0%	0.0%	6.7%	0.0%	100.0%
<b>Total</b>	<b>1,268</b>	<b>939</b>	<b>399</b>	<b>138</b>	<b>157</b>	<b>101</b>	<b>77</b>	<b>12</b>	<b>3,091</b>
Percent	41.0%	30.4%	12.9%	4.5%	5.1%	3.3%	2.5%	0.4%	100.0%

Grade Distribution of All Faculty for 2014-15  
College of the Arts



**Grade Distribution by Level of Instruction - College of the Arts**

All Faculty	A's	B's	C's	D's	F's	WF's	W's	Other	Total
<i>2011-2012</i>									
Lower Division	2,309	1,344	634	195	283	150	160	91	5,166
Percent	44.7%	26.0%	12.3%	3.8%	5.5%	2.9%	3.1%	1.8%	100.0%
Upper Division	1,455	621	253	60	62	25	67	250	2,793
Percent	52.1%	22.2%	9.1%	2.1%	2.2%	0.9%	2.4%	9.0%	100.0%
Graduate	285	34	8	1	3	1	6	13	351
Percent	81.2%	9.7%	2.3%	0.3%	0.9%	0.3%	1.7%	3.7%	100.0%
<b>Total</b>	<b>4,049</b>	<b>1,999</b>	<b>895</b>	<b>256</b>	<b>348</b>	<b>176</b>	<b>233</b>	<b>354</b>	<b>8,310</b>
Percent	48.7%	24.1%	10.8%	3.1%	4.2%	2.1%	2.8%	4.3%	100.0%
<i>2012-2013</i>									
Lower Division	2,516	1,547	672	221	246	219	163	103	5,687
Percent	44.2%	27.2%	11.8%	3.9%	4.3%	3.9%	2.9%	1.8%	100.0%
Upper Division	1,445	636	249	47	52	41	58	240	2,768
Percent	52.2%	23.0%	9.0%	1.7%	1.9%	1.5%	2.1%	8.7%	100.0%
Graduate	275	38	5	0	0	1	2	44	365
Percent	75.3%	10.4%	1.4%	0.0%	0.0%	0.3%	0.5%	12.1%	100.0%
<b>Total</b>	<b>4,236</b>	<b>2,221</b>	<b>926</b>	<b>268</b>	<b>298</b>	<b>261</b>	<b>223</b>	<b>387</b>	<b>8,820</b>
Percent	48.0%	25.2%	10.5%	3.0%	3.4%	3.0%	2.5%	4.4%	100.0%
<i>2013-2014</i>									
Lower Division	2,869	1,555	747	231	267	199	127	96	6,091
Percent	47.1%	25.5%	12.3%	3.8%	4.4%	3.3%	2.1%	1.6%	100.0%
Upper Division	1,515	691	283	58	56	29	29	260	2,921
Percent	51.9%	23.7%	9.7%	2.0%	1.9%	1.0%	1.0%	8.9%	100.0%
Graduate	334	40	4	0	0	0	2	59	439
Percent	76.1%	9.1%	0.9%	0.0%	0.0%	0.0%	0.5%	13.4%	100.0%
<b>Total</b>	<b>4,718</b>	<b>2,286</b>	<b>1,034</b>	<b>289</b>	<b>323</b>	<b>228</b>	<b>158</b>	<b>415</b>	<b>9,451</b>
Percent	49.9%	24.2%	10.9%	3.1%	3.4%	2.4%	1.7%	4.4%	100.0%
<i>2014-2015</i>									
Lower Division	2,601	1,703	744	242	344	220	150	90	6,094
Percent	42.7%	27.9%	12.2%	4.0%	5.6%	3.6%	2.5%	1.5%	100.0%
Upper Division	1,951	673	259	71	70	52	67	282	3,425
Percent	57.0%	19.6%	7.6%	2.1%	2.0%	1.5%	2.0%	8.2%	100.0%
Graduate	353	34	5	0	0	0	9	58	459
Percent	76.9%	7.4%	1.1%	0.0%	0.0%	0.0%	2.0%	12.6%	100.0%
<b>Total</b>	<b>4,905</b>	<b>2,410</b>	<b>1,008</b>	<b>313</b>	<b>414</b>	<b>272</b>	<b>226</b>	<b>430</b>	<b>9,978</b>
Percent	49.2%	24.2%	10.1%	3.1%	4.1%	2.7%	2.3%	4.3%	100.0%