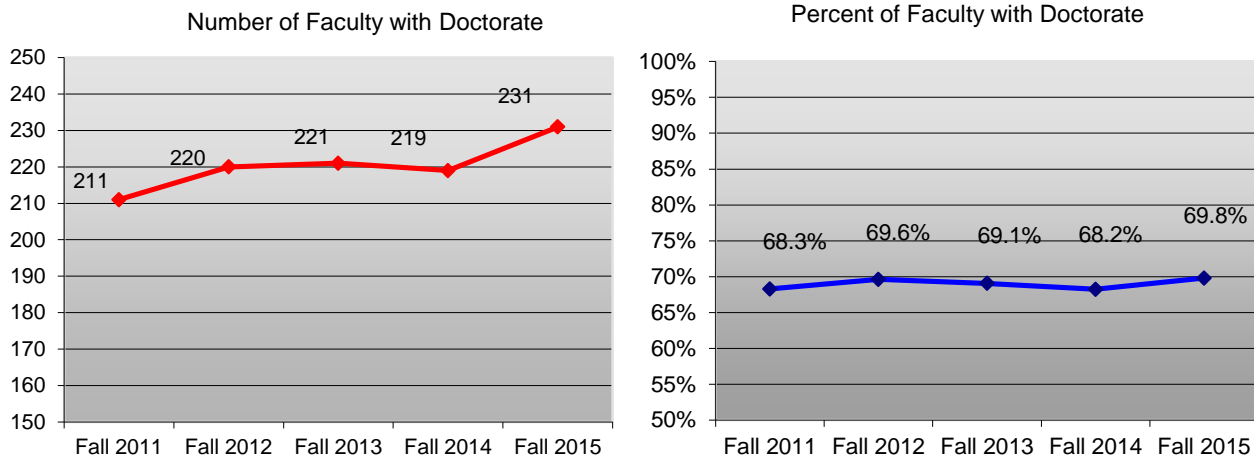


Columbus State University

Full-Time Employees With Faculty Status

2011 - 2015

Trend By Doctorate Degrees and Percent of All Full-Time Faculty



	<u>Fall 2011</u>		<u>Fall 2012</u>		<u>Fall 2013</u>		<u>Fall 2014</u>		<u>Fall 2015</u>		<u>4-Year N</u>	<u>4-Year % Change</u>
	% FT		% FT		% FT		% FT		% FT			
	N	Faculty	N	Faculty	N	Faculty	N	Faculty	N	Faculty		
<b>Total FT Faculty</b>	<b>309</b>		<b>316</b>		<b>320</b>		<b>321</b>		<b>331</b>		<b>22</b>	<b>7.1%</b>
<b>N with Doctorate</b>	211	68.3%	220	69.6%	221	69.1%	219	68.2%	231	69.8%	20	9.5%

The numbers include instructional faculty, administrators, librarians and other professional staff with faculty status.