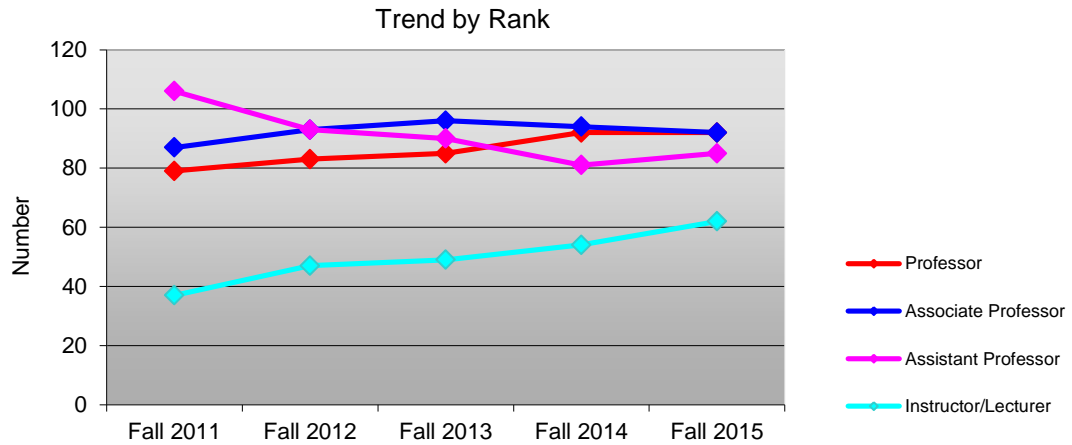


Columbus State University

Full-Time Employees With Faculty Status

2011 - 2015

Trend By Rank and Percent of Total Full-Time Faculty



	Fall 2011		Fall 2012		Fall 2013		Fall 2014		Fall 2015		4-Year N Change	4-Year % Change
	% FT		% FT		% FT		% FT		% FT			
	N	Faculty	N	Faculty	N	Faculty	N	Faculty	N	Faculty		
<b>Total FT Faculty</b>	<b>309</b>		<b>316</b>		<b>320</b>		<b>321</b>		<b>331</b>		<b>22</b>	<b>7.1%</b>
Professor	79	25.6%	83	26.3%	85	26.6%	92	28.7%	92	27.8%	13	16.5%
Associate Professor	87	28.2%	93	29.4%	96	30.0%	94	29.3%	92	27.8%	5	5.7%
Assistant Professor	106	34.3%	93	29.4%	90	28.1%	81	25.2%	85	25.7%	-21	-19.8%
Instructor/Lecturer	37	12.0%	47	14.9%	49	15.3%	54	16.8%	62	18.7%	25	67.6%

The numbers include instructional faculty, administrators, librarians and other professional staff with faculty status.