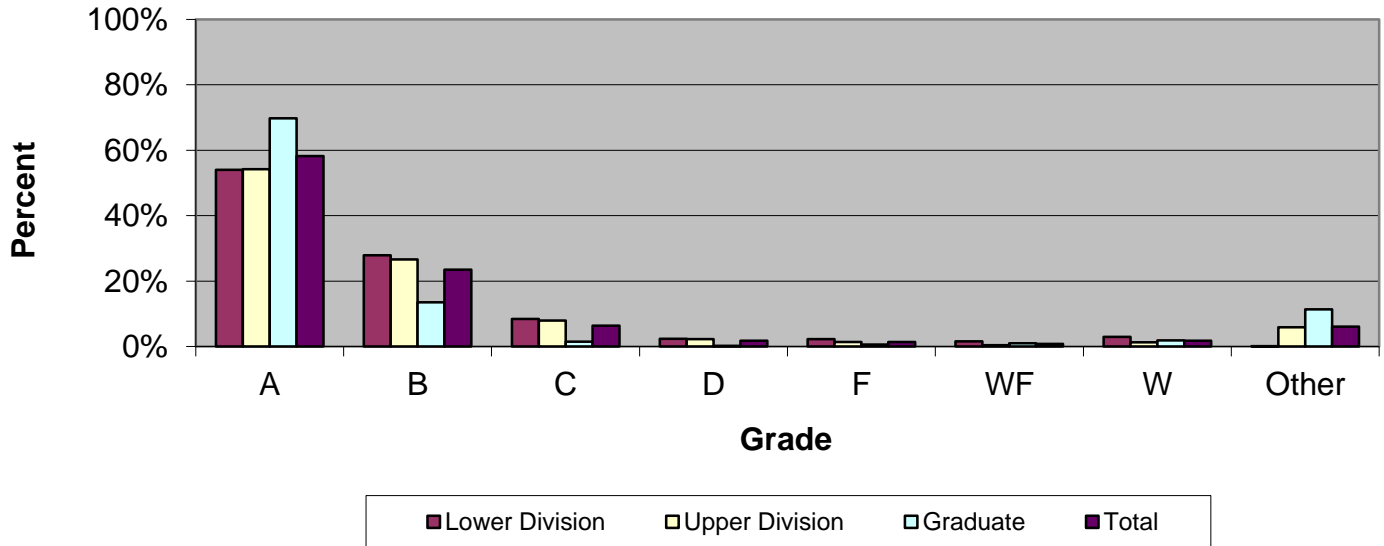


# CSU Facts & Figures 2014: Grade Distribution

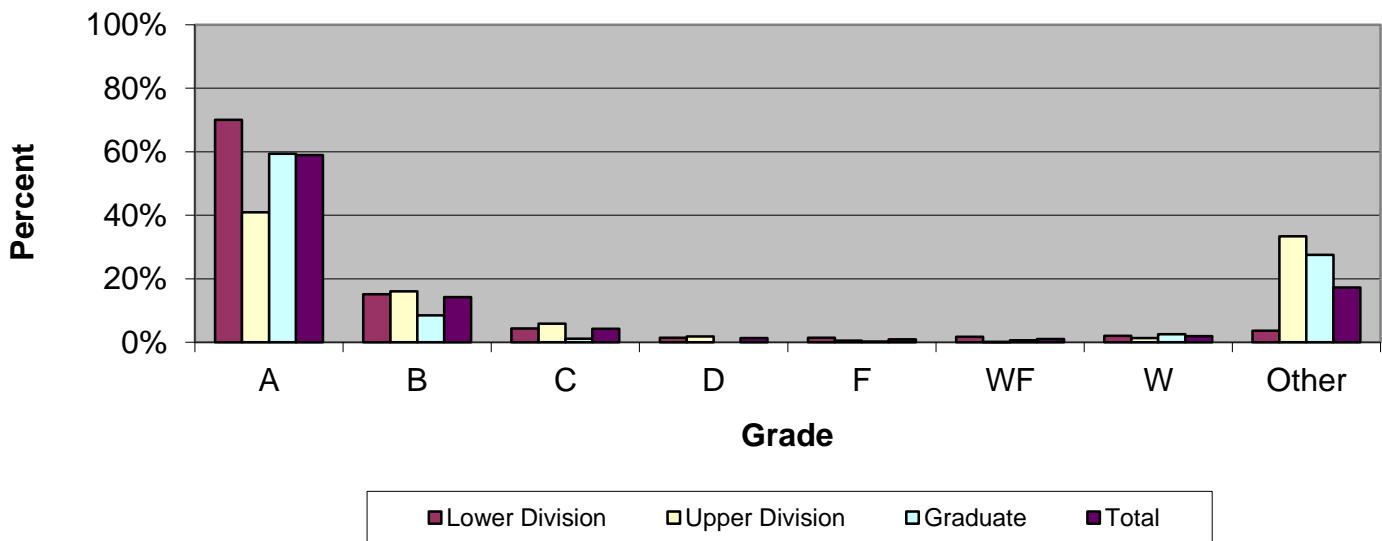
## Grade Distribution of Full-Time Faculty for 2013-14 College of Education & Health Professions



### Grade Distribution by Level of Instruction - College of Education & Health Professions

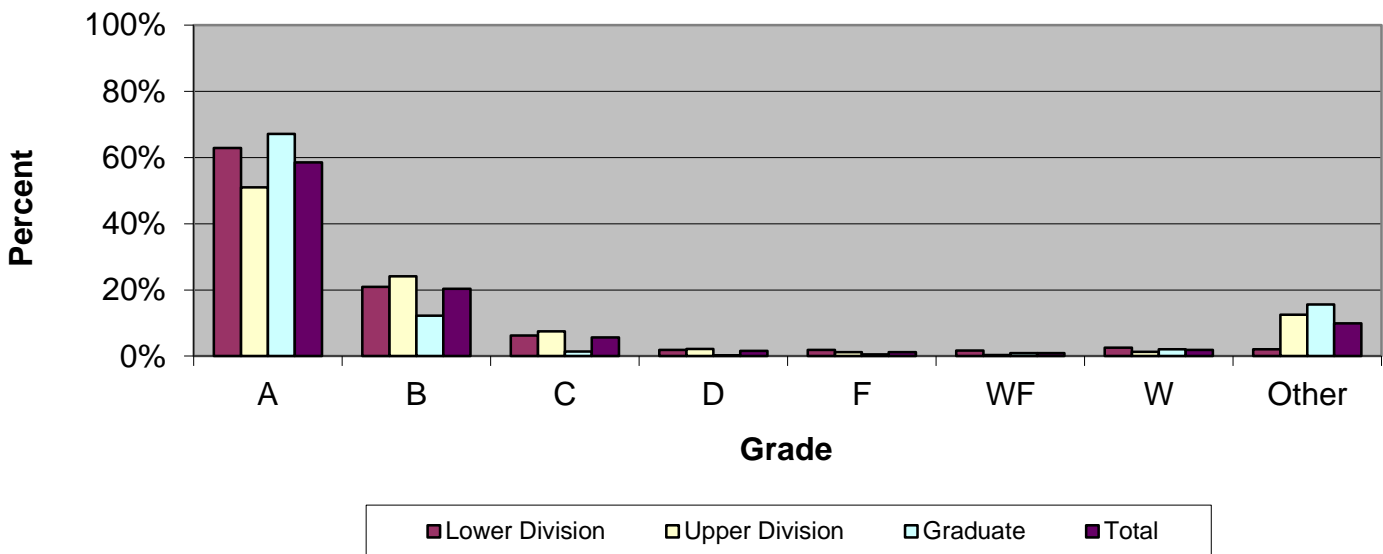
Full-Time Faculty	A's	B's	C's	D's	F's	WF's	W's	Other	Total
<i>2010-2011</i>									
Lower Division	1,171	575	199	58	68	72	61	12	2,216
Percent	52.8%	25.9%	9.0%	2.6%	3.1%	3.2%	2.8%	0.5%	100.0%
Upper Division	1,774	1,057	267	74	52	36	49	421	3,730
Percent	47.6%	28.3%	7.2%	2.0%	1.4%	1.0%	1.3%	11.3%	100.0%
Graduate	1,879	256	63	10	14	31	59	376	2,688
Percent	69.9%	9.5%	2.3%	0.4%	0.5%	1.2%	2.2%	14.0%	100.0%
<b>Total</b>	<b>4,824</b>	<b>1,888</b>	<b>529</b>	<b>142</b>	<b>134</b>	<b>139</b>	<b>169</b>	<b>809</b>	<b>8,634</b>
Percent	55.9%	21.9%	6.1%	1.6%	1.6%	1.6%	2.0%	9.4%	100.0%
<i>2011-2012</i>									
Lower Division	1,065	577	211	59	51	55	64	36	2,118
Percent	50.3%	27.2%	10.0%	2.8%	2.4%	2.6%	3.0%	1.7%	100.0%
Upper Division	1,800	1,063	330	101	55	23	35	223	3,630
Percent	49.6%	29.3%	9.1%	2.8%	1.5%	0.6%	1.0%	6.1%	100.0%
Graduate	1,992	324	54	5	32	24	60	320	2,811
Percent	70.9%	11.5%	1.9%	0.2%	1.1%	0.9%	2.1%	11.4%	100.0%
<b>Total</b>	<b>4,857</b>	<b>1,964</b>	<b>595</b>	<b>165</b>	<b>138</b>	<b>102</b>	<b>159</b>	<b>579</b>	<b>8,559</b>
Percent	56.7%	22.9%	7.0%	1.9%	1.6%	1.2%	1.9%	6.8%	100.0%
<i>2012-2013</i>									
Lower Division	965	466	166	47	51	48	65	53	1,861
Percent	51.9%	25.0%	8.9%	2.5%	2.7%	2.6%	3.5%	2.8%	100.0%
Upper Division	2,044	1,194	385	113	77	38	63	265	4,179
Percent	48.9%	28.6%	9.2%	2.7%	1.8%	0.9%	1.5%	6.3%	100.0%
Graduate	1,569	264	47	4	14	34	62	207	2,201
Percent	71.3%	12.0%	2.1%	0.2%	0.6%	1.5%	2.8%	9.4%	100.0%
<b>Total</b>	<b>4,578</b>	<b>1,924</b>	<b>598</b>	<b>164</b>	<b>142</b>	<b>120</b>	<b>190</b>	<b>525</b>	<b>8,241</b>
Percent	55.6%	23.3%	7.3%	2.0%	1.7%	1.5%	2.3%	6.4%	100.0%
<i>2013-2014</i>									
Lower Division	1,002	518	157	45	43	29	56	3	1,853
Percent	54.1%	28.0%	8.5%	2.4%	2.3%	1.6%	3.0%	0.2%	100.0%
Upper Division	2,379	1,169	349	100	61	17	57	258	4,390
Percent	54.2%	26.6%	7.9%	2.3%	1.4%	0.4%	1.3%	5.9%	100.0%
Graduate	1,548	300	33	6	13	22	43	252	2,217
Percent	69.8%	13.5%	1.5%	0.3%	0.6%	1.0%	1.9%	11.4%	100.0%
<b>Total</b>	<b>4,929</b>	<b>1,987</b>	<b>539</b>	<b>151</b>	<b>117</b>	<b>68</b>	<b>156</b>	<b>513</b>	<b>8,460</b>
Percent	58.3%	23.5%	6.4%	1.8%	1.4%	0.8%	1.8%	6.1%	100.0%

Grade Distribution of Part-Time Faculty for 2013-14  
College of Education & Health Professions



Grade Distribution by Level of Instruction - College of Education & Health Professions									
Part-Time Faculty	A's	B's	C's	D's	F's	WF's	W's	Other	Total
<b>2010-2011</b>									
Lower Division	1,754	288	87	28	66	81	68	38	2,410
Percent	72.8%	12.0%	3.6%	1.2%	2.7%	3.4%	2.8%	1.6%	100.0%
Upper Division	286	144	81	25	11	7	13	291	858
Percent	33.3%	16.8%	9.4%	2.9%	1.3%	0.8%	1.5%	33.9%	100.0%
Graduate	870	135	29	6	16	13	34	212	1,315
Percent	66.2%	10.3%	2.2%	0.5%	1.2%	1.0%	2.6%	16.1%	100.0%
<b>Total</b>	<b>2,910</b>	<b>567</b>	<b>197</b>	<b>59</b>	<b>93</b>	<b>101</b>	<b>115</b>	<b>541</b>	<b>4,583</b>
Percent	63.5%	12.4%	4.3%	1.3%	2.0%	2.2%	2.5%	11.8%	100.0%
<b>2011-2012</b>									
Lower Division	1,606	363	87	20	42	47	73	87	2,325
Percent	69.1%	15.6%	3.7%	0.9%	1.8%	2.0%	3.1%	3.7%	100.0%
Upper Division	378	150	95	20	7	5	12	465	1,132
Percent	33.4%	13.3%	8.4%	1.8%	0.6%	0.4%	1.1%	41.1%	100.0%
Graduate	664	87	26	3	12	11	26	230	1,059
Percent	62.7%	8.2%	2.5%	0.3%	1.1%	1.0%	2.5%	21.7%	100.0%
<b>Total</b>	<b>2,648</b>	<b>600</b>	<b>208</b>	<b>43</b>	<b>61</b>	<b>63</b>	<b>111</b>	<b>782</b>	<b>4,516</b>
Percent	58.6%	13.3%	4.6%	1.0%	1.4%	1.4%	2.5%	17.3%	100.0%
<b>2012-2013</b>									
Lower Division	1,587	314	74	24	27	25	51	85	2,187
Percent	72.6%	14.4%	3.4%	1.1%	1.2%	1.1%	2.3%	3.9%	100.0%
Upper Division	368	101	37	6	6	5	12	389	924
Percent	39.8%	10.9%	4.0%	0.6%	0.6%	0.5%	1.3%	42.1%	100.0%
Graduate	504	46	8	4	13	7	33	335	950
Percent	53.1%	4.8%	0.8%	0.4%	1.4%	0.7%	3.5%	35.3%	100.0%
<b>Total</b>	<b>2,459</b>	<b>461</b>	<b>119</b>	<b>34</b>	<b>46</b>	<b>37</b>	<b>96</b>	<b>809</b>	<b>4,061</b>
Percent	60.6%	11.4%	2.9%	0.8%	1.1%	0.9%	2.4%	19.9%	100.0%
<b>2013-2014</b>									
Lower Division	1,568	339	97	33	32	40	47	81	2,237
Percent	70.1%	15.2%	4.3%	1.5%	1.4%	1.8%	2.1%	3.6%	100.0%
Upper Division	567	222	81	25	8	2	18	463	1,386
Percent	40.9%	16.0%	5.8%	1.8%	0.6%	0.1%	1.3%	33.4%	100.0%
Graduate	470	67	9	2	5	20	218	791	
Percent	59.4%	8.5%	1.1%	0.0%	0.3%	0.6%	2.5%	27.6%	100.0%
<b>Total</b>	<b>2,605</b>	<b>628</b>	<b>187</b>	<b>58</b>	<b>42</b>	<b>47</b>	<b>85</b>	<b>762</b>	<b>4,414</b>
Percent	59.0%	14.2%	4.2%	1.3%	1.0%	1.1%	1.9%	17.3%	100.0%

Grade Distribution of All Faculty for 2012-13  
College of Education & Health Professions



**Grade Distribution by Level of Instruction - College of Education & Health Professions**

All Faculty	A's	B's	C's	D's	F's	WF's	W's	Other	Total
<i>2010-2011</i>									
Lower Division	2,671	940	298	79	93	102	137	123	4,443
Percent	60.1%	21.2%	6.7%	1.8%	2.1%	2.3%	3.1%	2.8%	100.0%
Upper Division	2,178	1,213	425	121	62	28	47	688	4,762
Percent	45.7%	25.5%	8.9%	2.5%	1.3%	0.6%	1.0%	14.4%	100.0%
Graduate	2,656	411	80	8	44	35	86	550	3,870
Percent	68.6%	10.6%	2.1%	0.2%	1.1%	0.9%	2.2%	14.2%	100.0%
<b>Total</b>	<b>7,505</b>	<b>2,564</b>	<b>803</b>	<b>208</b>	<b>199</b>	<b>165</b>	<b>270</b>	<b>1,361</b>	<b>13,075</b>
Percent	57.4%	19.6%	6.1%	1.6%	1.5%	1.3%	2.1%	10.4%	100.0%
<i>2011-2012</i>									
Lower Division	2,552	780	240	71	78	73	116	138	4,048
Percent	63.0%	19.3%	5.9%	1.8%	1.9%	1.8%	2.9%	3.4%	100.0%
Upper Division	2,412	1,295	422	119	83	43	75	654	5,103
Percent	47.3%	25.4%	8.3%	2.3%	1.6%	0.8%	1.5%	12.8%	100.0%
Graduate	2,073	310	55	8	27	41	95	542	3,151
Percent	65.8%	9.8%	1.7%	0.3%	0.9%	1.3%	3.0%	17.2%	100.0%
<b>Total</b>	<b>7,037</b>	<b>2,385</b>	<b>717</b>	<b>198</b>	<b>188</b>	<b>157</b>	<b>286</b>	<b>1,334</b>	<b>12,302</b>
Percent	57.2%	19.4%	5.8%	1.6%	1.5%	1.3%	2.3%	10.8%	100.0%
<i>2012-2013</i>									
Lower Division	2,552	780	240	71	78	73	116	138	4,048
Percent	63.0%	19.3%	5.9%	1.8%	1.9%	1.8%	2.9%	3.4%	100.0%
Upper Division	2,412	1,295	422	119	83	43	75	654	5,103
Percent	47.3%	25.4%	8.3%	2.3%	1.6%	0.8%	1.5%	12.8%	100.0%
Graduate	2,073	310	55	8	27	41	95	542	3,151
Percent	65.8%	9.8%	1.7%	0.3%	0.9%	1.3%	3.0%	17.2%	100.0%
<b>Total</b>	<b>7,037</b>	<b>2,385</b>	<b>717</b>	<b>198</b>	<b>188</b>	<b>157</b>	<b>286</b>	<b>1,334</b>	<b>12,302</b>
Percent	57.2%	19.4%	5.8%	1.6%	1.5%	1.3%	2.3%	10.8%	100.0%
<i>2013-2014</i>									
Lower Division	2,570	857	254	78	75	69	103	84	4,090
Percent	62.8%	21.0%	6.2%	1.9%	1.8%	1.7%	2.5%	2.1%	100.0%
Upper Division	2,946	1,391	430	125	69	19	75	721	5,776
Percent	51.0%	24.1%	7.4%	2.2%	1.2%	0.3%	1.3%	12.5%	100.0%
Graduate	2,018	367	42	6	15	27	63	470	3,008
Percent	67.1%	12.2%	1.4%	0.2%	0.5%	0.9%	2.1%	15.6%	100.0%
<b>Total</b>	<b>7,534</b>	<b>2,615</b>	<b>726</b>	<b>209</b>	<b>159</b>	<b>115</b>	<b>241</b>	<b>1,275</b>	<b>12,874</b>
Percent	58.5%	20.3%	5.6%	1.6%	1.2%	0.9%	1.9%	9.9%	100.0%