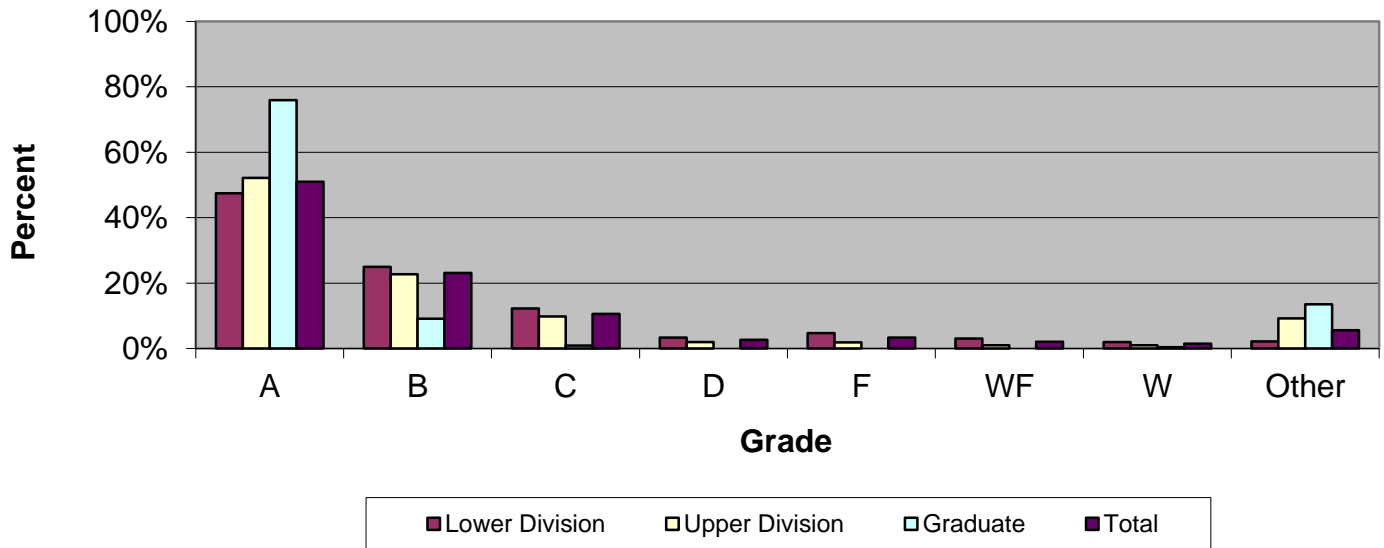


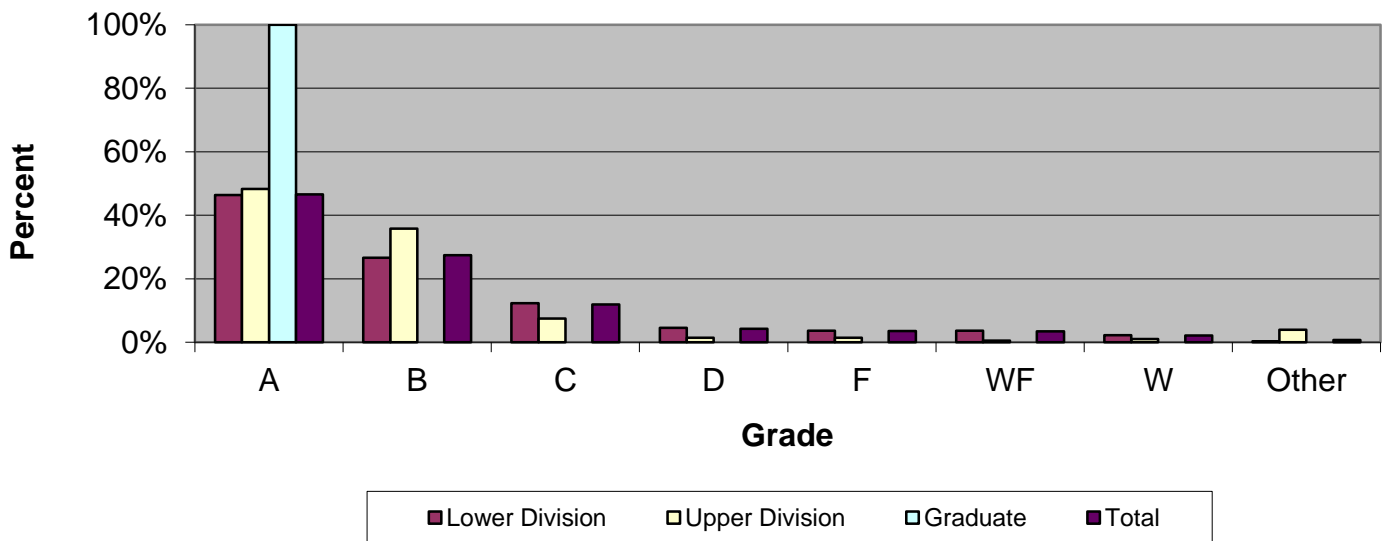
# CSU Facts & Figures 2014: Grade Distribution

## Grade Distribution of Full-Time Faculty for 2013-14 College of the Arts



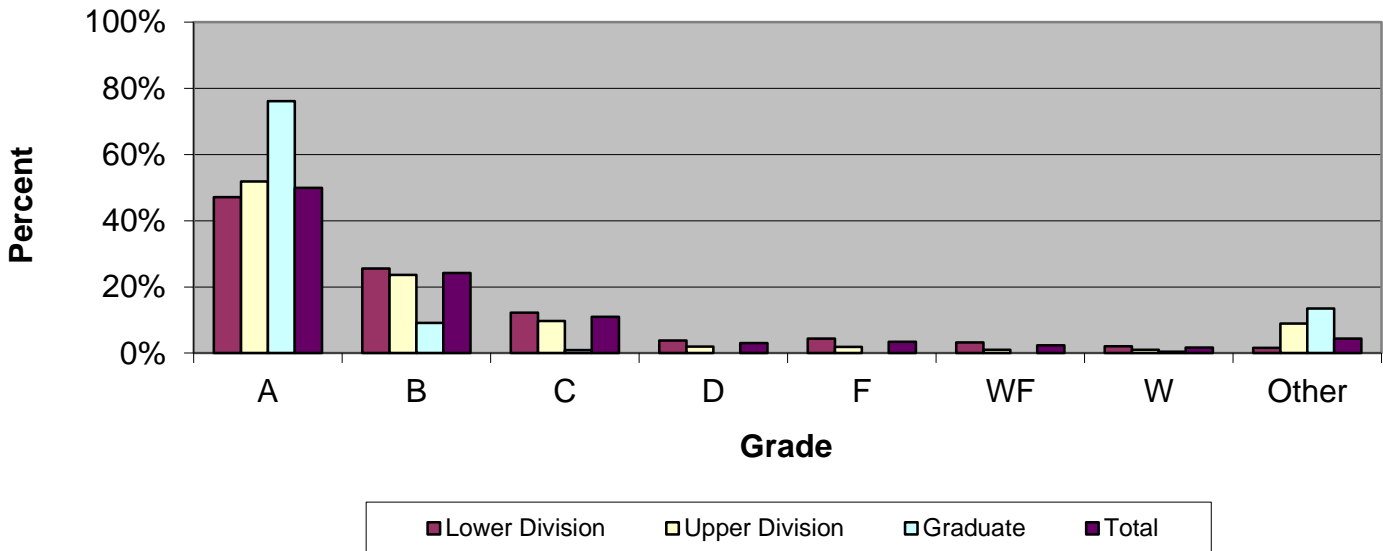
Grade Distribution by Level of Instruction - College of the Arts									
Full-Time Faculty	A's	B's	C's	D's	F's	WF's	W's	Other	Total
<i>2010-2011</i>									
Lower Division	1,406	931	405	148	189	124	98	89	3,390
Percent	41.5%	27.5%	11.9%	4.4%	5.6%	3.7%	2.9%	2.6%	100.0%
Upper Division	1,194	594	286	56	46	45	32	249	2,502
Percent	47.7%	23.7%	11.4%	2.2%	1.8%	1.8%	1.3%	10.0%	100.0%
Graduate	170	7	2	0	2	0	1	1	183
Percent	92.9%	3.8%	1.1%	0.0%	1.1%	0.0%	0.5%	0.5%	100.0%
Total	2,770	1,532	693	204	237	169	131	339	6,075
Percent	45.6%	25.2%	11.4%	3.4%	3.9%	2.8%	2.2%	5.6%	100.0%
<i>2011-2012</i>									
Lower Division	1,509	838	405	121	174	81	106	87	3,321
Percent	45.4%	25.2%	12.2%	3.6%	5.2%	2.4%	3.2%	2.6%	100.0%
Upper Division	1,314	572	229	55	52	20	63	248	2,553
Percent	51.5%	22.4%	9.0%	2.2%	2.0%	0.8%	2.5%	9.7%	100.0%
Graduate	269	33	8	1	3	1	6	13	334
Percent	80.5%	9.9%	2.4%	0.3%	0.9%	0.3%	1.8%	3.9%	100.0%
Total	3,092	1,443	642	177	229	102	175	348	6,208
Percent	49.8%	23.2%	10.3%	2.9%	3.7%	1.6%	2.8%	5.6%	100.0%
<i>2012-2013</i>									
Lower Division	1,663	933	415	109	105	108	101	92	3,526
Percent	47.2%	26.5%	11.8%	3.1%	3.0%	3.1%	2.9%	2.6%	100.0%
Upper Division	1,270	549	219	41	44	35	45	230	2,433
Percent	52.2%	22.6%	9.0%	1.7%	1.8%	1.4%	1.8%	9.5%	100.0%
Graduate	250	38	5	0	0	1	2	44	340
Percent	73.5%	11.2%	1.5%	0.0%	0.0%	0.3%	0.6%	12.9%	100.0%
Total	3,183	1,520	639	150	149	144	148	366	6,299
Percent	50.5%	24.1%	10.1%	2.4%	2.4%	2.3%	2.3%	5.8%	100.0%
<i>2013-2014</i>									
Lower Division	1,895	995	488	135	189	121	79	88	3,990
Percent	47.5%	24.9%	12.2%	3.4%	4.7%	3.0%	2.0%	2.2%	100.0%
Upper Division	1,418	619	268	55	53	28	27	252	2,720
Percent	52.1%	22.8%	9.9%	2.0%	1.9%	1.0%	1.0%	9.3%	100.0%
Graduate	331	40	4	0	0	0	2	59	436
Percent	75.9%	9.2%	0.9%	0.0%	0.0%	0.0%	0.5%	13.5%	100.0%
Total	3,644	1,654	760	190	242	149	108	399	7,146
Percent	51.0%	23.1%	10.6%	2.7%	3.4%	2.1%	1.5%	5.6%	100.0%

Grade Distribution of Part-Time Faculty for 2013-14  
College of the Arts



Grade Distribution by Level of Instruction - College of the Arts									
Part-Time Faculty	A's	B's	C's	D's	F's	WF's	W's	Other	Total
<i>2010-2011</i>									
Lower Division	827	587	248	95	93	91	66	21	2,028
Percent	40.8%	28.9%	12.2%	4.7%	4.6%	4.5%	3.3%	1.0%	100.0%
Upper Division	136	34	9	0	0	5	5	0	189
Percent	72.0%	18.0%	4.8%	0.0%	0.0%	2.6%	2.6%	0.0%	100.0%
Graduate	11	1	0	0	0	0	1	0	13
Percent	84.6%	7.7%	0.0%	0.0%	0.0%	0.0%	7.7%	0.0%	100.0%
Total	974	622	257	95	93	96	72	21	2,230
Percent	43.7%	27.9%	11.5%	4.3%	4.2%	4.3%	3.2%	0.9%	100.0%
<i>2011-2012</i>									
Lower Division	800	506	229	74	109	69	54	4	1,845
Percent	43.4%	27.4%	12.4%	4.0%	5.9%	3.7%	2.9%	0.2%	100.0%
Upper Division	141	49	24	5	10	5	4	2	240
Percent	58.8%	20.4%	10.0%	2.1%	4.2%	2.1%	1.7%	0.8%	100.0%
Graduate	16	1	0	0	0	0	0	0	17
Percent	94.1%	5.9%	0.0%	0.0%	0.0%	0.0%	0.0%	0.0%	100.0%
Total	957	556	253	79	119	74	58	6	2,102
Percent	45.5%	26.5%	12.0%	3.8%	5.7%	3.5%	2.8%	0.3%	100.0%
<i>2012-2013</i>									
Lower Division	853	614	257	112	141	111	62	11	2,161
Percent	39.5%	28.4%	11.9%	5.2%	6.5%	5.1%	2.9%	0.5%	100.0%
Upper Division	175	87	30	6	8	6	13	10	335
Percent	52.2%	26.0%	9.0%	1.8%	2.4%	1.8%	3.9%	3.0%	100.0%
Graduate	25	0	0	0	0	0	0	0	25
Percent	100.0%	0.0%	0.0%	0.0%	0.0%	0.0%	0.0%	0.0%	100.0%
Total	1,053	701	287	118	149	117	75	21	2,521
Percent	41.8%	27.8%	11.4%	4.7%	5.9%	4.6%	3.0%	0.8%	100.0%
<i>2013-2014</i>									
Lower Division	974	560	259	96	78	78	48	8	2,101
Percent	46.4%	26.7%	12.3%	4.6%	3.7%	3.7%	2.3%	0.4%	100.0%
Upper Division	97	72	15	3	3	1	2	8	201
Percent	48.3%	35.8%	7.5%	1.5%	1.5%	0.5%	1.0%	4.0%	100.0%
Graduate	3	0	0	0	0	0	0	0	3
Percent	100.0%	0.0%	0.0%	0.0%	0.0%	0.0%	0.0%	0.0%	100.0%
Total	1,074	632	274	99	81	79	50	16	2,305
Percent	46.6%	27.4%	11.9%	4.3%	3.5%	3.4%	2.2%	0.7%	100.0%

Grade Distribution of All Faculty for 2013-14  
College of the Arts



**Grade Distribution by Level of Instruction - College of the Arts**

All Faculty	A's	B's	C's	D's	F's	WF's	W's	Other	Total
<i>2010-2011</i>									
Lower Division	2,309	1,344	634	195	283	150	160	91	5,166
Percent	44.7%	26.0%	12.3%	3.8%	5.5%	2.9%	3.1%	1.8%	100.0%
Upper Division	1,455	621	253	60	62	25	67	250	2,793
Percent	52.1%	22.2%	9.1%	2.1%	2.2%	0.9%	2.4%	9.0%	100.0%
Graduate	285	34	8	1	3	1	6	13	351
Percent	81.2%	9.7%	2.3%	0.3%	0.9%	0.3%	1.7%	3.7%	100.0%
<b>Total</b>	<b>4,049</b>	<b>1,999</b>	<b>895</b>	<b>256</b>	<b>348</b>	<b>176</b>	<b>233</b>	<b>354</b>	<b>8,310</b>
Percent	48.7%	24.1%	10.8%	3.1%	4.2%	2.1%	2.8%	4.3%	100.0%
<i>2011-2012</i>									
Lower Division	2,516	1,547	672	221	246	219	163	103	5,687
Percent	44.2%	27.2%	11.8%	3.9%	4.3%	3.9%	2.9%	1.8%	100.0%
Upper Division	1,445	636	249	47	52	41	58	240	2,768
Percent	52.2%	23.0%	9.0%	1.7%	1.9%	1.5%	2.1%	8.7%	100.0%
Graduate	275	38	5	0	0	1	2	44	365
Percent	75.3%	10.4%	1.4%	0.0%	0.0%	0.3%	0.5%	12.1%	100.0%
<b>Total</b>	<b>4,236</b>	<b>2,221</b>	<b>926</b>	<b>268</b>	<b>298</b>	<b>261</b>	<b>223</b>	<b>387</b>	<b>8,820</b>
Percent	48.0%	25.2%	10.5%	3.0%	3.4%	3.0%	2.5%	4.4%	100.0%
<i>2012-2013</i>									
Lower Division	2,516	1,547	672	221	246	219	163	103	5,687
Percent	44.2%	27.2%	11.8%	3.9%	4.3%	3.9%	2.9%	1.8%	100.0%
Upper Division	1,445	636	249	47	52	41	58	240	2,768
Percent	52.2%	23.0%	9.0%	1.7%	1.9%	1.5%	2.1%	8.7%	100.0%
Graduate	275	38	5	0	0	1	2	44	365
Percent	75.3%	10.4%	1.4%	0.0%	0.0%	0.3%	0.5%	12.1%	100.0%
<b>Total</b>	<b>4,236</b>	<b>2,221</b>	<b>926</b>	<b>268</b>	<b>298</b>	<b>261</b>	<b>223</b>	<b>387</b>	<b>8,820</b>
Percent	48.0%	25.2%	10.5%	3.0%	3.4%	3.0%	2.5%	4.4%	100.0%
<i>2013-2014</i>									
Lower Division	2,869	1,555	747	231	267	199	127	96	6,091
Percent	47.1%	25.5%	12.3%	3.8%	4.4%	3.3%	2.1%	1.6%	100.0%
Upper Division	1,515	691	283	58	56	29	29	260	2,921
Percent	51.9%	23.7%	9.7%	2.0%	1.9%	1.0%	1.0%	8.9%	100.0%
Graduate	334	40	4	0	0	0	2	59	439
Percent	76.1%	9.1%	0.9%	0.0%	0.0%	0.0%	0.5%	13.4%	100.0%
<b>Total</b>	<b>4,718</b>	<b>2,286</b>	<b>1,034</b>	<b>289</b>	<b>323</b>	<b>228</b>	<b>158</b>	<b>415</b>	<b>9,451</b>
Percent	49.9%	24.2%	10.9%	3.1%	3.4%	2.4%	1.7%	4.4%	100.0%