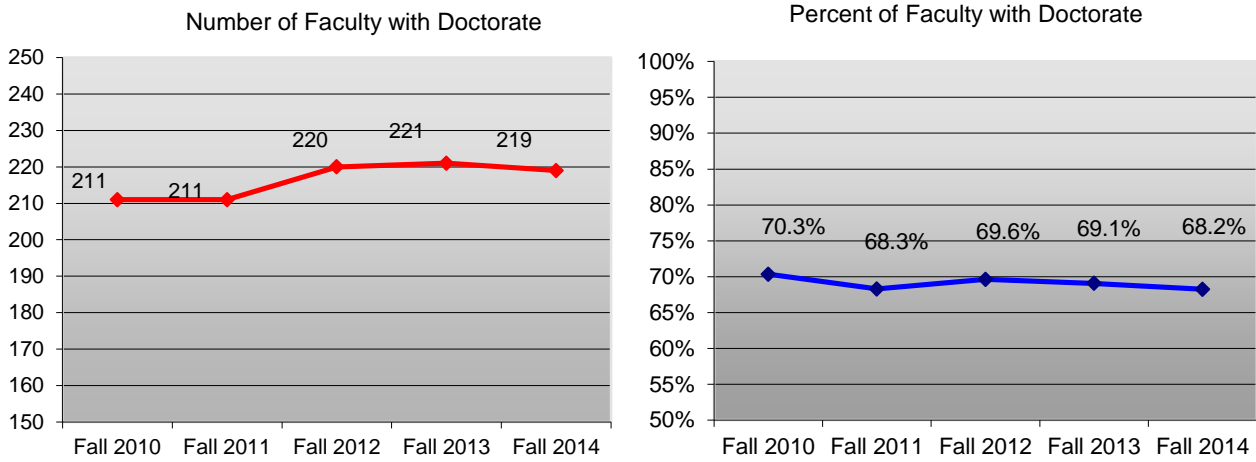


Columbus State University

Full-Time Employees With Faculty Status

2010 - 2014

Trend By Doctorate Degrees and Percent of All Full-Time Faculty



	<u>Fall 2010</u>		<u>Fall 2011</u>		<u>Fall 2012</u>		<u>Fall 2013</u>		<u>Fall 2014</u>		<u>4-Year N</u>	<u>4-Year %</u>
	% FT		% FT		% FT		% FT		% FT		Change	Change
	N	Faculty	N	Faculty	N	Faculty	N	Faculty	N	Faculty		
Total FT Faculty	300		309		316		320		321		21	7.0%
N with Doctorate	211	70.3%	211	68.3%	220	69.6%	221	69.1%	219	68.2%	8	3.8%

The numbers include instructional faculty, administrators, librarians and other professional staff with faculty status