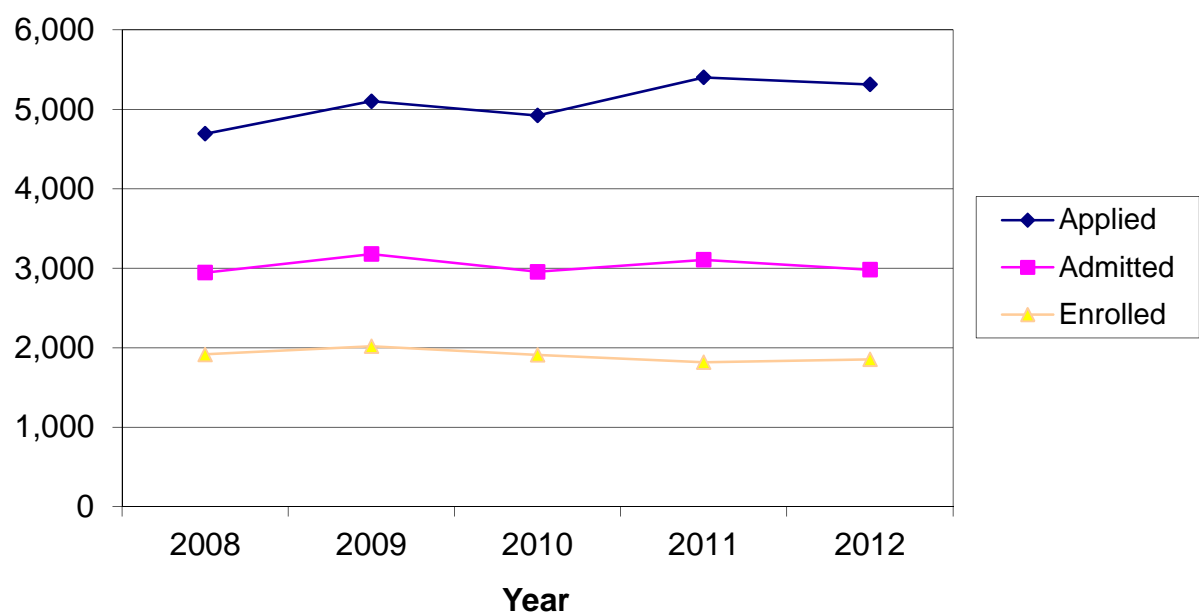


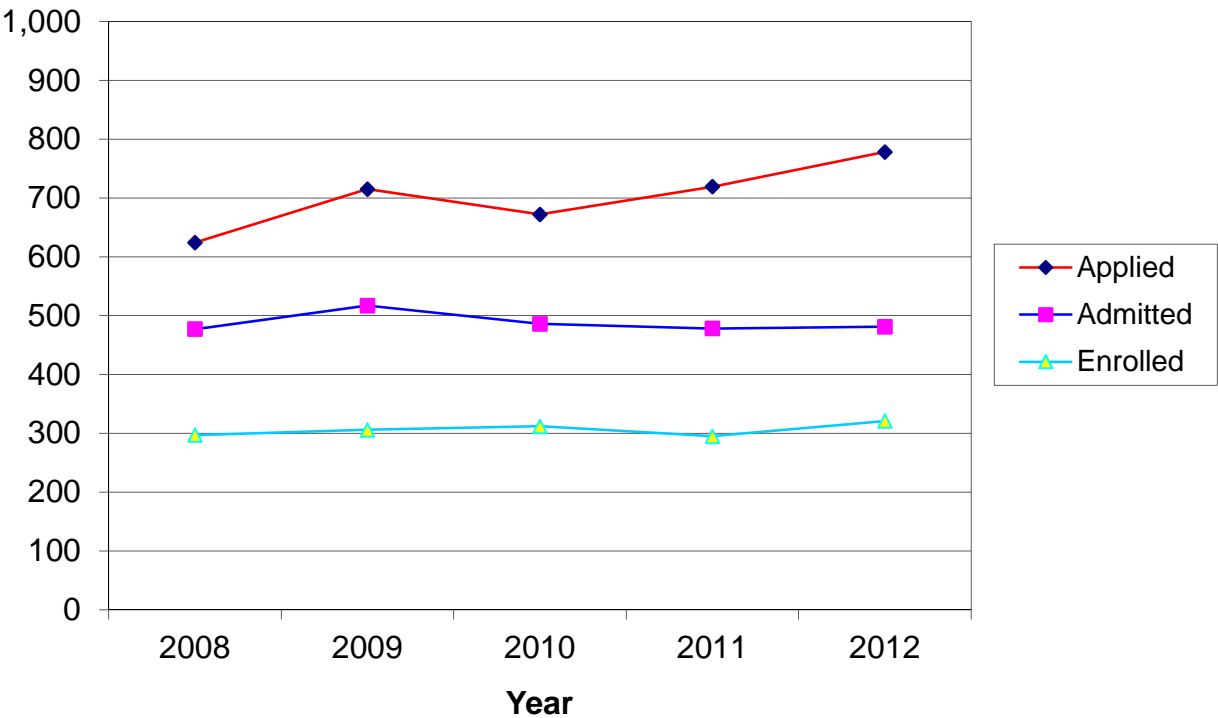
CSU Facts & Figures 2012: Applications Received

Undergraduate Applications Received



Undergraduate Applications Received							
	Fall 2008	Fall 2009	Fall 2010	Fall 2011	Fall 2012	4-Year # Change	4-Year % Change
Applied							
Entering Freshmen	3,085	3,439	3,440	3,832	3,664	579	18.8%
Transfer Students	1,434	1,539	1,364	1,442	1,463	29	2.0%
Other New Students	175	125	119	128	187	12	6.9%
Total	4,694	5,103	4,923	5,402	5,314	620	13.2%
Accepted							
Entering Freshmen	1,848	2,027	1,935	2,027	1,870	22	1.2%
Transfer Students	951	1,066	932	991	996	45	4.7%
Other New Students	148	86	89	89	116	-32	-21.6%
Total	2,947	3,179	2,956	3,107	2,982	35	1.2%
Enrolled							
Entering Freshmen	1,244	1,319	1,240	1,189	1,159	-85	-6.8%
Transfer Students	566	631	604	557	605	39	6.9%
Other New Students	107	70	68	73	91	-16	-15.0%
Total	1,917	2,020	1,912	1,819	1,855	-62	-3.2%

Graduate Applications Received



Graduate Applications Received							
	Fall 2008	Fall 2009	Fall 2010	Fall 2011	Fall 2012	4-Year # Change	4-Year % Change
Applied							
Certificate	NA	7	14	14	22		
Masters	525	602	564	587	646	121	23.0%
Specialist	95	101	59	83	60	-35	-36.8%
Doctorate	NA	NA	33	31	42		
Non-Degree	4	5	2	4	8	4	100.0%
Total	624	715	672	719	778	154	24.7%
Accepted							
Certificate	NA	6	9	12	13		
Masters	396	418	394	382	407	11	2.8%
Specialist	79	90	54	69	45	-34	-43.0%
Doctorate	NA	NA	27	13	12		
Non-Degree	2	3	2	2	4	2	100.0%
Total	477	517	486	478	481	4	0.8%
Enrolled							
Certificate	NA	6	8	11	11		
Masters	256	249	261	249	273	17	6.6%
Specialist	40	50	35	28	27	-13	-32.5%
Doctorate	NA	NA	8	7	9		
Non-Degree	1	1	0	0	1	0	0.0%
Total	297	306	312	295	321	24	8.1%