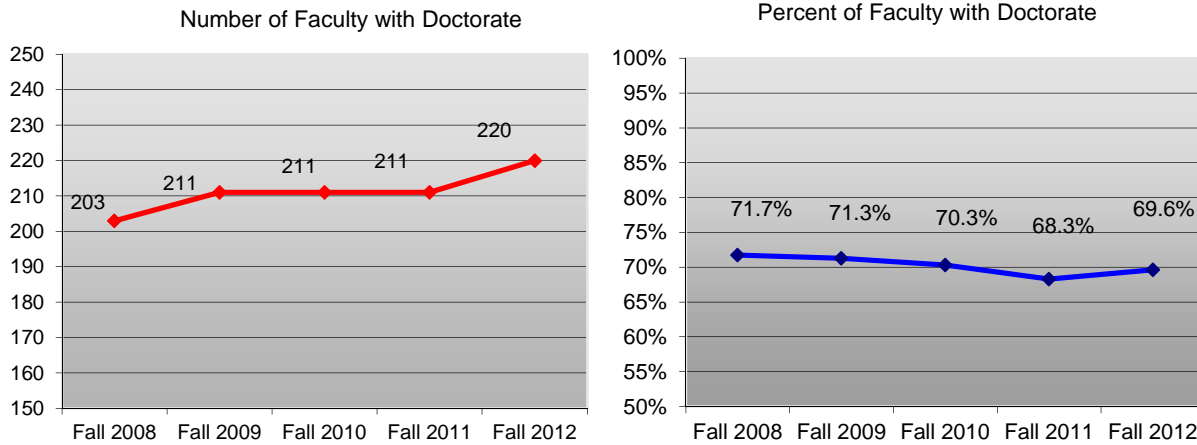


Columbus State University

Full-Time Employees With Faculty Status

2008 - 2012

Trend By Doctorate Degrees and Percent of All Full-Time Faculty



	Fall 2008		Fall 2009		Fall 2010		Fall 2011		Fall 2012		4-Year N Change	4-Year % Change
	% FT		% FT		% FT		% FT		% FT			
	N	Faculty	N	Faculty	N	Faculty	N	Faculty	N	Faculty		
Total FT Faculty	283		296		300		309		316		33	11.7%
N with Doctorate	203	71.7%	211	71.3%	211	70.3%	211	68.3%	220	69.6%	17	8.4%

The numbers include instructional faculty, administrators, librarians and other professional staff with faculty status