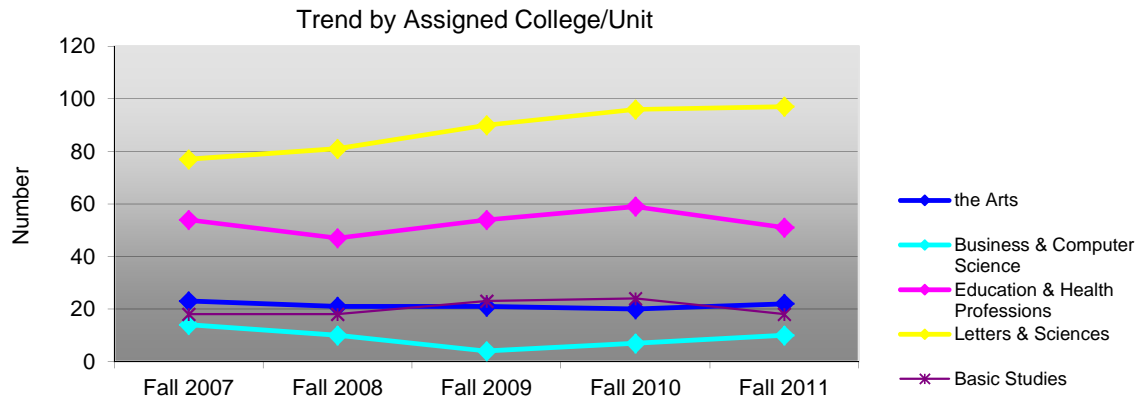


Columbus State University

Part-Time Faculty

2007 - 2011

By Assigned College/Unit and Percent of Total Part-Time Faculty



	Fall 2007		Fall 2008		Fall 2009		Fall 2010		Fall 2011		4-Year N Change	4-Year % Change
	% PT		% PT		% PT		% PT		% PT			
	N	Faculty	N	Faculty	N	Faculty	N	Faculty	N	Faculty		
Total PT Faculty	186		177		192		206		198		12	6.5%
the Arts	23	12.4%	21	11.9%	21	10.9%	20	9.7%	22	11.1%	-1	-4.3%
Business & Computer Science	14	7.5%	10	5.6%	4	2.1%	7	3.4%	10	5.1%	-4	-28.6%
Education & Health Professions	54	29.0%	47	26.6%	54	28.1%	59	28.6%	51	25.8%	-3	-5.6%
Letters & Sciences	77	41.4%	81	45.8%	90	46.9%	96	46.6%	97	49.0%	20	26.0%
Basic Studies	18	9.7%	18	10.2%	23	12.0%	24	11.7%	18	9.1%	0	0.0%

Numbers are based on part-time faculty teaching at least one class during the fall semester.

