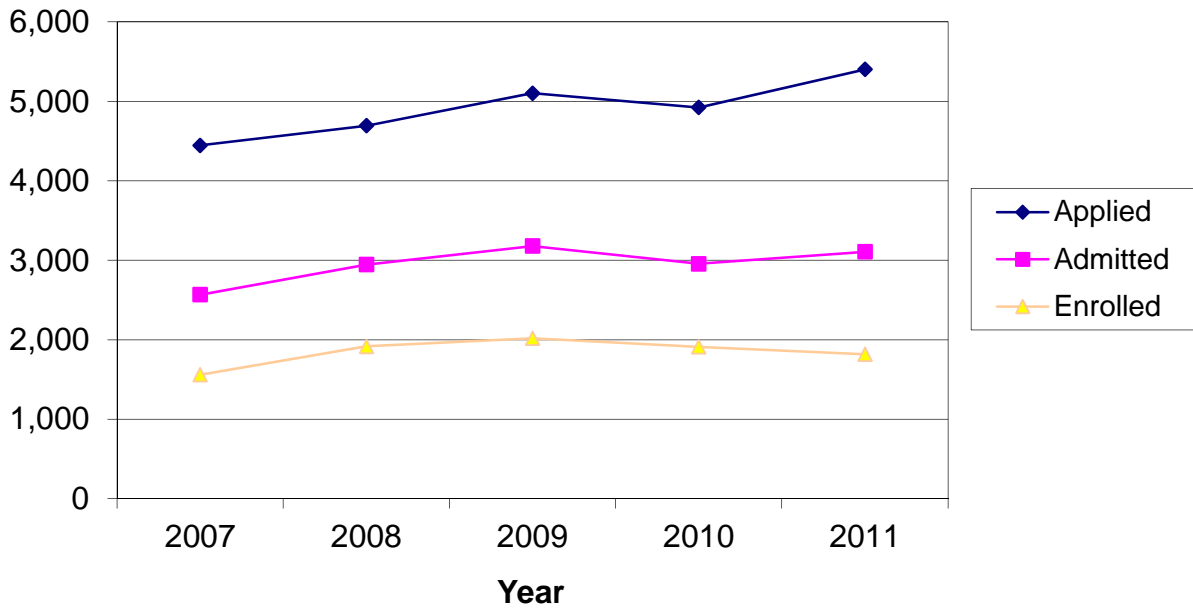


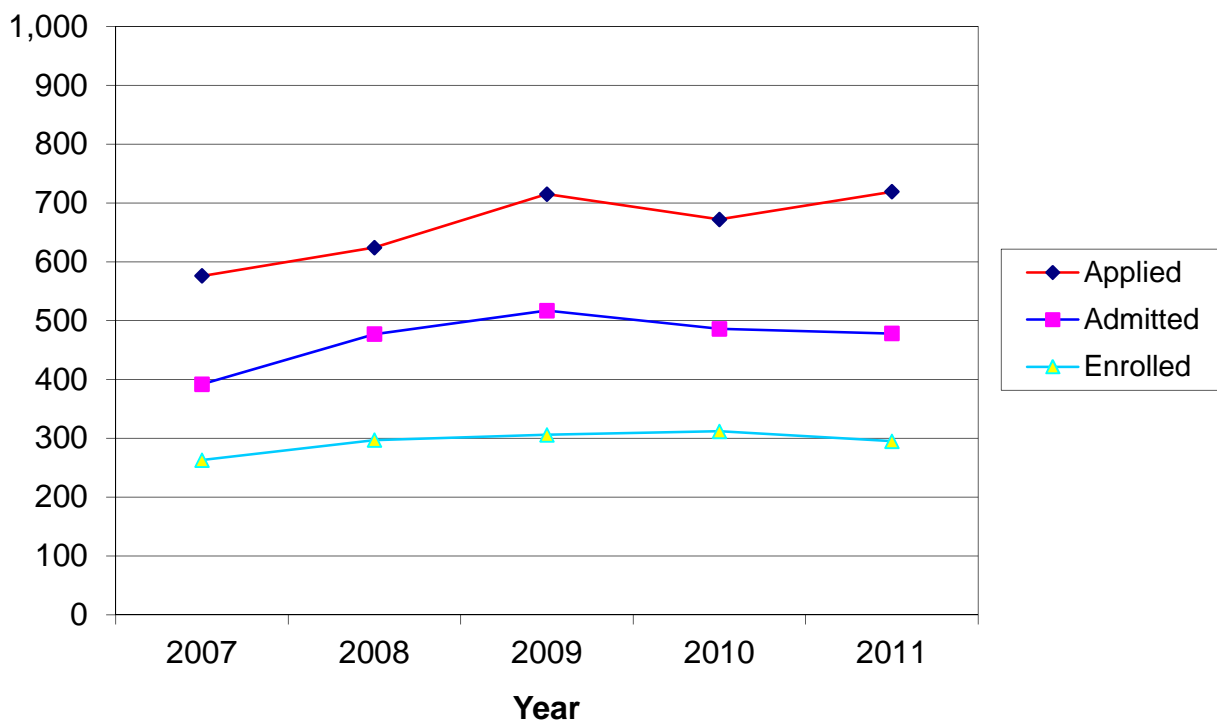
CSU Facts & Figures 2011: Applications Received

Undergraduate Applications Received



Undergraduate Applications Received							
	Fall 2007	Fall 2008	Fall 2009	Fall 2010	Fall 2011	4-Year # Change	4-Year % Change
Applied							
Entering Freshmen	3,093	3,085	3,439	3,440	3,832	739	23.9%
Transfer Students	1,282	1,434	1,539	1,364	1,442	160	12.5%
Other New Students	71	175	125	119	128	57	80.3%
<i>Total</i>	4,446	4,694	5,103	4,923	5,402	956	21.5%
Accepted							
Entering Freshmen	1,681	1,848	2,027	1,935	2,027	346	20.6%
Transfer Students	838	951	1,066	932	991	153	18.3%
Other New Students	49	148	86	89	89	40	81.6%
<i>Total</i>	2,568	2,947	3,179	2,956	3,107	539	21.0%
Enrolled							
Entering Freshmen	1,035	1,244	1,319	1,240	1,189	154	14.9%
Transfer Students	492	566	631	604	557	65	13.2%
Other New Students	35	107	70	68	73	38	108.6%
<i>Total</i>	1,562	1,917	2,020	1,912	1,819	257	16.5%

Graduate Applications Received



Graduate Applications Received							
	Fall 2007	Fall 2008	Fall 2009	Fall 2010	Fall 2011	4-Year # Change	4-Year % Change
Applied							
Certificate	NA	NA	7	14	14		
Masters	477	525	602	564	587	110	23.1%
Specialist	92	95	101	59	83	-9	-9.8%
Doctorate	NA	NA	NA	33	31		
Non-Degree	7	4	5	2	4	-3	-42.9%
<i>Total</i>	576	624	715	672	719	143	24.8%
Accepted							
Certificate	NA	NA	6	9	12		
Masters	308	396	418	394	382	74	24.0%
Specialist	78	79	90	54	69	-9	-11.5%
Doctorate	NA	NA	NA	27	13		
Non-Degree	6	2	3	2	2	-4	-66.7%
<i>Total</i>	392	477	517	486	478	86	21.9%
Enrolled							
Certificate	NA	NA	6	8	11		
Masters	204	256	249	261	249	45	22.1%
Specialist	53	40	50	35	28	-25	-47.2%
Doctorate	NA	NA	NA	8	7		
Non-Degree	6	1	1	0	0	-6	-100.0%
<i>Total</i>	263	297	306	312	295	32	12.2%