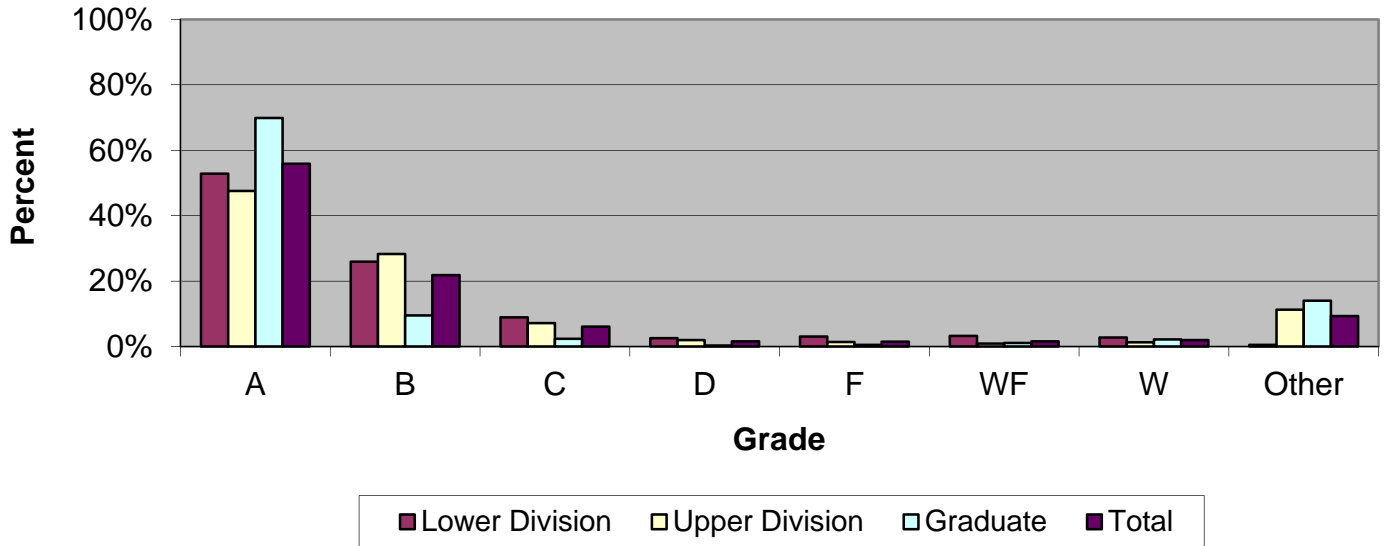


CSU Facts & Figures 2011: Grade Distribution

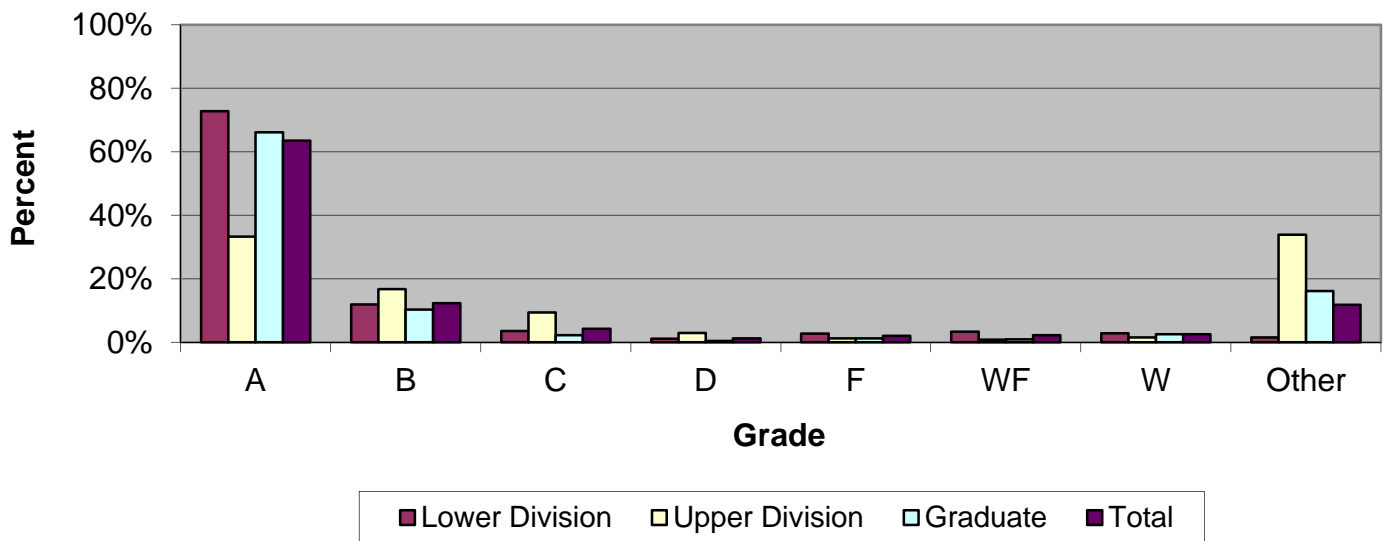
Grade Distribution of Full-Time Faculty for 2010-11 College of Education & Health Professions



Grade Distribution by Level of Instruction - College of Education & Health Professions

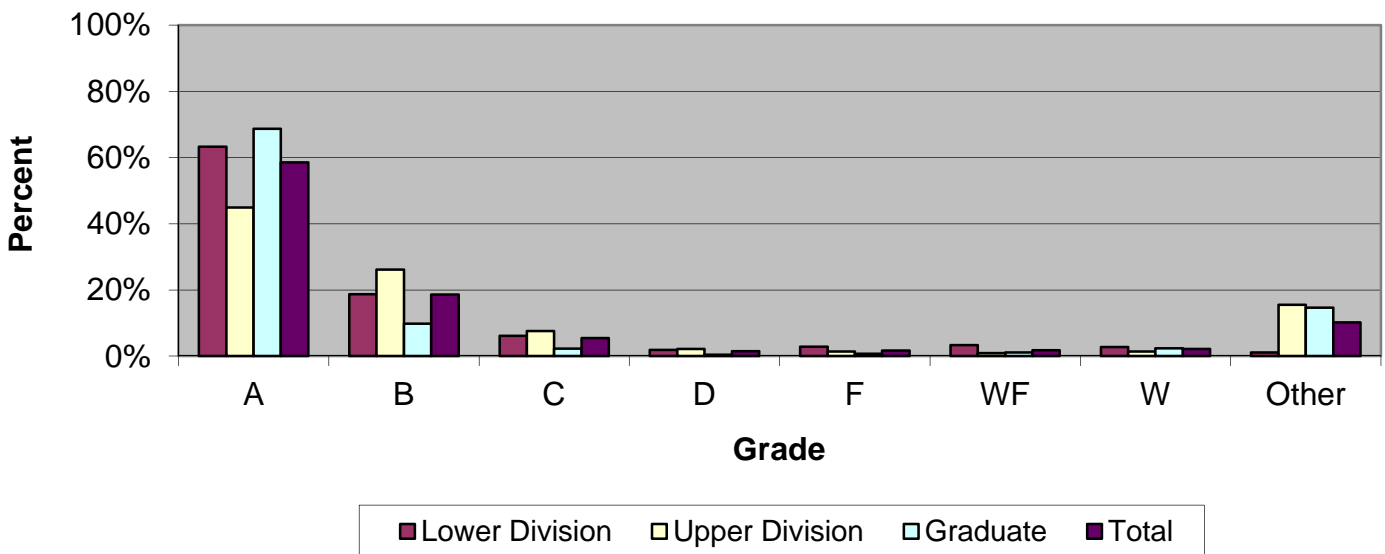
Full-Time Faculty	A's	B's	C's	D's	F's	WF's	W's	Other	Total
<i>2007-2008</i>									
Lower Division	1,544	580	194	44	51	97	123	5	2,638
Percent	58.5%	22.0%	7.4%	1.7%	1.9%	3.7%	4.7%	0.2%	100.0%
Upper Division	1,516	1,187	314	71	35	25	43	359	3,550
Percent	42.7%	33.4%	8.8%	2.0%	1.0%	0.7%	1.2%	10.1%	100.0%
Graduate	1,668	230	30	4	31	18	52	551	2,584
Percent	64.6%	8.9%	1.2%	0.2%	1.2%	0.7%	2.0%	21.3%	100.0%
Total	4,728	1,997	538	119	117	140	218	915	8,772
Percent	53.9%	22.8%	6.1%	1.4%	1.3%	1.6%	2.5%	10.4%	100.0%
<i>2008-2009</i>									
Lower Division	1,174	586	215	72	42	74	66	31	2,260
Percent	51.9%	25.9%	9.5%	3.2%	1.9%	3.3%	2.9%	1.4%	100.0%
Upper Division	1,564	1,319	338	72	35	23	45	374	3,770
Percent	41.5%	35.0%	9.0%	1.9%	0.9%	0.6%	1.2%	9.9%	100.0%
Graduate	1,945	294	57	0	15	27	74	375	2,787
Percent	69.8%	10.5%	2.0%	0.0%	0.5%	1.0%	2.7%	13.5%	100.0%
Total	4,683	2,199	610	144	92	124	185	780	8,817
Percent	53.1%	24.9%	6.9%	1.6%	1.0%	1.4%	2.1%	8.8%	100.0%
<i>2009-2010</i>									
Lower Division	1,314	693	257	71	56	57	97	16	2,561
Percent	51.3%	27.1%	10.0%	2.8%	2.2%	2.2%	3.8%	0.6%	100.0%
Upper Division	1,659	1,315	329	76	38	32	35	418	3,902
Percent	42.5%	33.7%	8.4%	1.9%	1.0%	0.8%	0.9%	10.7%	100.0%
Graduate	2,272	291	61	10	15	43	102	479	3,273
Percent	69.4%	8.9%	1.9%	0.3%	0.5%	1.3%	3.1%	14.6%	100.0%
Total	5,245	2,299	647	157	109	132	234	913	9,736
Percent	53.9%	23.6%	6.6%	1.6%	1.1%	1.4%	2.4%	9.4%	100.0%
<i>2010-2011</i>									
Lower Division	1,171	575	199	58	68	72	61	12	2,216
Percent	52.8%	25.9%	9.0%	2.6%	3.1%	3.2%	2.8%	0.5%	100.0%
Upper Division	1,774	1,057	267	74	52	36	49	421	3,730
Percent	47.6%	28.3%	7.2%	2.0%	1.4%	1.0%	1.3%	11.3%	100.0%
Graduate	1,879	256	63	10	14	31	59	376	2,688
Percent	69.9%	9.5%	2.3%	0.4%	0.5%	1.2%	2.2%	14.0%	100.0%
Total	4,824	1,888	529	142	134	139	169	809	8,634
Percent	55.9%	21.9%	6.1%	1.6%	1.6%	1.6%	2.0%	9.4%	100.0%

Grade Distribution of Part-Time Faculty for 2010-11
College of Education & Health Professions



Grade Distribution by Level of Instruction - College of Education & Health Professions									
Part-Time Faculty	A's	B's	C's	D's	F's	WF's	W's	Other	Total
<i>2007-2008</i>									
Lower Division	1,295	251	64	28	52	75	70	25	1,860
Percent	69.6%	13.5%	3.4%	1.5%	2.8%	4.0%	3.8%	1.3%	100.0%
Upper Division	229	85	50	7	1	0	16	458	846
Percent	27.1%	10.0%	5.9%	0.8%	0.1%	0.0%	1.9%	54.1%	100.0%
Graduate	775	70	2	0	5	6	21	119	998
Percent	77.7%	7.0%	0.2%	0.0%	0.5%	0.6%	2.1%	11.9%	100.0%
Total	2,299	406	116	35	58	81	107	602	3,704
Percent	62.1%	11.0%	3.1%	0.9%	1.6%	2.2%	2.9%	16.3%	100.0%
<i>2008-2009</i>									
Lower Division	1,694	223	76	21	44	65	98	4	2,225
Percent	76.1%	10.0%	3.4%	0.9%	2.0%	2.9%	4.4%	0.2%	100.0%
Upper Division	105	66	28	3	3	1	7	332	545
Percent	19.3%	12.1%	5.1%	0.6%	0.6%	0.2%	1.3%	60.9%	100.0%
Graduate	817	42	8	1	8	9	22	88	995
Percent	82.1%	4.2%	0.8%	0.1%	0.8%	0.9%	2.2%	8.8%	100.0%
Total	2,616	331	112	25	55	75	127	424	3,765
Percent	69.5%	8.8%	3.0%	0.7%	1.5%	2.0%	3.4%	11.3%	100.0%
<i>2009-2010</i>									
Lower Division	1,849	283	112	38	61	81	129	38	2,591
Percent	71.4%	10.9%	4.3%	1.5%	2.4%	3.1%	5.0%	1.5%	100.0%
Upper Division	264	72	33	8	5	3	6	286	677
Percent	39.0%	10.6%	4.9%	1.2%	0.7%	0.4%	0.9%	42.2%	100.0%
Graduate	681	128	22	2	5	11	33	110	992
Percent	68.6%	12.9%	2.2%	0.2%	0.5%	1.1%	3.3%	11.1%	100.0%
Total	2,794	483	167	48	71	95	168	434	4,260
Percent	65.6%	11.3%	3.9%	1.1%	1.7%	2.2%	3.9%	10.2%	100.0%
<i>2010-2011</i>									
Lower Division	1,754	288	87	28	66	81	68	38	2,410
Percent	72.8%	12.0%	3.6%	1.2%	2.7%	3.4%	2.8%	1.6%	100.0%
Upper Division	286	144	81	25	11	7	13	291	858
Percent	33.3%	16.8%	9.4%	2.9%	1.3%	0.8%	1.5%	33.9%	100.0%
Graduate	870	135	29	6	16	13	34	212	1,315
Percent	66.2%	10.3%	2.2%	0.5%	1.2%	1.0%	2.6%	16.1%	100.0%
Total	2,910	567	197	59	93	101	115	541	4,583
Percent	63.5%	12.4%	4.3%	1.3%	2.0%	2.2%	2.5%	11.8%	100.0%

Grade Distribution of All Faculty for 2010-11
College of Education & Health Professions



Grade Distribution by Level of Instruction - College of Education & Health Professions									
All Faculty	A's	B's	C's	D's	F's	WF's	W's	Other	Total
<i>2007-2008</i>									
Lower Division	2,839	831	258	72	103	172	193	30	4,498
Percent	63.1%	18.5%	5.7%	1.6%	2.3%	3.8%	4.3%	0.7%	100.0%
Upper Division	1,745	1,272	364	78	36	25	59	817	4,396
Percent	39.7%	28.9%	8.3%	1.8%	0.8%	0.6%	1.3%	18.6%	100.0%
Graduate	2,443	300	32	4	36	24	73	670	3,582
Percent	68.2%	8.4%	0.9%	0.1%	1.0%	0.7%	2.0%	18.7%	100.0%
Total	7,027	2,403	654	154	175	221	325	1,517	12,476
Percent	56.3%	19.3%	5.2%	1.2%	1.4%	1.8%	2.6%	12.2%	100.0%
<i>2008-2009</i>									
Lower Division	2,868	809	291	93	86	139	164	35	4,485
Percent	63.9%	18.0%	6.5%	2.1%	1.9%	3.1%	3.7%	0.8%	100.0%
Upper Division	1,669	1,385	366	75	38	24	52	706	4,315
Percent	38.7%	32.1%	8.5%	1.7%	0.9%	0.6%	1.2%	16.4%	100.0%
Graduate	2,762	336	65	1	23	36	96	463	3,782
Percent	73.0%	8.9%	1.7%	0.0%	0.6%	1.0%	2.5%	12.2%	100.0%
Total	7,299	2,530	722	169	147	199	312	1,204	12,582
Percent	58.0%	20.1%	5.7%	1.3%	1.2%	1.6%	2.5%	9.6%	100.0%
<i>2009-2010</i>									
Lower Division	3,163	976	369	109	117	138	226	54	5,152
Percent	61.4%	18.9%	7.2%	2.1%	2.3%	2.7%	4.4%	1.0%	100.0%
Upper Division	1,923	1,387	362	84	43	35	41	704	4,579
Percent	42.0%	30.3%	7.9%	1.8%	0.9%	0.8%	0.9%	15.4%	100.0%
Graduate	2,953	419	83	12	20	54	135	589	4,265
Percent	69.2%	9.8%	1.9%	0.3%	0.5%	1.3%	3.2%	13.8%	100.0%
Total	8,039	2,782	814	205	180	227	402	1,347	13,996
Percent	57.4%	19.9%	5.8%	1.5%	1.3%	1.6%	2.9%	9.6%	100.0%
<i>2010-2011</i>									
Lower Division	2,925	863	286	86	134	153	129	50	4,626
Percent	63.2%	18.7%	6.2%	1.9%	2.9%	3.3%	2.8%	1.1%	100.0%
Upper Division	2,060	1,201	348	99	63	43	62	712	4,588
Percent	44.9%	26.2%	7.6%	2.2%	1.4%	0.9%	1.4%	15.5%	100.0%
Graduate	2,749	391	92	16	30	44	93	588	4,003
Percent	68.7%	9.8%	2.3%	0.4%	0.7%	1.1%	2.3%	14.7%	100.0%
Total	7,734	2,455	726	201	227	240	284	1,350	13,217
Percent	58.5%	18.6%	5.5%	1.5%	1.7%	1.8%	2.1%	10.2%	100.0%