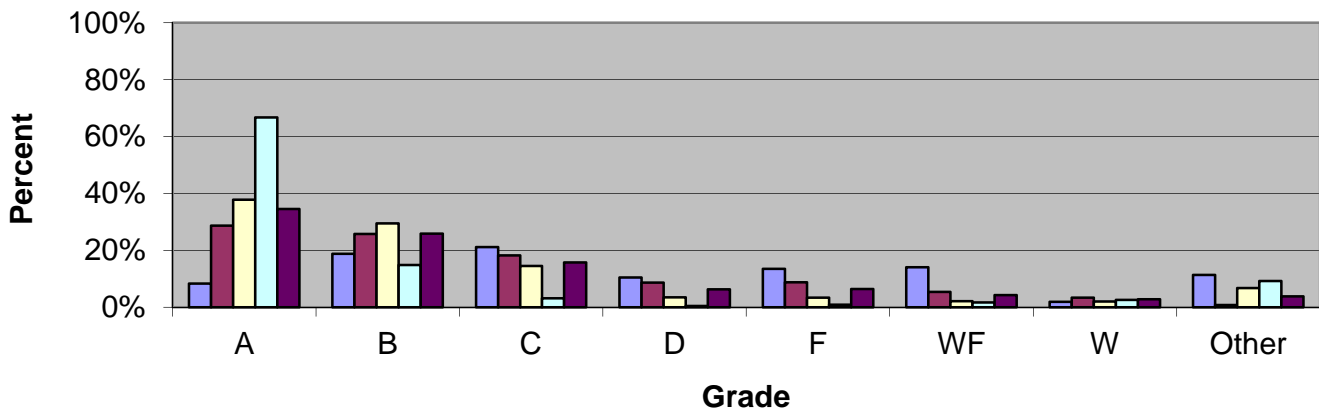


CSU Facts & Figures 2011: Grade Distribution

Grade Distribution of Full-Time Faculty for 2010-11

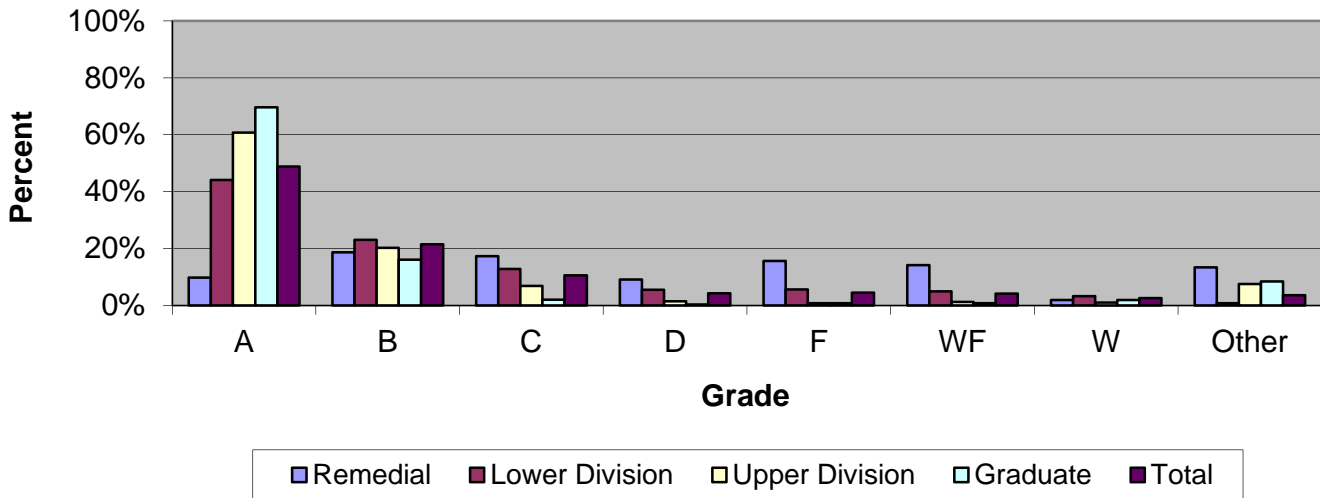


■ Remedial
 ■ Lower Division
 ■ Upper Division
 ■ Graduate
 ■ Total

Grade Distribution by Level of Instruction									
Full-Time Faculty	A's	B's	C's	D's	F's	WF's	W's	Other	Total
<i>2007-2008</i>									
Remedial	102	233	214	129	195	150	34	189	1,246
Percent	8.2%	18.7%	17.2%	10.4%	15.7%	12.0%	2.7%	15.2%	100.0%
Lower Division	7,203	6,525	4,570	2,022	1,569	1,231	1,235	36	24,391
Percent	29.5%	26.8%	18.7%	8.3%	6.4%	5.0%	5.1%	0.1%	100.0%
Upper Division	5,664	5,186	2,812	650	447	326	524	586	16,195
Percent	35.0%	32.0%	17.4%	4.0%	2.8%	2.0%	3.2%	3.6%	100.0%
Graduate	2,556	587	118	16	76	55	110	567	4,085
Percent	62.6%	14.4%	2.9%	0.4%	1.9%	1.3%	2.7%	13.9%	100.0%
<i>Total</i>	15,525	12,531	7,714	2,817	2,287	1,762	1,903	1,378	45,917
Percent	33.8%	27.3%	16.8%	6.1%	5.0%	3.8%	4.1%	3.0%	100.0%
<i>2008-2009</i>									
Remedial	109	237	264	189	239	173	34	186	1,431
Percent	7.6%	16.6%	18.4%	13.2%	16.7%	12.1%	2.4%	13.0%	100.0%
Lower Division	7,366	6,655	4,979	2,284	2,049	1,299	1,299	99	26,030
Percent	28.3%	25.6%	19.1%	8.8%	7.9%	5.0%	5.0%	0.4%	100.0%
Upper Division	6,128	5,660	2,952	659	473	326	484	649	17,331
Percent	35.4%	32.7%	17.0%	3.8%	2.7%	1.9%	2.8%	3.7%	100.0%
Graduate	2,946	692	146	13	46	70	165	382	4,460
Percent	66.1%	15.5%	3.3%	0.3%	1.0%	1.6%	3.7%	8.6%	100.0%
<i>Total</i>	16,549	13,244	8,341	3,145	2,807	1,868	1,982	1,316	49,252
Percent	33.6%	26.9%	16.9%	6.4%	5.7%	3.8%	4.0%	2.7%	100.0%
<i>2009-2010</i>									
Remedial	100	303	342	160	253	179	50	254	1,641
Percent	6.1%	18.5%	20.8%	9.8%	15.4%	10.9%	3.0%	15.5%	100.0%
Lower Division	8,177	7,018	5,110	2,287	2,076	1,259	1,249	155	27,331
Percent	29.9%	25.7%	18.7%	8.4%	7.6%	4.6%	4.6%	0.6%	100.0%
Upper Division	6,655	5,258	2,658	692	475	343	471	909	17,461
Percent	38.1%	30.1%	15.2%	4.0%	2.7%	2.0%	2.7%	5.2%	100.0%

Graduate	3,227	736	152	24	28	83	180	512	4,942
Percent	65.3%	14.9%	3.1%	0.5%	0.6%	1.7%	3.6%	10.4%	100.0%
Total	18,159	13,315	8,262	3,163	2,832	1,864	1,950	1,830	51,375
Percent	35.3%	25.9%	16.1%	6.2%	5.5%	3.6%	3.8%	3.6%	100.0%
2010-2011									
Remedial	123	276	310	154	199	206	29	167	1,464
Percent	8.4%	18.9%	21.2%	10.5%	13.6%	14.1%	2.0%	11.4%	100.0%
Lower Division	8,127	7,285	5,159	2,447	2,478	1,535	972	244	28,247
Percent	28.8%	25.8%	18.3%	8.7%	8.8%	5.4%	3.4%	0.9%	100.0%
Upper Division	6,431	5,009	2,470	606	584	372	357	1,147	16,976
Percent	37.9%	29.5%	14.5%	3.6%	3.4%	2.2%	2.1%	6.8%	100.0%
Graduate	2,988	667	145	23	43	78	119	416	4,479
Percent	66.7%	14.9%	3.2%	0.5%	1.0%	1.7%	2.7%	9.3%	100.0%
Total	17,669	13,237	8,084	3,230	3,304	2,191	1,477	1,974	51,166
Percent	34.5%	25.9%	15.8%	6.3%	6.5%	4.3%	2.9%	3.9%	100.0%

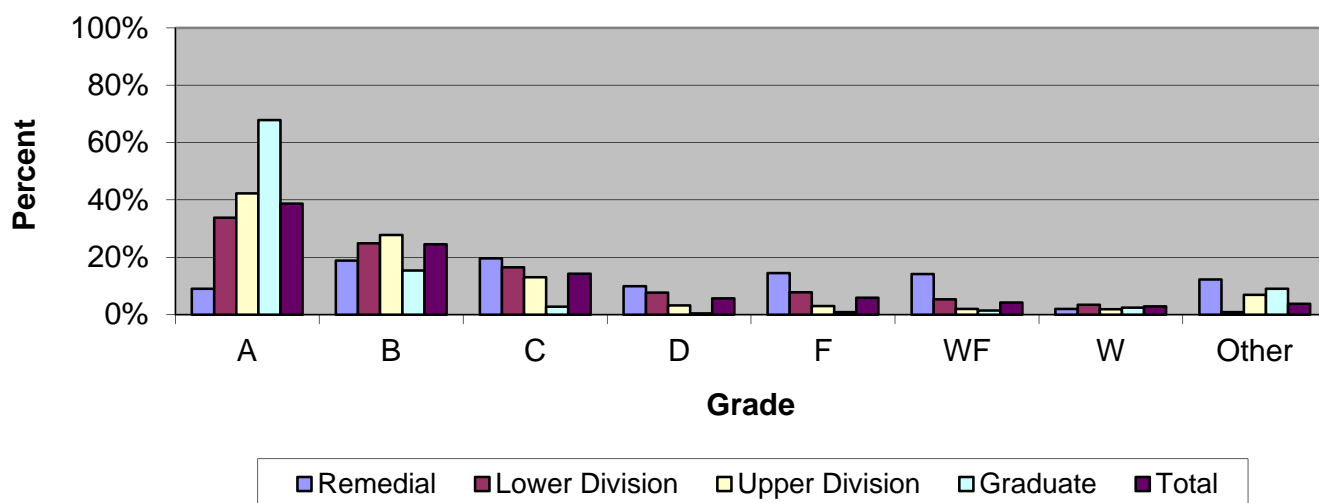
Grade Distribution of Part-Time Faculty for 2010-11



Grade Distribution by Level of Instruction									
Part-Time Faculty	A's	B's	C's	D's	F's	WF's	W's	Other	Total
<i>2007-2008</i>									
Remedial	98	164	117	70	86	98	38	453	1,124
Percent	8.7%	14.6%	10.4%	6.2%	7.7%	8.7%	3.4%	40.3%	100.0%
Lower Division	5,304	3,354	2,034	791	846	730	997	60	14,116
Percent	37.6%	23.8%	14.4%	5.6%	6.0%	5.2%	7.1%	0.4%	100.0%
Upper Division	2,148	695	224	29	30	23	50	464	3,663
Percent	58.6%	19.0%	6.1%	0.8%	0.8%	0.6%	1.4%	12.7%	100.0%
Graduate	1,678	466	30	1	13	18	39	120	2,365
Percent	71.0%	19.7%	1.3%	0.0%	0.5%	0.8%	1.6%	5.1%	100.0%
Total	9,228	4,679	2,405	891	975	869	1,124	1,097	21,268
Percent	43.4%	22.0%	11.3%	4.2%	4.6%	4.1%	5.3%	5.2%	100.0%
<i>2008-2009</i>									
Remedial	94	189	164	105	110	124	30	567	1,383
Percent	6.8%	13.7%	11.9%	7.6%	8.0%	9.0%	2.2%	41.0%	100.0%
Lower Division	5,331	2,992	1,840	786	815	754	795	20	13,333
Percent	40.0%	22.4%	13.8%	5.9%	6.1%	5.7%	6.0%	0.2%	100.0%
Upper Division	1,867	597	172	20	31	16	43	338	3,084
Percent	60.5%	19.4%	5.6%	0.6%	1.0%	0.5%	1.4%	11.0%	100.0%
Graduate	1,695	391	34	1	21	20	39	88	2,289
Percent	74.0%	17.1%	1.5%	0.0%	0.9%	0.9%	1.7%	3.8%	100.0%
Total	8,987	4,169	2,210	912	977	914	907	1,013	20,089
Percent	44.7%	20.8%	11.0%	4.5%	4.9%	4.5%	4.5%	5.0%	100.0%
<i>2009-2010</i>									
Remedial	98	185	176	86	158	107	59	790	1,659
Percent	5.9%	11.2%	10.6%	5.2%	9.5%	6.4%	3.6%	47.6%	100.0%
Lower Division	6,448	3,148	1,623	698	690	647	682	104	14,040
Percent	45.9%	22.4%	11.6%	5.0%	4.9%	4.6%	4.9%	0.7%	100.0%
Upper Division	2,237	625	159	22	20	16	36	289	3,404
Percent	65.7%	18.4%	4.7%	0.6%	0.6%	0.5%	1.1%	8.5%	100.0%
Graduate	1,650	478	49	6	10	26	63	116	2,398

Percent	68.8%	19.9%	2.0%	0.3%	0.4%	1.1%	2.6%	4.8%	100.0%
Total	10,433	4,436	2,007	812	878	796	840	1,299	21,501
Percent	48.5%	20.6%	9.3%	3.8%	4.1%	3.7%	3.9%	6.0%	100.0%
2010-2011									
Remedial	101	193	179	94	161	146	20	138	1,032
Percent	9.8%	18.7%	17.3%	9.1%	15.6%	14.1%	1.9%	13.4%	100.0%
Lower Division	6,042	3,161	1,756	752	764	676	454	103	13,708
Percent	44.1%	23.1%	12.8%	5.5%	5.6%	4.9%	3.3%	0.8%	100.0%
Upper Division	2,465	822	280	61	33	49	41	305	4,056
Percent	60.8%	20.3%	6.9%	1.5%	0.8%	1.2%	1.0%	7.5%	100.0%
Graduate	1,895	439	55	8	21	23	52	229	2,722
Percent	69.6%	16.1%	2.0%	0.3%	0.8%	0.8%	1.9%	8.4%	100.0%
Total	10,503	4,615	2,270	915	979	894	567	775	21,518
Percent	48.8%	21.4%	10.5%	4.3%	4.5%	4.2%	2.6%	3.6%	100.0%

Grade Distribution of All Faculty for 2010-11



Grade Distribution by Level of Instruction									
All Faculty	A's	B's	C's	D's	F's	WF's	W's	Other	Total
<i>2007-2008</i>									
Remedial	200	397	331	199	281	248	72	642	2,370
Percent	8.4%	16.8%	14.0%	8.4%	11.9%	10.5%	3.0%	27.1%	100.0%
Lower Division	12,507	9,879	6,604	2,813	2,415	1,961	2,232	96	38,507
Percent	32.5%	25.7%	17.2%	7.3%	6.3%	5.1%	5.8%	0.2%	100.0%
Upper Division	7,812	5,881	3,036	679	477	349	574	1,050	19,858
Percent	39.3%	29.6%	15.3%	3.4%	2.4%	1.8%	2.9%	5.3%	100.0%
Graduate	4,234	1,053	148	17	89	73	149	687	6,450
Percent	65.6%	16.3%	2.3%	0.3%	1.4%	1.1%	2.3%	10.7%	100.0%
Total	24,753	17,210	10,119	3,708	3,262	2,631	3,027	2,475	67,185
Percent	36.8%	25.6%	15.1%	5.5%	4.9%	3.9%	4.5%	3.7%	100.0%
<i>2008-2009</i>									
Remedial	203	426	428	294	349	297	64	753	2,814
Percent	7.2%	15.1%	15.2%	10.4%	12.4%	10.6%	2.3%	26.8%	100.0%
Lower Division	12,697	9,647	6,819	3,070	2,864	2,053	2,094	119	39,363
Percent	32.3%	24.5%	17.3%	7.8%	7.3%	5.2%	5.3%	0.3%	100.0%
Upper Division	7,995	6,257	3,124	679	504	342	527	987	20,415
Percent	39.2%	30.6%	15.3%	3.3%	2.5%	1.7%	2.6%	4.8%	100.0%
Graduate	4,641	1,083	180	14	67	90	204	470	6,749
Percent	68.8%	16.0%	2.7%	0.2%	1.0%	1.3%	3.0%	7.0%	100.0%
Total	25,536	17,413	10,551	4,057	3,784	2,782	2,889	2,329	69,341
Percent	36.8%	25.1%	15.2%	5.9%	5.5%	4.0%	4.2%	3.4%	100.0%
<i>2009-2010</i>									
Remedial	198	488	518	246	411	286	109	1,044	3,300
Percent	6.0%	14.8%	15.7%	7.5%	12.5%	8.7%	3.3%	31.6%	100.0%
Lower Division	14,625	10,166	6,733	2,985	2,766	1,906	1,931	259	41,371
Percent	35.4%	24.6%	16.3%	7.2%	6.7%	4.6%	4.7%	0.6%	100.0%
Upper Division	8,892	5,883	2,817	714	495	359	507	1,198	20,865
Percent	42.6%	28.2%	13.5%	3.4%	2.4%	1.7%	2.4%	5.7%	100.0%
Graduate	4,877	1,214	201	30	38	109	243	628	7,340

Percent	66.4%	16.5%	2.7%	0.4%	0.5%	1.5%	3.3%	8.6%	100.0%
Total	28,592	17,751	10,269	3,975	3,710	2,660	2,790	3,129	72,876
Percent	39.2%	24.4%	14.1%	5.5%	5.1%	3.7%	3.8%	4.3%	100.0%
2010-2011									
Remedial	224	469	489	248	360	352	49	305	2,496
Percent	9.0%	18.8%	19.6%	9.9%	14.4%	14.1%	2.0%	12.2%	100.0%
Lower Division	14,169	10,446	6,915	3,199	3,242	2,211	1,426	347	41,955
Percent	33.8%	24.9%	16.5%	7.6%	7.7%	5.3%	3.4%	0.8%	100.0%
Upper Division	8,896	5,831	2,750	667	617	421	398	1,452	21,032
Percent	42.3%	27.7%	13.1%	3.2%	2.9%	2.0%	1.9%	6.9%	100.0%
Graduate	4,883	1,106	200	31	64	101	171	645	7,201
Percent	67.8%	15.4%	2.8%	0.4%	0.9%	1.4%	2.4%	9.0%	100.0%
Total	28,172	17,852	10,354	4,145	4,283	3,085	2,044	2,749	72,684
Percent	38.8%	24.6%	14.2%	5.7%	5.9%	4.2%	2.8%	3.8%	100.0%