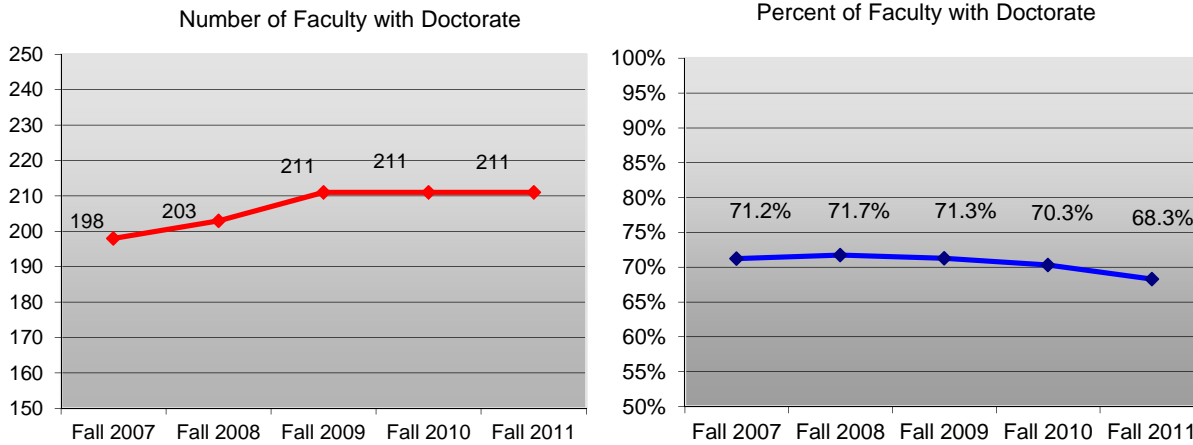


Columbus State University

Full-Time Employees With Faculty Status

2007 - 2011

Trend By Doctorate Degrees and Percent of All Full-Time Faculty



	<u>Fall 2007</u>		<u>Fall 2008</u>		<u>Fall 2009</u>		<u>Fall 2010</u>		<u>Fall 2011</u>		<u>4-Year N</u>	<u>4-Year %</u>
	% FT		% FT		% FT		% FT		% FT		Change	Change
	N	Faculty	N	Faculty	N	Faculty	N	Faculty	N	Faculty		
Total FT Faculty	278		283		296		300		309		31	11.2%
N with Doctorate	198	71.2%	203	71.7%	211	71.3%	211	70.3%	211	68.3%	13	6.6%

The numbers include instructional faculty, administrators, librarians and other professional staff with faculty sta