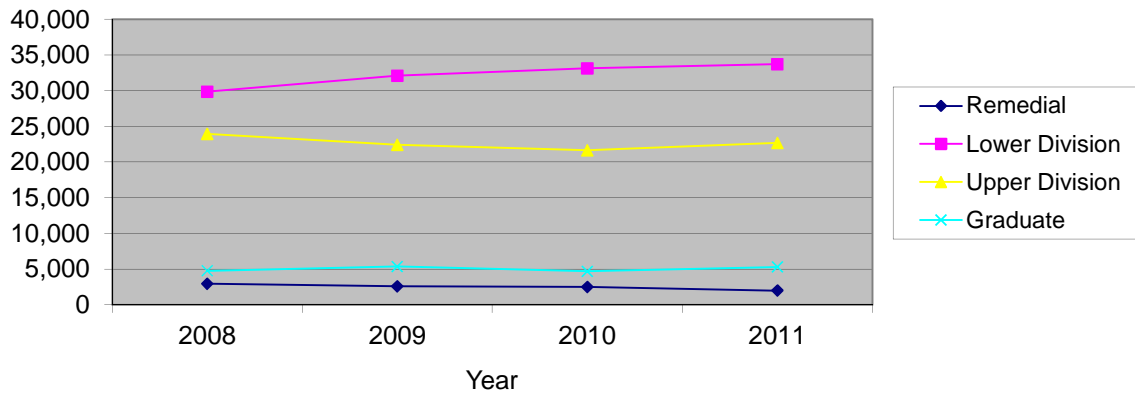


## CSU Facts & Figures 2011: Credit Hours Taught

Credit Hours Taught: Full-Time Faculty

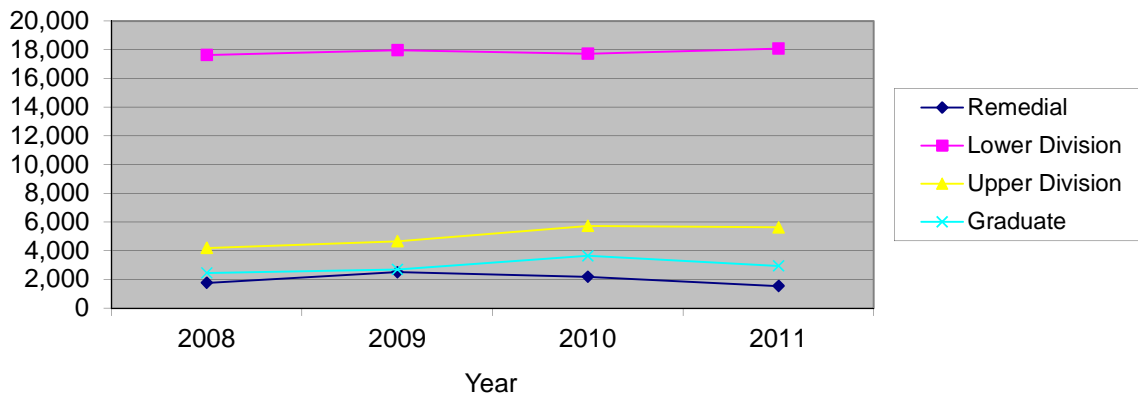


**Credit Hours Taught by College and Level of Instruction**

Full-Time Faculty	Fall 2008		Fall 2009		Fall 2010		Fall 2011	
	# Sections	SCH	# Sections	SCH	# Sections	SCH	# Sections	SCH
<i>the Arts</i>								
Lower Division	106	3,037	114	3,368	111	3,450	110	3,131
Upper Division	161	2,621	173	2,678	163	2,505	188	2,748
Graduate	23	87	40	161	43	183	68	364
<i>College Total</i>	290	5,745	327	6,207	317	6,138	366	6,243
<i>% of Univ Total</i>	24.1%	9.3%	25.5%	9.9%	25.7%	9.9%	28.9%	9.8%
<i>Business &amp; Computer Science</i>								
Lower Division	34	4,605	45	4,852	41	4,395	33	4,108
Upper Division	90	7,049	92	6,320	96	5,952	90	5,538
Graduate	21	990	28	966	29	924	28	1,182
<i>College Total</i>	145	12,644	165	12,138	166	11,271	151	10,828
<i>% of Univ Total</i>	12.0%	20.5%	12.9%	19.4%	13.5%	18.2%	11.9%	17.0%
<i>Education &amp; Health Professions</i>								
Lower Division	38	2,461	45	2,784	35	2,150	35	2,295
Upper Division	104	6,382	96	6,199	92	5,888	86	6,115
Graduate	77	2,611	86	3,239	81	2,698	90	3,026
<i>College Total</i>	219	11,454	227	12,222	208	10,736	211	11,436
<i>% of Univ Total</i>	18.2%	18.6%	17.7%	19.5%	16.9%	17.3%	16.6%	17.9%
<i>Letters &amp; Sciences</i>								
Remedial	2	66	1	50	0	0	0	0
Lower Division	223	19,087	265	20,560	254	22,480	245	23,045
Upper Division	209	7,631	196	6,944	184	7,012	184	7,811
Graduate	50	1,108	49	1,031	46	929	47	763
<i>College Total</i>	484	27,892	511	28,585	484	30,421	476	31,619
<i>% of Univ Total</i>	40.2%	45.3%	39.9%	45.7%	39.3%	49.0%	37.5%	49.6%
<i>Other</i>								
Remedial	29	2,900	23	2,584	22	2,528	20	2,012
Lower Division	25	685	18	549	25	679	29	1,139
Upper Division	13	277	11	285	11	299	15	498
<i>Total</i>	67	3,862	52	3,418	58	3,506	64	3,649
<i>% of Univ Total</i>	5.6%	6.3%	4.1%	5.5%	4.7%	5.6%	5.0%	5.7%
<i>University Total</i>								
Remedial	31	2,966	24	2,634	22	2,528	20	2,012
Lower Division	426	29,875	487	32,113	466	33,154	452	33,718
Upper Division	577	23,960	568	22,426	546	21,656	563	22,710
Graduate	171	4,796	203	5,397	199	4,734	233	5,335

<i>Total</i>	1,205	61,597	1,282	62,570	1,233	62,072	1,268	63,775
--------------	-------	--------	-------	--------	-------	--------	-------	--------

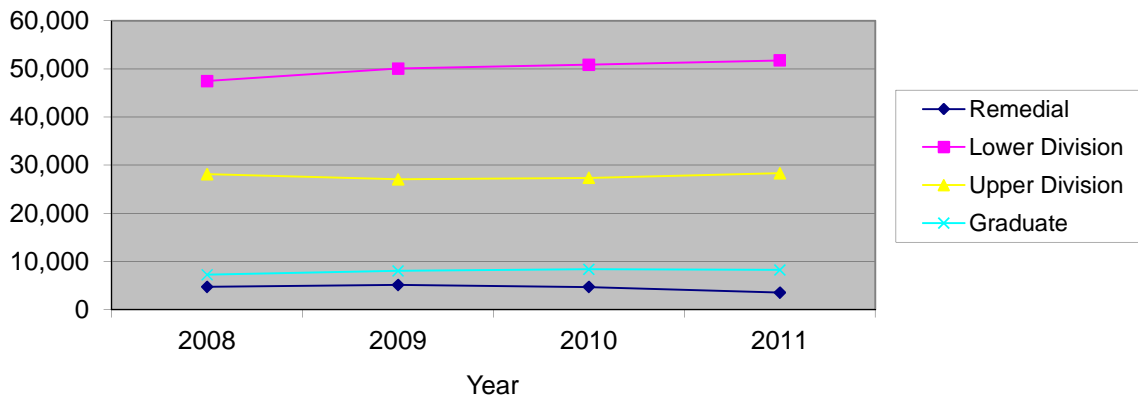
### Credit Hours Taught: Part-Time Faculty



### Credit Hours Taught by College and Level of Instruction

Part-Time Faculty	Fall 2008		Fall 2009		Fall 2010		Fall 2011	
	# Sections	SCH	# Sections	SCH	# Sections	SCH	# Sections	SCH
<i>the Arts</i>								
Lower Division	54	2,814	48	2,635	52	2,437	56	2,302
Upper Division	26	384	15	159	21	166	24	221
Graduate	6	14	0	0	3	7	7	16
<i>College Total</i>	86	3,212	63	2,794	76	2,610	87	2,539
<i>% of Univ Total</i>	15.3%	12.3%	11.5%	10.0%	13.3%	8.9%	17.0%	9.0%
<i>Business &amp; Computer Science</i>								
Lower Division	16	1,415	5	314	12	1,401	14	1,260
Upper Division	2	150	4	234	1	99	3	135
Graduate	0	0	0	0	10	135	9	135
<i>College Total</i>	18	1,565	9	548	23	1,635	26	1,530
<i>% of Univ Total</i>	3.2%	6.0%	1.6%	2.0%	4.0%	5.6%	5.1%	5.4%
<i>Education &amp; Health Professions</i>								
Lower Division	59	2,223	67	2,296	59	2,360	47	1,904
Upper Division	37	976	40	1,204	39	1,712	21	1,768
Graduate	28	920	42	1,122	68	1,733	51	1,376
<i>College Total</i>	124	4,119	149	4,622	166	5,805	119	5,048
<i>% of Univ Total</i>	22.1%	15.8%	27.3%	16.6%	29.0%	19.8%	23.3%	17.9%
<i>Letters &amp; Sciences</i>								
Remedial	3	84	3	166	2	24	0	0
Lower Division	164	9,845	110	9,042	103	8,899	112	10,309
Upper Division	58	2,688	71	3,015	83	3,763	77	3,511
Graduate	41	1,521	40	1,572	49	1,776	28	1,425
<i>College Total</i>	266	14,138	224	13,795	237	14,462	217	15,245
<i>% of Univ Total</i>	47.4%	54.3%	41.0%	49.6%	41.4%	49.3%	42.5%	54.0%
<i>Other</i>								
Remedial	25	1,680	30	2,344	25	2,160	19	1,536
Lower Division	42	1,345	69	3,690	46	2,637	43	2,313
Upper Division	0	0	2	46	0	0	0	0
<i>Total</i>	67	3,025	101	6,080	71	4,797	62	3,849
<i>% of Univ Total</i>	11.9%	11.6%	18.5%	21.8%	12.4%	16.4%	12.1%	13.6%
<i>University Total</i>								
Remedial	28	1,764	33	2,510	27	2,184	19	1,536
Lower Division	335	17,642	299	17,977	272	17,734	272	18,088
Upper Division	123	4,198	132	4,658	144	5,740	125	5,635
Graduate	75	2,455	82	2,694	130	3,651	95	2,952
<i>Total</i>	561	26,059	546	27,839	573	29,309	511	28,211

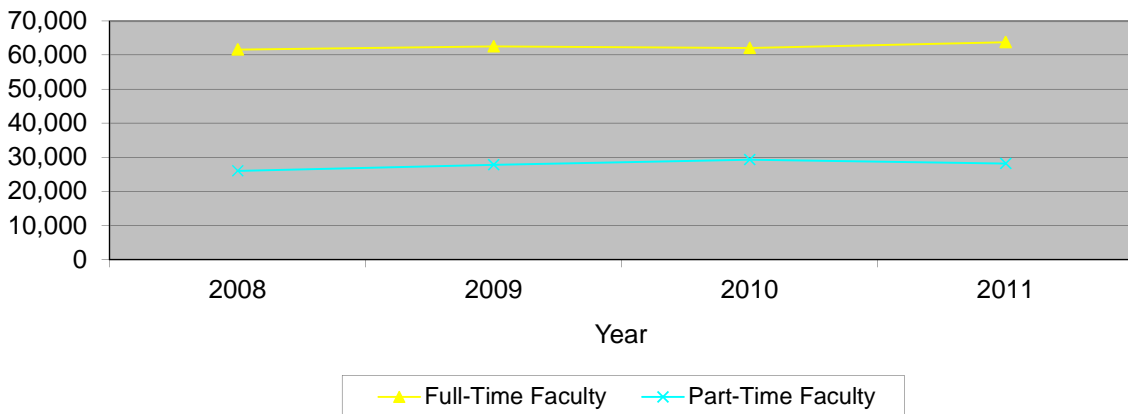
Credit Hours Taught: All Faculty



Credit Hours Taught by College and Level of Instruction

All Faculty	Fall 2008		Fall 2009		Fall 2010		Fall 2011	
	# Sections	SCH	# Sections	SCH	# Sections	SCH	# Sections	SCH
<i>the Arts</i>								
Lower Division	160	5,851	162	6,003	163	5,887	166	5,433
Upper Division	187	3,005	188	2,837	184	2,671	212	2,969
Graduate	29	101	40	161	46	190	75	380
<i>College Total</i>	376	8,957	390	9,001	393	8,748	453	8,782
<i>% of Univ Total</i>	21.3%	10.2%	21.3%	10.0%	21.8%	9.6%	25.5%	9.5%
<i>Business &amp; Computer Science</i>								
Lower Division	50	6,020	50	5,166	53	5,796	47	5,368
Upper Division	92	7,199	96	6,554	97	6,051	93	5,673
Graduate	21	990	28	966	39	1,059	37	1,317
<i>College Total</i>	163	14,209	174	12,686	189	12,906	177	12,358
<i>% of Univ Total</i>	9.2%	16.2%	9.5%	14.0%	10.5%	14.1%	9.9%	13.4%
<i>Education &amp; Health Professions</i>								
Lower Division	97	4,684	112	5,080	94	4,510	82	4,199
Upper Division	141	7,358	136	7,403	131	7,600	107	7,883
Graduate	105	3,531	128	4,361	149	4,431	141	4,402
<i>College Total</i>	343	15,573	376	16,844	374	16,541	330	16,484
<i>% of Univ Total</i>	19.4%	17.8%	20.6%	18.6%	20.7%	18.1%	18.5%	17.9%
<i>Letters &amp; Sciences</i>								
Remedial	5	150	4	216	2	24	0	0
Lower Division	387	28,932	375	29,602	357	31,379	357	33,354
Upper Division	267	10,319	267	9,959	267	10,775	261	11,322
Graduate	91	2,629	89	2,603	95	2,705	75	2,188
<i>College Total</i>	750	42,030	735	42,380	721	44,883	693	46,864
<i>% of Univ Total</i>	42.5%	47.9%	40.2%	46.9%	39.9%	49.1%	39.0%	50.9%
<i>Other</i>								
Remedial	54	4,580	53	4,928	47	4,688	39	3,548
Lower Division	67	2,030	87	4,239	71	3,316	72	3,452
Upper Division	13	277	13	331	11	299	15	498
<i>Total</i>	134	6,887	153	9,498	129	8,303	126	7,498
<i>% of Univ Total</i>	7.6%	7.9%	8.4%	10.5%	7.1%	9.1%	7.1%	8.2%
<i>University Total</i>								
Remedial	59	4,730	57	5,144	49	4,712	39	3,548
Lower Division	761	47,517	786	50,090	738	50,888	724	51,806
Upper Division	700	28,158	700	27,084	690	27,396	688	28,345
Graduate	246	7,251	285	8,091	329	8,385	328	8,287
<i>Total</i>	1,766	87,656	1,828	90,409	1,806	91,381	1,779	91,986

Credit Hours Taught by Faculty Status



Credit Hours Taught by College and Faculty Status								
All Faculty	Fall 2008		Fall 2009		Fall 2010		Fall 2011	
	# Sections	SCH	# Sections	SCH	# Sections	SCH	# Sections	SCH
<i>the Arts</i>								
Full-Time Faculty	290	5,745	327	6,207	317	6,138	366	6,243
Part-Time Faculty	86	3,212	63	2,794	76	2,610	87	2,539
<i>College Total</i>	376	8,957	390	9,001	393	8,748	453	8,782
<i>% of Univ Total</i>	21.3%	10.2%	21.3%	10.0%	21.8%	9.6%	25.5%	9.5%
<i>Business &amp; Computer Science</i>								
Full-Time Faculty	145	12,644	165	12,138	166	11,271	151	10,828
Part-Time Faculty	18	1,565	9	548	23	1,635	26	1,530
<i>College Total</i>	163	14,209	174	12,686	189	12,906	177	12,358
<i>% of Univ Total</i>	9.2%	16.2%	9.5%	14.0%	10.5%	14.1%	9.9%	13.4%
<i>Education &amp; Health Professions</i>								
Full-Time Faculty	219	11,454	227	12,222	208	10,736	211	11,436
Part-Time Faculty	124	4,119	149	4,622	166	5,805	119	5,048
<i>College Total</i>	343	15,573	376	16,844	374	16,541	330	16,484
<i>% of Univ Total</i>	19.4%	17.8%	20.6%	18.6%	20.7%	18.1%	18.5%	17.9%
<i>Letters &amp; Sciences</i>								
Full-Time Faculty	484	27,892	511	28,585	484	30,421	476	31,619
Part-Time Faculty	266	14,138	224	13,795	237	14,462	217	15,245
<i>College Total</i>	750	42,030	735	42,380	721	44,883	693	46,864
<i>% of Univ Total</i>	42.5%	47.9%	40.2%	46.9%	39.9%	49.1%	39.0%	50.9%
<i>Other</i>								
Full-Time Faculty	67	3,862	52	3,418	58	3,506	64	3,649
Part-Time Faculty	67	3,025	101	6,080	71	4,797	62	3,849
<i>Total</i>	134	6,887	153	9,498	129	8,303	126	7,498
<i>% of Univ Total</i>	7.6%	7.9%	8.4%	10.5%	7.1%	9.1%	7.1%	8.2%
<i>University Total</i>								
Full-Time Faculty	1,205	61,597	1,282	62,570	1,233	62,072	1,268	63,775
Part-Time Faculty	561	26,059	546	27,839	573	29,309	511	28,211
<i>Total</i>	1,766	87,656	1,828	90,409	1,806	91,381	1,779	91,986