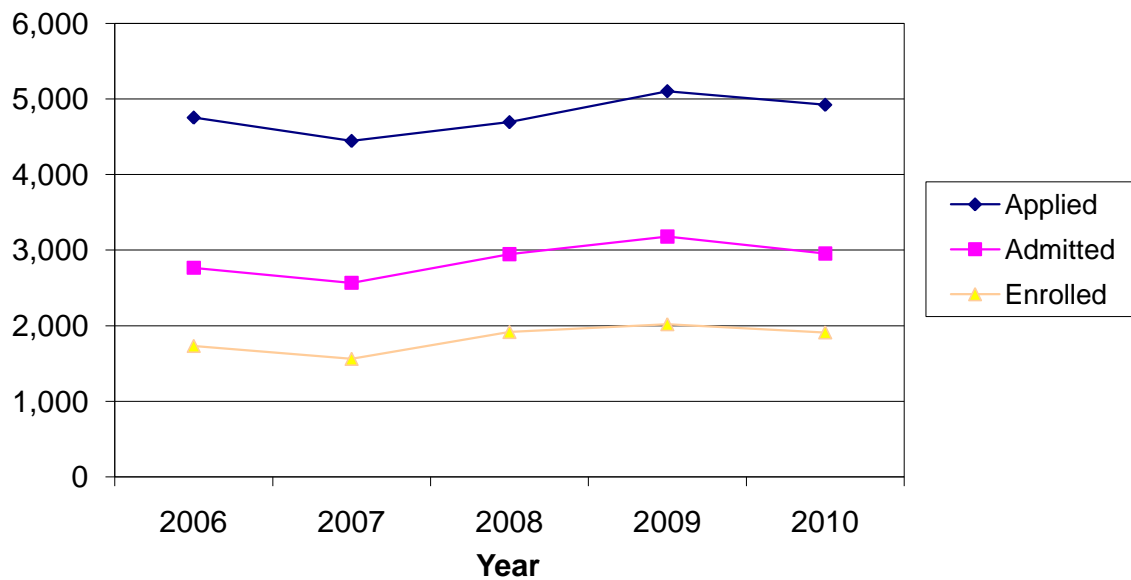


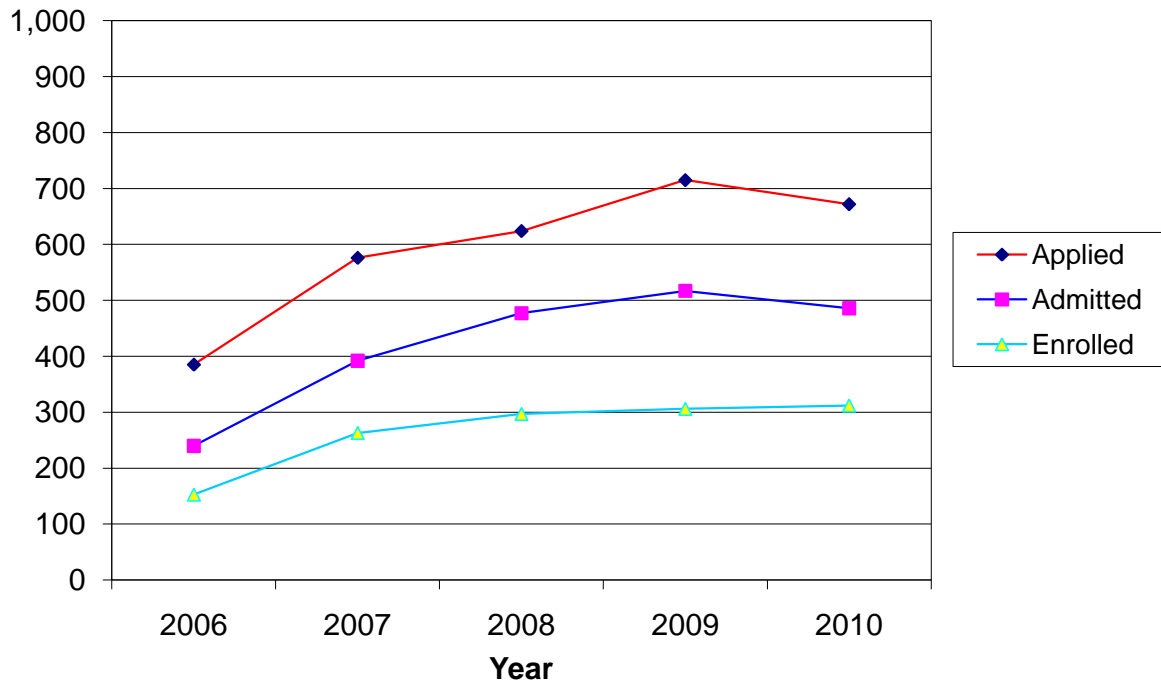
CSU Facts & Figures 2010: Applications Received

Undergraduate Applications Received



Undergraduate Applications Received							
	Fall 2006	Fall 2007	Fall 2008	Fall 2009	Fall 2010	4-Year # Change	4-Year % Change
Applied							
Entering Freshmen	3,307	3,093	3,085	3,439	3,440	133	4.0%
Transfer Students	1,372	1,282	1,434	1,539	1,364	-8	-0.6%
Other New Students	75	71	175	125	119	44	58.7%
<i>Total</i>	4,754	4,446	4,694	5,103	4,923	169	3.6%
Accepted							
Entering Freshmen	1,833	1,681	1,848	2,027	1,935	102	5.6%
Transfer Students	884	838	951	1,066	932	48	5.4%
Other New Students	50	49	148	86	89	39	78.0%
<i>Total</i>	2,767	2,568	2,947	3,179	2,956	189	6.8%
Enrolled							
Entering Freshmen	1,167	1,035	1,244	1,319	1,240	73	6.3%
Transfer Students	526	492	566	631	604	78	14.8%
Other New Students	40	35	107	70	68	28	70.0%
<i>Total</i>	1,733	1,562	1,917	2,020	1,912	179	10.3%

Graduate Applications Received



Graduate Applications Received							
	Fall 2006	Fall 2007	Fall 2008	Fall 2009	Fall 2010	4-Year # Change	4-Year % Change
Applied							
MBA/MS Programs	35	55	46	53	81	46	131.4%
MEd/MAT/MS - Education	145	229	279	320	282	137	94.5%
MPA Programs	120	125	109	124	114	-6	-5.0%
MM Program	11	13	12	15	15	4	36.4%
MS-Environmental Science	6	5	15	16	14	8	133.3%
MS-Computer Science	39	50	64	74	58	19	48.7%
EdS Programs	22	92	95	101	59	37	168.2%
EdD Program	NA	NA	NA	NA	33		
Graduate-Other	7	7	4	12	16	9	128.6%
<i>Total</i>	385	576	624	715	672	177	46.0%
Accepted							
MBA/MS Programs	14	28	28	25	46	32	228.6%
MEd/MAT/MS - Education	73	142	202	210	189	116	158.9%
MPA Programs	91	92	97	114	94	3	3.3%
MM Program	5	8	3	5	6	1	20.0%
MS-Environmental Science	5	4	14	11	12	7	140.0%
MS-Computer Science	31	34	52	53	47	16	51.6%
EdS Programs	16	78	79	90	54	38	237.5%
EdD Program	NA	NA	NA	NA	27		
Graduate-Other	5	6	2	9	11	6	120.0%
<i>Total</i>	240	392	477	517	486	60	25.0%
Enrolled							
MBA/MS Programs	14	21	22	17	32	18	128.6%
MEd/MAT/MS - Education	41	89	111	117	120	79	192.7%
MPA Programs	62	64	68	75	67	5	8.1%
MM Program	4	5	2	5	6	2	50.0%
MS-Environmental Science	4	3	12	5	6	2	50.0%
MS-Computer Science	22	22	41	30	30	8	36.4%
EdS Programs	4	53	40	50	35	31	775.0%
EdD Program	NA	NA	NA	NA	8		
Graduate-Other	2	6	1	7	8	6	300.0%
<i>Total</i>	153	263	297	306	312	151	98.7%