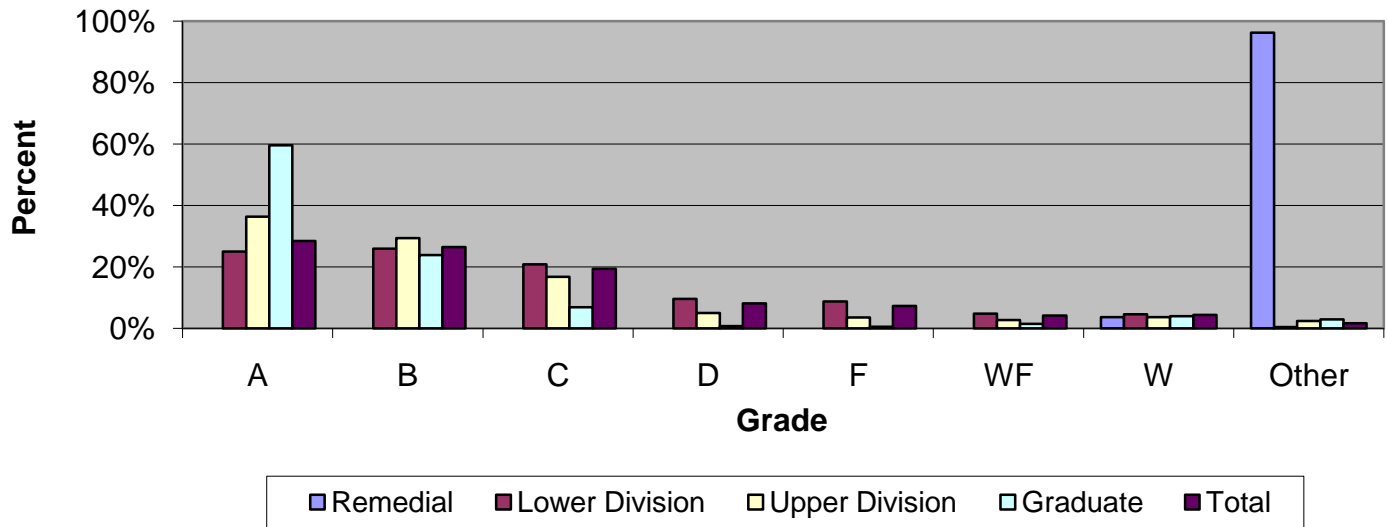


CSU Facts & Figures 2010: Grade Distribution

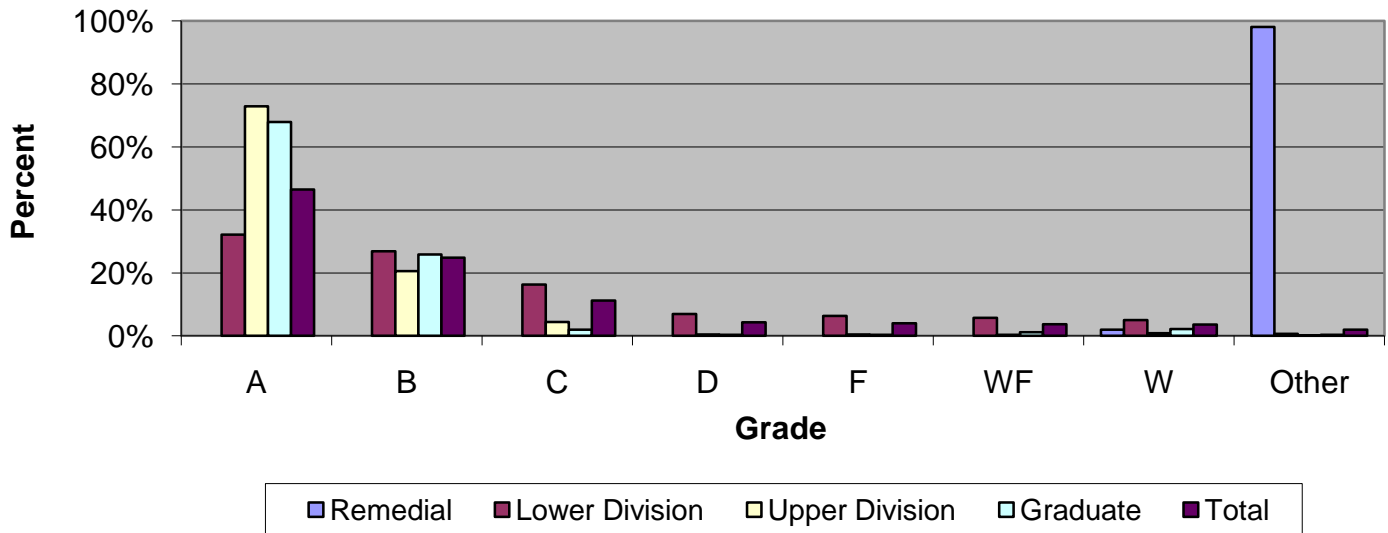
Grade Distribution of Full-Time Faculty for 2009-10 College of Letters & Sciences



Grade Distribution by Level of Instruction - College of Letters & Sciences

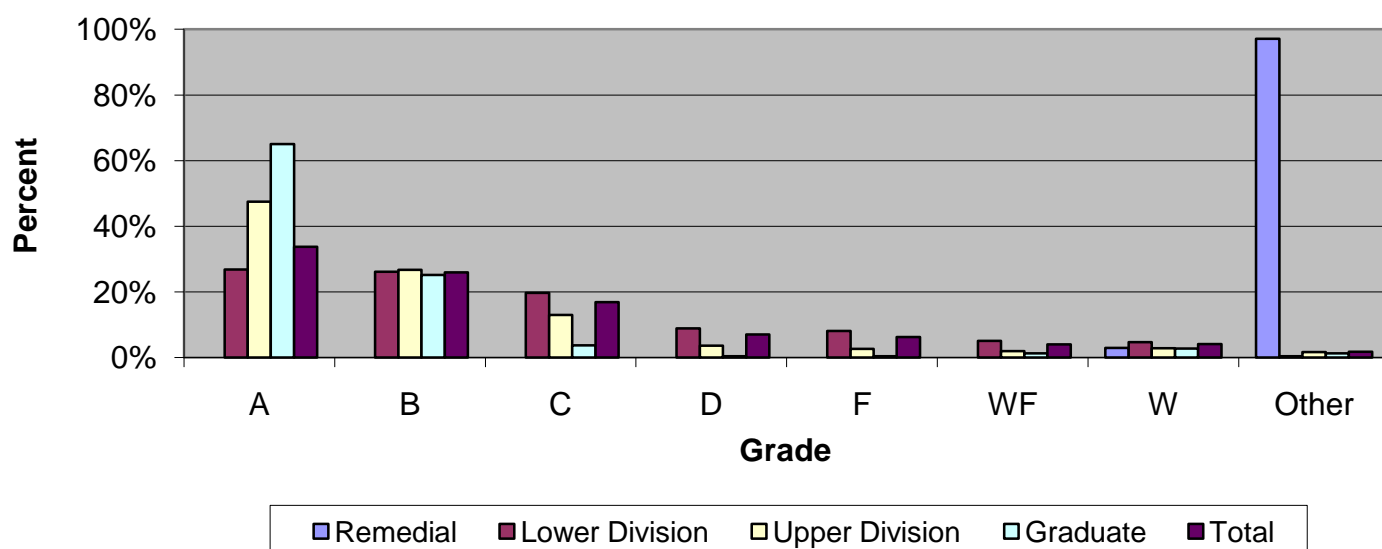
Full-Time Faculty	A's	B's	C's	D's	F's	WF's	W's	Other	Total
<i>2006-2007</i>									
Remedial	0	0	0	0	0	0	1	53	54
Percent	0.0%	0.0%	0.0%	0.0%	0.0%	0.0%	1.9%	98.1%	100.0%
Lower Division	3,662	3,721	2,843	1,249	964	621	1,542	38	14,640
Percent	25.0%	25.4%	19.4%	8.5%	6.6%	4.2%	10.5%	0.3%	100.0%
Upper Division	1,775	1,463	869	252	187	153	400	58	5,157
Percent	34.4%	28.4%	16.9%	4.9%	3.6%	3.0%	7.8%	1.1%	100.0%
Graduate	364	169	29	3	14	8	41	9	637
Percent	57.1%	26.5%	4.6%	0.5%	2.2%	1.3%	6.4%	1.4%	100.0%
Total	5,801	5,353	3,741	1,504	1,165	782	1,984	158	20,488
Percent	28.3%	26.1%	18.3%	7.3%	5.7%	3.8%	9.7%	0.8%	100.0%
<i>2007-2008</i>									
Remedial	0	0	0	0	0	0	5	145	150
Percent	0.0%	0.0%	0.0%	0.0%	0.0%	0.0%	3.3%	96.7%	100.0%
Lower Division	3,366	4,075	3,166	1,434	1,027	714	734	11	14,527
Percent	23.2%	28.1%	21.8%	9.9%	7.1%	4.9%	5.1%	0.1%	100.0%
Upper Division	1,756	1,574	942	274	197	148	230	49	5,170
Percent	34.0%	30.4%	18.2%	5.3%	3.8%	2.9%	4.4%	0.9%	100.0%
Graduate	454	163	30	5	14	17	25	12	720
Percent	63.1%	22.6%	4.2%	0.7%	1.9%	2.4%	3.5%	1.7%	100.0%
Total	5,576	5,812	4,138	1,713	1,238	879	994	217	20,567
Percent	27.1%	28.3%	20.1%	8.3%	6.0%	4.3%	4.8%	1.1%	100.0%
<i>2008-2009</i>									
Remedial	0	0	0	0	0	0	6	122	128
Percent	0.0%	0.0%	0.0%	0.0%	0.0%	0.0%	4.7%	95.3%	100.0%
Lower Division	3,738	4,284	3,427	1,606	1,477	806	835	22	16,195
Percent	23.1%	26.5%	21.2%	9.9%	9.1%	5.0%	5.2%	0.1%	100.0%
Upper Division	1,833	1,675	1,045	264	208	157	182	62	5,426
Percent	33.8%	30.9%	19.3%	4.9%	3.8%	2.9%	3.4%	1.1%	100.0%
Graduate	477	178	55	6	13	15	37	8	789
Percent	60.5%	22.6%	7.0%	0.8%	1.6%	1.9%	4.7%	1.0%	100.0%
Total	6,048	6,137	4,527	1,876	1,698	978	1,060	214	22,538
Percent	26.8%	27.2%	20.1%	8.3%	7.5%	4.3%	4.7%	0.9%	100.0%
<i>2009-2010</i>									
Remedial	0	0	0	0	0	0	7	182	189
Percent	0.0%	0.0%	0.0%	0.0%	0.0%	0.0%	3.7%	96.3%	100.0%
Lower Division	4,299	4,461	3,589	1,649	1,514	826	785	67	17,190
Percent	25.0%	26.0%	20.9%	9.6%	8.8%	4.8%	4.6%	0.4%	100.0%
Upper Division	1,976	1,599	912	271	196	150	200	131	5,435
Percent	36.4%	29.4%	16.8%	5.0%	3.6%	2.8%	3.7%	2.4%	100.0%
Graduate	430	172	50	5	4	11	29	21	722
Percent	59.6%	23.8%	6.9%	0.7%	0.6%	1.5%	4.0%	2.9%	100.0%
Total	6,705	6,232	4,551	1,925	1,714	987	1,021	401	23,536
Percent	28.5%	26.5%	19.3%	8.2%	7.3%	4.2%	4.3%	1.7%	100.0%

Grade Distribution of Part-Time Faculty for 2009-10
College of Letters & Sciences



Grade Distribution by Level of Instruction - College of Letters & Sciences									
Part-Time Faculty	A's	B's	C's	D's	F's	WF's	W's	Other	Total
<i>2006-2007</i>									
Remedial	0	0	0	0	0	0	11	273	284
Percent	0.0%	0.0%	0.0%	0.0%	0.0%	0.0%	3.9%	96.1%	100.0%
Lower Division	1,843	2,002	1,386	491	617	389	1,183	18	7,929
Percent	23.2%	25.2%	17.5%	6.2%	7.8%	4.9%	14.9%	0.2%	100.0%
Upper Division	1,667	581	139	12	21	12	42	0	2,474
Percent	67.4%	23.5%	5.6%	0.5%	0.8%	0.5%	1.7%	0.0%	100.0%
Graduate	1,052	314	15	0	12	11	41	0	1,445
Percent	72.8%	21.7%	1.0%	0.0%	0.8%	0.8%	2.8%	0.0%	100.0%
Total	4,562	2,897	1,540	503	650	412	1,277	291	12,132
Percent	37.6%	23.9%	12.7%	4.1%	5.4%	3.4%	10.5%	2.4%	100.0%
<i>2007-2008</i>									
Remedial	0	0	0	0	0	0	4	96	100
Percent	0.0%	0.0%	0.0%	0.0%	0.0%	0.0%	4.0%	96.0%	100.0%
Lower Division	1,711	1,917	1,361	506	535	380	646	19	7,075
Percent	24.2%	27.1%	19.2%	7.2%	7.6%	5.4%	9.1%	0.3%	100.0%
Upper Division	1,704	474	127	14	21	17	25	0	2,382
Percent	71.5%	19.9%	5.3%	0.6%	0.9%	0.7%	1.0%	0.0%	100.0%
Graduate	897	395	28	1	8	12	17	1	1,359
Percent	66.0%	29.1%	2.1%	0.1%	0.6%	0.9%	1.3%	0.1%	100.0%
Total	4,312	2,786	1,516	521	564	409	692	116	10,916
Percent	39.5%	25.5%	13.9%	4.8%	5.2%	3.7%	6.3%	1.1%	100.0%
<i>2008-2009</i>									
Remedial	0	0	0	0	0	0	3	110	113
Percent	0.0%	0.0%	0.0%	0.0%	0.0%	0.0%	2.7%	97.3%	100.0%
Lower Division	1,637	1,598	1,128	486	460	407	403	7	6,126
Percent	26.7%	26.1%	18.4%	7.9%	7.5%	6.6%	6.6%	0.1%	100.0%
Upper Division	1,560	435	118	15	21	15	28	0	2,192
Percent	71.2%	19.8%	5.4%	0.7%	1.0%	0.7%	1.3%	0.0%	100.0%
Graduate	870	349	26	0	13	11	16	0	1,285
Percent	67.7%	27.2%	2.0%	0.0%	1.0%	0.9%	1.2%	0.0%	100.0%
Total	4,067	2,382	1,272	501	494	433	450	117	9,716
Percent	41.9%	24.5%	13.1%	5.2%	5.1%	4.5%	4.6%	1.2%	100.0%
<i>2009-2010</i>									
Remedial	0	0	0	0	0	0	3	150	153
Percent	0.0%	0.0%	0.0%	0.0%	0.0%	0.0%	2.0%	98.0%	100.0%
Lower Division	1,930	1,612	976	415	379	345	301	38	5,996
Percent	32.2%	26.9%	16.3%	6.9%	6.3%	5.8%	5.0%	0.6%	100.0%
Upper Division	1,746	492	106	11	11	7	20	2	2,395
Percent	72.9%	20.5%	4.4%	0.5%	0.5%	0.3%	0.8%	0.1%	100.0%
Graduate	920	350	27	4	5	15	29	5	1,355
Percent	67.9%	25.8%	2.0%	0.3%	0.4%	1.1%	2.1%	0.4%	100.0%
Total	4,596	2,454	1,109	430	395	367	353	195	9,899
Percent	46.4%	24.8%	11.2%	4.3%	4.0%	3.7%	3.6%	2.0%	100.0%

Grade Distribution of All Faculty for 2009-10
College of Letters & Sciences



Grade Distribution by Level of Instruction - College of Letters & Sciences									
All Faculty	A's	B's	C's	D's	F's	WF's	W's	Other	Total
<i>2006-2007</i>									
Remedial	0	0	0	0	0	0	12	326	338
Percent							3.6%	96.4%	100.0%
Lower Division	5,505	5,723	4,229	1,740	1,581	1,010	2,725	56	22,569
Percent	24.4%	25.4%	18.7%	7.7%	7.0%	4.5%	12.1%	0.2%	100.0%
Upper Division	3,442	2,044	1,008	264	208	165	442	58	7,631
Percent	45.1%	26.8%	13.2%	3.5%	2.7%	2.2%	5.8%	0.8%	100.0%
Graduate	1,416	483	44	3	26	19	82	9	2,082
Percent	68.0%	23.2%	2.1%	0.1%	1.2%	0.9%	3.9%	0.4%	100.0%
Total	10,363	8,250	5,281	2,007	1,815	1,194	3,261	449	32,620
Percent	31.8%	25.3%	16.2%	6.2%	5.6%	3.7%	10.0%	1.4%	100.0%
<i>2007-2008</i>									
Remedial	0	0	0	0	0	0	9	241	250
Percent	0.0%	0.0%	0.0%	0.0%	0.0%	0.0%	3.6%	96.4%	100.0%
Lower Division	5,077	5,992	4,527	1,940	1,562	1,094	1,380	30	21,602
Percent	23.5%	27.7%	21.0%	9.0%	7.2%	5.1%	6.4%	0.1%	100.0%
Upper Division	3,460	2,048	1,069	288	218	165	255	49	7,552
Percent	45.8%	27.1%	14.2%	3.8%	2.9%	2.2%	3.4%	0.6%	100.0%
Graduate	1,351	558	58	6	22	29	42	13	2,079
Percent	65.0%	26.8%	2.8%	0.3%	1.1%	1.4%	2.0%	0.6%	100.0%
Total	9,888	8,598	5,654	2,234	1,802	1,288	1,686	333	31,483
Percent	31.4%	27.3%	18.0%	7.1%	5.7%	4.1%	5.4%	1.1%	100.0%
<i>2008-2009</i>									
Remedial	0	0	0	0	0	0	9	232	241
Percent	0.0%	0.0%	0.0%	0.0%	0.0%	0.0%	3.7%	96.3%	100.0%
Lower Division	5,375	5,882	4,555	2,092	1,937	1,213	1,238	29	22,321
Percent	24.1%	26.4%	20.4%	9.4%	8.7%	5.4%	5.5%	0.1%	100.0%
Upper Division	3,393	2,110	1,163	279	229	172	210	62	7,618
Percent	44.5%	27.7%	15.3%	3.7%	3.0%	2.3%	2.8%	0.8%	100.0%
Graduate	1,347	527	81	6	26	26	53	8	2,074
Percent	64.9%	25.4%	3.9%	0.3%	1.3%	1.3%	2.6%	0.4%	100.0%
Total	10,115	8,519	5,799	2,377	2,192	1,411	1,510	331	32,254
Percent	31.4%	26.4%	18.0%	7.4%	6.8%	4.4%	4.7%	1.0%	100.0%
<i>2009-2010</i>									
Remedial	0	0	0	0	0	0	10	332	342
Percent	0.0%	0.0%	0.0%	0.0%	0.0%	0.0%	2.9%	97.1%	100.0%
Lower Division	6,229	6,073	4,565	2,064	1,893	1,171	1,086	105	23,186
Percent	26.9%	26.2%	19.7%	8.9%	8.2%	5.1%	4.7%	0.5%	100.0%
Upper Division	3,722	2,091	1,018	282	207	157	220	133	7,830
Percent	47.5%	26.7%	13.0%	3.6%	2.6%	2.0%	2.8%	1.7%	100.0%
Graduate	1,350	522	77	9	9	26	58	26	2,077
Percent	65.0%	25.1%	3.7%	0.4%	0.4%	1.3%	2.8%	1.3%	100.0%
Total	11,301	8,686	5,660	2,355	2,109	1,354	1,374	596	33,435
Percent	33.8%	26.0%	16.9%	7.0%	6.3%	4.0%	4.1%	1.8%	100.0%