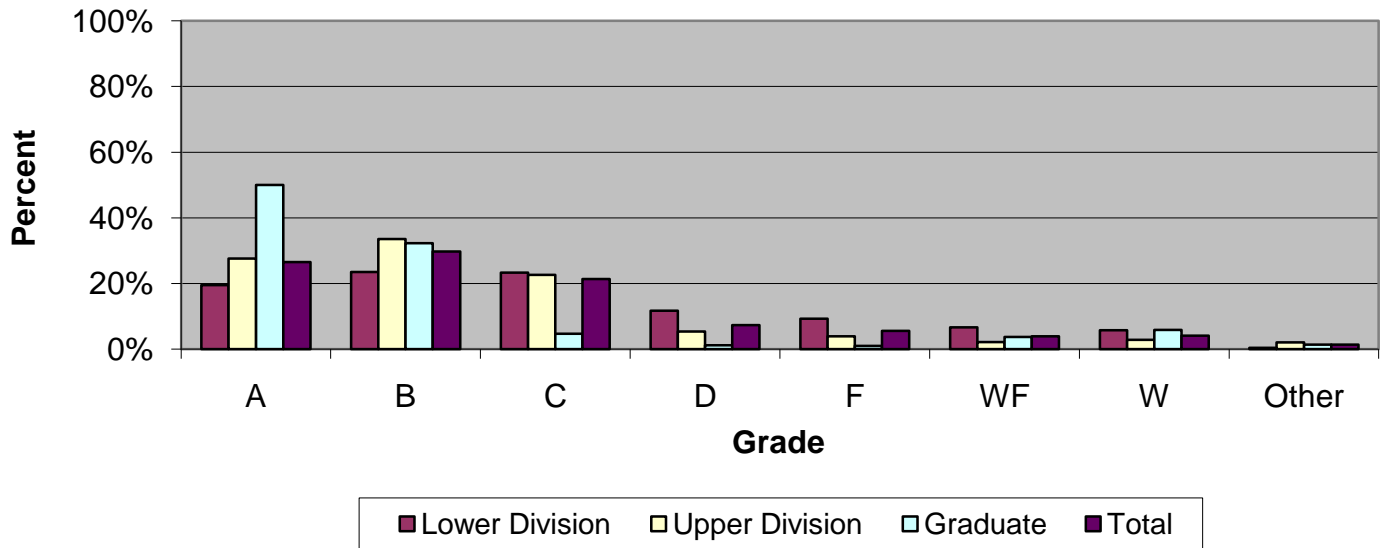


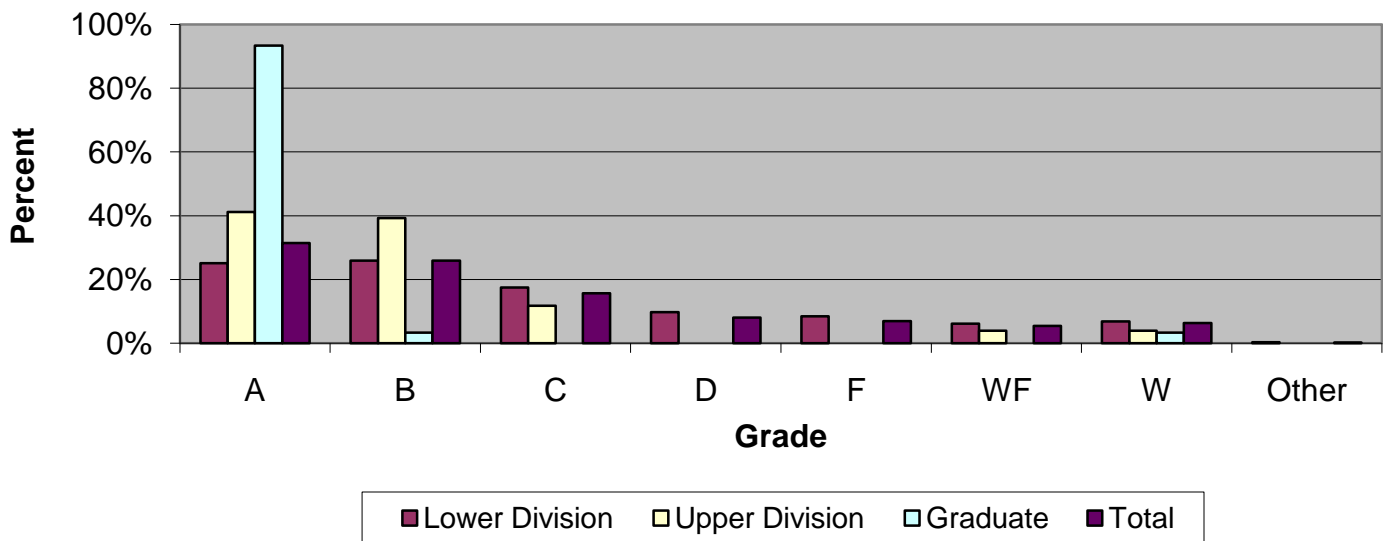
CSU Facts & Figures 2010: Grade Distribution

Grade Distribution of Full-Time Faculty for 2009-10 D. Abbott Turner College of Business & Computer Science



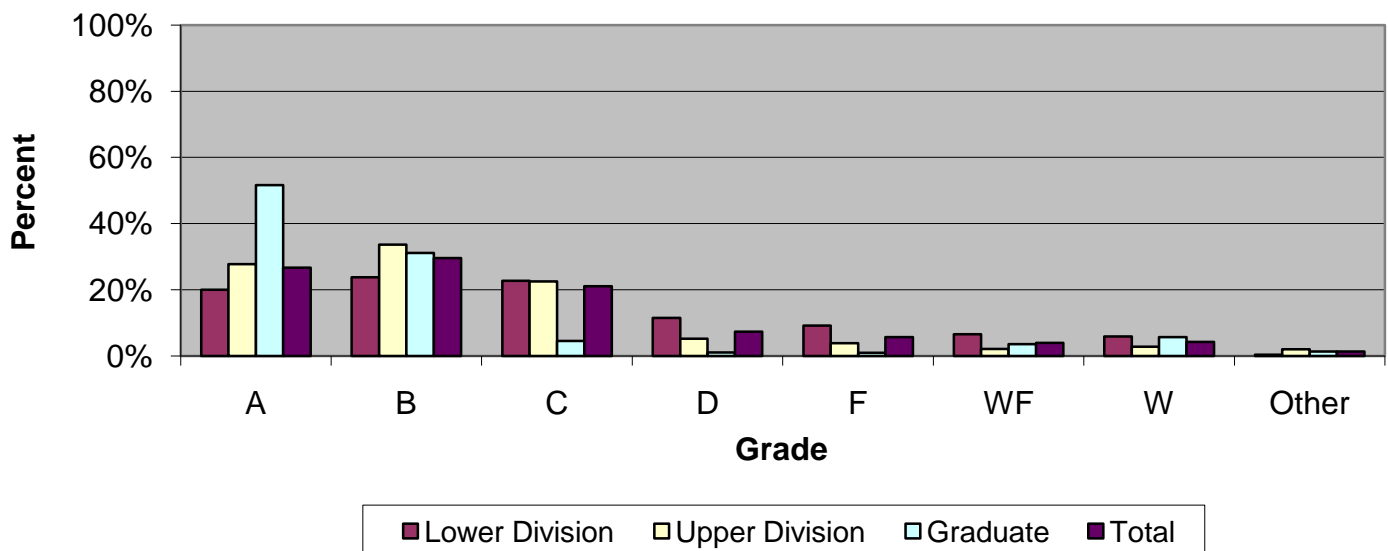
Grade Distribution by Level of Instruction - D. A. Turner College of Business & Computer Science									
Full-Time Faculty	A's	B's	C's	D's	F's	WF's	W's	Other	Total
<i>2006-2007</i>									
Lower Division	723	817	774	374	340	167	392	4	3,591
Percent	20.1%	22.8%	21.6%	10.4%	9.5%	4.7%	10.9%	0.1%	100.0%
Upper Division	1,232	1,693	981	215	105	74	288	17	4,605
Percent	26.8%	36.8%	21.3%	4.7%	2.3%	1.6%	6.3%	0.4%	100.0%
Graduate	317	163	31	0	5	11	46	7	580
Percent	54.7%	28.1%	5.3%	0.0%	0.9%	1.9%	7.9%	1.2%	100.0%
Total	2,272	2,673	1,786	589	450	252	726	28	8,776
Percent	25.9%	30.5%	20.4%	6.7%	5.1%	2.9%	8.3%	0.3%	100.0%
<i>2007-2008</i>									
Lower Division	758	754	750	370	332	255	196	2	3,417
Percent	22.2%	22.1%	21.9%	10.8%	9.7%	7.5%	5.7%	0.1%	100.0%
Upper Division	1,128	1,860	1,290	242	164	102	186	23	4,995
Percent	22.6%	37.2%	25.8%	4.8%	3.3%	2.0%	3.7%	0.5%	100.0%
Graduate	344	175	53	6	27	20	30	3	658
Percent	52.3%	26.6%	8.1%	0.9%	4.1%	3.0%	4.6%	0.5%	100.0%
Total	2,230	2,789	2,093	618	523	377	412	28	9,070
Percent	24.6%	30.7%	23.1%	6.8%	5.8%	4.2%	4.5%	0.3%	100.0%
<i>2008-2009</i>									
Lower Division	649	798	819	413	322	270	197	5	3,473
Percent	18.7%	23.0%	23.6%	11.9%	9.3%	7.8%	5.7%	0.1%	100.0%
Upper Division	1,220	1,971	1,328	281	176	117	175	13	5,281
Percent	23.1%	37.3%	25.1%	5.3%	3.3%	2.2%	3.3%	0.2%	100.0%
Graduate	454	211	34	7	13	27	50	4	800
Percent	56.8%	26.4%	4.3%	0.9%	1.6%	3.4%	6.3%	0.5%	100.0%
Total	2,323	2,980	2,181	701	511	414	422	22	9,554
Percent	24.3%	31.2%	22.8%	7.3%	5.3%	4.3%	4.4%	0.2%	100.0%
<i>2009-2010</i>									
Lower Division	669	808	801	401	318	229	199	12	3,437
Percent	19.5%	23.5%	23.3%	11.7%	9.3%	6.7%	5.8%	0.3%	100.0%
Upper Division	1,428	1,736	1,171	275	200	111	144	108	5,173
Percent	27.6%	33.6%	22.6%	5.3%	3.9%	2.1%	2.8%	2.1%	100.0%
Graduate	394	254	37	9	8	29	46	11	788
Percent	50.0%	32.2%	4.7%	1.1%	1.0%	3.7%	5.8%	1.4%	100.0%
Total	2,491	2,798	2,009	685	526	369	389	131	9,398
Percent	26.5%	29.8%	21.4%	7.3%	5.6%	3.9%	4.1%	1.4%	100.0%

Grade Distribution of Part-Time Faculty for 2009-10
D. Abbott Turner College of Business & Computer Science



Grade Distribution by Level of Instruction - D. A. Turner College of Business & Computer Science									
Part-Time Faculty	A's	B's	C's	D's	F's	WF's	W's	Other	Total
<i>2006-2007</i>									
Lower Division	348	290	187	77	51	53	149	1	1,156
Percent	30.1%	25.1%	16.2%	6.7%	4.4%	4.6%	12.9%	0.1%	100.0%
Upper Division	63	95	23	2	0	3	13	0	199
Percent	31.7%	47.7%	11.6%	1.0%	0.0%	1.5%	6.5%	0.0%	100.0%
Graduate	0	0	0	0	0	0	0	0	0
Percent	0.0%	0.0%	0.0%	0.0%	0.0%	0.0%	0.0%	0.0%	0.0%
Total	411	385	210	79	51	56	162	1	1,355
Percent	30.3%	28.4%	15.5%	5.8%	3.8%	4.1%	12.0%	0.1%	100.0%
<i>2007-2008</i>									
Lower Division	266	188	125	61	47	61	61	1	810
Percent	32.8%	23.2%	15.4%	7.5%	5.8%	7.5%	7.5%	0.1%	100.0%
Upper Division	45	88	31	3	4	4	4	0	179
Percent	25.1%	49.2%	17.3%	1.7%	2.2%	2.2%	2.2%	0.0%	100.0%
Graduate	0	0	0	0	0	0	0	0	0
Percent	0.0%	0.0%	0.0%	0.0%	0.0%	0.0%	0.0%	0.0%	0.0%
Total	311	276	156	64	51	65	65	1	989
Percent	31.4%	27.9%	15.8%	6.5%	5.2%	6.6%	6.6%	0.1%	100.0%
<i>2008-2009</i>									
Lower Division	261	246	166	71	48	57	52	1	902
Percent	28.9%	27.3%	18.4%	7.9%	5.3%	6.3%	5.8%	0.1%	100.0%
Upper Division	33	31	8	0	0	0	2	0	74
Percent	44.6%	41.9%	10.8%	0.0%	0.0%	0.0%	2.7%	0.0%	100.0%
Graduate	0	0	0	0	0	0	0	0	0
Percent	0.0%	0.0%	0.0%	0.0%	0.0%	0.0%	0.0%	0.0%	0.0%
Total	294	277	174	71	48	57	54	1	976
Percent	30.1%	28.4%	17.8%	7.3%	4.9%	5.8%	5.5%	0.1%	100.0%
<i>2009-10</i>									
Lower Division	95	98	66	37	32	23	26	1	378
Percent	25.1%	25.9%	17.5%	9.8%	8.5%	6.1%	6.9%	0.3%	100.0%
Upper Division	21	20	6	0	0	2	2	0	51
Percent	41.2%	39.2%	11.8%	0.0%	0.0%	3.9%	3.9%	0.0%	100.0%
Graduate	28	1	0	0	0	0	1	0	30
Percent	93.3%	3.3%	0.0%	0.0%	0.0%	0.0%	3.3%	0.0%	100.0%
Total	144	119	72	37	32	25	29	1	459
Percent	31.4%	25.9%	15.7%	8.1%	7.0%	5.4%	6.3%	0.2%	100.0%

Grade Distribution of All Faculty for 2009-10
D. Abbott Turner College of Business & Computer Science



Grade Distribution by Level of Instruction - D. A. Turner College of Business & Computer Science									
All Faculty	A's	B's	C's	D's	F's	WF's	W's	Other	Total
<i>2006-2007</i>									
Lower Division	1,071	1,107	961	451	391	220	541	5	4,747
Percent	22.6%	23.3%	20.2%	9.5%	8.2%	4.6%	11.4%	0.1%	100.0%
Upper Division	1,295	1,788	1,004	217	105	77	301	17	4,804
Percent	27.0%	37.2%	20.9%	4.5%	2.2%	1.6%	6.3%	0.4%	100.0%
Graduate	317	163	31	0	5	11	46	7	580
Percent	54.7%	28.1%	5.3%	0.0%	0.9%	1.9%	7.9%	1.2%	100.0%
Total	2,683	3,058	1,996	668	501	308	888	29	10,131
Percent	26.5%	30.2%	19.7%	6.6%	4.9%	3.0%	8.8%	0.3%	100.0%
<i>2007-2008</i>									
Lower Division	1,024	942	875	431	379	316	257	3	4,227
Percent	24.2%	22.3%	20.7%	10.2%	9.0%	7.5%	6.1%	0.1%	100.0%
Upper Division	1,173	1,948	1,321	245	168	106	190	23	5,174
Percent	22.7%	37.6%	25.5%	4.7%	3.2%	2.0%	3.7%	0.4%	100.0%
Graduate	344	175	53	6	27	20	30	3	658
Percent	52.3%	26.6%	8.1%	0.9%	4.1%	3.0%	4.6%	0.5%	100.0%
Total	2,541	3,065	2,249	682	574	442	477	29	10,059
Percent	25.3%	30.5%	22.4%	6.8%	5.7%	4.4%	4.7%	0.3%	100.0%
<i>2008-2009</i>									
Lower Division	910	1,044	985	484	370	327	249	6	4,375
Percent	20.8%	23.9%	22.5%	11.1%	8.5%	7.5%	5.7%	0.1%	100.0%
Upper Division	1,253	2,002	1,336	281	176	117	177	13	5,355
Percent	23.4%	37.4%	24.9%	5.2%	3.3%	2.2%	3.3%	0.2%	100.0%
Graduate	454	211	34	7	13	27	50	4	800
Percent	56.8%	26.4%	4.3%	0.9%	1.6%	3.4%	6.3%	0.5%	100.0%
Total	2,617	3,257	2,355	772	559	471	476	23	10,530
Percent	24.9%	30.9%	22.4%	7.3%	5.3%	4.5%	4.5%	0.2%	100.0%
<i>2009-2010</i>									
Lower Division	764	906	867	438	350	252	225	13	3,815
Percent	20.0%	23.7%	22.7%	11.5%	9.2%	6.6%	5.9%	0.3%	100.0%
Upper Division	1,449	1,756	1,177	275	200	113	146	108	5,224
Percent	27.7%	33.6%	22.5%	5.3%	3.8%	2.2%	2.8%	2.1%	100.0%
Graduate	422	255	37	9	8	29	47	11	818
Percent	51.6%	31.2%	4.5%	1.1%	1.0%	3.5%	5.7%	1.3%	100.0%
Total	2,635	2,917	2,081	722	558	394	418	132	9,857
Percent	26.7%	29.6%	21.1%	7.3%	5.7%	4.0%	4.2%	1.3%	100.0%