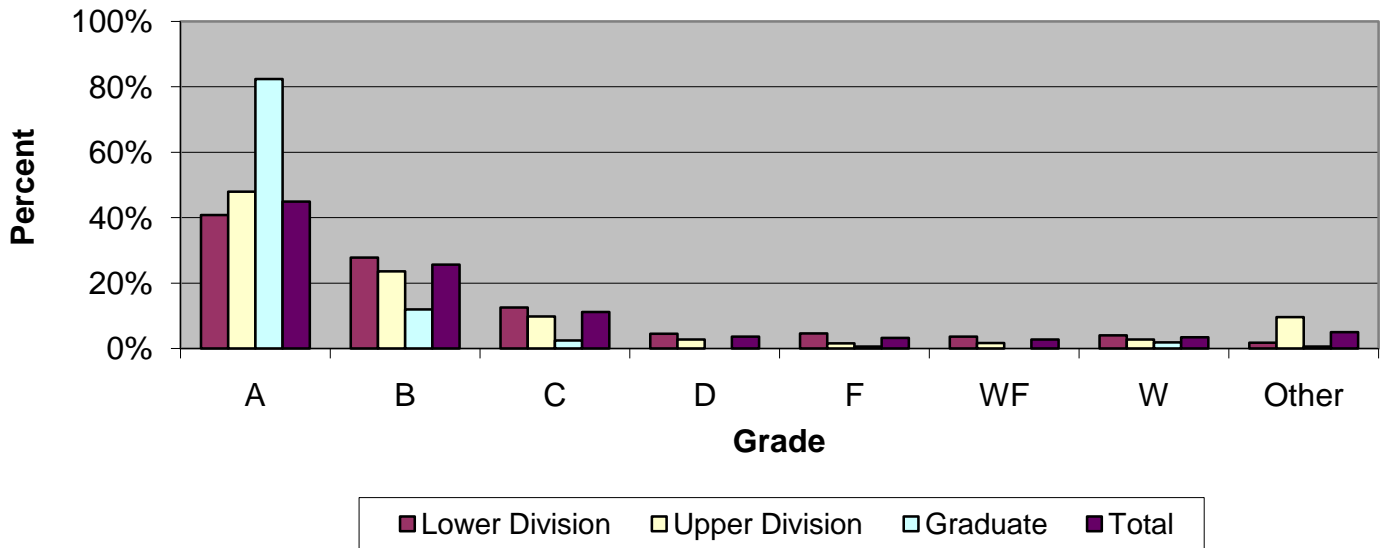


CSU Facts & Figures 2010: Grade Distribution

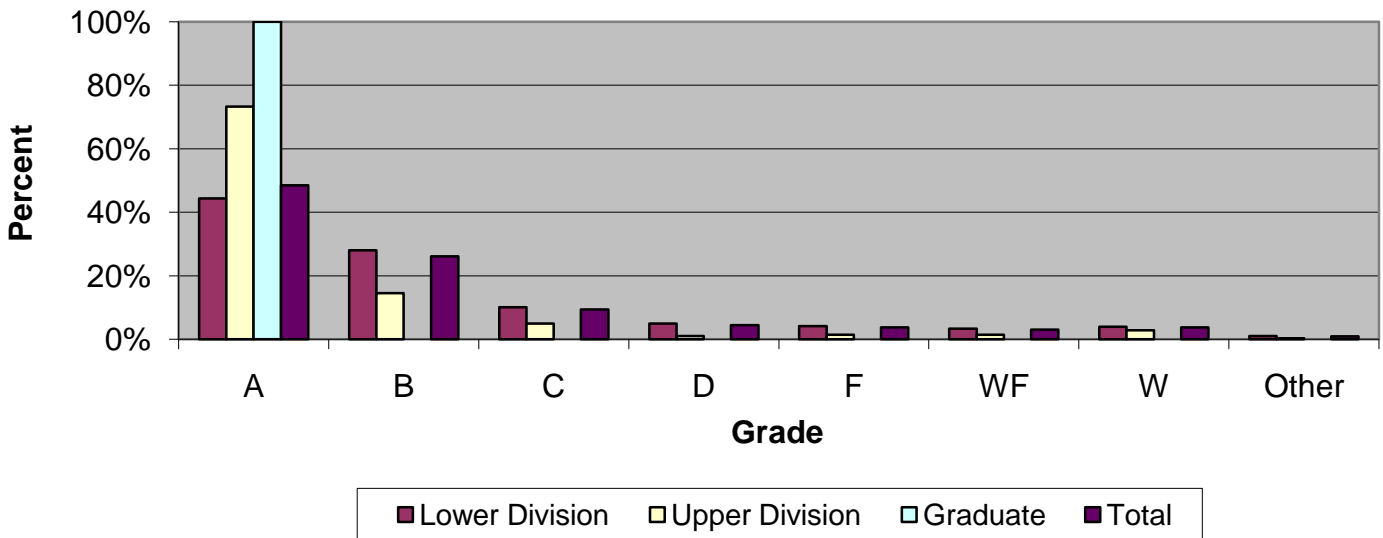
Grade Distribution of Full-Time Faculty for 2009-10 College of the Arts



Grade Distribution by Level of Instruction - College of the Arts

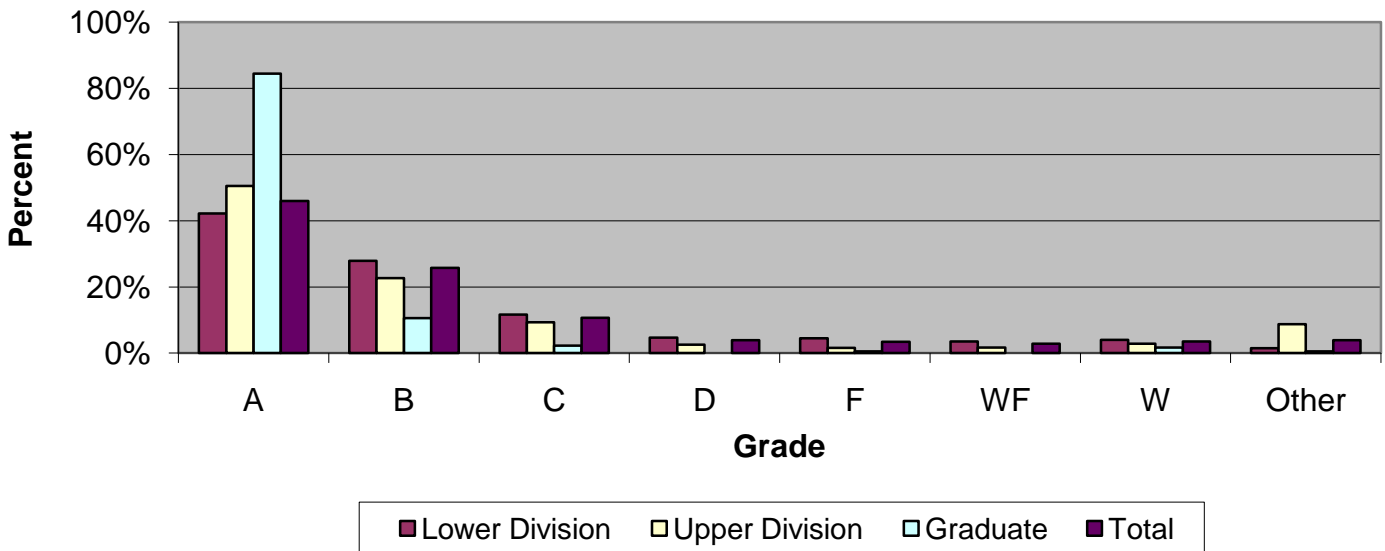
Full-Time Faculty	A's	B's	C's	D's	F's	WF's	W's	Other	Total
<i>2006-2007</i>									
Lower Division	1,210	884	425	129	151	89	270	28	3,186
Percent	38.0%	27.7%	13.3%	4.0%	4.7%	2.8%	8.5%	0.9%	100.0%
Upper Division	1,077	592	244	61	51	36	121	124	2,306
Percent	46.7%	25.7%	10.6%	2.6%	2.2%	1.6%	5.2%	5.4%	100.0%
Graduate	73	13	5	0	2	0	8	4	105
Percent	69.5%	12.4%	4.8%	0.0%	1.9%	0.0%	7.6%	3.8%	100.0%
Total	2,360	1,489	674	190	204	125	399	156	5,597
Percent	42.2%	26.6%	12.0%	3.4%	3.6%	2.2%	7.1%	2.8%	100.0%
<i>2007-2008</i>									
Lower Division	1,143	980	404	155	139	145	145	17	3,128
Percent	36.5%	31.3%	12.9%	5.0%	4.4%	4.6%	4.6%	0.5%	100.0%
Upper Division	1,126	538	257	61	51	48	54	146	2,281
Percent	49.4%	23.6%	11.3%	2.7%	2.2%	2.1%	2.4%	6.4%	100.0%
Graduate	90	19	5	1	4	0	3	1	123
Percent	73.2%	15.4%	4.1%	0.8%	3.3%	0.0%	2.4%	0.8%	100.0%
Total	2,359	1,537	666	217	194	193	202	164	5,532
Percent	42.6%	27.8%	12.0%	3.9%	3.5%	3.5%	3.7%	3.0%	100.0%
<i>2008-2009</i>									
Lower Division	1,218	781	430	171	181	105	152	46	3,084
Percent	39.5%	25.3%	13.9%	5.5%	5.9%	3.4%	4.9%	1.5%	100.0%
Upper Division	1,261	605	238	43	46	25	72	196	2,486
Percent	50.7%	24.3%	9.6%	1.7%	1.9%	1.0%	2.9%	7.9%	100.0%
Graduate	69	9	0	0	1	1	4	0	84
Percent	82.1%	10.7%	0.0%	0.0%	1.2%	1.2%	4.8%	0.0%	100.0%
Total	2,548	1,395	668	214	228	131	228	242	5,654
Percent	45.1%	24.7%	11.8%	3.8%	4.0%	2.3%	4.0%	4.3%	100.0%
<i>2009-2010</i>									
Lower Division	1,338	913	413	148	153	120	134	59	3,278
Percent	40.8%	27.9%	12.6%	4.5%	4.7%	3.7%	4.1%	1.8%	100.0%
Upper Division	1,204	592	246	69	41	44	71	242	2,509
Percent	48.0%	23.6%	9.8%	2.8%	1.6%	1.8%	2.8%	9.6%	100.0%
Graduate	131	19	4	0	1	0	3	1	159
Percent	82.4%	11.9%	2.5%	0.0%	0.6%	0.0%	1.9%	0.6%	100.0%
Total	2,673	1,524	663	217	195	164	208	302	5,946
Percent	45.0%	25.6%	11.2%	3.6%	3.3%	2.8%	3.5%	5.1%	100.0%

Grade Distribution of Part-Time Faculty for 2009-10
College of the Arts



Grade Distribution by Level of Instruction - College of the Arts									
Part-Time Faculty	A's	B's	C's	D's	F's	WF's	W's	Other	Total
<i>2006-2007</i>									
Lower Division	798	669	269	98	115	79	235	11	2,274
Percent	35.1%	29.4%	11.8%	4.3%	5.1%	3.5%	10.3%	0.5%	100.0%
Upper Division	239	83	19	6	0	6	19	4	376
Percent	63.6%	22.1%	5.1%	1.6%	0.0%	1.6%	5.1%	1.1%	100.0%
Graduate	6	1	0	0	0	0	0	0	7
Percent	85.7%	12.5%	0.0%	0.0%	0.0%	0.0%	0.0%	0.0%	98.2%
Total	1,043	753	288	104	115	85	254	15	2,657
Percent	39.3%	28.3%	10.8%	3.9%	4.3%	3.2%	9.6%	0.6%	100.0%
<i>2007-2008</i>									
Lower Division	775	632	317	120	143	108	118	15	2,228
Percent	34.8%	28.4%	14.2%	5.4%	6.4%	4.8%	5.3%	0.7%	100.0%
Upper Division	170	48	16	5	4	2	5	6	256
Percent	66.4%	18.8%	6.3%	2.0%	1.6%	0.8%	2.0%	2.3%	100.0%
Graduate	6	1	0	0	0	0	1	0	8
Percent	75.0%	12.5%	0.0%	0.0%	0.0%	0.0%	12.5%	0.0%	100.0%
Total	951	681	333	125	147	110	124	21	2,492
Percent	38.2%	27.3%	13.4%	5.0%	5.9%	4.4%	5.0%	0.8%	100.0%
<i>2008-2009</i>									
Lower Division	636	525	294	129	177	132	120	11	2,024
Percent	31.4%	25.9%	14.5%	6.4%	8.7%	6.5%	5.9%	0.5%	100.0%
Upper Division	169	65	18	2	7	0	6	6	273
Percent	61.9%	23.8%	6.6%	0.7%	2.6%	0.0%	2.2%	2.2%	100.0%
Graduate	8	0	0	0	0	0	1	0	9
Percent	88.9%	0.0%	0.0%	0.0%	0.0%	0.0%	11.1%	0.0%	100.0%
Total	813	590	312	131	184	132	127	17	2,306
Percent	35.3%	25.6%	13.5%	5.7%	8.0%	5.7%	5.5%	0.7%	100.0%
<i>2009-2010</i>									
Lower Division	880	555	201	98	83	66	78	21	1,982
Percent	44.4%	28.0%	10.1%	4.9%	4.2%	3.3%	3.9%	1.1%	100.0%
Upper Division	206	41	14	3	4	4	8	1	281
Percent	73.3%	14.6%	5.0%	1.1%	1.4%	1.4%	2.8%	0.4%	100.0%
Graduate	21	0	0	0	0	0	0	0	21
Percent	100.0%	0.0%	0.0%	0.0%	0.0%	0.0%	0.0%	0.0%	100.0%
Total	1,107	596	215	101	87	70	86	22	2,284
Percent	48.5%	26.1%	9.4%	4.4%	3.8%	3.1%	3.8%	1.0%	100.0%

Grade Distribution of All Faculty for 2009-10
College of the Arts



Grade Distribution by Level of Instruction - College of the Arts

All Faculty	A's	B's	C's	D's	F's	WF's	W's	Other	Total
<i>2006-2007</i>									
Lower Division	2,008	1,553	694	227	266	168	505	39	5,460
Percent	36.8%	28.4%	12.7%	4.2%	4.9%	3.1%	9.2%	0.7%	100.0%
Upper Division	1,316	675	263	67	51	42	140	128	2,682
Percent	49.1%	25.2%	9.8%	2.5%	1.9%	1.6%	5.2%	4.8%	100.0%
Graduate	79	14	5	0	2	0	8	4	112
Percent	70.5%	12.5%	4.5%	0.0%	1.8%	0.0%	7.1%	3.6%	100.0%
Total	3,403	2,242	962	294	319	210	653	171	8,254
Percent	41.2%	27.2%	11.7%	3.6%	3.9%	2.5%	7.9%	2.1%	100.0%
<i>2007-2008</i>									
Lower Division	1,918	1,612	721	275	282	253	263	32	5,356
Percent	35.8%	30.1%	13.5%	5.1%	5.3%	4.7%	4.9%	0.6%	100.0%
Upper Division	1,296	586	273	66	55	50	59	152	2,537
Percent	51.1%	23.1%	10.8%	2.6%	2.2%	2.0%	2.3%	6.0%	100.0%
Graduate	96	20	5	1	4	0	4	1	131
Percent	73.3%	15.3%	3.8%	0.8%	3.1%	0.0%	3.1%	0.8%	100.0%
Total	3,310	2,218	999	342	341	303	326	185	8,024
Percent	41.3%	27.6%	12.5%	4.3%	4.2%	3.8%	4.1%	2.3%	100.0%
<i>2008-2009</i>									
Lower Division	1,854	1,306	724	300	358	237	272	57	5,108
Percent	36.3%	25.6%	14.2%	5.9%	7.0%	4.6%	5.3%	1.1%	100.0%
Upper Division	1,430	670	256	45	53	25	78	202	2,759
Percent	51.8%	24.3%	9.3%	1.6%	1.9%	0.9%	2.8%	7.3%	100.0%
Graduate	77	9	0	0	1	1	5	0	93
Percent	82.8%	9.7%	0.0%	0.0%	1.1%	1.1%	5.4%	0.0%	100.0%
Total	3,361	1,985	980	345	412	263	355	259	7,960
Percent	42.2%	24.9%	12.3%	4.3%	5.2%	3.3%	4.5%	3.3%	100.0%
<i>2009-2010</i>									
Lower Division	2,218	1,468	614	246	236	186	212	80	5,260
Percent	42.2%	27.9%	11.7%	4.7%	4.5%	3.5%	4.0%	1.5%	100.0%
Upper Division	1,410	633	260	72	45	48	79	243	2,790
Percent	50.5%	22.7%	9.3%	2.6%	1.6%	1.7%	2.8%	8.7%	100.0%
Graduate	152	19	4	0	1	0	3	1	180
Percent	84.4%	10.6%	2.2%	0.0%	0.6%	0.0%	1.7%	0.6%	100.0%
Total	3,780	2,120	878	318	282	234	294	324	8,230
Percent	45.9%	25.8%	10.7%	3.9%	3.4%	2.8%	3.6%	3.9%	100.0%