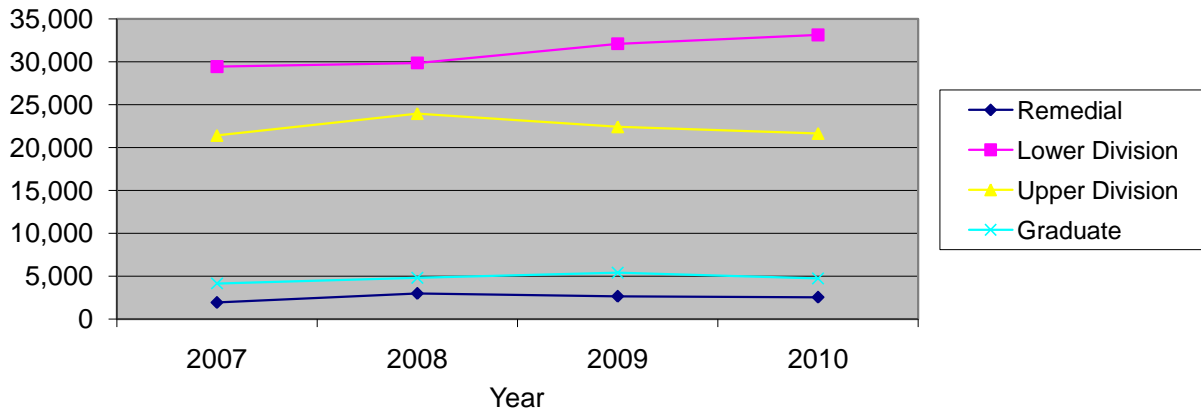


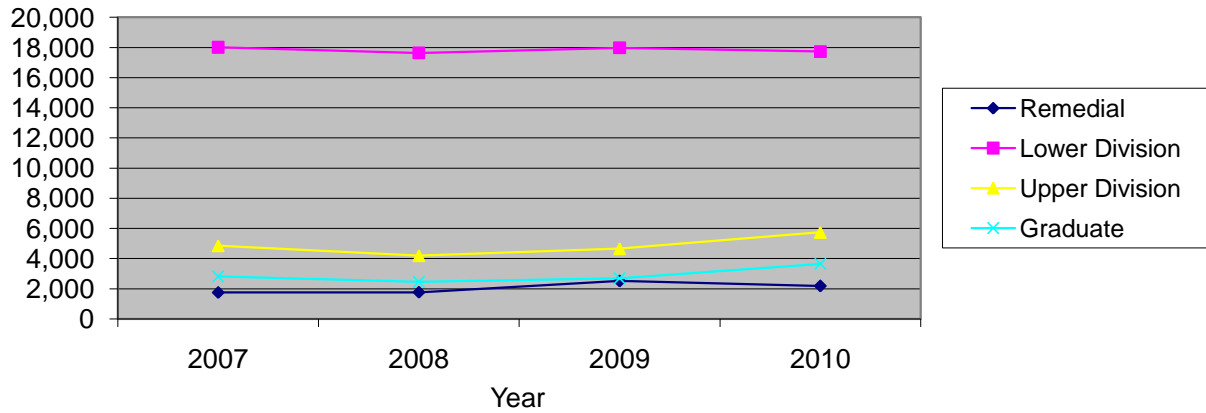
CSU Facts & Figures 2010: Credit Hours Taught

Credit Hours Taught: Full-Time Faculty



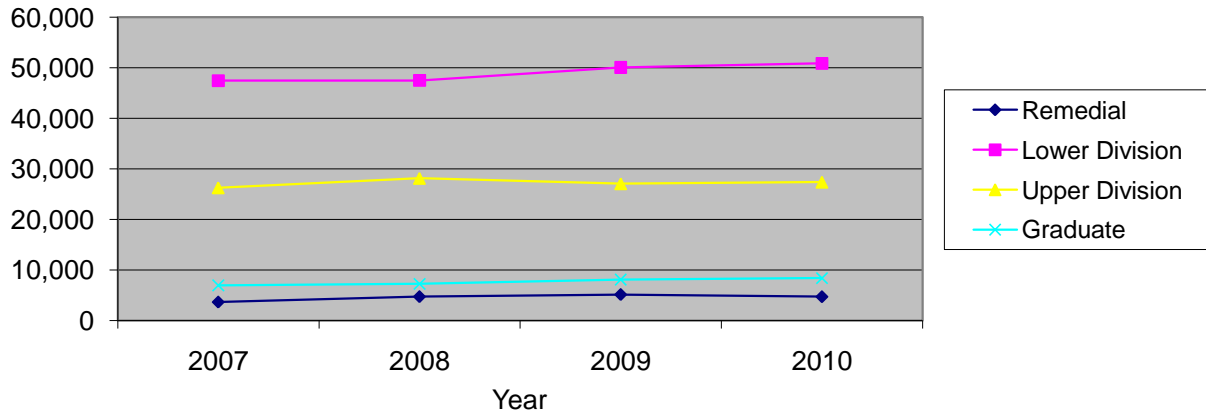
Credit Hours Taught by College and Level of Instruction								
Full-Time Faculty	Fall 2007		Fall 2008		Fall 2009		Fall 2010	
	# Sections	SCH	# Sections	SCH	# Sections	SCH	# Sections	SCH
<i>the Arts</i>								
Lower Division	96	3,606	106	3,037	114	3,368	111	3,450
Upper Division	148	2,321	161	2,621	173	2,678	163	2,505
Graduate	27	100	23	87	40	161	43	183
<i>College Total</i>	271	6,027	290	5,745	327	6,207	317	6,138
<i>% of Univ Total</i>	23.6%	10.6%	24.1%	9.3%	25.5%	9.9%	25.7%	9.9%
<i>Business & Computer Science</i>								
Lower Division	38	4,182	34	4,605	45	4,852	41	4,395
Upper Division	77	6,477	90	7,049	92	6,320	96	5,952
Graduate	22	801	21	990	28	966	29	924
<i>College Total</i>	137	11,460	145	12,644	165	12,138	166	11,271
<i>% of Univ Total</i>	12.0%	20.1%	12.0%	20.5%	12.9%	19.4%	13.5%	18.2%
<i>Education & Health Professions</i>								
Lower Division	50	2,504	38	2,461	45	2,784	35	2,150
Upper Division	98	5,622	104	6,382	96	6,199	92	5,888
Graduate	70	2,449	77	2,611	86	3,239	81	2,698
<i>College Total</i>	218	10,575	219	11,454	227	12,222	208	10,736
<i>% of Univ Total</i>	19.0%	18.6%	18.2%	18.6%	17.7%	19.5%	16.9%	17.3%
<i>Letters & Sciences</i>								
Remedial	2	110	2	66	1	50	0	0
Lower Division	226	18,447	223	19,087	265	20,560	254	22,480
Upper Division	197	6,790	209	7,631	196	6,944	184	7,012
Graduate	41	792	50	1,108	49	1,031	46	929
<i>College Total</i>	466	26,139	484	27,892	511	28,585	484	30,421
<i>% of Univ Total</i>	40.7%	45.9%	40.2%	45.3%	39.9%	45.7%	39.3%	49.0%
<i>Other</i>								
Remedial	21	1,804	29	2,900	23	2,584	22	2,528
Lower Division	24	716	25	685	18	549	25	679
Upper Division	9	219	13	277	11	285	11	299
<i>Total</i>	54	2,739	67	3,862	52	3,418	58	3,506
<i>% of Univ Total</i>	4.7%	4.8%	5.6%	6.3%	4.1%	5.5%	4.7%	5.6%
<i>University Total</i>								
Remedial	23	1,914	31	2,966	24	2,634	22	2,528
Lower Division	434	29,455	426	29,875	487	32,113	466	33,154
Upper Division	529	21,429	577	23,960	568	22,426	546	21,656
Graduate	160	4,142	171	4,796	203	5,397	199	4,734
<i>Total</i>	1,146	56,940	1,205	61,597	1,282	62,570	1,233	62,072

Credit Hours Taught: Part-Time Faculty



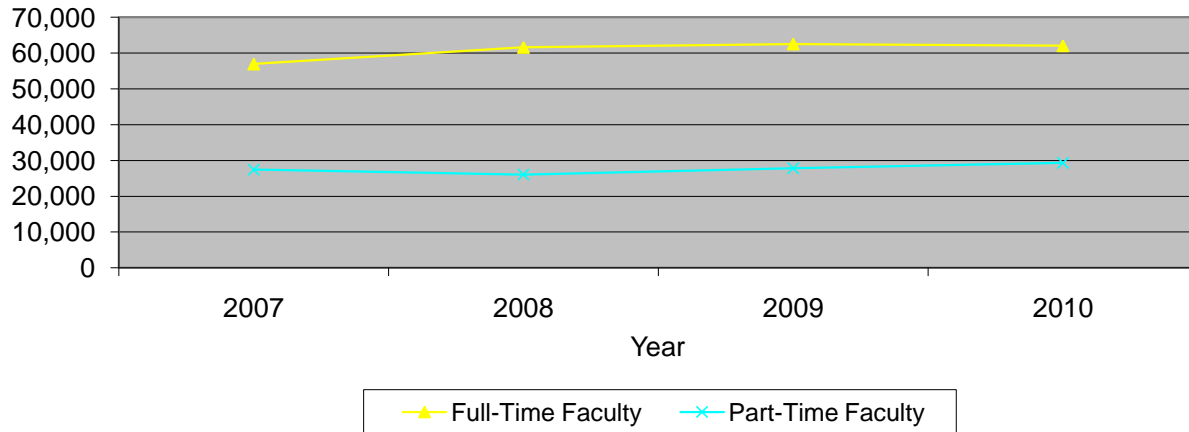
Credit Hours Taught by College and Level of Instruction								
Part-Time Faculty	Fall 2007		Fall 2008		Fall 2009		Fall 2010	
	# Sections	SCH	# Sections	SCH	# Sections	SCH	# Sections	SCH
<i>the Arts</i>								
Lower Division	59	2,922	54	2,814	48	2,635	52	2,437
Upper Division	28	268	26	384	15	159	21	166
Graduate	1	1	6	14	0	0	3	7
<i>College Total</i>	88	3,191	86	3,212	63	2,794	76	2,610
<i>% of Univ Total</i>	15.5%	11.6%	15.3%	12.3%	11.5%	10.0%	13.3%	8.9%
<i>Business & Computer Science</i>								
Lower Division	15	1,506	16	1,415	5	314	12	1,401
Upper Division	3	186	2	150	4	234	1	99
Graduate	0	0	0	0	0	0	10	135
<i>College Total</i>	18	1,692	18	1,565	9	548	23	1,635
<i>% of Univ Total</i>	3.2%	6.2%	3.2%	6.0%	1.6%	2.0%	4.0%	5.6%
<i>Education & Health Professions</i>								
Lower Division	54	2,147	59	2,223	67	2,296	59	2,360
Upper Division	44	1,544	37	976	40	1,204	39	1,712
Graduate	29	1,147	28	920	42	1,122	68	1,733
<i>College Total</i>	127	4,838	124	4,119	149	4,622	166	5,805
<i>% of Univ Total</i>	22.4%	17.6%	22.1%	15.8%	27.3%	16.6%	29.0%	19.8%
<i>Letters & Sciences</i>								
Remedial	2	96	3	84	3	166	2	24
Lower Division	164	10,119	164	9,845	110	9,042	103	8,899
Upper Division	57	2,856	58	2,688	71	3,015	83	3,763
Graduate	41	1,671	41	1,521	40	1,572	49	1,776
<i>College Total</i>	264	14,742	266	14,138	224	13,795	237	14,462
<i>% of Univ Total</i>	46.5%	53.7%	47.4%	54.3%	41.0%	49.6%	41.4%	49.3%
<i>Other</i>								
Remedial	24	1,650	25	1,680	30	2,344	25	2,160
Lower Division	47	1,325	42	1,345	69	3,690	46	2,637
Upper Division	0	0	0	0	2	46	0	0
<i>Total</i>	71	2,975	67	3,025	101	6,080	71	4,797
<i>% of Univ Total</i>	12.5%	10.8%	11.9%	11.6%	18.5%	21.8%	12.4%	16.4%
<i>University Total</i>								
Remedial	26	1,746	28	1,764	33	2,510	27	2,184
Lower Division	339	18,019	335	17,642	299	17,977	272	17,734
Upper Division	132	4,854	123	4,198	132	4,658	144	5,740
Graduate	71	2,819	75	2,455	82	2,694	130	3,651
<i>Total</i>	568	27,438	561	26,059	546	27,839	573	29,309

Credit Hours Taught: All Faculty



Credit Hours Taught by College and Level of Instruction								
All Faculty	Fall 2007		Fall 2008		Fall 2009		Fall 2010	
	# Sections	SCH	# Sections	SCH	# Sections	SCH	# Sections	SCH
<i>the Arts</i>								
Lower Division	155	6,528	160	5,851	162	6,003	163	5,887
Upper Division	176	2,589	187	3,005	188	2,837	184	2,671
Graduate	28	101	29	101	40	161	46	190
<i>College Total</i>	359	9,218	376	8,957	390	9,001	393	8,748
<i>% of Univ Total</i>	20.9%	10.9%	21.3%	10.2%	21.3%	10.0%	21.8%	9.6%
<i>Business & Computer Science</i>								
Lower Division	53	5,688	50	6,020	50	5,166	53	5,796
Upper Division	80	6,663	92	7,199	96	6,554	97	6,051
Graduate	22	801	21	990	28	966	39	1,059
<i>College Total</i>	155	13,152	163	14,209	174	12,686	189	12,906
<i>% of Univ Total</i>	9.0%	15.6%	9.2%	16.2%	9.5%	14.0%	10.5%	14.1%
<i>Education & Health Professions</i>								
Lower Division	104	4,651	97	4,684	112	5,080	94	4,510
Upper Division	142	7,166	141	7,358	136	7,403	131	7,600
Graduate	99	3,596	105	3,531	128	4,361	149	4,431
<i>College Total</i>	345	15,413	343	15,573	376	16,844	374	16,541
<i>% of Univ Total</i>	20.1%	18.3%	19.4%	17.8%	20.6%	18.6%	20.7%	18.1%
<i>Letters & Sciences</i>								
Remedial	4	206	5	150	4	216	2	24
Lower Division	390	28,566	387	28,932	375	29,602	357	31,379
Upper Division	254	9,646	267	10,319	267	9,959	267	10,775
Graduate	82	2,463	91	2,629	89	2,603	95	2,705
<i>College Total</i>	730	40,881	750	42,030	735	42,380	721	44,883
<i>% of Univ Total</i>	42.6%	48.4%	42.5%	47.9%	40.2%	46.9%	39.9%	49.1%
<i>Other</i>								
Remedial	45	3,454	54	4,580	53	4,928	47	4,688
Lower Division	71	2,041	67	2,030	87	4,239	71	3,316
Upper Division	9	219	13	277	13	331	11	299
<i>Total</i>	125	5,714	134	6,887	153	9,498	129	8,303
<i>% of Univ Total</i>	7.3%	6.8%	7.6%	7.9%	8.4%	10.5%	7.1%	9.1%
<i>University Total</i>								
Remedial	49	3,660	59	4,730	57	5,144	49	4,712
Lower Division	773	47,474	761	47,517	786	50,090	738	50,888
Upper Division	661	26,283	700	28,158	700	27,084	690	27,396
Graduate	231	6,961	246	7,251	285	8,091	329	8,385
<i>Total</i>	1,714	84,378	1,766	87,656	1,828	90,409	1,806	91,381

Credit Hours Taught by Faculty Status



Credit Hours Taught by College and Faculty Status								
All Faculty	Fall 2007		Fall 2008		Fall 2009		Fall 2010	
	# Sections	SCH	# Sections	SCH	# Sections	SCH	# Sections	SCH
<i>the Arts</i>								
Full-Time Faculty	271	6,027	290	5,745	327	6,207	317	6,138
Part-Time Faculty	88	3,191	86	3,212	63	2,794	76	2,610
<i>College Total</i>	359	9,218	376	8,957	390	9,001	393	8,748
<i>% of Univ Total</i>	20.9%	10.9%	21.3%	10.2%	21.3%	10.0%	21.8%	9.6%
<i>Business & Computer Science</i>								
Full-Time Faculty	137	11,460	145	12,644	165	12,138	166	11,271
Part-Time Faculty	18	1,692	18	1,565	9	548	23	1,635
<i>College Total</i>	155	13,152	163	14,209	174	12,686	189	12,906
<i>% of Univ Total</i>	9.0%	15.6%	9.2%	16.2%	9.5%	14.0%	10.5%	14.1%
<i>Education & Health Professions</i>								
Full-Time Faculty	218	10,575	219	11,454	227	12,222	208	10,736
Part-Time Faculty	127	4,838	124	4,119	149	4,622	166	5,805
<i>College Total</i>	345	15,413	343	15,573	376	16,844	374	16,541
<i>% of Univ Total</i>	20.1%	18.3%	19.4%	17.8%	20.6%	18.6%	20.7%	18.1%
<i>Letters & Sciences</i>								
Full-Time Faculty	466	26,139	484	27,892	511	28,585	484	30,421
Part-Time Faculty	264	14,742	266	14,138	224	13,795	237	14,462
<i>College Total</i>	730	40,881	750	42,030	735	42,380	721	44,883
<i>% of Univ Total</i>	42.6%	48.4%	42.5%	47.9%	40.2%	46.9%	39.9%	49.1%
<i>Other</i>								
Full-Time Faculty	54	2,739	67	3,862	52	3,418	58	3,506
Part-Time Faculty	71	2,975	67	3,025	101	6,080	71	4,797
<i>Total</i>	125	5,714	134	6,887	153	9,498	129	8,303
<i>% of Univ Total</i>	7.3%	6.8%	7.6%	7.9%	8.4%	10.5%	7.1%	9.1%
<i>University Total</i>								
Full-Time Faculty	1,146	56,940	1,205	61,597	1,282	62,570	1,233	62,072
Part-Time Faculty	568	27,438	561	26,059	546	27,839	573	29,309
<i>Total</i>	1,714	84,378	1,766	87,656	1,828	90,409	1,806	91,381