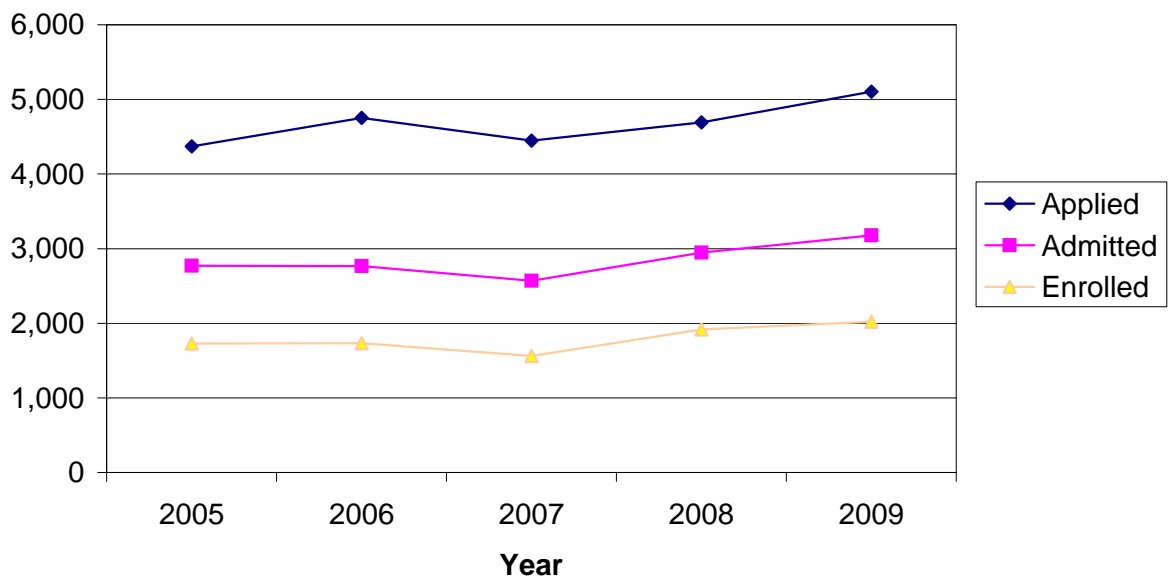


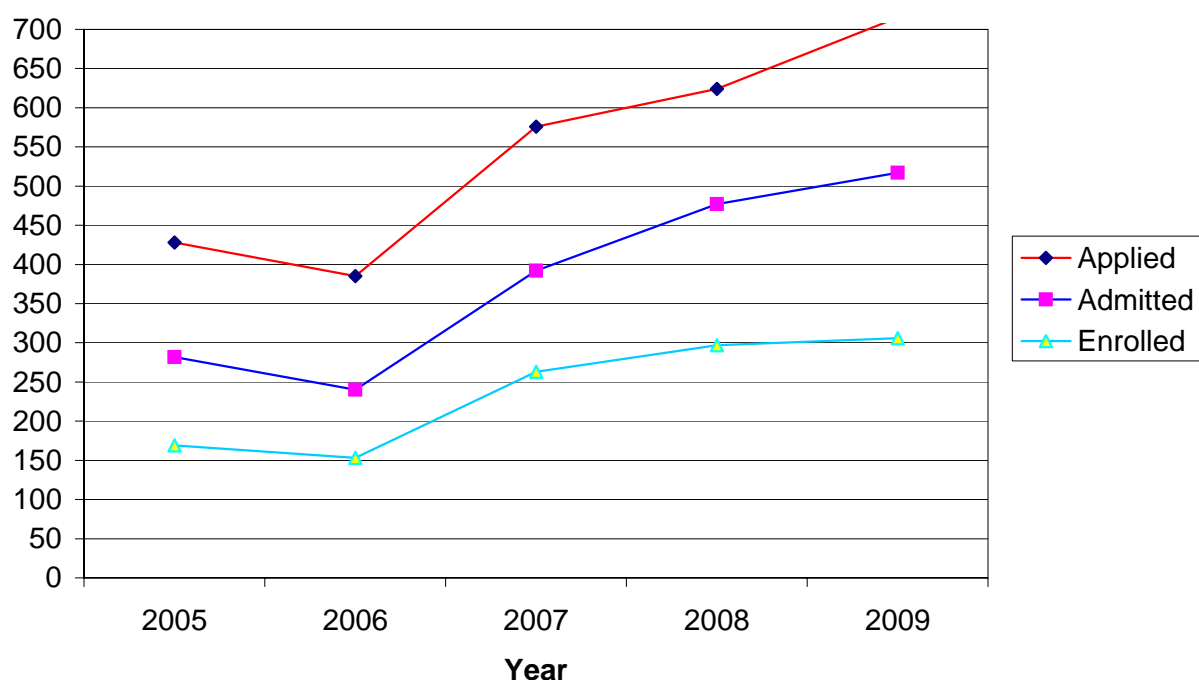
CSU Facts & Figures 2009: Applications Received

Undergraduate Applications Received



Undergraduate Applications Received							
	Fall 2005	Fall 2006	Fall 2007	Fall 2008	Fall 2009	4-Year # Change	4-Year % Change
Applied							
Entering Freshmen	3,007	3,307	3,093	3,085	3,439	432	14.4%
Transfer Students	1,291	1,372	1,282	1,434	1,539	248	19.2%
Other New Students	74	75	71	175	125	51	68.9%
<i>Total</i>	4,372	4,754	4,446	4,694	5,103	731	16.7%
Accepted							
Entering Freshmen	1,844	1,833	1,681	1,848	2,027	183	9.9%
Transfer Students	872	884	838	951	1,066	194	22.2%
Other New Students	56	50	49	148	86	30	53.6%
<i>Total</i>	2,772	2,767	2,568	2,947	3,179	407	14.7%
Enrolled							
Entering Freshmen	1,184	1,167	1,035	1,244	1,319	135	11.4%
Transfer Students	512	526	492	566	631	119	23.2%
Other New Students	34	40	35	107	70	36	105.9%
<i>Total</i>	1,730	1,733	1,562	1,917	2,020	290	16.8%

Graduate Applications Received



Graduate Applications Received							
	Fall 2005	Fall 2006	Fall 2007	Fall 2008	Fall 2009	4-Year # Change	4-Year % Change
Applied							
MBA	36	35	55	46	53	17	47.2%
MEd/MAT/MS - Education	161	145	229	279	320	159	98.8%
MPA	142	120	125	109	124	-18	-12.7%
MM	10	11	13	12	15	5	50.0%
MS-Environmental Science	9	6	5	15	16	7	77.8%
MS-Computer Science	40	39	50	64	74	34	85.0%
EdS	19	22	92	95	101	82	431.6%
Graduate-Other	11	7	7	4	12	1	9.1%
<i>Total</i>	428	385	576	624	715	158	36.9%
Accepted							
MBA	19	14	28	28	25	6	31.6%
MEd/MAT/MS - Education	89	73	142	202	210	121	136.0%
MPA	118	91	92	97	114	-4	-3.4%
MM	6	5	8	3	5	-1	-16.7%
MS-Environmental Science	5	5	4	14	11	6	120.0%
MS-Computer Science	27	31	34	52	53	26	96.3%
EdS	7	16	78	79	90	83	1185.7%
Graduate-Other	11	5	6	2	9	-2	-18.2%
<i>Total</i>	282	240	392	477	517	107	37.9%
Enrolled							
MBA	17	14	21	22	17	0	0.0%
MEd/MAT/MS - Education	45	41	89	111	117	72	160.0%
MPA	77	62	64	68	75	-2	-2.6%
MM	6	4	5	2	5	-1	-16.7%
MS-Environmental Science	2	4	3	12	5	3	150.0%
MS-Computer Science	14	22	22	41	30	16	114.3%
EdS	3	4	53	40	50	47	1566.7%
Graduate-Other	5	2	6	1	7	2	40.0%
<i>Total</i>	169	153	263	297	306	137	81.1%