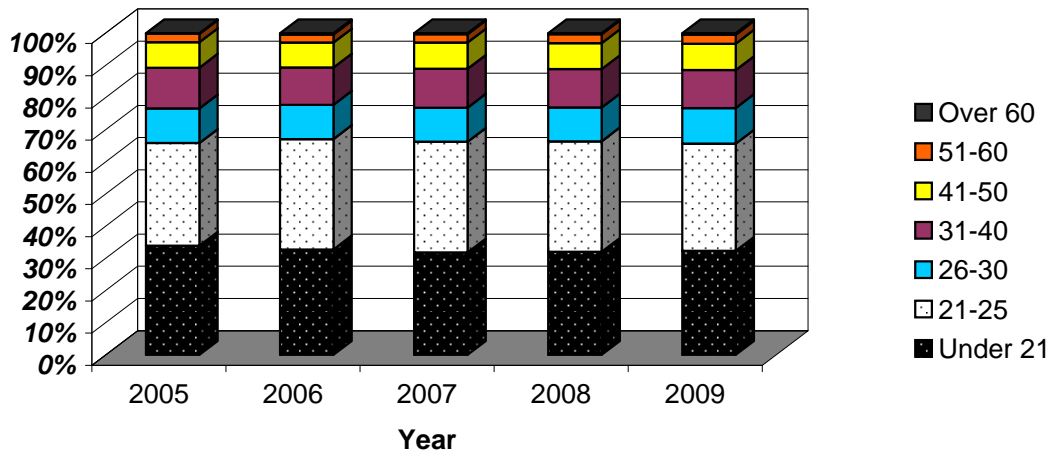


## CSU Facts & Figures 2009: Enrollment by Age Group

### Enrollment Percentages by Age Group



Enrollment by Age Group							
	Fall 2005	Fall 2006	Fall 2007	Fall 2008	Fall 2009	4-Year # Change	4-Year % Change
<b>Undergraduate</b>							
Under 21	2,537	2,490	2,416	2,550	2,645	108	4.3%
21 - 25	2,234	2,454	2,459	2,530	2,505	271	12.1%
26 - 30	655	646	591	625	642	-13	-2.0%
31 - 40	700	650	584	621	644	-56	-8.0%
41 - 50	377	393	375	388	392	15	4.0%
51 - 60	106	107	104	109	116	10	9.4%
Over 60	15	24	19	15	25	10	66.7%
<i>Total</i>	<i>6,624</i>	<i>6,764</i>	<i>6,548</i>	<i>6,838</i>	<i>6,969</i>	<i>345</i>	<i>5.2%</i>
<i>Average Age</i>	<i>24.8</i>	<i>24.8</i>	<i>24.7</i>	<i>24.6</i>	<i>24.7</i>		
<b>Graduate</b>							
Under 21	0	1	0	0	1		
21 - 25	152	153	154	203	218	66	43.4%
26 - 30	147	164	214	210	268	121	82.3%
31 - 40	250	229	330	327	320	70	28.0%
41 - 50	213	198	246	254	278	65	30.5%
51 - 60	85	80	91	109	111	26	30.6%
Over 60	4	8	7	12	14	10	250.0%
<i>Total</i>	<i>851</i>	<i>833</i>	<i>1,042</i>	<i>1,115</i>	<i>1,210</i>	<i>359</i>	<i>42.2%</i>
<i>Average Age</i>	<i>36.5</i>	<i>36.2</i>	<i>36.3</i>	<i>36.2</i>	<i>36.0</i>		
<b>Combined</b>							
Under 21	2,537	2,490	2,416	2,550	2,646	108	4.3%
21 - 25	2,386	2,607	2,613	2,733	2,723	337	14.1%
26 - 30	802	810	805	835	910	108	13.5%
31 - 40	950	879	914	948	964	14	1.5%
41 - 50	590	591	621	642	670	80	13.6%
51 - 60	191	187	195	218	227	36	18.8%
Over 60	19	32	26	27	39	20	
<i>Total</i>	<i>7,475</i>	<i>7,596</i>	<i>7,590</i>	<i>7,953</i>	<i>8,179</i>	<i>704</i>	<i>9.4%</i>
<i>Average Age</i>	<i>26.6</i>	<i>26.3</i>	<i>26.1</i>	<i>26.2</i>	<i>26.4</i>		