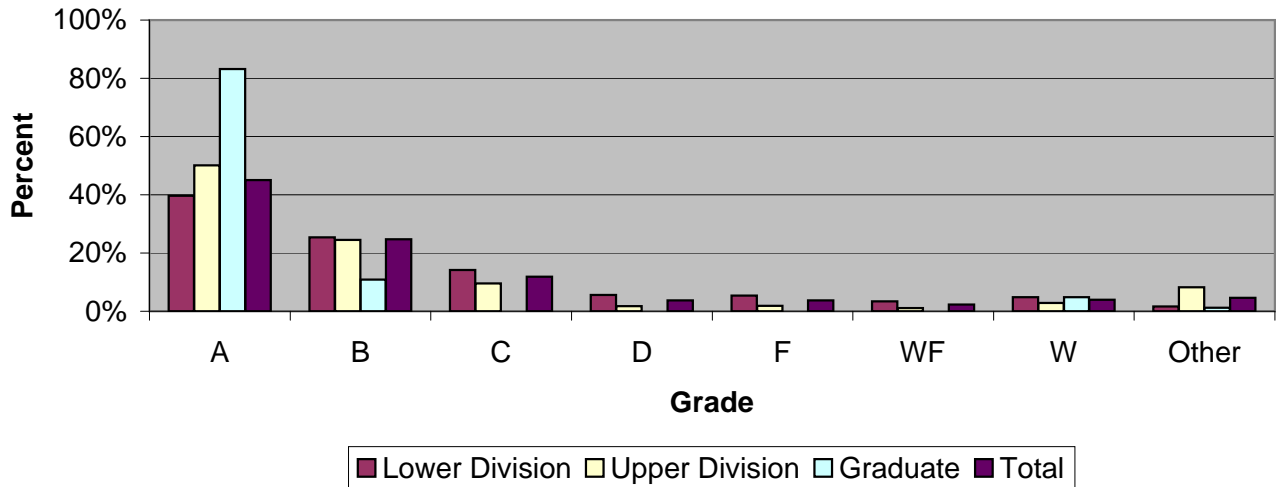


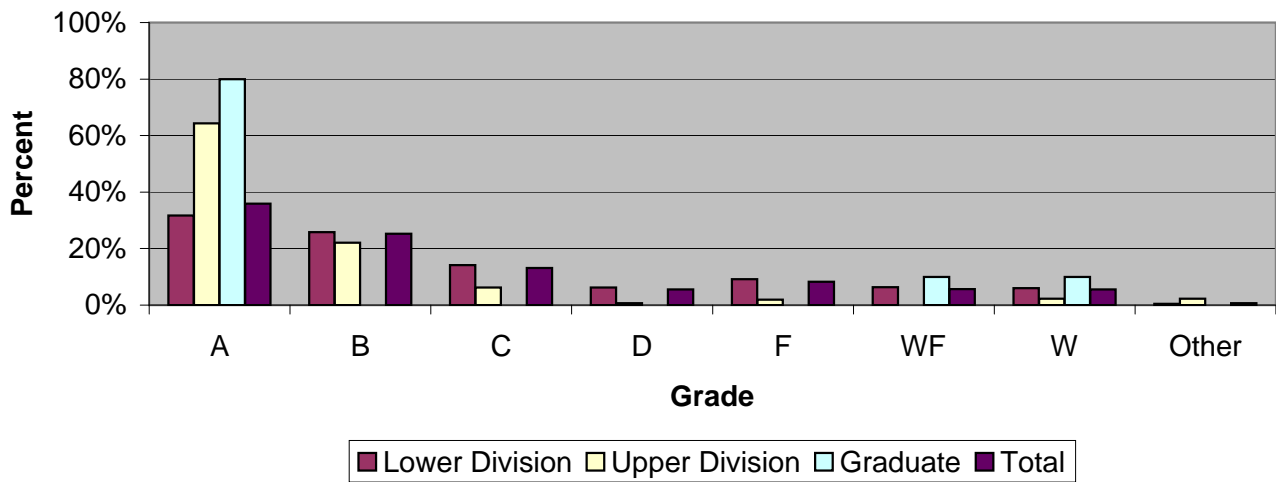
CSU Facts & Figures 2009: Grade Distribution

Grade Distribution of Full-Time Faculty for 2008-09 College of the Arts



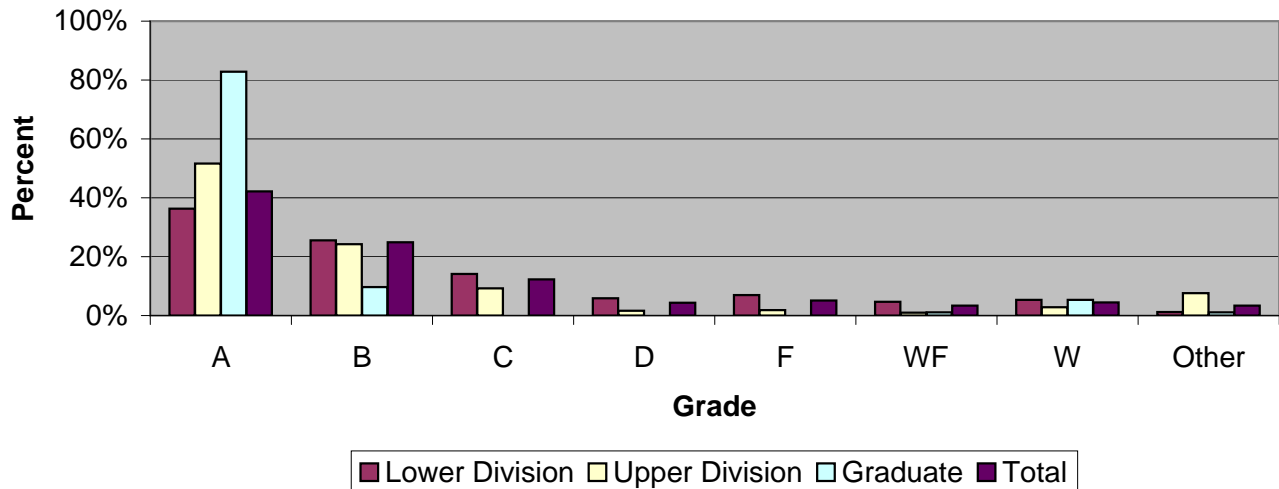
Grade Distribution by Level of Instruction - College of the Arts									
Full-Time Faculty	A's	B's	C's	D's	F's	WF's	W's	Other	Total
<i>2005-2006</i>									
Lower Division	1,196	825	383	135	119	75	323	36	3,092
Percent	38.7%	26.7%	12.4%	4.4%	3.8%	2.4%	10.4%	1.2%	100.0%
Upper Division	1,113	528	226	48	56	26	93	71	2,161
Percent	51.5%	24.4%	10.5%	2.2%	2.6%	1.2%	4.3%	3.3%	100.0%
Graduate	58	11	0	0	1	1	3	4	78
Percent	74.4%	14.1%	0.0%	0.0%	1.3%	1.3%	3.8%	5.1%	100.0%
Total	2,367	1,364	609	183	176	102	419	111	5,331
Percent	44.4%	25.6%	11.4%	3.4%	3.3%	1.9%	7.9%	2.1%	100.0%
<i>2006-2007</i>									
Lower Division	1,210	884	425	129	151	89	270	28	3,186
Percent	38.0%	27.7%	13.3%	4.0%	4.7%	2.8%	8.5%	0.9%	100.0%
Upper Division	1,077	592	244	61	51	36	121	124	2,306
Percent	46.7%	25.7%	10.6%	2.6%	2.2%	1.6%	5.2%	5.4%	100.0%
Graduate	73	13	5	0	2	0	8	4	105
Percent	69.5%	12.4%	4.8%	0.0%	1.9%	0.0%	7.6%	3.8%	100.0%
Total	2,360	1,489	674	190	204	125	399	156	5,597
Percent	42.2%	26.6%	12.0%	3.4%	3.6%	2.2%	7.1%	2.8%	100.0%
<i>2007-2008</i>									
Lower Division	1,143	980	404	155	139	145	145	17	3,128
Percent	36.5%	31.3%	12.9%	5.0%	4.4%	4.6%	4.6%	0.5%	100.0%
Upper Division	1,126	538	257	61	51	48	54	146	2,281
Percent	49.4%	23.6%	11.3%	2.7%	2.2%	2.1%	2.4%	6.4%	100.0%
Graduate	90	19	5	1	4	0	3	1	123
Percent	73.2%	15.4%	4.1%	0.8%	3.3%	0.0%	2.4%	0.8%	100.0%
Total	2,359	1,537	666	217	194	193	202	164	5,532
Percent	42.6%	27.8%	12.0%	3.9%	3.5%	3.5%	3.7%	3.0%	100.0%
<i>2008-2009</i>									
Lower Division	1,169	746	416	164	157	99	142	50	2,943
Percent	39.7%	25.3%	14.1%	5.6%	5.3%	3.4%	4.8%	1.7%	100.0%
Upper Division	1,230	603	236	42	45	26	71	203	2,456
Percent	50.1%	24.6%	9.6%	1.7%	1.8%	1.1%	2.9%	8.3%	100.0%
Graduate	69	9	0	0	0	0	4	1	83
Percent	83.1%	10.8%	0.0%	0.0%	0.0%	0.0%	4.8%	1.2%	100.0%
Total	2,468	1,358	652	206	202	125	217	254	5,482
Percent	45.0%	24.8%	11.9%	3.8%	3.7%	2.3%	4.0%	4.6%	100.0%

Grade Distribution of Part-Time Faculty for 2008-09
College of the Arts



Grade Distribution by Level of Instruction - College of the Arts									
Part-Time Faculty	A's	B's	C's	D's	F's	WF's	W's	Other	Total
<i>2005-2006</i>									
Lower Division	723	531	182	55	46	101	189	3	1,830
Percent	39.5%	29.0%	9.9%	3.0%	2.5%	5.5%	10.3%	0.2%	100.0%
Upper Division	178	40	19	4	4	3	11	12	271
Percent	65.7%	14.8%	7.0%	1.5%	1.5%	1.1%	4.1%	4.4%	100.0%
Graduate	7	0	0	0	0	0	0	0	7
Percent	100.0%	0.0%	0.0%	0.0%	0.0%	0.0%	0.0%	0.0%	100.0%
Total	908	571	201	59	50	104	200	15	2,108
Percent	43.1%	27.1%	9.5%	2.8%	2.4%	4.9%	9.5%	0.7%	100.0%
<i>2006-2007</i>									
Lower Division	798	669	269	98	115	79	235	11	2,274
Percent	35.1%	29.4%	11.8%	4.3%	5.1%	3.5%	10.3%	0.5%	100.0%
Upper Division	239	83	19	6	0	6	19	4	376
Percent	63.6%	22.1%	5.1%	1.6%	0.0%	1.6%	5.1%	1.1%	100.0%
Graduate	6	1	0	0	0	0	0	0	7
Percent	85.7%	12.5%	0.0%	0.0%	0.0%	0.0%	0.0%	0.0%	98.2%
Total	1,043	753	288	104	115	85	254	15	2,657
Percent	39.3%	28.3%	10.8%	3.9%	4.3%	3.2%	9.6%	0.6%	100.0%
<i>2007-2008</i>									
Lower Division	775	632	317	120	143	108	118	15	2,228
Percent	34.8%	28.4%	14.2%	5.4%	6.4%	4.8%	5.3%	0.7%	100.0%
Upper Division	170	48	16	5	4	2	5	6	256
Percent	66.4%	18.8%	6.3%	2.0%	1.6%	0.8%	2.0%	2.3%	100.0%
Graduate	6	1	0	0	0	0	1	0	8
Percent	75.0%	12.5%	0.0%	0.0%	0.0%	0.0%	12.5%	0.0%	100.0%
Total	951	681	333	125	147	110	124	21	2,492
Percent	38.2%	27.3%	13.4%	5.0%	5.9%	4.4%	5.0%	0.8%	100.0%
<i>2008-2009</i>									
Lower Division	685	558	307	136	199	138	130	11	2,164
Percent	31.7%	25.8%	14.2%	6.3%	9.2%	6.4%	6.0%	0.5%	100.0%
Upper Division	195	67	19	2	6	0	7	7	303
Percent	64.4%	22.1%	6.3%	0.7%	2.0%	0.0%	2.3%	2.3%	100.0%
Graduate	8	0	0	0	0	1	1	0	10
Percent	80.0%	0.0%	0.0%	0.0%	0.0%	10.0%	10.0%	0.0%	100.0%
Total	888	625	326	138	205	139	138	18	2,477
Percent	35.8%	25.2%	13.2%	5.6%	8.3%	5.6%	5.6%	0.7%	100.0%

Grade Distribution of All Faculty for 2008-09
College of the Arts



Grade Distribution by Level of Instruction - College of the Arts									
All Faculty	A's	B's	C's	D's	F's	WF's	W's	Other	Total
2005-2006									
Lower Division	1,919	1,356	565	190	165	176	512	39	4,922
Percent	39.0%	27.5%	11.5%	3.9%	3.4%	3.6%	10.4%	0.8%	100.0%
Upper Division	1,291	568	245	52	60	29	104	83	2,432
Percent	53.1%	23.4%	10.1%	2.1%	2.5%	1.2%	4.3%	3.4%	100.0%
Graduate	65	11	0	0	1	1	3	4	85
Percent	76.5%	12.9%	0.0%	0.0%	1.2%	1.2%	3.5%	4.7%	100.0%
Total	3,275	1,935	810	242	226	206	619	126	7,439
Percent	44.0%	26.0%	10.9%	3.3%	3.0%	2.8%	8.3%	1.7%	100.0%
2006-2007									
Lower Division	2,008	1,553	694	227	266	168	505	39	5,460
Percent	36.8%	28.4%	12.7%	4.2%	4.9%	3.1%	9.2%	0.7%	100.0%
Upper Division	1,316	675	263	67	51	42	140	128	2,682
Percent	49.1%	25.2%	9.8%	2.5%	1.9%	1.6%	5.2%	4.8%	100.0%
Graduate	79	14	5	0	2	0	8	4	112
Percent	70.5%	12.5%	4.5%	0.0%	1.8%	0.0%	7.1%	3.6%	100.0%
Total	3,403	2,242	962	294	319	210	653	171	8,254
Percent	41.2%	27.2%	11.7%	3.6%	3.9%	2.5%	7.9%	2.1%	100.0%
2007-2008									
Lower Division	1,918	1,612	721	275	282	253	263	32	5,356
Percent	35.8%	30.1%	13.5%	5.1%	5.3%	4.7%	4.9%	0.6%	100.0%
Upper Division	1,296	586	273	66	55	50	59	152	2,537
Percent	51.1%	23.1%	10.8%	2.6%	2.2%	2.0%	2.3%	6.0%	100.0%
Graduate	96	20	5	1	4	0	4	1	131
Percent	73.3%	15.3%	3.8%	0.8%	3.1%	0.0%	3.1%	0.8%	100.0%
Total	3,310	2,218	999	342	341	303	326	185	8,024
Percent	41.3%	27.6%	12.5%	4.3%	4.2%	3.8%	4.1%	2.3%	100.0%
2008-2009									
Lower Division	1,854	1,304	723	300	356	237	272	61	5,107
Percent	36.3%	25.5%	14.2%	5.9%	7.0%	4.6%	5.3%	1.2%	100.0%
Upper Division	1,425	670	255	44	51	26	78	210	2,759
Percent	51.6%	24.3%	9.2%	1.6%	1.8%	0.9%	2.8%	7.6%	100.0%
Graduate	77	9	0	0	0	1	5	1	93
Percent	82.8%	9.7%	0.0%	0.0%	0.0%	1.1%	5.4%	1.1%	100.0%
Total	3,356	1,983	978	344	407	264	355	272	7,959
Percent	42.2%	24.9%	12.3%	4.3%	5.1%	3.3%	4.5%	3.4%	100.0%