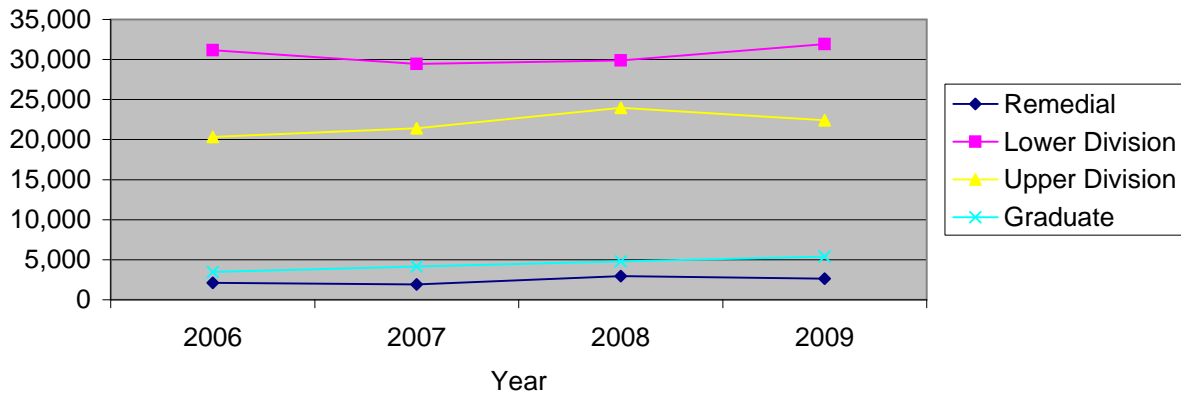


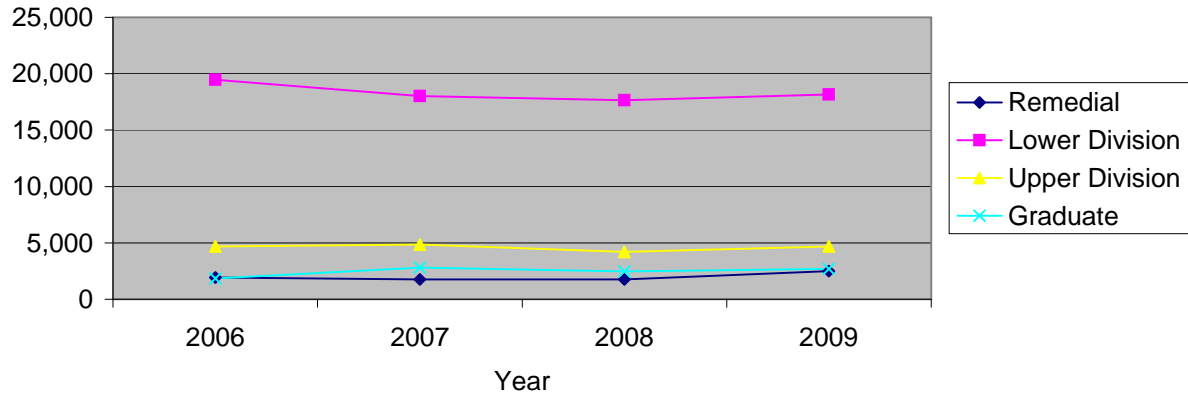
# CSU Facts & Figures 2009: Credit Hours Taught

Credit Hours Taught: Full-Time Faculty



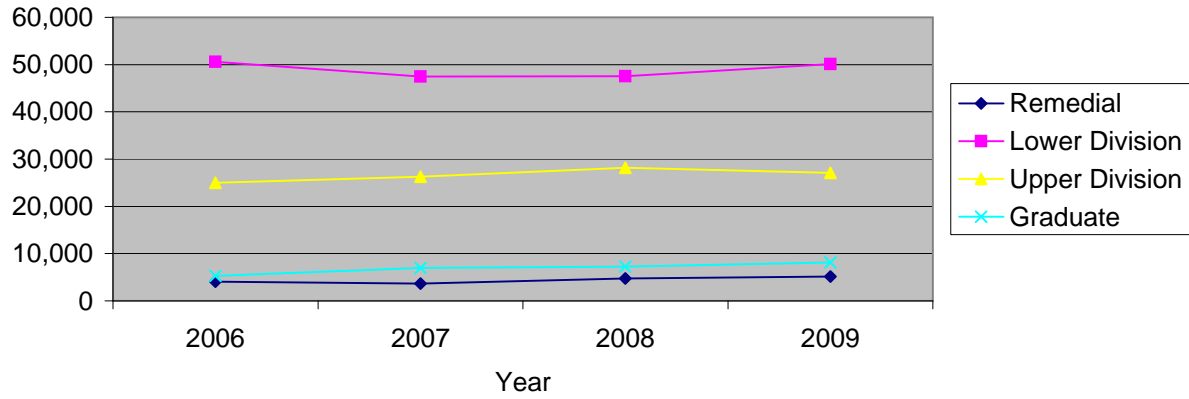
Credit Hours Taught by College and Level of Instruction								
Full-Time Faculty	Fall 2006		Fall 2007		Fall 2008		Fall 2009	
	# Sections	SCH	# Sections	SCH	# Sections	SCH	# Sections	SCH
<i>the Arts</i>								
Lower Division	103	3,635	96	3,606	106	3,037	109	3,163
Upper Division	149	2,390	148	2,321	161	2,621	168	2,663
Graduate	17	154	27	100	23	87	40	161
<i>College Total</i>	269	6,179	271	6,027	290	5,745	317	5,987
<i>% of Univ Total</i>	23.1%	10.8%	23.6%	10.6%	24.1%	9.3%	25.3%	9.6%
<i>Business &amp; Computer Science</i>								
Lower Division	41	4,566	38	4,182	34	4,605	45	4,852
Upper Division	75	5,835	77	6,477	90	7,049	89	6,311
Graduate	19	663	22	801	21	990	28	966
<i>College Total</i>	135	11,064	137	11,460	145	12,644	162	12,129
<i>% of Univ Total</i>	11.6%	19.4%	12.0%	20.1%	12.1%	20.5%	12.9%	19.4%
<i>Education &amp; Health Professions</i>								
Lower Division	54	2,458	50	2,504	38	2,461	45	2,784
Upper Division	118	5,468	98	5,622	104	6,382	96	6,199
Graduate	69	1,911	70	2,449	77	2,611	86	3,250
<i>College Total</i>	241	9,837	218	10,575	219	11,454	227	12,233
<i>% of Univ Total</i>	20.7%	17.2%	19.0%	18.6%	18.2%	18.6%	18.1%	19.6%
<i>Letters &amp; Sciences</i>								
Remedial	25	2,132	23	1,914	31	2,970	24	2,634
Lower Division	242	19,828	227	18,457	224	19,099	264	20,586
Upper Division	188	6,519	197	6,790	207	7,630	184	6,972
Graduate	37	744	41	792	50	1,108	49	1,031
<i>College Total</i>	492	29,223	488	27,953	512	30,807	521	31,223
<i>% of Univ Total</i>	42.2%	51.2%	42.6%	49.1%	42.6%	50.0%	41.5%	50.0%
<i>Other</i>								
Lower Division	23	664	23	706	24	673	17	538
Upper Division	7	121	9	219	13	277	11	285
<i>Total</i>	30	785	32	925	37	950	28	823
<i>% of Univ Total</i>	2.6%	1.4%	2.8%	1.6%	3.1%	1.5%	2.2%	1.3%
<i>University Total</i>								
Remedial	25	2,132	23	1,914	31	2,970	24	2,634
Lower Division	463	31,151	434	29,455	426	29,875	480	31,923
Upper Division	537	20,333	529	21,429	575	23,959	548	22,430
Graduate	142	3,472	160	4,142	171	4,796	203	5,408
<i>Total</i>	1,167	57,088	1,146	56,940	1,203	61,600	1,255	62,395

### Credit Hours Taught: Part-Time Faculty



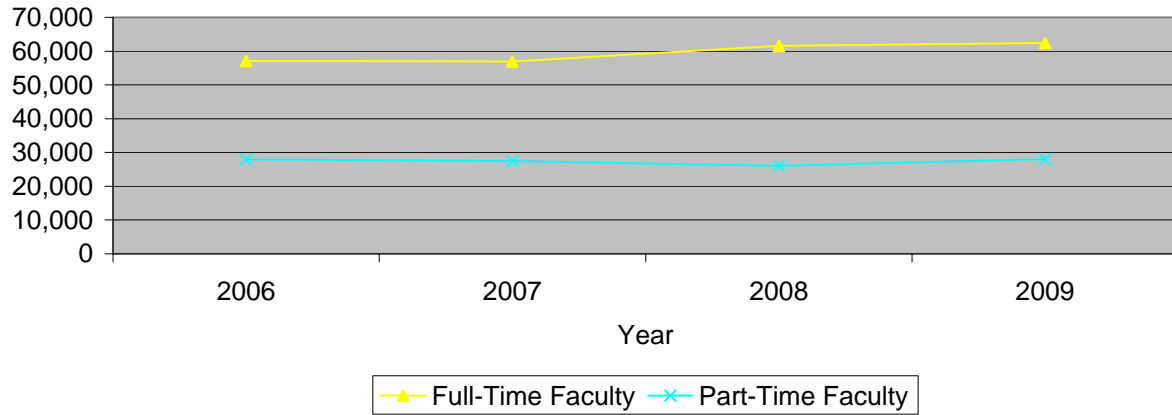
Credit Hours Taught by College and Level of Instruction								
Part-Time Faculty	Fall 2006		Fall 2007		Fall 2008		Fall 2009	
	# Sections	SCH	# Sections	SCH	# Sections	SCH	# Sections	SCH
<i>the Arts</i>								
Lower Division	59	2,863	59	2,922	54	2,814	52	2,829
Upper Division	41	443	28	268	26	384	20	174
Graduate	0	0	1	1	6	14	0	0
<i>College Total</i>	100	3,306	88	3,191	86	3,212	72	3,003
<i>% of Univ Total</i>	16.8%	11.8%	15.5%	11.6%	15.3%	12.3%	13.0%	10.7%
<i>Business &amp; Computer Science</i>								
Lower Division	17	1,683	15	1,506	16	1,415	5	314
Upper Division	3	201	3	186	2	150	4	234
Graduate	0	0	0	0	0	0	0	0
<i>College Total</i>	20	1,884	18	1,692	18	1,565	9	548
<i>% of Univ Total</i>	3.4%	6.8%	3.2%	6.2%	3.2%	6.0%	1.6%	2.0%
<i>Education &amp; Health Professions</i>								
Lower Division	58	2,145	54	2,147	59	2,223	67	2,297
Upper Division	27	1,008	44	1,544	37	976	40	1,204
Graduate	16	306	29	1,147	28	920	42	1,122
<i>College Total</i>	101	3,459	127	4,838	124	4,119	149	4,623
<i>% of Univ Total</i>	16.9%	12.4%	22.4%	17.6%	22.1%	15.8%	26.8%	16.5%
<i>Letters &amp; Sciences</i>								
Remedial	28	1,938	26	1,746	28	1,768	33	2,506
Lower Division	178	11,348	164	10,122	165	9,873	110	9,042
Upper Division	72	3,024	57	2,856	58	2,688	71	3,015
Graduate	44	1,533	41	1,671	41	1,521	40	1,572
<i>College Total</i>	322	17,843	288	16,395	292	15,850	254	16,135
<i>% of Univ Total</i>	53.9%	63.9%	50.7%	59.7%	52.0%	60.8%	45.8%	57.5%
<i>Other</i>								
Lower Division	54	1,419	47	1,325	41	1,318	69	3,691
Upper Division	0	0	0	0	0	0	2	46
<i>Total</i>	54	1,419	47	1,325	41	1,318	71	3,737
<i>% of Univ Total</i>	9.0%	5.1%	8.3%	4.8%	7.3%	5.1%	12.8%	13.3%
<i>University Total</i>								
Remedial	28	1,938	26	1,746	28	1,768	33	2,506
Lower Division	366	19,458	339	18,022	335	17,643	303	18,173
Upper Division	143	4,676	132	4,854	123	4,198	137	4,673
Graduate	60	1,839	71	2,819	75	2,455	82	2,694
<i>Total</i>	597	27,911	568	27,441	561	26,064	555	28,046

Credit Hours Taught: All Faculty



Credit Hours Taught by College and Level of Instruction								
All Faculty	Fall 2006		Fall 2007		Fall 2008		Fall 2009	
	# Sections	SCH	# Sections	SCH	# Sections	SCH	# Sections	SCH
<i>the Arts</i>								
Lower Division	162	6,498	155	6,528	160	5,851	161	5,992
Upper Division	190	2,833	176	2,589	187	3,005	188	2,837
Graduate	17	154	28	101	29	101	40	161
College Total	369	9,485	359	9,218	376	8,957	389	8,990
% of Univ Total	20.9%	11.2%	20.9%	10.9%	21.3%	10.2%	21.5%	9.9%
<i>Business &amp; Computer Science</i>								
Lower Division	58	6,249	53	5,688	50	6,020	50	5,166
Upper Division	78	6,036	80	6,663	92	7,199	93	6,545
Graduate	19	663	22	801	21	990	28	966
College Total	155	12,948	155	13,152	163	14,209	171	12,677
% of Univ Total	8.8%	15.2%	9.0%	15.6%	9.2%	16.2%	9.4%	14.0%
<i>Education &amp; Health Professions</i>								
Lower Division	112	4,603	104	4,651	97	4,684	112	5,081
Upper Division	145	6,476	142	7,166	141	7,358	136	7,403
Graduate	85	2,217	99	3,596	105	3,531	128	4,372
College Total	342	13,296	345	15,413	343	15,573	376	16,856
% of Univ Total	19.4%	15.6%	20.1%	18.3%	19.4%	17.8%	20.8%	18.6%
<i>Letters &amp; Sciences</i>								
Remedial	53	4,070	49	3,660	59	4,738	57	5,140
Lower Division	420	31,176	391	28,579	389	28,972	374	29,628
Upper Division	260	9,543	254	9,646	265	10,318	255	9,987
Graduate	81	2,277	82	2,463	91	2,629	89	2,603
College Total	814	47,066	776	44,348	804	46,657	775	47,358
% of Univ Total	46.1%	55.4%	45.3%	52.6%	45.6%	53.2%	42.8%	52.4%
<i>Other</i>								
Lower Division	77	2,083	70	2,031	65	1,991	86	4,229
Upper Division	7	121	9	219	13	277	13	331
Total	84	2,204	79	2,250	78	2,268	99	4,560
% of Univ Total	4.8%	2.6%	4.6%	2.7%	4.4%	2.6%	5.5%	5.0%
<i>University Total</i>								
Remedial	53	4,070	49	3,660	59	4,738	57	5,140
Lower Division	829	50,609	773	47,477	761	47,518	783	50,096
Upper Division	680	25,009	661	26,283	698	28,157	685	27,103
Graduate	202	5,311	231	6,961	246	7,251	285	8,102
Total	1,764	84,999	1,714	84,381	1,764	87,664	1,810	90,441

### Credit Hours Taught by Faculty Status



<b>Credit Hours Taught by College and Faculty Status</b>								
<b>All Faculty</b>	Fall 2006		Fall 2007		Fall 2008		Fall 2009	
	# Sections	SCH	# Sections	SCH	# Sections	SCH	# Sections	SCH
<i>the Arts</i>								
Full-Time Faculty	269	6,179	271	6,027	290	5,745	317	5,987
Part-Time Faculty	100	3,306	88	3,191	86	3,212	72	3,003
<i>College Total</i>	369	9,485	359	9,218	376	8,957	389	8,990
<i>% of Univ Total</i>	20.9%	11.2%	20.9%	10.9%	21.3%	10.2%	21.5%	9.9%
<i>Business &amp; Computer Science</i>								
Full-Time Faculty	135	11,064	137	11,460	145	12,644	162	12,129
Part-Time Faculty	20	1,884	18	1,692	18	1,565	9	548
<i>College Total</i>	155	12,948	155	13,152	163	14,209	171	12,677
<i>% of Univ Total</i>	8.8%	15.2%	9.0%	15.6%	9.2%	16.2%	9.4%	14.0%
<i>Education &amp; Health Professions</i>								
Full-Time Faculty	241	9,837	218	10,575	219	11,454	227	12,233
Part-Time Faculty	101	3,459	127	4,838	124	4,119	149	4,623
<i>College Total</i>	342	13,296	345	15,413	343	15,573	376	16,856
<i>% of Univ Total</i>	19.4%	15.6%	20.1%	18.3%	19.4%	17.8%	20.8%	18.6%
<i>Letters &amp; Sciences</i>								
Full-Time Faculty	492	29,223	488	27,953	512	30,807	521	31,223
Part-Time Faculty	322	17,843	288	16,395	292	15,850	254	16,135
<i>College Total</i>	814	47,066	776	44,348	804	46,657	775	47,358
<i>% of Univ Total</i>	46.1%	55.4%	45.3%	52.6%	45.6%	53.2%	42.8%	52.4%
<i>Other</i>								
Full-Time Faculty	30	785	32	925	37	950	28	823
Part-Time Faculty	54	1,419	47	1,325	41	1,318	71	3,737
<i>Total</i>	84	2,204	79	2,250	78	2,268	99	4,560
<i>% of Univ Total</i>	4.8%	2.6%	4.6%	2.7%	4.4%	2.6%	5.5%	5.0%
<i>University Total</i>								
Full-Time Faculty	1,167	57,088	1,146	56,940	1,203	61,600	1,255	62,395
Part-Time Faculty	597	27,911	568	27,441	561	26,064	555	28,046
<i>Total</i>	1,764	84,999	1,714	84,381	1,764	87,664	1,810	90,441