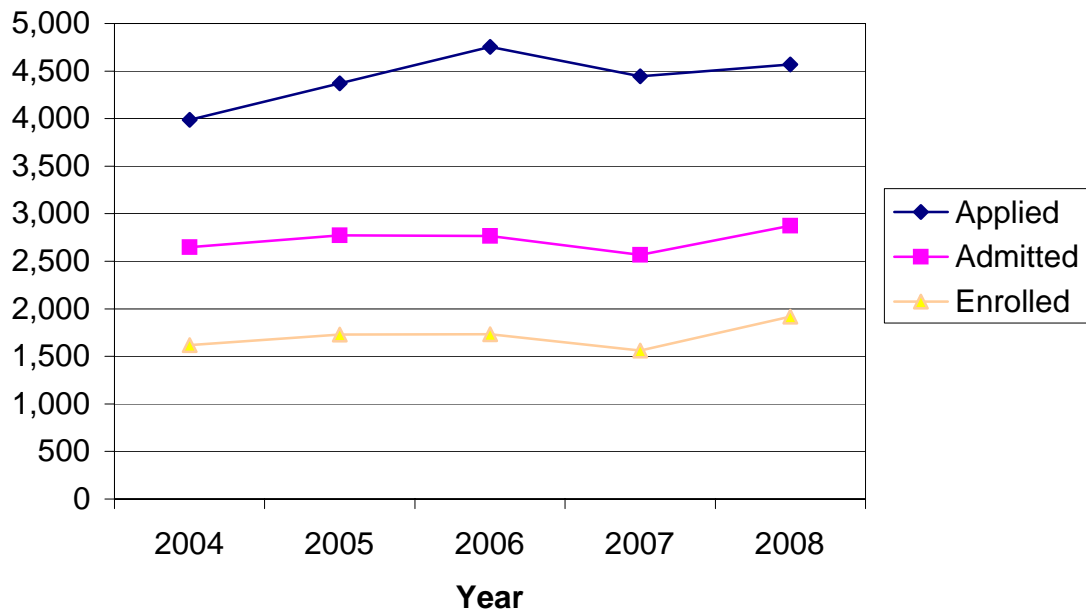


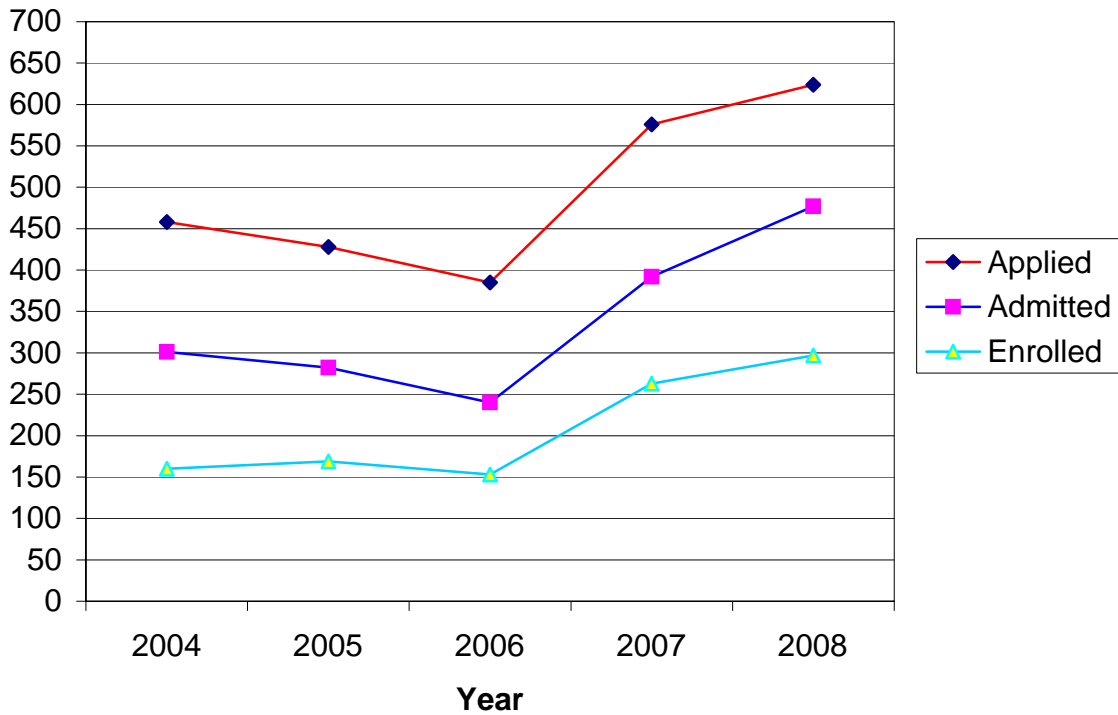
CSU Facts & Figures 2008: Applications Received

Undergraduate Applications Received



Undergraduate Applications Received							
	Fall 2004	Fall 2005	Fall 2006	Fall 2007	Fall 2008	4-Year # Change	4-Year % Change
Applied							
Entering Freshmen	2,614	3,007	3,307	3,093	3,023	409	15.6%
Transfer Students	1,292	1,291	1,372	1,282	1,377	85	6.6%
Other New Students	80	74	75	71	170	90	112.5%
<i>Total</i>	3,986	4,372	4,754	4,446	4,570	584	14.7%
Accepted							
Entering Freshmen	1,708	1,844	1,833	1,681	1,812	104	6.1%
Transfer Students	887	872	884	838	917	30	3.4%
Other New Students	52	56	50	49	145	93	178.8%
<i>Total</i>	2,647	2,772	2,767	2,568	2,874	227	8.6%
Enrolled							
Entering Freshmen	1,058	1,184	1,167	1,035	1,244	186	17.6%
Transfer Students	529	512	526	492	566	37	7.0%
Other New Students	32	34	40	35	107	75	234.4%
<i>Total</i>	1,619	1,730	1,733	1,562	1,917	298	18.4%

Graduate Applications Received



Graduate Applications Received							
	Fall 2004	Fall 2005	Fall 2006	Fall 2007	Fall 2008	4-Year # Change	4-Year % Change
Applied							
MBA	33	36	35	55	46	13	39.4%
MEd/MS - Education	185	161	145	229	279	94	50.8%
MPA	135	142	120	125	109	-26	-19.3%
MM	8	10	11	13	12	4	50.0%
MS-Environmental Science	13	9	6	5	15	2	15.4%
MS-Computer Science	48	40	39	50	64	16	33.3%
EdS	26	19	22	92	95	69	265.4%
Graduate-Other	10	11	7	7	4	-6	-60.0%
<i>Total</i>	458	428	385	576	624	81	17.7%
Accepted							
MBA	12	19	14	28	28	16	133.3%
MEd/MS - Education	129	89	73	142	202	73	56.6%
MPA	109	118	91	92	97	-12	-11.0%
MM	2	6	5	8	3	1	50.0%
MS-Environmental Science	2	5	5	4	14	12	600.0%
MS-Computer Science	27	27	31	34	52	25	92.6%
EdS	13	7	16	78	79	66	507.7%
Graduate-Other	7	11	5	6	2	-5	-71.4%
<i>Total</i>	301	282	240	392	477	86	28.6%
Enrolled							
MBA	13	17	14	21	22	9	69.2%
MEd/MS - Education	53	45	41	89	111	58	109.4%
MPA	67	77	62	64	68	1	1.5%
MM	1	6	4	5	2	1	100.0%
MS-Environmental Science	2	2	4	3	12	10	500.0%
MS-Computer Science	16	14	22	22	41	25	156.3%
EdS	5	3	4	53	40	35	700.0%
Graduate-Other	3	5	2	6	1	-2	-66.7%
<i>Total</i>	160	169	153	263	297	137	85.6%

