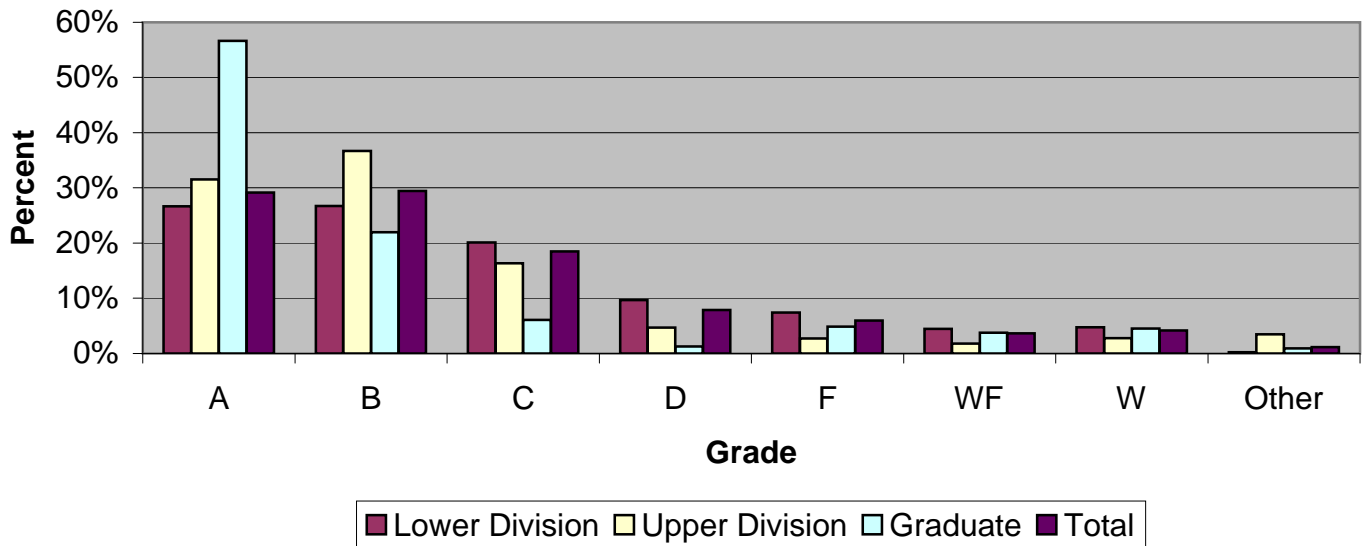


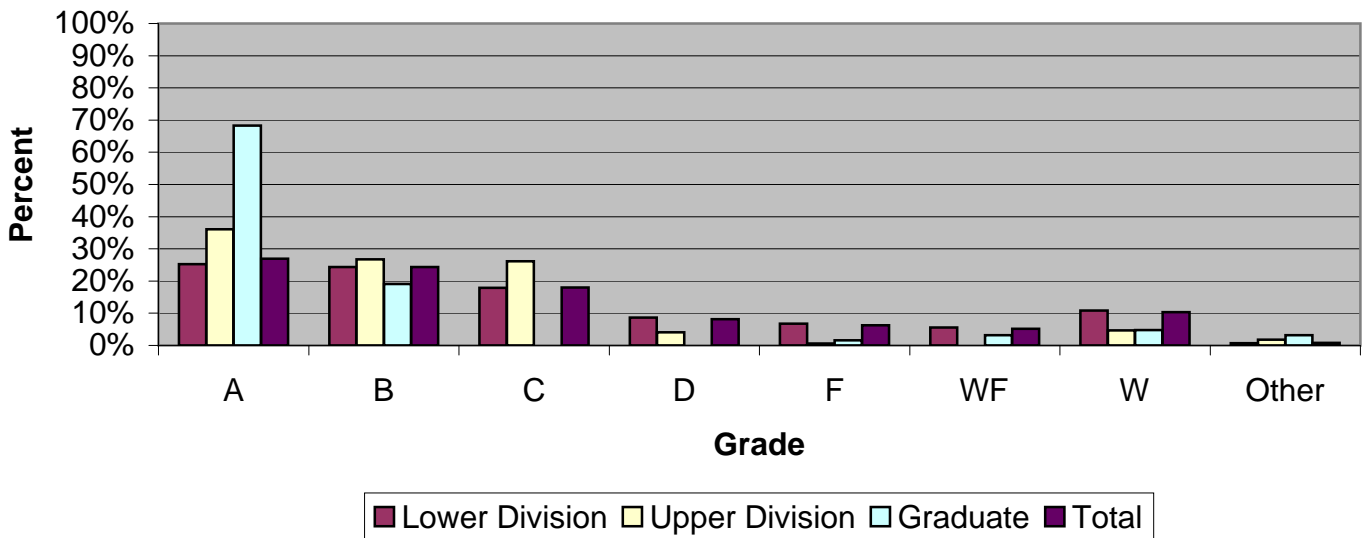
CSU Facts & Figures 2008: Grade Distribution

Grade Distribution of Full-Time Faculty for 2007-08 College of Science



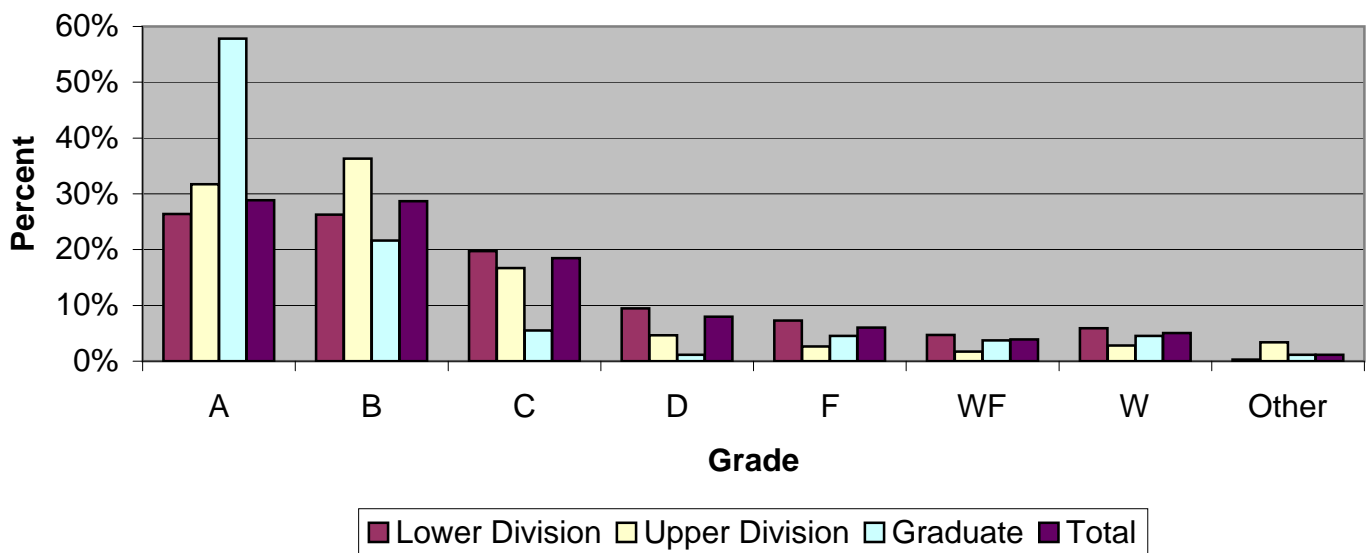
| Grade Distribution by Level of Instruction - College of Science | | | | | | | | | |
|---|--------------|--------------|--------------|--------------|------------|------------|--------------|------------|---------------|
| Full-Time Faculty | A's | B's | C's | D's | F's | WF's | W's | Other | Total |
| <i>2004-2005</i> | | | | | | | | | |
| Lower Division | 2,585 | 2,231 | 1,638 | 889 | 783 | 337 | 1,020 | 33 | 9,516 |
| Percent | 27.2% | 23.4% | 17.2% | 9.3% | 8.2% | 3.5% | 10.7% | 0.3% | 100.0% |
| Upper Division | 1,344 | 1,257 | 701 | 217 | 134 | 64 | 213 | 167 | 4,097 |
| Percent | 32.8% | 30.7% | 17.1% | 5.3% | 3.3% | 1.6% | 5.2% | 4.1% | 100.0% |
| Graduate | 268 | 99 | 26 | 3 | 4 | 3 | 35 | 18 | 456 |
| Percent | 58.8% | 21.7% | 5.7% | 0.7% | 0.9% | 0.7% | 7.7% | 3.9% | 100.0% |
| Total | 4,197 | 3,587 | 2,365 | 1,109 | 921 | 404 | 1,268 | 218 | 14,069 |
| Percent | 29.8% | 25.5% | 16.8% | 7.9% | 6.5% | 2.9% | 9.0% | 1.5% | 100.0% |
| <i>2005-2006</i> | | | | | | | | | |
| Lower Division | 2,596 | 2,088 | 1,671 | 883 | 693 | 424 | 1,236 | 26 | 9,617 |
| Percent | 27.0% | 21.7% | 17.4% | 9.2% | 7.2% | 4.4% | 12.9% | 0.3% | 100.0% |
| Upper Division | 1,266 | 1,378 | 663 | 217 | 108 | 66 | 271 | 163 | 4,132 |
| Percent | 30.6% | 33.3% | 16.0% | 5.3% | 2.6% | 1.6% | 6.6% | 3.9% | 100.0% |
| Graduate | 248 | 87 | 23 | 5 | 9 | 7 | 46 | 14 | 439 |
| Percent | 56.5% | 19.8% | 5.2% | 1.1% | 2.1% | 1.6% | 10.5% | 3.2% | 100.0% |
| Total | 4,110 | 3,553 | 2,357 | 1,105 | 810 | 497 | 1,553 | 203 | 14,188 |
| Percent | 29.0% | 25.0% | 16.6% | 7.8% | 5.7% | 3.5% | 10.9% | 1.4% | 100.0% |
| <i>2006-2007</i> | | | | | | | | | |
| Lower Division | 2,691 | 2,411 | 1,858 | 896 | 737 | 402 | 1,043 | 28 | 10,066 |
| Percent | 26.7% | 24.0% | 18.5% | 8.9% | 7.3% | 4.0% | 10.4% | 0.3% | 100.0% |
| Upper Division | 1,190 | 1,384 | 630 | 227 | 94 | 92 | 197 | 173 | 3,987 |
| Percent | 29.8% | 34.7% | 15.8% | 5.7% | 2.4% | 2.3% | 4.9% | 4.3% | 100.0% |
| Graduate | 268 | 138 | 24 | 2 | 7 | 14 | 46 | 15 | 514 |
| Percent | 52.1% | 26.8% | 4.7% | 0.4% | 1.4% | 2.7% | 8.9% | 2.9% | 100.0% |
| Total | 4,149 | 3,933 | 2,512 | 1,125 | 838 | 508 | 1,286 | 216 | 14,567 |
| Percent | 28.5% | 27.0% | 17.2% | 7.7% | 5.8% | 3.5% | 8.8% | 1.5% | 100.0% |
| <i>2007-2008</i> | | | | | | | | | |
| Lower Division | 2,745 | 2,753 | 2,074 | 996 | 765 | 460 | 489 | 22 | 10,304 |
| Percent | 26.6% | 26.7% | 20.1% | 9.7% | 7.4% | 4.5% | 4.7% | 0.2% | 100.0% |
| Upper Division | 1,413 | 1,642 | 732 | 210 | 122 | 80 | 124 | 155 | 4,478 |
| Percent | 31.6% | 36.7% | 16.3% | 4.7% | 2.7% | 1.8% | 2.8% | 3.5% | 100.0% |
| Graduate | 315 | 122 | 34 | 7 | 27 | 21 | 25 | 5 | 556 |
| Percent | 56.7% | 21.9% | 6.1% | 1.3% | 4.9% | 3.8% | 4.5% | 0.9% | 100.0% |
| Total | 4,473 | 4,517 | 2,840 | 1,213 | 914 | 561 | 638 | 182 | 15,338 |
| Percent | 29.2% | 29.4% | 18.5% | 7.9% | 6.0% | 3.7% | 4.2% | 1.2% | 100.0% |

Grade Distribution of Part-Time Faculty for 2007-08
College of Science



| Grade Distribution by Level of Instruction - College of Science | | | | | | | | | |
|---|-------|--------|-------|------|------|------|-------|-------|--------|
| Part-Time Faculty | A's | B's | C's | D's | F's | WF's | W's | Other | Total |
| <i>2004-2005</i> | | | | | | | | | |
| Lower Division | 903 | 1,071 | 716 | 313 | 274 | 176 | 529 | 27 | 4,009 |
| Percent | 22.5% | 26.7% | 17.9% | 7.8% | 6.8% | 4.4% | 13.2% | 0.7% | 100.0% |
| Upper Division | 69 | 83 | 70 | 21 | 14 | 0 | 16 | 0 | 273 |
| Percent | 25.3% | 30.4% | 25.6% | 7.7% | 5.1% | 0.0% | 5.9% | 0.0% | 100.0% |
| Graduate | 7 | 2 | 0 | 0 | 0 | 0 | 0 | 0 | 9 |
| Percent | 77.8% | 22.2% | 0.0% | 0.0% | 0.0% | 0.0% | 0.0% | 0.0% | 100.0% |
| Total | 979 | 1,156 | 786 | 334 | 288 | 176 | 545 | 27 | 4,291 |
| Percent | 22.8% | 26.9% | 18.3% | 7.8% | 6.7% | 4.1% | 12.7% | 0.6% | 100.0% |
| <i>2005-2006</i> | | | | | | | | | |
| Lower Division | 783 | 704 | 562 | 295 | 321 | 135 | 613 | 7 | 3,420 |
| Percent | 22.9% | 20.6% | 16.4% | 8.6% | 9.4% | 3.9% | 17.9% | 0.2% | 100.0% |
| Upper Division | 88 | 109 | 89 | 16 | 8 | 6 | 23 | 0 | 339 |
| Percent | 26.0% | 32.2% | 26.3% | 4.7% | 2.4% | 1.8% | 6.8% | 0.0% | 100.0% |
| Graduate | 0 | 2 | 0 | 0 | 0 | 0 | 0 | 0 | 2 |
| Percent | 0.0% | 100.0% | 0.0% | 0.0% | 0.0% | 0.0% | 0.0% | 0.0% | 100.0% |
| Total | 871 | 815 | 651 | 311 | 329 | 141 | 636 | 7 | 3,761 |
| Percent | 23.2% | 21.7% | 17.3% | 8.3% | 8.7% | 3.7% | 16.9% | 0.2% | 100.0% |
| <i>2006-2007</i> | | | | | | | | | |
| Lower Division | 657 | 492 | 318 | 120 | 218 | 104 | 426 | 10 | 2,345 |
| Percent | 28.0% | 21.0% | 13.6% | 5.1% | 9.3% | 4.4% | 18.2% | 0.4% | 100.0% |
| Upper Division | 113 | 86 | 72 | 9 | 4 | 3 | 20 | 7 | 314 |
| Percent | 36.0% | 27.4% | 22.9% | 2.9% | 1.3% | 1.0% | 6.4% | 2.2% | 100.0% |
| Graduate | 3 | 3 | 0 | 0 | 0 | 0 | 1 | 3 | 10 |
| Percent | 30.0% | 30.0% | 0.0% | 0.0% | 0.0% | 0.0% | 10.0% | 30.0% | 100.0% |
| Total | 773 | 581 | 390 | 129 | 222 | 107 | 447 | 20 | 2,669 |
| Percent | 29.0% | 21.8% | 14.6% | 4.8% | 8.3% | 4.0% | 16.7% | 0.7% | 100.0% |
| <i>2007-2008</i> | | | | | | | | | |
| Lower Division | 614 | 592 | 436 | 211 | 164 | 136 | 264 | 17 | 2,434 |
| Percent | 25.2% | 24.3% | 17.9% | 8.7% | 6.7% | 5.6% | 10.8% | 0.7% | 100.0% |
| Upper Division | 62 | 46 | 45 | 7 | 1 | 0 | 8 | 3 | 172 |
| Percent | 36.0% | 26.7% | 26.2% | 4.1% | 0.6% | 0.0% | 4.7% | 1.7% | 100.0% |
| Graduate | 43 | 12 | 0 | 0 | 1 | 2 | 3 | 2 | 63 |
| Percent | 68.3% | 19.0% | 0.0% | 0.0% | 1.6% | 3.2% | 4.8% | 3.2% | 100.0% |
| Total | 719 | 650 | 481 | 218 | 166 | 138 | 275 | 22 | 2,669 |
| Percent | 26.9% | 24.4% | 18.0% | 8.2% | 6.2% | 5.2% | 10.3% | 0.8% | 100.0% |

Grade Distribution of All Faculty for 2007-08
College of Science



| Grade Distribution by Level of Instruction - College of Science | | | | | | | | | |
|---|-------|-------|-------|-------|-------|------|-------|-------|--------|
| All Faculty | A's | B's | C's | D's | F's | WF's | W's | Other | Total |
| <i>2004-2005</i> | | | | | | | | | |
| Lower Division | 3,488 | 3,302 | 2,354 | 1,202 | 1,057 | 513 | 1,549 | 60 | 13,525 |
| Percent | 25.8% | 24.4% | 17.4% | 8.9% | 7.8% | 3.8% | 11.5% | 0.4% | 100.0% |
| Upper Division | 1,413 | 1,340 | 771 | 238 | 148 | 64 | 229 | 167 | 4,370 |
| Percent | 32.3% | 30.7% | 17.6% | 5.4% | 3.4% | 1.5% | 5.2% | 3.8% | 100.0% |
| Graduate | 275 | 101 | 26 | 3 | 4 | 3 | 35 | 18 | 465 |
| Percent | 59.1% | 21.7% | 5.6% | 0.6% | 0.9% | 0.6% | 7.5% | 3.9% | 100.0% |
| Total | 5,176 | 4,743 | 3,151 | 1,443 | 1,209 | 580 | 1,813 | 245 | 18,360 |
| Percent | 28.2% | 25.8% | 17.2% | 7.9% | 6.6% | 3.2% | 9.9% | 1.3% | 100.0% |
| <i>2005-2006</i> | | | | | | | | | |
| Lower Division | 3,379 | 2,792 | 2,233 | 1,178 | 1,014 | 559 | 1,849 | 33 | 13,037 |
| Percent | 25.9% | 21.4% | 17.1% | 9.0% | 7.8% | 4.3% | 14.2% | 0.3% | 100.0% |
| Upper Division | 1,354 | 1,487 | 752 | 233 | 116 | 72 | 294 | 163 | 4,471 |
| Percent | 30.3% | 33.3% | 16.8% | 5.2% | 2.6% | 1.6% | 6.6% | 3.6% | 100.0% |
| Graduate | 248 | 89 | 23 | 5 | 9 | 7 | 46 | 14 | 441 |
| Percent | 56.2% | 20.2% | 5.2% | 1.1% | 2.0% | 1.6% | 10.4% | 3.2% | 100.0% |
| Total | 4,981 | 4,368 | 3,008 | 1,416 | 1,139 | 638 | 2,189 | 210 | 17,949 |
| Percent | 27.8% | 24.3% | 16.8% | 7.9% | 6.3% | 3.6% | 12.2% | 1.2% | 100.0% |
| <i>2006-2007</i> | | | | | | | | | |
| Lower Division | 3,348 | 2,903 | 2,176 | 1,016 | 955 | 506 | 1,469 | 38 | 12,411 |
| Percent | 27.0% | 23.4% | 17.5% | 8.2% | 7.7% | 4.1% | 11.8% | 0.3% | 100.0% |
| Upper Division | 1,303 | 1,470 | 702 | 236 | 98 | 95 | 217 | 180 | 4,301 |
| Percent | 30.3% | 34.2% | 16.3% | 5.5% | 2.3% | 2.2% | 5.0% | 4.2% | 100.0% |
| Graduate | 271 | 141 | 24 | 2 | 7 | 14 | 47 | 18 | 524 |
| Percent | 51.7% | 26.9% | 4.6% | 0.4% | 1.3% | 2.7% | 9.0% | 3.4% | 100.0% |
| Total | 4,922 | 4,514 | 2,902 | 1,254 | 1,060 | 615 | 1,733 | 236 | 17,236 |
| Percent | 28.6% | 26.2% | 16.8% | 7.3% | 6.1% | 3.6% | 10.1% | 1.4% | 100.0% |
| <i>2007-2008</i> | | | | | | | | | |
| Lower Division | 3,359 | 3,345 | 2,510 | 1,207 | 929 | 596 | 753 | 39 | 12,738 |
| Percent | 26.4% | 26.3% | 19.7% | 9.5% | 7.3% | 4.7% | 5.9% | 0.3% | 100.0% |
| Upper Division | 1,475 | 1,688 | 777 | 217 | 123 | 80 | 132 | 158 | 4,650 |
| Percent | 31.7% | 36.3% | 16.7% | 4.7% | 2.6% | 1.7% | 2.8% | 3.4% | 100.0% |
| Graduate | 358 | 134 | 34 | 7 | 28 | 23 | 28 | 7 | 619 |
| Percent | 57.8% | 21.6% | 5.5% | 1.1% | 4.5% | 3.7% | 4.5% | 1.1% | 100.0% |
| Total | 5,192 | 5,167 | 3,321 | 1,431 | 1,080 | 699 | 913 | 204 | 18,007 |
| Percent | 28.8% | 28.7% | 18.4% | 7.9% | 6.0% | 3.9% | 5.1% | 1.1% | 100.0% |