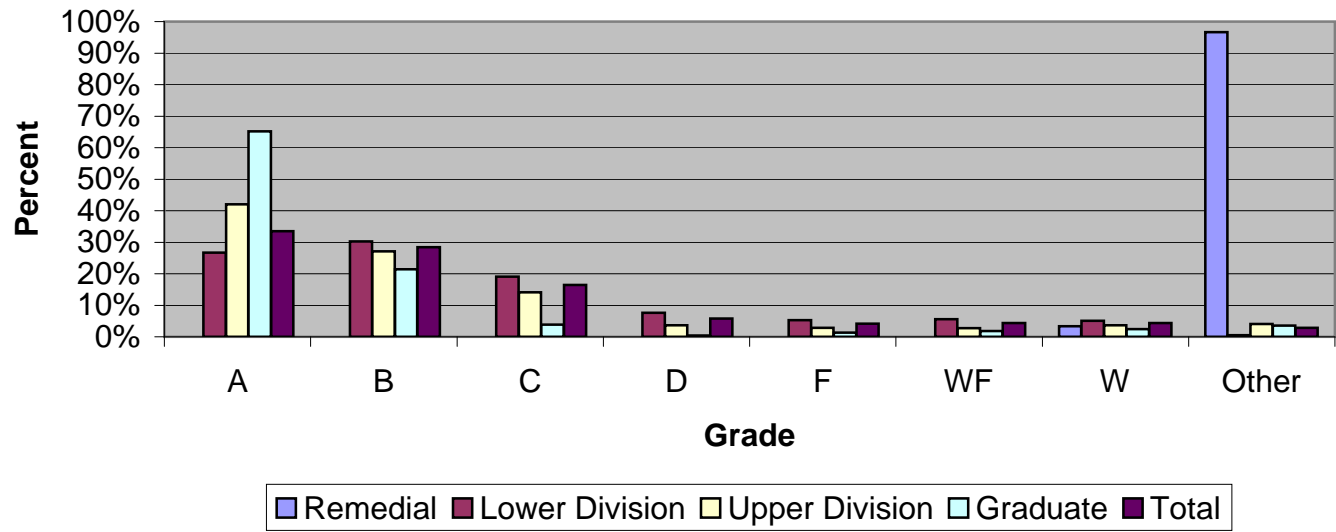


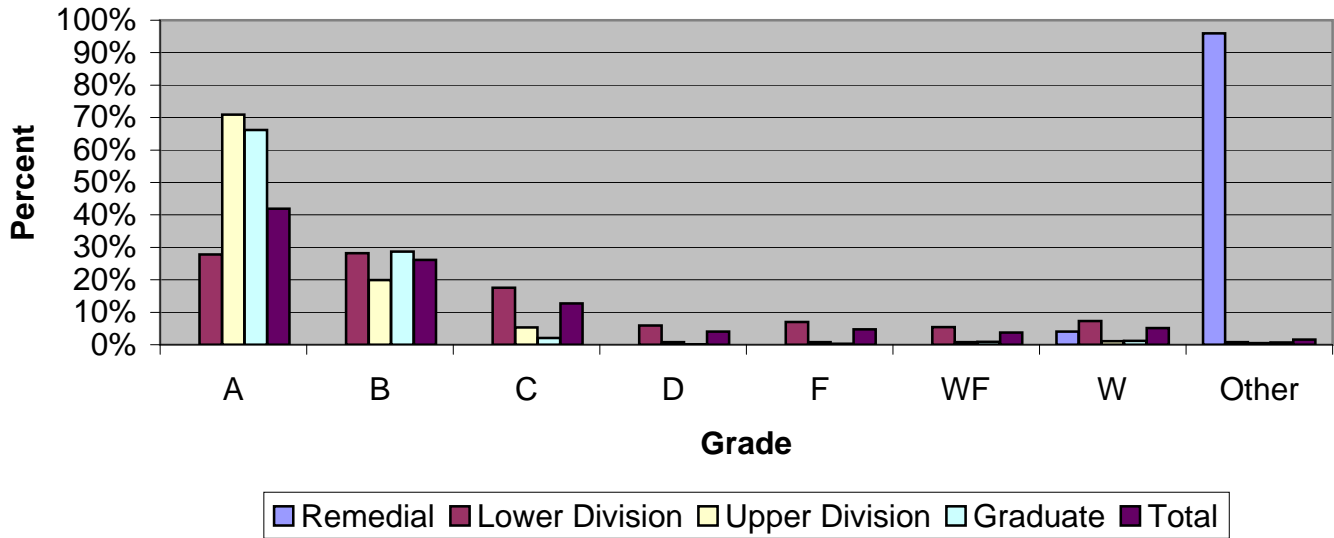
# CSU Facts & Figures 2008: Grade Distribution

## Grade Distribution of Full-Time Faculty for 2007-08 College of Arts & Letters



Grade Distribution by Level of Instruction - College of Arts & Letters									
Full-Time Faculty	A's	B's	C's	D's	F's	WF's	W's	Other	Total
<i>2004-2005</i>									
Remedial	0	0	0	0	0	0	1	13	14
Percent	0.0%	0.0%	0.0%	0.0%	0.0%	0.0%	7.1%	92.9%	100.0%
Lower Division	2,529	2,392	1,440	537	396	266	788	75	8,423
Percent	30.0%	28.4%	17.1%	6.4%	4.7%	3.2%	9.4%	0.9%	100.0%
Upper Division	2,374	1,244	537	107	104	84	303	131	4,884
Percent	48.6%	25.5%	11.0%	2.2%	2.1%	1.7%	6.2%	2.7%	100.0%
Graduate	1,292	224	15	4	5	5	34	15	1,594
Percent	81.1%	14.1%	0.9%	0.3%	0.3%	0.3%	2.1%	0.9%	100.0%
<b>Total</b>	<b>6,195</b>	<b>3,860</b>	<b>1,992</b>	<b>648</b>	<b>505</b>	<b>355</b>	<b>1,126</b>	<b>234</b>	<b>14,915</b>
Percent	41.5%	25.9%	13.4%	4.3%	3.4%	2.4%	7.5%	1.6%	100.0%
<i>2005-2006</i>									
Remedial	0	0	0	0	0	0	2	51	53
Percent	0.0%	0.0%	0.0%	0.0%	0.0%	0.0%	3.8%	96.2%	100.0%
Lower Division	2,412	2,242	1,468	630	391	273	898	83	8,397
Percent	28.7%	26.7%	17.5%	7.5%	4.7%	3.3%	10.7%	1.0%	100.0%
Upper Division	2,137	1,424	615	125	146	107	377	164	5,095
Percent	41.9%	27.9%	12.1%	2.5%	2.9%	2.1%	7.4%	3.2%	100.0%
Graduate	555	176	17	2	5	6	43	24	828
Percent	67.0%	21.3%	2.1%	0.2%	0.6%	0.7%	5.2%	2.9%	100.0%
<b>Total</b>	<b>5,104</b>	<b>3,842</b>	<b>2,100</b>	<b>757</b>	<b>542</b>	<b>386</b>	<b>1,320</b>	<b>322</b>	<b>14,373</b>
Percent	35.5%	26.7%	14.6%	5.3%	3.8%	2.7%	9.2%	2.2%	100.0%
<i>2006-2007</i>									
Remedial	0	0	0	0	0	0	1	53	54
Percent	0.0%	0.0%	0.0%	0.0%	0.0%	0.0%	1.9%	98.1%	100.0%
Lower Division	2,400	2,430	1,545	545	399	362	872	88	8,641
Percent	27.8%	28.1%	17.9%	6.3%	4.6%	4.2%	10.1%	1.0%	100.0%
Upper Division	2,072	1,434	693	148	145	117	370	183	5,162
Percent	40.1%	27.8%	13.4%	2.9%	2.8%	2.3%	7.2%	3.5%	100.0%
Graduate	387	140	23	2	4	4	36	23	619
Percent	62.5%	22.6%	3.7%	0.3%	0.6%	0.6%	5.8%	3.7%	100.0%
<b>Total</b>	<b>4,859</b>	<b>4,004</b>	<b>2,261</b>	<b>695</b>	<b>548</b>	<b>483</b>	<b>1,279</b>	<b>347</b>	<b>14,476</b>
Percent	33.6%	27.7%	15.6%	4.8%	3.8%	3.3%	8.8%	2.4%	100.0%
<i>2007-2008</i>									
Remedial	0	0	0	0	0	0	5	145	150
Percent	0.0%	0.0%	0.0%	0.0%	0.0%	0.0%	3.3%	96.7%	100.0%
Lower Division	2,252	2,554	1,611	647	445	472	426	43	8,450
Percent	26.7%	30.2%	19.1%	7.7%	5.3%	5.6%	5.0%	0.5%	100.0%
Upper Division	2,044	1,318	686	177	137	135	176	196	4,869
Percent	42.0%	27.1%	14.1%	3.6%	2.8%	2.8%	3.6%	4.0%	100.0%
Graduate	459	151	27	3	9	13	17	25	704
Percent	65.2%	21.4%	3.8%	0.4%	1.3%	1.8%	2.4%	3.6%	100.0%
<b>Total</b>	<b>4,755</b>	<b>4,023</b>	<b>2,324</b>	<b>827</b>	<b>591</b>	<b>620</b>	<b>624</b>	<b>409</b>	<b>14,173</b>
Percent	33.5%	28.4%	16.4%	5.8%	4.2%	4.4%	4.4%	2.9%	100.0%

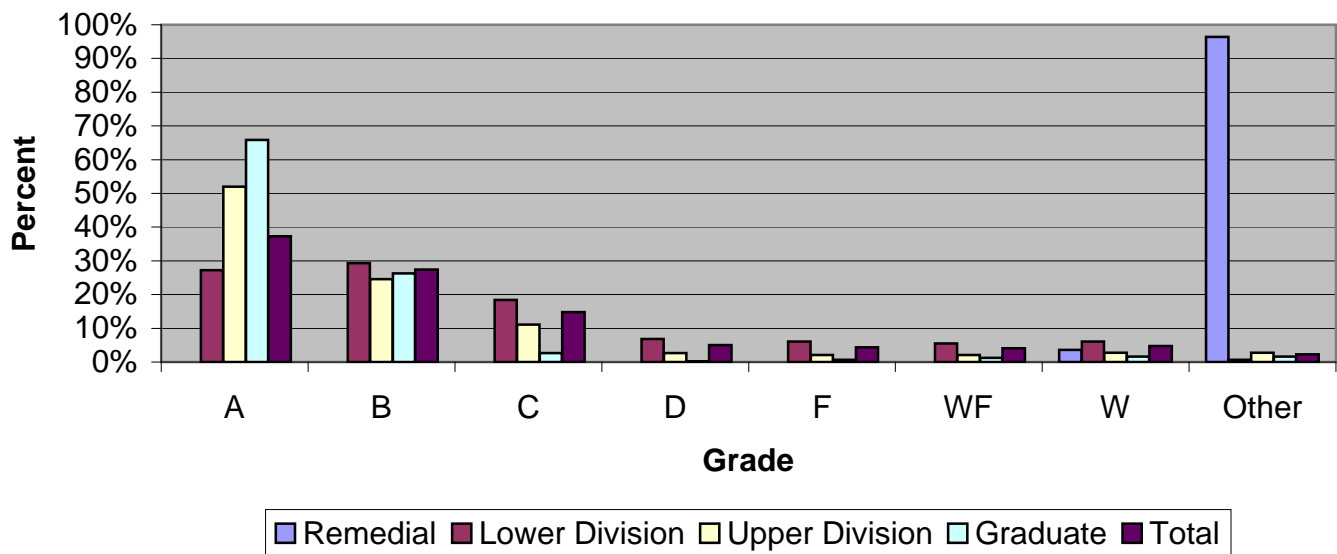
Grade Distribution of Part-Time Faculty for 2007-08  
College of Arts & Letters



Grade Distribution by Level of Instruction - College of Arts & Letters									
Part-Time Faculty	A's	B's	C's	D's	F's	WF's	W's	Other	Total
<i>2004-2005</i>									
Remedial	0	0	0	0	0	0	10	250	260
Percent	0.0%	0.0%	0.0%	0.0%	0.0%	0.0%	3.8%	96.2%	100.0%
Lower Division	2,322	2,108	1,130	350	388	257	689	36	7,280
Percent	31.9%	29.0%	15.5%	4.8%	5.3%	3.5%	9.5%	0.5%	100.0%
Upper Division	976	381	143	50	17	13	69	7	1,656
Percent	58.9%	23.0%	8.6%	3.0%	1.0%	0.8%	4.2%	0.4%	100.0%
Graduate	213	108	3	0	2	2	8	6	342
Percent	62.3%	31.6%	0.9%	0.0%	0.6%	0.6%	2.3%	1.8%	100.0%
<b>Total</b>	<b>3,511</b>	<b>2,597</b>	<b>1,276</b>	<b>400</b>	<b>407</b>	<b>272</b>	<b>776</b>	<b>299</b>	<b>9,538</b>
Percent	36.8%	27.2%	13.4%	4.2%	4.3%	2.9%	8.1%	3.1%	100.0%
<i>2005-2006</i>									
Remedial	0	0	0	0	0	0	12	283	295
Percent	0.0%	0.0%	0.0%	0.0%	0.0%	0.0%	4.1%	95.9%	100.0%
Lower Division	2,245	2,360	1,330	405	389	370	1,021	44	8,164
Percent	27.5%	28.9%	16.3%	5.0%	4.8%	4.5%	12.5%	0.5%	100.0%
Upper Division	1,450	447	142	18	16	11	38	24	2,146
Percent	67.6%	20.8%	6.6%	0.8%	0.7%	0.5%	1.8%	1.1%	100.0%
Graduate	866	256	12	1	4	7	17	10	1,173
Percent	73.8%	21.8%	1.0%	0.1%	0.3%	0.6%	1.4%	0.9%	100.0%
<b>Total</b>	<b>4,561</b>	<b>3,063</b>	<b>1,484</b>	<b>424</b>	<b>409</b>	<b>388</b>	<b>1,088</b>	<b>361</b>	<b>11,778</b>
Percent	38.7%	26.0%	12.6%	3.6%	3.5%	3.3%	9.2%	3.1%	100.0%
<i>2006-2007</i>									
Remedial	0	0	0	0	0	0	11	273	284
Percent	0.0%	0.0%	0.0%	0.0%	0.0%	0.0%	3.9%	96.1%	100.0%
Lower Division	2,243	2,350	1,416	491	522	405	1,090	55	8,572
Percent	26.2%	27.4%	16.5%	5.7%	6.1%	4.7%	12.7%	0.6%	100.0%
Upper Division	1,790	621	143	18	13	16	50	4	2,655
Percent	67.4%	23.4%	5.4%	0.7%	0.5%	0.6%	1.9%	0.2%	100.0%
Graduate	1,053	310	15	0	0	12	36	16	1,442
Percent	73.0%	21.5%	1.0%	0.0%	0.0%	0.8%	2.5%	1.1%	100.0%
<b>Total</b>	<b>5,086</b>	<b>3,281</b>	<b>1,574</b>	<b>509</b>	<b>535</b>	<b>433</b>	<b>1,187</b>	<b>348</b>	<b>12,953</b>
Percent	39.3%	25.3%	12.2%	3.9%	4.1%	3.3%	9.2%	2.7%	100.0%
<i>2007-2008</i>									
Remedial	0	0	0	0	0	0	4	96	100
Percent	0.0%	0.0%	0.0%	0.0%	0.0%	0.0%	4.0%	96.0%	100.0%
Lower Division	2,031	2,058	1,282	435	508	393	533	61	7,301
Percent	27.8%	28.2%	17.6%	6.0%	7.0%	5.4%	7.3%	0.8%	100.0%
Upper Division	1,820	512	136	19	19	19	28	12	2,565
Percent	71.0%	20.0%	5.3%	0.7%	0.7%	0.7%	1.1%	0.5%	100.0%
Graduate	900	391	28	1	4	12	16	9	1,361
Percent	66.1%	28.7%	2.1%	0.1%	0.3%	0.9%	1.2%	0.7%	100.0%
<b>Total</b>	<b>4,751</b>	<b>2,961</b>	<b>1,446</b>	<b>455</b>	<b>531</b>	<b>424</b>	<b>581</b>	<b>178</b>	<b>11,327</b>
Percent	41.9%	26.1%	12.8%	4.0%	4.7%	3.7%	5.1%	1.6%	100.0%

Grade Distribution of All Faculty for 2007-08  
College of Arts & Letters

College of Arts & Letters



Grade Distribution by Level of Instruction - College of Arts & Letters									
All Faculty	A's	B's	C's	D's	F's	WF's	W's	Other	Total
<i>2004-2005</i>									
Remedial	0	0	0	0	0	0	11	263	274
Percent							4.0%	96.0%	100.0%
Lower Division	4,851	4,500	2,570	887	784	523	1,477	111	15,703
Percent	30.9%	28.7%	16.4%	5.6%	5.0%	3.3%	9.4%	0.7%	100.0%
Upper Division	3,350	1,625	680	157	121	97	372	138	6,540
Percent	51.2%	24.8%	10.4%	2.4%	1.9%	1.5%	5.7%	2.1%	100.0%
Graduate	1,505	332	18	4	7	7	42	21	1,936
Percent	77.7%	17.1%	0.9%	0.2%	0.4%	0.4%	2.2%	1.1%	100.0%
Total	9,706	6,457	3,268	1,048	912	627	1,902	533	24,453
Percent	39.7%	26.4%	13.4%	4.3%	3.7%	2.6%	7.8%	2.2%	100.0%
<i>2005-2006</i>									
Remedial	0	0	0	0	0	0	14	334	348
Percent	0.0%	0.0%	0.0%	0.0%	0.0%	0.0%	4.0%	96.0%	100.0%
Lower Division	4,657	4,602	2,798	1,035	780	643	1,919	127	16,561
Percent	28.1%	27.8%	16.9%	6.2%	4.7%	3.9%	11.6%	0.8%	100.0%
Upper Division	3,587	1,871	757	143	162	118	415	188	7,241
Percent	49.5%	25.8%	10.5%	2.0%	2.2%	1.6%	5.7%	2.6%	100.0%
Graduate	1,421	432	29	3	9	13	60	34	2,001
Percent	71.0%	21.6%	1.4%	0.1%	0.4%	0.6%	3.0%	1.7%	100.0%
Total	9,665	6,905	3,584	1,181	951	774	2,408	683	26,151
Percent	37.0%	26.4%	13.7%	4.5%	3.6%	3.0%	9.2%	2.6%	100.0%
<i>2006-2007</i>									
Remedial	0	0	0	0	0	0	12	326	338
Percent	0.0%	0.0%	0.0%	0.0%	0.0%	0.0%	3.6%	96.4%	100.0%
Lower Division	4,643	4,780	2,961	1,036	921	767	1,962	143	17,213
Percent	27.0%	27.8%	17.2%	6.0%	5.4%	4.5%	11.4%	0.8%	100.0%
Upper Division	3,862	2,055	836	166	158	133	420	187	7,817
Percent	49.4%	26.3%	10.7%	2.1%	2.0%	1.7%	5.4%	2.4%	100.0%
Graduate	1,440	450	38	2	4	16	72	39	2,061
Percent	69.9%	21.8%	1.8%	0.1%	0.2%	0.8%	3.5%	1.9%	100.0%
Total	9,945	7,285	3,835	1,204	1,083	916	2,466	695	27,429
Percent	36.3%	26.6%	14.0%	4.4%	3.9%	3.3%	9.0%	2.5%	100.0%
<i>2007-2008</i>									
Remedial	0	0	0	0	0	0	9	241	250
Percent	0.0%	0.0%	0.0%	0.0%	0.0%	0.0%	3.6%	96.4%	100.0%
Lower Division	4,283	4,612	2,893	1,082	953	865	959	104	15,751
Percent	27.2%	29.3%	18.4%	6.9%	6.1%	5.5%	6.1%	0.7%	100.0%
Upper Division	3,864	1,830	822	196	156	154	204	208	7,434
Percent	52.0%	24.6%	11.1%	2.6%	2.1%	2.1%	2.7%	2.8%	100.0%
Graduate	1,359	542	55	4	13	25	33	34	2,065
Percent	65.8%	26.2%	2.7%	0.2%	0.6%	1.2%	1.6%	1.6%	100.0%
Total	9,506	6,984	3,770	1,282	1,122	1,044	1,205	587	25,500
Percent	37.3%	27.4%	14.8%	5.0%	4.4%	4.1%	4.7%	2.3%	100.0%