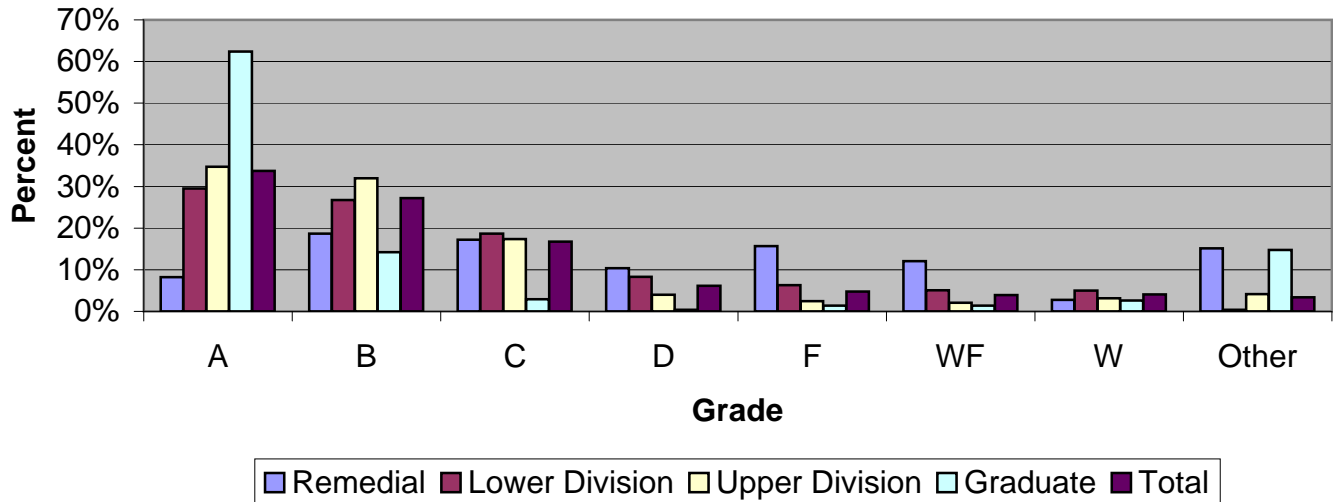


CSU Facts & Figures 2008: Grade Distribution

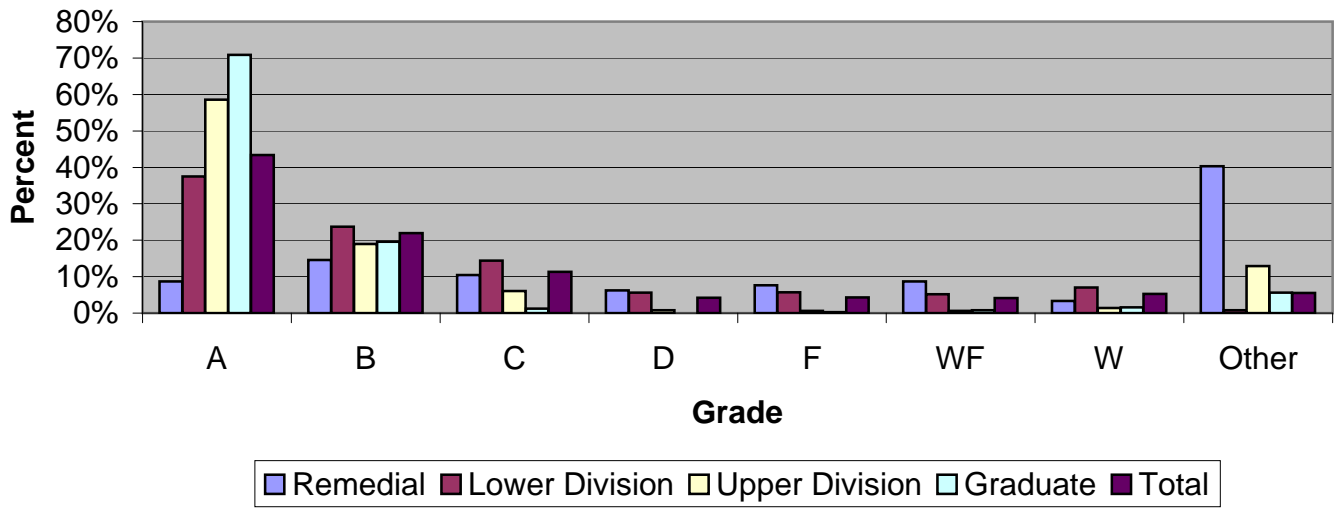
Grade Distribution of Full-Time Faculty for 2007-08



Grade Distribution by Level of Instruction

Full-Time Faculty	A's	B's	C's	D's	F's	WF's	W's	Other	Total
<i>2004-2005</i>									
Remedial	43	154	101	73	35	63	22	37	528
Percent	8.1%	29.2%	19.1%	13.8%	6.6%	11.9%	4.2%	7.0%	100.0%
Lower Division	7,146	5,718	3,816	1,749	1,448	732	2,210	138	22,957
Percent	31.1%	24.9%	16.6%	7.6%	6.3%	3.2%	9.6%	0.6%	100.0%
Upper Division	5,313	4,204	2,123	566	315	216	780	496	14,013
Percent	37.9%	30.0%	15.2%	4.0%	2.2%	1.5%	5.6%	3.5%	100.0%
Graduate	2,963	635	79	11	10	14	136	299	4,147
Percent	71.4%	15.3%	1.9%	0.3%	0.2%	0.3%	3.3%	7.2%	100.0%
Total	15,465	10,711	6,119	2,399	1,808	1,025	3,148	970	41,645
Percent	37.1%	25.7%	14.7%	5.8%	4.3%	2.5%	7.6%	2.3%	100.0%
<i>2005-2006</i>									
Remedial	42	197	145	100	68	121	55	102	830
Percent	5.1%	23.7%	17.5%	12.0%	8.2%	14.6%	6.6%	12.3%	100.0%
Lower Division	7,190	5,334	3,794	1,805	1,374	840	2,655	165	23,157
Percent	31.0%	23.0%	16.4%	7.8%	5.9%	3.6%	11.5%	0.7%	100.0%
Upper Division	5,214	4,561	2,296	558	379	248	963	520	14,739
Percent	35.4%	30.9%	15.6%	3.8%	2.6%	1.7%	6.5%	3.5%	100.0%
Graduate	2,409	565	70	7	19	23	161	416	3,670
Percent	65.6%	15.4%	1.9%	0.2%	0.5%	0.6%	4.4%	11.3%	100.0%
Total	14,855	10,657	6,305	2,470	1,840	1,232	3,834	1,203	42,396
Percent	35.0%	25.1%	14.9%	5.8%	4.3%	2.9%	9.0%	2.8%	100.0%
<i>2006-2007</i>									
Remedial	76	228	307	128	149	140	71	116	1,215
Percent	6.3%	18.8%	25.3%	10.5%	12.3%	11.5%	5.8%	9.5%	100.0%
Lower Division	7,654	6,103	4,323	1,820	1,483	989	2,462	154	24,988
Percent	30.6%	24.4%	17.3%	7.3%	5.9%	4.0%	9.9%	0.6%	100.0%
Upper Division	5,356	4,839	2,423	603	326	295	893	608	15,343
Percent	34.9%	31.5%	15.8%	3.9%	2.1%	1.9%	5.8%	4.0%	100.0%
Graduate	2,074	536	84	5	17	27	158	432	3,333
Percent	62.2%	16.1%	2.5%	0.2%	0.5%	0.8%	4.7%	13.0%	100.0%
Total	15,160	11,706	7,137	2,556	1,975	1,451	3,584	1,310	44,879
Percent	33.8%	26.1%	15.9%	5.7%	4.4%	3.2%	8.0%	2.9%	100.0%
<i>2007-2008</i>									
Remedial	102	233	214	129	195	150	34	189	1,246
Percent	8.2%	18.7%	17.2%	10.4%	15.7%	12.0%	2.7%	15.2%	100.0%
Lower Division	7,196	6,520	4,559	2,020	1,531	1,241	1,223	97	24,387
Percent	29.5%	26.7%	18.7%	8.3%	6.3%	5.1%	5.0%	0.4%	100.0%
Upper Division	5,621	5,165	2,808	650	403	335	514	674	16,170
Percent	34.8%	31.9%	17.4%	4.0%	2.5%	2.1%	3.2%	4.2%	100.0%
Graduate	2,548	580	120	16	55	55	108	604	4,086
Percent	62.4%	14.2%	2.9%	0.4%	1.3%	1.3%	2.6%	14.8%	100.0%
Total	15,467	12,498	7,701	2,815	2,184	1,781	1,879	1,564	45,889
Percent	33.7%	27.2%	16.8%	6.1%	4.8%	3.9%	4.1%	3.4%	100.0%

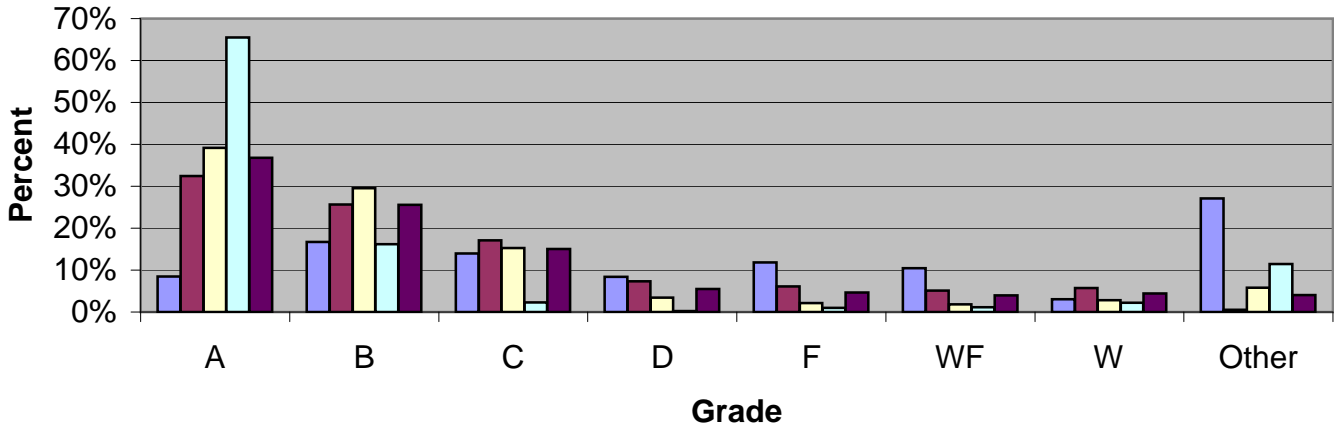
Grade Distribution of Part-Time Faculty for 2007-08



Grade Distribution by Level of Instruction

Part-Time Faculty	A's	B's	C's	D's	F's	WF's	W's	Other	Total
<i>2004-2005</i>									
Remedial	80	100	112	69	88	92	63	479	1,083
Percent	7.4%	9.2%	10.3%	6.4%	8.1%	8.5%	5.8%	44.2%	100.0%
Lower Division	6,843	4,275	2,384	817	826	632	1,676	101	17,554
Percent	39.0%	24.4%	13.6%	4.7%	4.7%	3.6%	9.5%	0.6%	100.0%
Upper Division	1,485	646	294	81	38	21	117	248	2,930
Percent	50.7%	22.0%	10.0%	2.8%	1.3%	0.7%	4.0%	8.5%	100.0%
Graduate	799	200	11	0	5	7	38	72	1,132
Percent	70.6%	17.7%	1.0%	0.0%	0.4%	0.6%	3.4%	6.4%	100.0%
Total	9,207	5,221	2,801	967	957	752	1,894	900	22,699
Percent	40.6%	23.0%	12.3%	4.3%	4.2%	3.3%	8.3%	4.0%	100.0%
<i>2005-2006</i>									
Remedial	61	88	102	47	72	101	71	721	1,263
Percent	4.8%	7.0%	8.1%	3.7%	5.7%	8.0%	5.6%	57.1%	100.0%
Lower Division	6,447	4,091	2,404	868	843	777	2,179	68	17,677
Percent	36.5%	23.1%	13.6%	4.9%	4.8%	4.4%	12.3%	0.4%	100.0%
Upper Division	1,890	730	328	54	33	26	119	297	3,477
Percent	54.4%	21.0%	9.4%	1.6%	0.9%	0.7%	3.4%	8.5%	100.0%
Graduate	1,087	281	12	1	4	9	26	48	1,468
Percent	74.0%	19.1%	0.8%	0.1%	0.3%	0.6%	1.8%	3.3%	100.0%
Total	9,485	5,190	2,846	970	952	913	2,395	1,134	23,885
Percent	39.7%	21.7%	11.9%	4.1%	4.0%	3.8%	10.0%	4.7%	100.0%
<i>2006-2007</i>									
Remedial	83	128	90	64	81	74	58	736	1,314
Percent	6.3%	9.7%	6.8%	4.9%	6.2%	5.6%	4.4%	56.0%	100.0%
Lower Division	5,983	3,666	2,136	748	862	741	1,961	113	16,210
Percent	36.9%	22.6%	13.2%	4.6%	5.3%	4.6%	12.1%	0.7%	100.0%
Upper Division	2,093	838	251	34	18	24	97	297	3,652
Percent	57.3%	22.9%	6.9%	0.9%	0.5%	0.7%	2.7%	8.1%	100.0%
Graduate	1,351	341	22	0	2	15	44	78	1,853
Percent	72.9%	18.4%	1.2%	0.0%	0.1%	0.8%	2.4%	4.2%	100.0%
Total	9,510	4,973	2,499	846	963	854	2,160	1,224	23,029
Percent	41.3%	21.6%	10.9%	3.7%	4.2%	3.7%	9.4%	5.3%	100.0%
<i>2007-2008</i>									
Remedial	98	164	117	70	86	98	38	453	1,124
Percent	8.7%	14.6%	10.4%	6.2%	7.7%	8.7%	3.4%	40.3%	100.0%
Lower Division	5,299	3,350	2,031	791	807	733	992	114	14,117
Percent	37.5%	23.7%	14.4%	5.6%	5.7%	5.2%	7.0%	0.8%	100.0%
Upper Division	2,146	695	223	29	23	23	50	474	3,663
Percent	58.6%	19.0%	6.1%	0.8%	0.6%	0.6%	1.4%	12.9%	100.0%
Graduate	1,675	463	30	1	7	19	37	133	2,365
Percent	70.8%	19.6%	1.3%	0.0%	0.3%	0.8%	1.6%	5.6%	100.0%
Total	9,218	4,672	2,401	891	923	873	1,117	1,174	21,269
Percent	43.3%	22.0%	11.3%	4.2%	4.3%	4.1%	5.3%	5.5%	100.0%

Grade Distribution of All Faculty for 2007-08



■ Remedial
 ■ Lower Division
 ■ Upper Division
 ■ Graduate
 ■ Total

Grade Distribution by Level of Instruction

Grade Distribution by Level of Instruction									
All Faculty	A's	B's	C's	D's	F's	WF's	W's	Other	Total
<i>2004-2005</i>									
Remedial	123	254	213	142	123	155	85	516	1,611
Percent	7.6%	15.8%	13.2%	8.8%	7.6%	9.6%	5.3%	32.0%	100.0%
Lower Division	13,989	9,993	6,200	2,566	2,274	1,364	3,886	239	40,511
Percent	34.5%	24.7%	15.3%	6.3%	5.6%	3.4%	9.6%	0.6%	100.0%
Upper Division	6,798	4,850	2,417	647	353	237	897	744	16,943
Percent	40.1%	28.6%	14.3%	3.8%	2.1%	1.4%	5.3%	4.4%	100.0%
Graduate	3,762	835	90	11	15	21	174	371	5,279
Percent	71.3%	15.8%	1.7%	0.2%	0.3%	0.4%	3.3%	7.0%	100.0%
Total	24,672	15,932	8,920	3,366	2,765	1,777	5,042	1,870	64,344
Percent	38.3%	24.8%	13.9%	5.2%	4.3%	2.8%	7.8%	2.9%	100.0%
<i>2005-2006</i>									
Remedial	103	285	247	147	140	222	126	823	2,093
Percent	4.9%	13.6%	11.8%	7.0%	6.7%	10.6%	6.0%	39.3%	100.0%
Lower Division	13,637	9,425	6,198	2,673	2,217	1,617	4,834	233	40,834
Percent	33.4%	23.1%	15.2%	6.5%	5.4%	4.0%	11.8%	0.6%	100.0%
Upper Division	7,104	5,291	2,624	612	412	274	1,082	817	18,216
Percent	39.0%	29.0%	14.4%	3.4%	2.3%	1.5%	5.9%	4.5%	100.0%
Graduate	3,496	846	82	8	23	32	187	464	5,138
Percent	68.0%	16.5%	1.6%	0.2%	0.4%	0.6%	3.6%	9.0%	100.0%
Total	24,340	15,847	9,151	3,440	2,792	2,145	6,229	2,337	66,281
Percent	36.7%	23.9%	13.8%	5.2%	4.2%	3.2%	9.4%	3.5%	100.0%
<i>2006-2007</i>									
Remedial	159	356	397	192	230	214	129	852	2,529
Percent	6.3%	14.1%	15.7%	7.6%	9.1%	8.5%	5.1%	33.7%	100.0%
Lower Division	13,637	9,769	6,459	2,568	2,345	1,730	4,423	267	41,198
Percent	33.1%	23.7%	15.7%	6.2%	5.7%	4.2%	10.7%	0.6%	100.0%
Upper Division	7,449	5,677	2,674	637	344	319	990	905	18,995
Percent	39.2%	29.9%	14.1%	3.4%	1.8%	1.7%	5.2%	4.8%	100.0%
Graduate	3,425	877	106	5	19	42	202	510	5,186
Percent	66.0%	16.9%	2.0%	0.1%	0.4%	0.8%	3.9%	9.8%	100.0%
Total	24,670	16,679	9,636	3,402	2,938	2,305	5,744	2,534	67,908
Percent	36.3%	24.6%	14.2%	5.0%	4.3%	3.4%	8.5%	3.7%	100.0%
<i>2007-2008</i>									
Remedial	200	397	331	199	281	248	72	642	2,370
Percent	8.4%	16.8%	14.0%	8.4%	11.9%	10.5%	3.0%	27.1%	100.0%
Lower Division	12,495	9,870	6,590	2,811	2,338	1,974	2,215	211	38,504
Percent	32.5%	25.6%	17.1%	7.3%	6.1%	5.1%	5.8%	0.5%	100.0%
Upper Division	7,767	5,860	3,031	679	426	358	564	1,148	19,833
Percent	39.2%	29.5%	15.3%	3.4%	2.1%	1.8%	2.8%	5.8%	100.0%
Graduate	4,223	1,043	150	17	62	74	145	737	6,451
Percent	65.5%	16.2%	2.3%	0.3%	1.0%	1.1%	2.2%	11.4%	100.0%
Total	24,685	17,170	10,102	3,706	3,107	2,654	2,996	2,738	67,158
Percent	36.8%	25.6%	15.0%	5.5%	4.6%	4.0%	4.5%	4.1%	100.0%