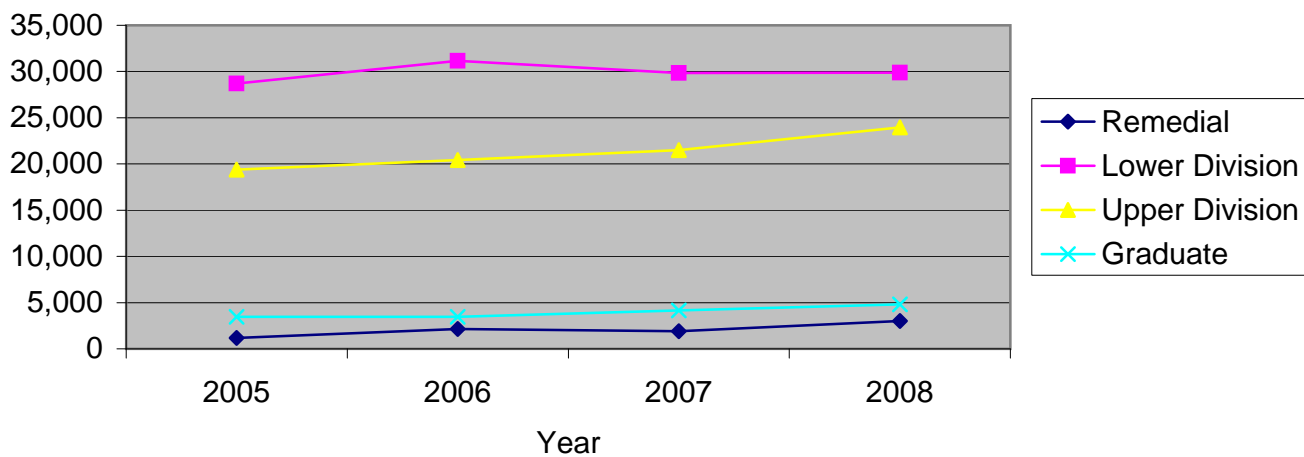


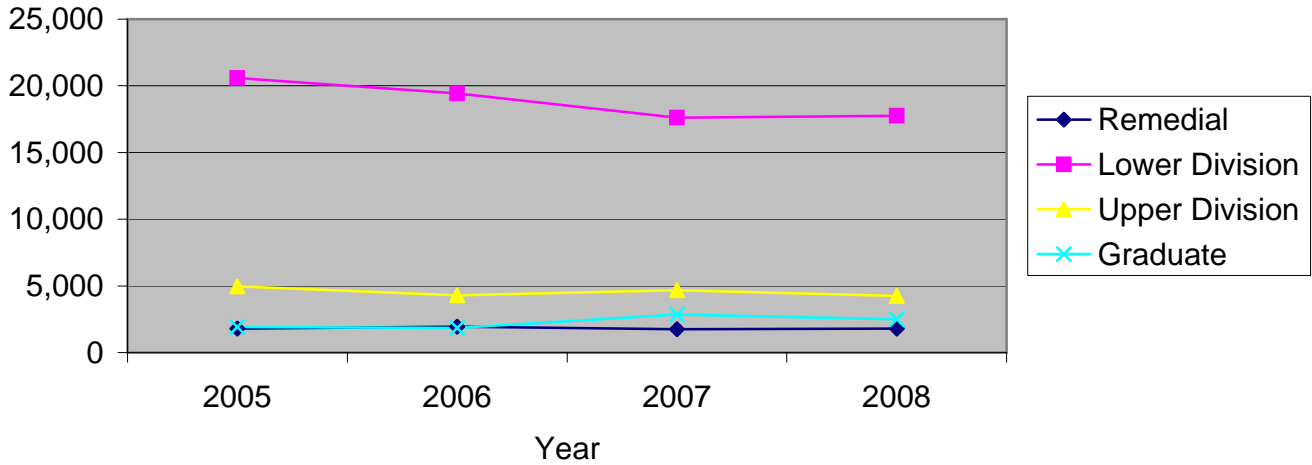
CSU Facts & Figures 2008: Credit Hours Taught

Credit Hours Taught: Full-Time Faculty



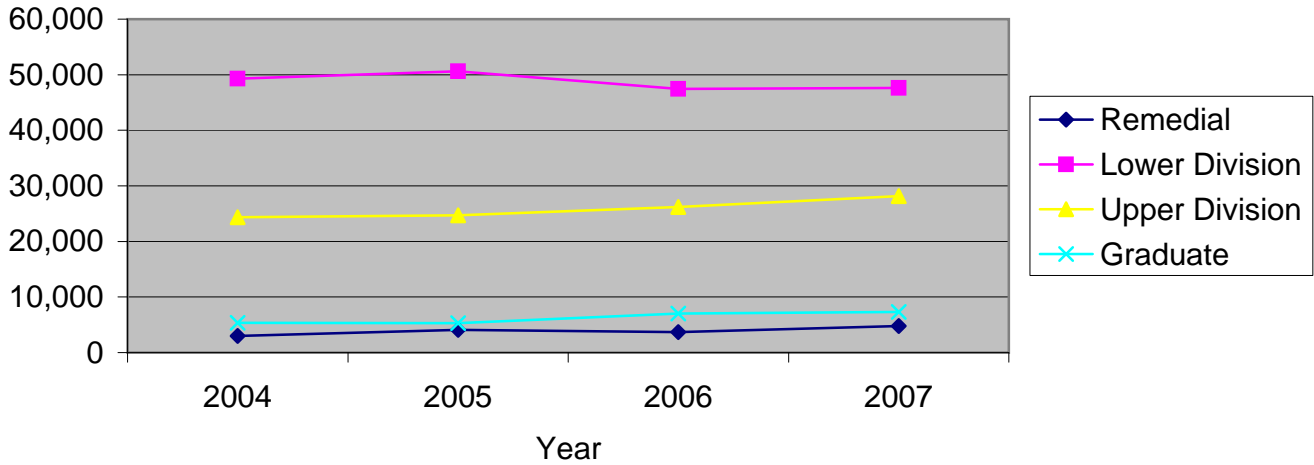
Credit Hours Taught by College and Level of Instruction								
Full-Time Faculty	Fall 2005		Fall 2006		Fall 2007		Fall 2008	
	# Sections	SCH	# Sections	SCH	# Sections	SCH	# Sections	SCH
<i>Arts & Letters</i>								
Remdial	0	0	0	0	2	110	2	66
Lower Division	181	10,817	200	11,897	184	11,000	190	10,205
Upper Division	242	5,936	221	5,836	219	5,950	223	6,204
Graduate	42	696	40	769	50	766	51	954
<i>College Total</i>	465	17,449	461	18,502	455	17,826	466	17,429
<i>% of Univ Total</i>	41.9%	33.1%	40.6%	32.3%	40.8%	31.0%	40.2%	28.3%
<i>Business</i>								
Lower Division	17	3,018	27	3,978	23	3,303	22	3,627
Upper Division	61	5,121	59	5,388	64	6,012	73	6,471
Graduate	4	342	4	246	4	300	4	423
<i>College Total</i>	82	8,481	90	9,612	91	9,615	99	10,521
<i>% of Univ Total</i>	7.4%	16.1%	7.9%	16.8%	8.2%	16.7%	8.5%	17.1%
<i>Education</i>								
Lower Division	43	2,229	50	2,090	45	2,007	34	2,071
Upper Division	53	2,143	56	2,839	52	3,224	52	3,217
Graduate	68	1,953	67	1,893	68	2,428	75	2,598
<i>College Total</i>	164	6,325	173	6,822	165	7,659	161	7,886
<i>% of Univ Total</i>	14.8%	12.0%	15.2%	11.9%	14.8%	13.3%	13.9%	12.8%
<i>Science</i>								
Lower Division	140	12,122	155	12,533	157	12,817	151	13,276
Upper Division	176	5,987	164	6,152	148	6,006	165	7,654
Graduate	41	479	31	562	38	657	41	832
<i>College Total</i>	357	18,588	350	19,247	343	19,480	357	21,762
<i>% of Univ Total</i>	32.2%	35.2%	30.8%	33.6%	30.7%	33.9%	30.8%	35.3%
<i>University College *</i>								
Remedial	14	1,192	25	2,152	21	1,808	29	2,936
Lower Division	10	385	14	444	17	466	24	587
Upper Division	1	3	2	15	10	126	22	403
<i>College Total</i>	25	1,580	41	2,611	48	2,400	75	3,926
<i>% of Univ Total</i>	2.3%	3.0%	3.6%	4.6%	4.3%	4.2%	6.5%	6.4%
<i>Other *</i>								
Lower Division	6	127	9	221	7	250	2	102
Upper Division	10	198	11	187	7	195	0	0
<i>Total</i>	16	325	20	408	14	445	2	102
<i>% of Univ Total</i>	1.4%	0.6%	1.8%	0.7%	1.3%	0.8%	0.2%	0.2%
<i>University Total</i>								
Remedial	14	1,192	25	2,152	23	1,918	31	3,002
Lower Division	397	28,698	455	31,163	433	29,843	423	29,868
Upper Division	543	19,388	513	20,417	500	21,513	535	23,949
Graduate	155	3,470	142	3,470	160	4,151	171	4,807
<i>Total</i>	1,109	52,748	1,135	57,202	1,116	57,425	1,160	61,626

Credit Hours Taught: Part-Time Faculty



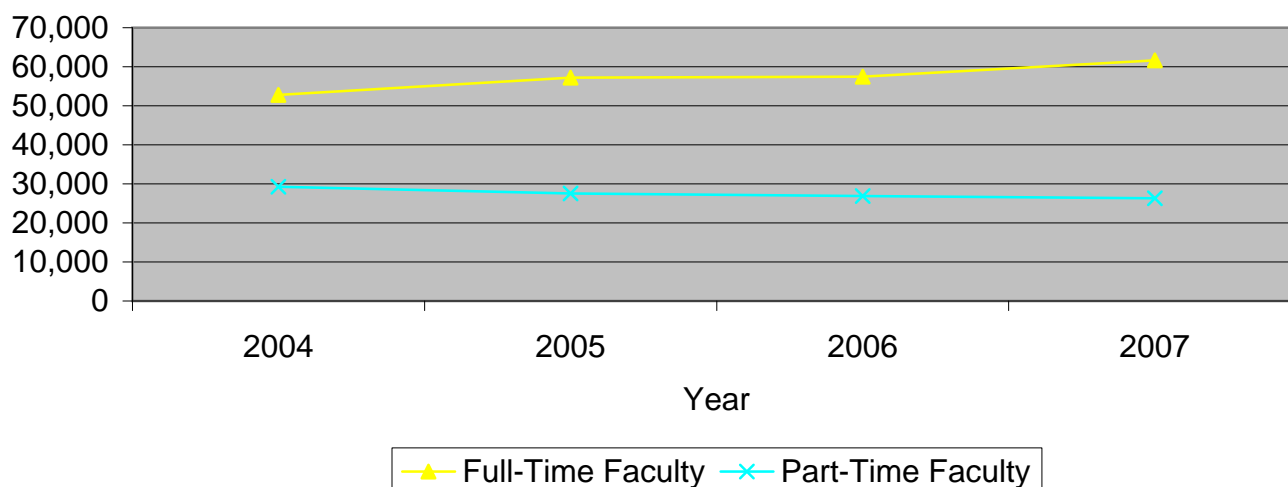
Credit Hours Taught by College and Level of Instruction								
Part-Time Faculty	Fall 2005		Fall 2006		Fall 2007		Fall 2008	
	# Sections	SCH	# Sections	SCH	# Sections	SCH	# Sections	SCH
<i>Arts & Letters</i>								
Remedial	3	290	5	342	2	96	3	84
Lower Division	172	10,675	187	11,656	164	9,930	165	9,625
Upper Division	75	2,639	106	2,908	82	2,779	83	3,173
Graduate	42	1,592	42	1,512	41	1,687	46	1,568
<i>College Total</i>	292	15,196	340	16,418	289	14,492	297	14,450
<i>% of Univ Total</i>	52.2%	52.0%	57.7%	59.6%	51.5%	53.9%	52.9%	55.0%
<i>Business</i>								
Lower Division	8	1,365	5	672	7	783	5	684
Upper Division	5	570	3	201	3	186	1	87
Graduate	0	0	0	0	0	0	0	0
<i>College Total</i>	13	1,935	8	873	10	969	6	771
<i>% of Univ Total</i>	2.3%	6.6%	1.4%	3.2%	1.8%	3.6%	1.1%	2.9%
<i>Education</i>								
Lower Division	60	2,222	58	2,151	54	2,141	58	2,123
Upper Division	20	948	12	536	15	785	12	470
Graduate	17	313	16	306	25	1,069	24	764
<i>College Total</i>	97	3,483	86	2,993	94	3,995	94	3,357
<i>% of Univ Total</i>	17.4%	11.9%	14.6%	10.9%	16.8%	14.9%	16.8%	12.8%
<i>Science</i>								
Lower Division	68	4,989	60	3,548	62	3,438	68	3,977
Upper Division	18	798	17	657	30	933	24	506
Graduate	1	3	1	30	5	96	5	171
<i>College Total</i>	87	5,790	78	4,235	97	4,467	97	4,654
<i>% of Univ Total</i>	15.6%	19.8%	13.2%	15.4%	17.3%	16.6%	17.3%	17.7%
<i>University College *</i>								
Remedial	22	1,520	23	1,592	24	1,652	25	1,708
Lower Division	48	1,326	54	1,417	47	1,327	42	1,355
Upper Division	0	0	0	0	0	0	0	0
<i>College Total</i>	70	2,846	77	3,009	71	2,979	67	3,063
<i>% of Univ Total</i>	12.5%	9.7%	13.1%	10.9%	12.7%	11.1%	11.9%	11.6%
<i>Other *</i>								
Lower Division	0	0	0	0	0	0	0	0
Upper Division	0	0	0	0	0	0	0	0
<i>Total</i>	0	0	0	0	0	0	0	0
<i>% of Univ Total</i>	0.0%	0.0%	0.0%	0.0%	0.0%	0.0%	0.0%	0.0%
<i>University Total</i>								
Remedial	25	1,810	28	1,934	26	1,748	28	1,792
Lower Division	356	20,577	364	19,444	334	17,619	338	17,764
Upper Division	118	4,955	138	4,302	130	4,683	120	4,236
Graduate	60	1,908	59	1,848	71	2,852	75	2,503
<i>Total</i>	559	29,250	589	27,528	561	26,902	561	26,295

Credit Hours Taught: All Faculty



Credit Hours Taught by College and Level of Instruction								
All Faculty	Fall 2005		Fall 2006		Fall 2007		Fall 2008	
	# Sections	SCH	# Sections	SCH	# Sections	SCH	# Sections	SCH
<i>Arts & Letters</i>								
Remedial	3	290	5	342	4	206	5	150
Lower Division	353	21,492	387	23,553	348	20,930	355	19,830
Upper Division	317	8,575	327	8,744	301	8,729	306	9,377
Graduate	84	2,288	82	2,281	91	2,453	97	2,522
<i>College Total</i>	757	32,645	801	34,920	744	32,318	763	31,879
<i>% of Univ Total</i>	45.4%	39.8%	46.5%	41.2%	44.4%	38.3%	44.3%	36.3%
<i>Business</i>								
Lower Division	25	4,383	32	4,650	30	4,086	27	4,311
Upper Division	66	5,691	62	5,589	67	6,198	74	6,558
Graduate	4	342	4	246	4	300	4	423
<i>College Total</i>	95	10,416	98	10,485	101	10,584	105	11,292
<i>% of Univ Total</i>	5.7%	12.7%	5.7%	12.4%	6.0%	12.6%	6.1%	12.8%
<i>Education</i>								
Lower Division	103	4,451	108	4,241	99	4,148	92	4,194
Upper Division	73	3,091	68	3,375	67	4,009	64	3,687
Graduate	85	2,266	83	2,199	93	3,497	99	3,362
<i>College Total</i>	261	9,808	259	9,815	259	11,654	255	11,243
<i>% of Univ Total</i>	15.6%	12.0%	15.0%	11.6%	15.4%	13.8%	14.8%	12.8%
<i>Science</i>								
Lower Division	208	17,111	215	16,081	219	16,255	219	17,253
Upper Division	194	6,785	181	6,809	178	6,939	189	8,160
Graduate	42	482	32	592	43	753	46	1,003
<i>College Total</i>	444	24,378	428	23,482	440	23,947	454	26,416
<i>% of Univ Total</i>	26.6%	29.7%	24.8%	27.7%	26.2%	28.4%	26.4%	30.0%
<i>University College *</i>								
Remedial	36	2,712	48	3,744	45	3,460	54	4,644
Lower Division	58	1,711	68	1,861	64	1,793	66	1,942
Upper Division	1	3	2	15	10	126	22	403
<i>College Total</i>	95	4,426	118	5,620	119	5,379	142	6,989
<i>% of Univ Total</i>	5.7%	5.4%	6.8%	6.6%	7.1%	6.4%	8.3%	7.9%
<i>Other *</i>								
Lower Division	6	127	9	221	7	250	2	102
Upper Division	10	198	11	187	7	195	0	0
<i>Total</i>	16	325	20	408	14	445	2	102
<i>% of Univ Total</i>	1.0%	0.4%	1.2%	0.5%	0.8%	0.5%	0.1%	0.1%
<i>University Total</i>								
Remedial	39	3,002	53	4,086	49	3,666	59	4,794
Lower Division	753	49,275	819	50,607	767	47,462	761	47,632
Upper Division	661	24,343	651	24,719	630	26,196	655	28,185
Graduate	215	5,378	201	5,318	231	7,003	246	7,310
<i>Total</i>	1,668	81,998	1,724	84,730	1,677	84,327	1,721	87,921

Credit Hours Taught by Faculty Status



Credit Hours Taught by College and Faculty Status								
All Faculty	Fall 2005		Fall 2006		Fall 2007		Fall 2008	
	# Sections	SCH	# Sections	SCH	# Sections	SCH	# Sections	SCH
<i>Arts & Letters</i>								
Full-Time Faculty	465	17,449	461	18,502	455	17,826	466	17,429
Part-Time Faculty	292	15,196	340	16,418	289	14,492	297	14,450
<i>College Total</i>	757	32,645	801	34,920	744	32,318	763	31,879
<i>% of Univ Total</i>	45.4%	39.8%	46.5%	41.2%	44.4%	38.3%	44.3%	36.3%
<i>Business</i>								
Full-Time Faculty	82	8,481	90	9,612	91	9,615	99	10,521
Part-Time Faculty	13	1,935	8	873	10	969	6	771
<i>College Total</i>	95	10,416	98	10,485	101	10,584	105	11,292
<i>% of Univ Total</i>	5.7%	12.7%	5.7%	12.4%	6.0%	12.6%	6.1%	12.8%
<i>Education</i>								
Full-Time Faculty	164	6,325	173	6,822	165	7,659	161	7,886
Part-Time Faculty	97	3,483	86	2,993	94	3,995	94	3,357
<i>College Total</i>	261	9,808	259	9,815	259	11,654	255	11,243
<i>% of Univ Total</i>	15.6%	12.0%	15.0%	11.6%	15.4%	13.8%	14.8%	12.8%
<i>Science</i>								
Full-Time Faculty	357	18,588	350	19,247	343	19,480	357	21,762
Part-Time Faculty	87	5,790	78	4,235	97	4,467	97	4,654
<i>College Total</i>	444	24,378	428	23,482	440	23,947	454	26,416
<i>% of Univ Total</i>	26.6%	29.7%	24.8%	27.7%	26.2%	28.4%	26.4%	30.0%
<i>University College *</i>								
Full-Time Faculty	25	1,580	41	2,611	48	2,400	75	3,926
Part-Time Faculty	70	2,846	77	3,009	71	2,979	67	3,063
<i>College Total</i>	95	4,426	118	5,620	119	5,379	142	6,989
<i>% of Univ Total</i>	5.7%	5.4%	6.8%	6.6%	7.1%	6.4%	8.3%	7.9%
<i>Other *</i>								
Full-Time Faculty	16	325	20	408	14	445	2	102
Part-Time Faculty	0	0	0	0	0	0	0	0
<i>Total</i>	16	325	20	408	14	445	2	102
<i>% of Univ Total</i>	1.0%	0.4%	1.2%	0.5%	0.8%	0.5%	0.1%	0.1%
<i>University Total</i>								
Full-Time Faculty	1,109	52,748	1,135	57,202	1,116	57,425	1,160	61,626
Part-Time Faculty	559	29,250	589	27,528	561	26,902	561	26,295
<i>Total</i>	1,668	81,998	1,724	84,730	1,677	84,327	1,721	87,921

* Note: In 2008, assignment for the Department of Military Science was changed from a separate unit (other) in Academic Affairs to University College.