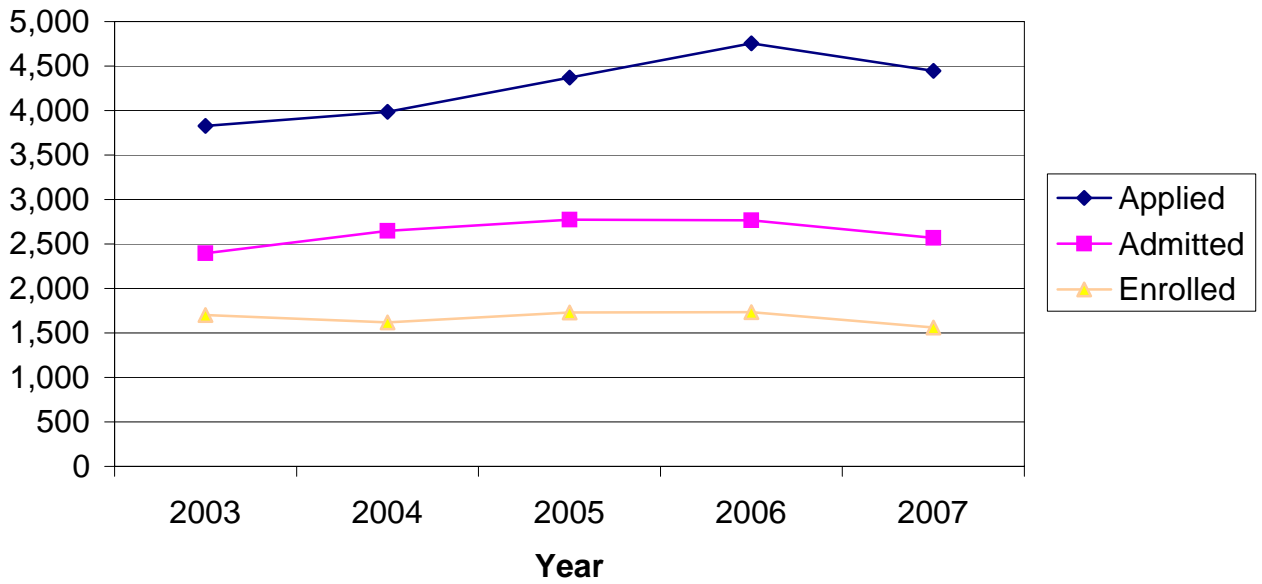


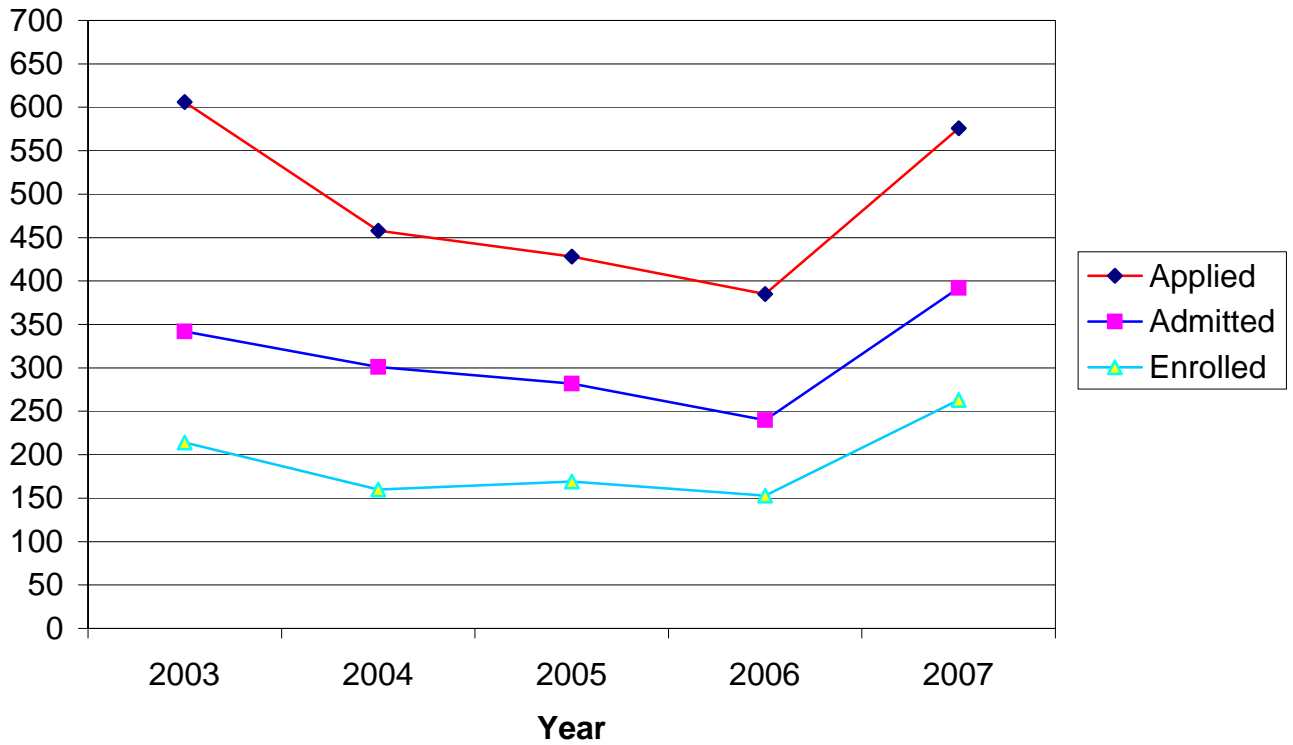
# CSU Facts & Figures 2007: Applications Received

## Undergraduate Applications Received



Undergraduate Applications Received							
	Fall 2003	Fall 2004	Fall 2005	Fall 2006	Fall 2007	4-Year # Change	4-Year % Change
<b>Applied</b>							
Entering Freshmen	2,648	2,614	3,007	3,307	3,093	445	16.8%
Transfer Students	1,119	1,292	1,291	1,372	1,282	163	14.6%
Other New Students	61	80	74	75	71	10	16.4%
<b>Total</b>	<b>3,828</b>	<b>3,986</b>	<b>4,372</b>	<b>4,754</b>	<b>4,446</b>	<b>618</b>	<b>16.1%</b>
<b>Accepted</b>							
Entering Freshmen	1,703	1,708	1,844	1,833	1,681	-22	-1.3%
Transfer Students	668	887	872	884	838	170	25.4%
Other New Students	25	52	56	50	49	24	96.0%
<b>Total</b>	<b>2,396</b>	<b>2,647</b>	<b>2,772</b>	<b>2,767</b>	<b>2,568</b>	<b>172</b>	<b>7.2%</b>
<b>Enrolled</b>							
Entering Freshmen	1,157	1,058	1,184	1,167	1,035	-122	-10.5%
Transfer Students	509	529	512	526	492	-17	-3.3%
Other New Students	37	32	34	40	35	-2	-5.4%
<b>Total</b>	<b>1,703</b>	<b>1,619</b>	<b>1,730</b>	<b>1,733</b>	<b>1,562</b>	<b>-141</b>	<b>-8.3%</b>

## Graduate Applications Received



Graduate Applications Received							
	Fall 2003	Fall 2004	Fall 2005	Fall 2006	Fall 2007	4-Year # Change	4-Year % Change
<b>Applied</b>							
MBA	35	33	36	35	55	20	57.1%
MEd/MS - Education	274	185	161	145	229	-45	-16.4%
MPA	152	135	142	120	125	-27	-17.8%
MM	10	8	10	11	13	3	30.0%
MS-Environmental Science	11	13	9	6	5	-6	-54.5%
MS-Computer Science	54	48	40	39	50	-4	-7.4%
EdS	66	26	19	22	92	26	39.4%
Graduate-Other	4	10	11	7	7	3	75.0%
<i>Total</i>	<b>606</b>	<b>458</b>	<b>428</b>	<b>385</b>	<b>576</b>	<b>-52</b>	<b>-8.6%</b>
<b>Accepted</b>							
MBA	15	12	19	14	28	13	86.7%
MEd/MS - Education	144	129	89	73	142	-2	-1.4%
MPA	103	109	118	91	92	-11	-10.7%
MM	3	2	6	5	8	5	166.7%
MS-Environmental Science	8	2	5	5	4	-4	-50.0%
MS-Computer Science	35	27	27	31	34	-1	-2.9%
EdS	31	13	7	16	78	47	151.6%
Graduate-Other	3	7	11	5	6	3	100.0%
<i>Total</i>	<b>342</b>	<b>301</b>	<b>282</b>	<b>240</b>	<b>392</b>	<b>49</b>	<b>14.3%</b>
<b>Enrolled</b>							
MBA	12	13	17	14	21	9	75.0%
MEd/MS - Education	78	53	45	41	89	11	14.1%
MPA	82	67	77	62	64	-18	-22.0%
MM	3	1	6	4	5	2	66.7%
MS-Environmental Science	3	2	2	4	3	0	0.0%
MS-Computer Science	25	16	14	22	22	-3	-12.0%
EdS	9	5	3	4	53	44	488.9%
Graduate-Other	2	3	5	2	6	4	200.0%
<i>Total</i>	<b>214</b>	<b>160</b>	<b>169</b>	<b>153</b>	<b>263</b>	<b>49</b>	<b>22.9%</b>