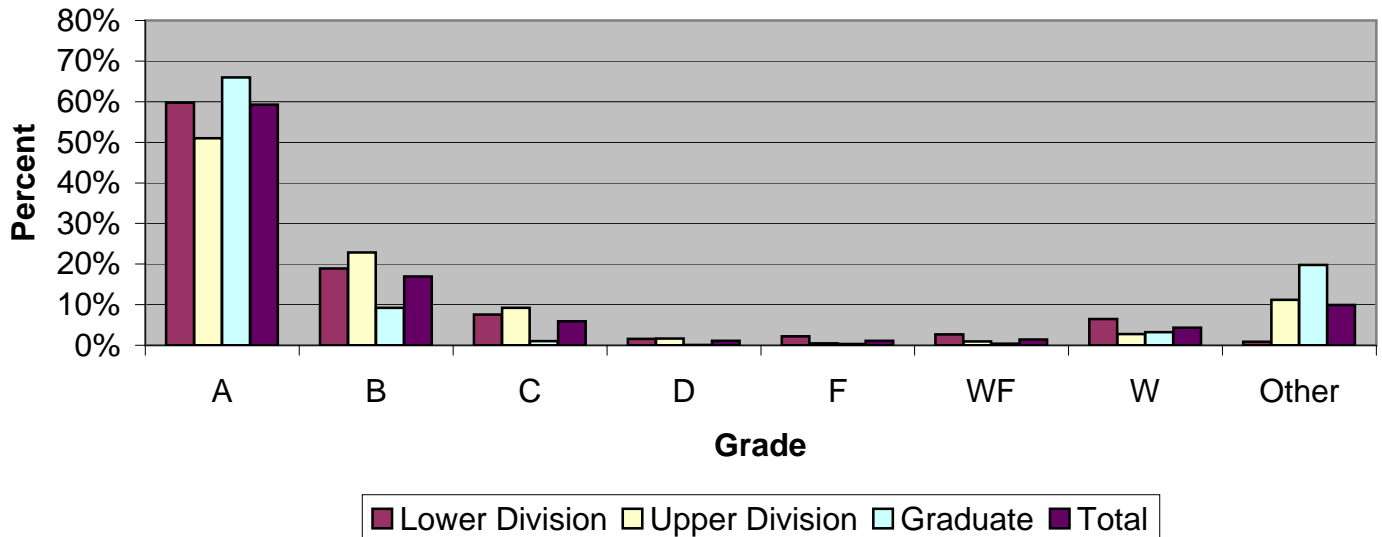


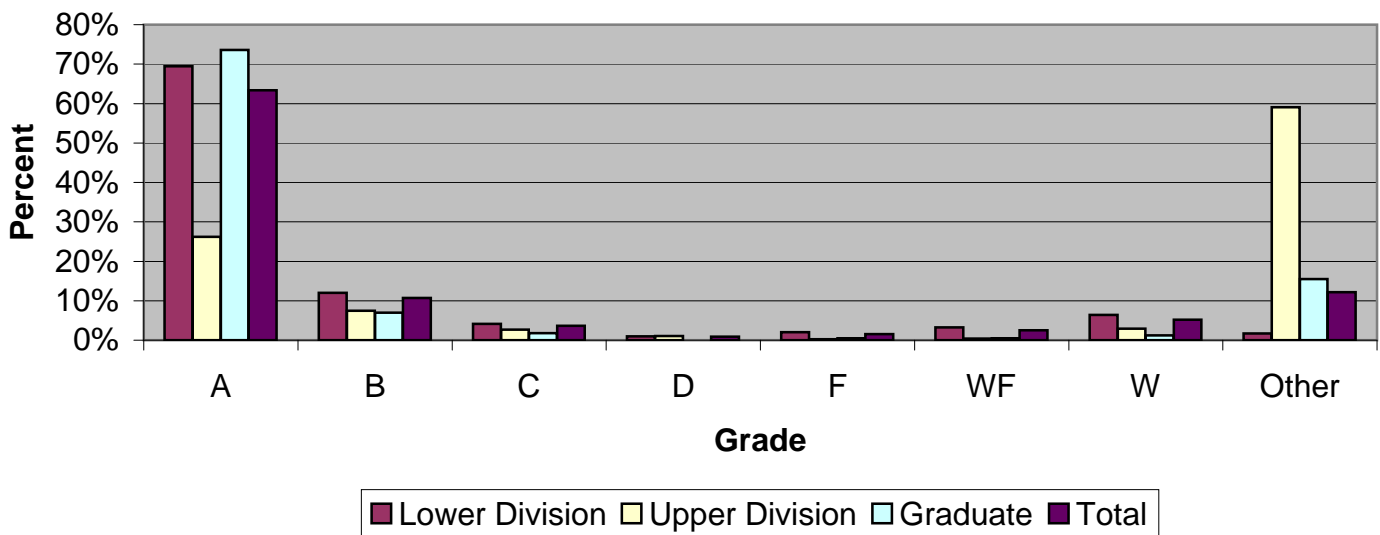
CSU Facts & Figures 2007: Grade Distribution

Grade Distribution of Full-Time Faculty for 2006-07 College of Education



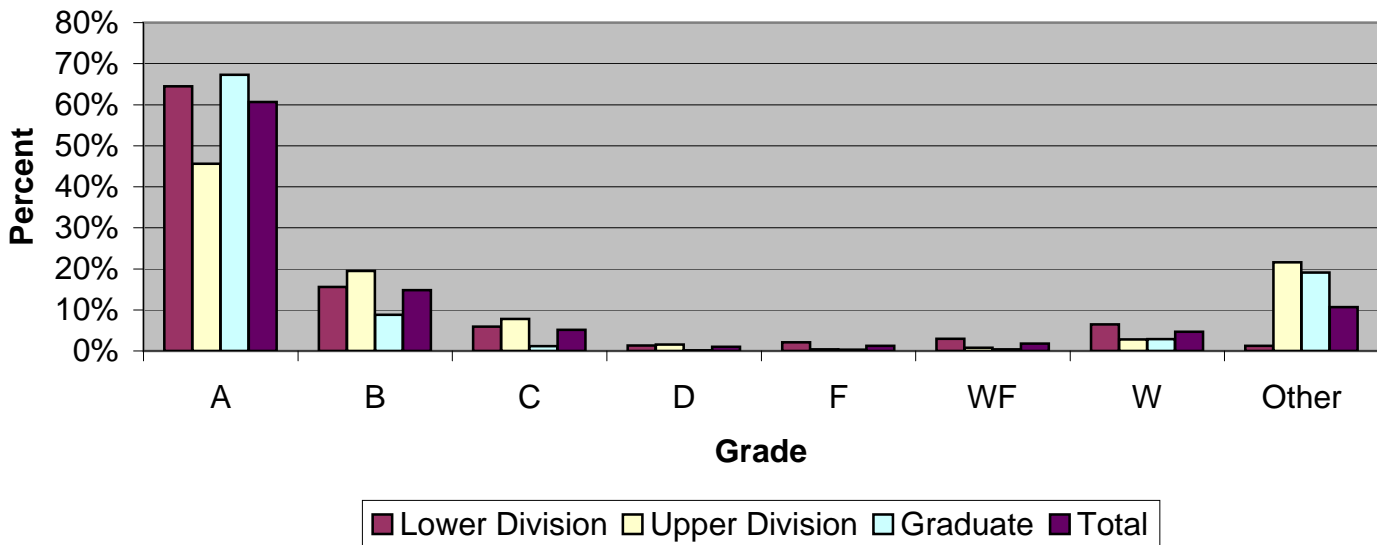
Grade Distribution by Level of Instruction - College of Education									
Full-Time Faculty	A's	B's	C's	D's	F's	WF's	W's	Other	Total
<i>2003-2004</i>									
Lower Division	973	244	78	23	17	27	111	12	1,485
Percent	65.5%	16.4%	5.3%	1.5%	1.1%	1.8%	7.5%	0.8%	100.0%
Upper Division	698	216	114	21	19	11	64	170	1,313
Percent	53.2%	16.5%	8.7%	1.6%	1.4%	0.8%	4.9%	12.9%	100.0%
Graduate	1,415	150	20	1	13	4	49	307	1,959
Percent	72.2%	7.7%	1.0%	0.1%	0.7%	0.2%	2.5%	15.7%	100.0%
Total	3,086	610	212	45	49	42	224	489	4,757
Percent	64.9%	12.8%	4.5%	0.9%	1.0%	0.9%	4.7%	10.3%	100.0%
<i>2004-2005</i>									
Lower Division	1,011	329	107	9	36	36	110	20	1,658
Percent	61.0%	19.8%	6.5%	0.5%	2.2%	2.2%	6.6%	1.2%	100.0%
Upper Division	685	299	96	21	13	7	47	160	1,328
Percent	51.6%	22.5%	7.2%	1.6%	1.0%	0.5%	3.5%	12.0%	100.0%
Graduate	1,309	213	27	2	1	6	52	266	1,876
Percent	69.8%	11.4%	1.4%	0.1%	0.1%	0.3%	2.8%	14.2%	100.0%
Total	3,005	841	230	32	50	49	209	446	4,862
Percent	61.8%	17.3%	4.7%	0.7%	1.0%	1.0%	4.3%	9.2%	100.0%
<i>2005-2006</i>									
Lower Division	1,350	417	121	34	49	40	195	51	2,257
Percent	59.8%	18.5%	5.4%	1.5%	2.2%	1.8%	8.6%	2.3%	100.0%
Upper Division	721	290	140	26	19	3	49	157	1,405
Percent	51.3%	20.6%	10.0%	1.9%	1.4%	0.2%	3.5%	11.2%	100.0%
Graduate	1,461	206	16	0	4	8	67	378	2,140
Percent	68.3%	9.6%	0.7%	0.0%	0.2%	0.4%	3.1%	17.7%	100.0%
Total	3,532	913	277	60	72	51	311	586	5,802
Percent	60.9%	15.7%	4.8%	1.0%	1.2%	0.9%	5.4%	10.1%	100.0%
<i>2006-2007</i>									
Lower Division	1,447	459	183	38	53	64	157	21	2,422
Percent	59.7%	19.0%	7.6%	1.6%	2.2%	2.6%	6.5%	0.9%	100.0%
Upper Division	892	400	161	29	8	16	48	196	1,750
Percent	51.0%	22.9%	9.2%	1.7%	0.5%	0.9%	2.7%	11.2%	100.0%
Graduate	1,313	183	21	1	6	8	64	394	1,990
Percent	66.0%	9.2%	1.1%	0.1%	0.3%	0.4%	3.2%	19.8%	100.0%
Total	3,652	1,042	365	68	67	88	269	611	6,162
Percent	59.3%	16.9%	5.9%	1.1%	1.1%	1.4%	4.4%	9.9%	100.0%

Grade Distribution of Part-Time Faculty for 2006-07
College of Education



Grade Distribution by Level of Instruction - College of Education									
Part-Time Faculty	A's	B's	C's	D's	F's	WF's	W's	Other	Total
<i>2003-2004</i>									
Lower Division	1,723	381	130	32	68	52	169	119	2,674
Percent	64.4%	14.2%	4.9%	1.2%	2.5%	1.9%	6.3%	4.5%	100.0%
Upper Division	429	94	28	6	6	11	22	200	796
Percent	53.9%	11.8%	3.5%	0.8%	0.8%	1.4%	2.8%	25.1%	100.0%
Graduate	782	64	10	0	3	4	33	79	975
Percent	80.2%	6.6%	1.0%	0.0%	0.3%	0.4%	3.4%	8.1%	100.0%
Total	2,934	539	168	38	77	67	224	398	4,445
Percent	66.0%	12.1%	3.8%	0.9%	1.7%	1.5%	5.0%	9.0%	100.0%
<i>2004-2005</i>									
Lower Division	2,078	417	120	28	51	66	165	32	2,957
Percent	70.3%	14.1%	4.1%	0.9%	1.7%	2.2%	5.6%	1.1%	100.0%
Upper Division	397	84	24	2	3	6	18	241	775
Percent	51.2%	10.8%	3.1%	0.3%	0.4%	0.8%	2.3%	31.1%	100.0%
Graduate	579	90	8	0	3	5	30	66	781
Percent	74.1%	11.5%	1.0%	0.0%	0.4%	0.6%	3.8%	8.5%	100.0%
Total	3,054	591	152	30	57	77	213	339	4,513
Percent	67.7%	13.1%	3.4%	0.7%	1.3%	1.7%	4.7%	7.5%	100.0%
<i>2005-2006</i>									
Lower Division	1,918	372	93	38	35	103	199	8	2,766
Percent	69.3%	13.4%	3.4%	1.4%	1.3%	3.7%	7.2%	0.3%	100.0%
Upper Division	295	71	18	2	5	8	34	273	706
Percent	41.8%	10.1%	2.5%	0.3%	0.7%	1.1%	4.8%	38.7%	100.0%
Graduate	221	23	0	0	0	2	9	38	293
Percent	75.4%	7.8%	0.0%	0.0%	0.0%	0.7%	3.1%	13.0%	100.0%
Total	2,434	466	111	40	40	113	242	319	3,765
Percent	64.6%	12.4%	2.9%	1.1%	1.1%	3.0%	6.4%	8.5%	100.0%
<i>2006-2007</i>									
Lower Division	1,590	275	95	23	46	75	147	39	2,290
Percent	69.4%	12.0%	4.1%	1.0%	2.0%	3.3%	6.4%	1.7%	100.0%
Upper Division	127	36	13	5	1	2	14	286	484
Percent	26.2%	7.4%	2.7%	1.0%	0.2%	0.4%	2.9%	59.1%	100.0%
Graduate	295	28	7	0	2	2	5	62	401
Percent	73.6%	7.0%	1.7%	0.0%	0.5%	0.5%	1.2%	15.5%	100.0%
Total	2,012	339	115	28	49	79	166	387	3,175
Percent	63.4%	10.7%	3.6%	0.9%	1.5%	2.5%	5.2%	12.2%	100.0%

Grade Distribution of All Faculty for 2006-07
College of Education



Grade Distribution by Level of Instruction - College of Education									
All Faculty	A's	B's	C's	D's	F's	WF's	W's	Other	Total
<i>2003-2004</i>									
Lower Division	2,696	625	208	55	85	79	280	131	4,159
Percent	64.8%	15.0%	5.0%	1.3%	2.0%	1.9%	6.7%	3.1%	100.0%
Upper Division	1,127	310	142	27	25	22	86	370	2,109
Percent	53.4%	14.7%	6.7%	1.3%	1.2%	1.0%	4.1%	17.5%	100.0%
Graduate	2,197	214	30	1	16	8	82	386	2,934
Percent	74.9%	7.3%	1.0%	0.0%	0.5%	0.3%	2.8%	13.2%	100.0%
Total	6,020	1,149	380	83	126	109	448	887	9,202
Percent	65.4%	12.5%	4.1%	0.9%	1.4%	1.2%	4.9%	9.6%	100.0%
<i>2004-2005</i>									
Lower Division	3,089	746	227	37	87	102	275	52	4,615
Percent	66.9%	16.2%	4.9%	0.8%	1.9%	2.2%	6.0%	1.1%	100.0%
Upper Division	1,082	383	120	23	16	13	65	401	2,103
Percent	51.5%	18.2%	5.7%	1.1%	0.8%	0.6%	3.1%	19.1%	100.0%
Graduate	1,888	303	35	2	4	11	82	332	2,657
Percent	71.1%	11.4%	1.3%	0.1%	0.2%	0.4%	3.1%	12.5%	100.0%
Total	6,059	1,432	382	62	107	126	422	785	9,375
Percent	64.6%	15.3%	4.1%	0.7%	1.1%	1.3%	4.5%	8.4%	100.0%
<i>2005-2006</i>									
Lower Division	3,268	789	214	72	84	143	394	59	5,023
Percent	65.1%	15.7%	4.3%	1.4%	1.7%	2.8%	7.8%	1.2%	100.0%
Upper Division	1,016	361	158	28	24	11	83	430	2,111
Percent	48.1%	17.1%	7.5%	1.3%	1.1%	0.5%	3.9%	20.4%	100.0%
Graduate	1,682	229	16	0	4	10	76	416	2,433
Percent	69.1%	9.4%	0.7%	0.0%	0.2%	0.4%	3.1%	17.1%	100.0%
Total	5,966	1,379	388	100	112	164	553	905	9,567
Percent	62.4%	14.4%	4.1%	1.0%	1.2%	1.7%	5.8%	9.5%	100.0%
<i>2006-2007</i>									
Lower Division	3,037	734	278	61	99	139	304	60	4,712
Percent	64.5%	15.6%	5.9%	1.3%	2.1%	2.9%	6.5%	1.3%	100.0%
Upper Division	1,019	436	174	34	9	18	62	482	2,234
Percent	45.6%	19.5%	7.8%	1.5%	0.4%	0.8%	2.8%	21.6%	100.0%
Graduate	1,608	211	28	1	8	10	69	456	2,391
Percent	67.3%	8.8%	1.2%	0.0%	0.3%	0.4%	2.9%	19.1%	100.0%
Total	5,664	1,381	480	96	116	167	435	998	9,337
Percent	60.7%	14.8%	5.1%	1.0%	1.2%	1.8%	4.7%	10.7%	100.0%