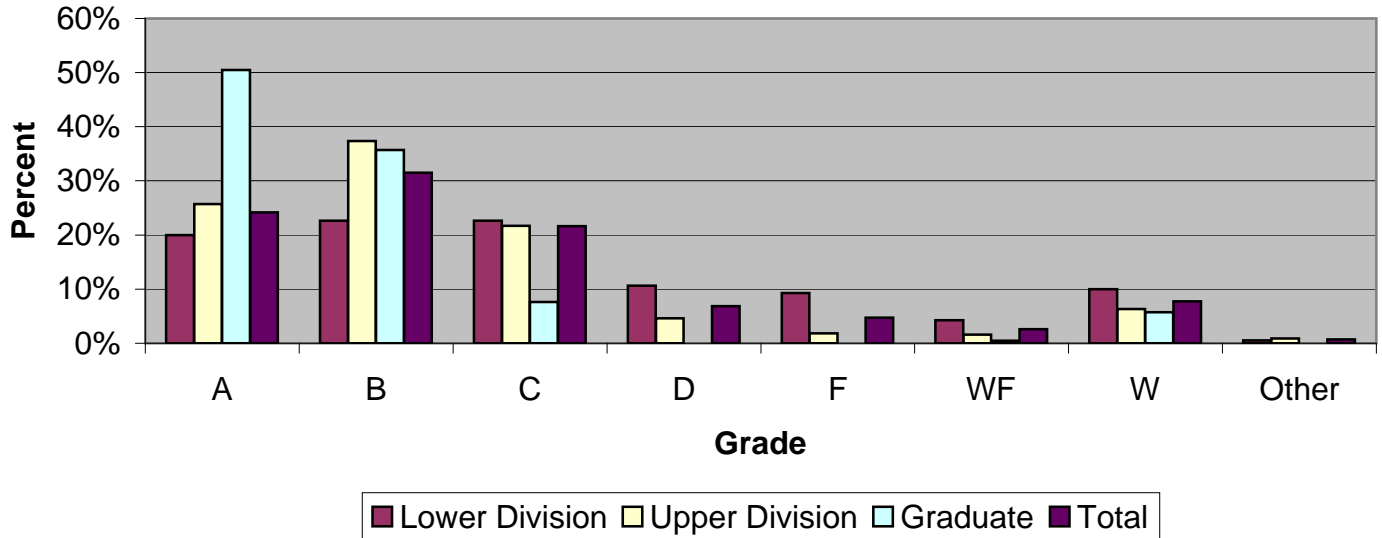


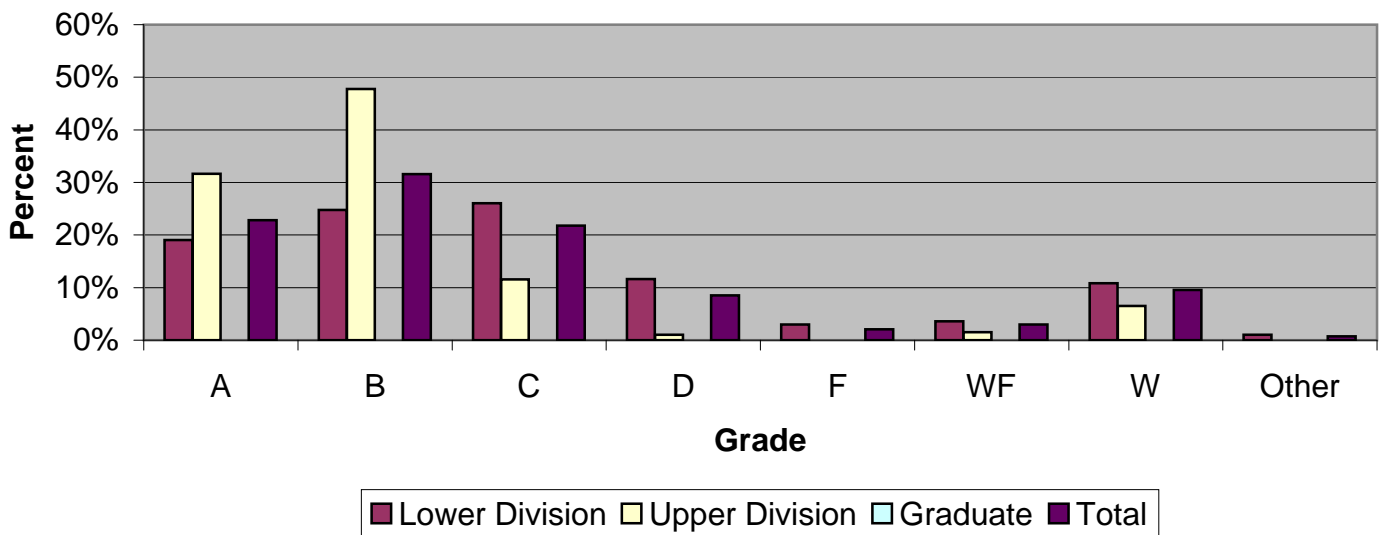
CSU Facts & Figures 2007: Grade Distribution

Grade Distribution of Full-Time Faculty for 2006-07 D. Abbott Turner College of Business



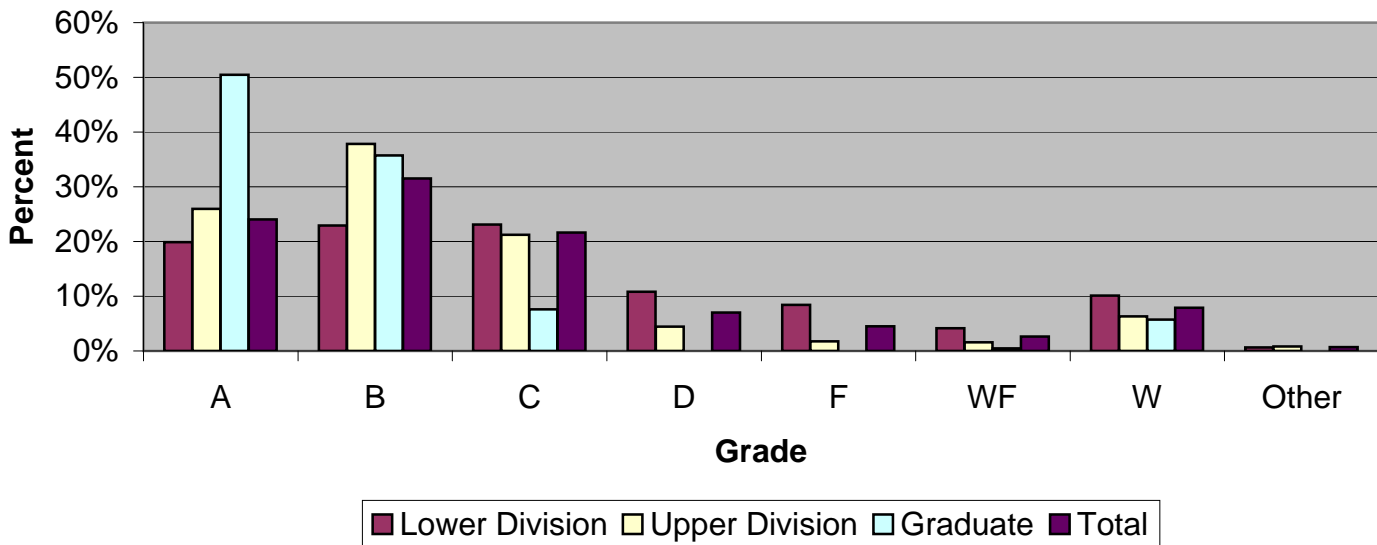
Grade Distribution by Level of Instruction - D. Abbott Turner College of Business									
Full-Time Faculty	A's	B's	C's	D's	F's	WF's	W's	Other	Total
<i>2003-2004</i>									
Lower Division	543	665	564	270	199	89	203	0	2,533
Percent	21.4%	26.3%	22.3%	10.7%	7.9%	3.5%	8.0%	0.0%	100.0%
Upper Division	758	1,238	758	238	78	39	193	25	3,327
Percent	22.8%	37.2%	22.8%	7.2%	2.3%	1.2%	5.8%	0.8%	100.0%
Graduate	109	109	13	0	0	4	20	0	255
Percent	42.7%	42.7%	5.1%	0.0%	0.0%	1.6%	7.8%	0.0%	100.0%
Total	1,410	2,012	1,335	508	277	132	416	25	6,115
Percent	23.1%	32.9%	21.8%	8.3%	4.5%	2.2%	6.8%	0.4%	100.0%
<i>2004-2005</i>									
Lower Division	621	652	596	299	213	78	242	8	2,709
Percent	22.9%	24.1%	22.0%	11.0%	7.9%	2.9%	8.9%	0.3%	100.0%
Upper Division	789	1,382	783	220	64	57	212	28	3,535
Percent	22.3%	39.1%	22.1%	6.2%	1.8%	1.6%	6.0%	0.8%	100.0%
Graduate	93	99	11	2	0	0	15	0	220
Percent	42.3%	45.0%	5.0%	0.9%	0.0%	0.0%	6.8%	0.0%	100.0%
Total	1,503	2,133	1,390	521	277	135	469	36	6,464
Percent	23.3%	33.0%	21.5%	8.1%	4.3%	2.1%	7.3%	0.6%	100.0%
<i>2005-2006</i>									
Lower Division	401	464	480	241	229	81	260	3	2,159
Percent	18.6%	21.5%	22.2%	11.2%	10.6%	3.8%	12.0%	0.1%	100.0%
Upper Division	1,003	1,459	873	190	104	71	260	23	3,983
Percent	25.2%	36.6%	21.9%	4.8%	2.6%	1.8%	6.5%	0.6%	100.0%
Graduate	145	96	14	0	1	2	5	0	263
Percent	55.1%	36.5%	5.3%	0.0%	0.4%	0.8%	1.9%	0.0%	100.0%
Total	1,549	2,019	1,367	431	334	154	525	26	6,405
Percent	24.2%	31.5%	21.3%	6.7%	5.2%	2.4%	8.2%	0.4%	100.0%
<i>2006-2007</i>									
Lower Division	585	663	662	312	272	124	293	16	2,927
Percent	20.0%	22.7%	22.6%	10.7%	9.3%	4.2%	10.0%	0.5%	100.0%
Upper Division	1,105	1,605	931	199	79	68	271	37	4,295
Percent	25.7%	37.4%	21.7%	4.6%	1.8%	1.6%	6.3%	0.9%	100.0%
Graduate	106	75	16	0	0	1	12	0	210
Percent	50.5%	35.7%	7.6%	0.0%	0.0%	0.5%	5.7%	0.0%	100.0%
Total	1,796	2,343	1,609	511	351	193	576	53	7,432
Percent	24.2%	31.5%	21.6%	6.9%	4.7%	2.6%	7.8%	0.7%	100.0%

Grade Distribution of Part-Time Faculty for 2006-07
D. Abbott Turner College of Business



Grade Distribution by Level of Instruction - D. Abbott Turner College of Business									
Part-Time Faculty	A's	B's	C's	D's	F's	WF's	W's	Other	Total
<i>2003-2004</i>									
Lower Division	59	111	121	45	27	15	51	0	429
Percent	13.8%	25.9%	28.2%	10.5%	6.3%	3.5%	11.9%	0.0%	100.0%
Upper Division	37	52	63	15	6	1	11	0	185
Percent	20.0%	28.1%	34.1%	8.1%	3.2%	0.5%	5.9%	0.0%	100.0%
Graduate	0	0	0	0	0	0	0	0	0
Percent	0.0%	0.0%	0.0%	0.0%	0.0%	0.0%	0.0%	0.0%	0.0%
Total	96	163	184	60	33	16	62	0	614
Percent	15.6%	26.5%	30.0%	9.8%	5.4%	2.6%	10.1%	0.0%	100.0%
<i>2004-2005</i>									
Lower Division	111	116	161	66	33	23	53	0	563
Percent	19.7%	20.6%	28.6%	11.7%	5.9%	4.1%	9.4%	0.0%	100.0%
Upper Division	43	98	57	8	4	2	14	0	226
Percent	19.0%	43.4%	25.2%	3.5%	1.8%	0.9%	6.2%	0.0%	100.0%
Graduate	0	0	0	0	0	0	0	0	0
Percent	0.0%	0.0%	0.0%	0.0%	0.0%	0.0%	0.0%	0.0%	0.0%
Total	154	214	218	74	37	25	67	0	789
Percent	19.5%	27.1%	27.6%	9.4%	4.7%	3.2%	8.5%	0.0%	100.0%
<i>2005-2006</i>									
Lower Division	200	222	208	76	34	41	144	2	927
Percent	21.6%	23.9%	22.4%	8.2%	3.7%	4.4%	15.5%	0.2%	100.0%
Upper Division	57	103	79	18	4	1	24	0	286
Percent	19.9%	36.0%	27.6%	6.3%	1.4%	0.3%	8.4%	0.0%	100.0%
Graduate	0	0	0	0	0	0	0	0	0
Percent	0.0%	0.0%	0.0%	0.0%	0.0%	0.0%	0.0%	0.0%	0.0%
Total	257	325	287	94	38	42	168	2	1,213
Percent	21.2%	26.8%	23.7%	7.7%	3.1%	3.5%	13.8%	0.2%	100.0%
<i>2006-2007</i>									
Lower Division	90	117	123	55	14	17	51	5	472
Percent	19.1%	24.8%	26.1%	11.7%	3.0%	3.6%	10.8%	1.1%	100.0%
Upper Division	63	95	23	2	0	3	13	0	199
Percent	31.7%	47.7%	11.6%	1.0%	0.0%	1.5%	6.5%	0.0%	100.0%
Graduate	0	0	0	0	0	0	0	0	0
Percent	0.0%	0.0%	0.0%	0.0%	0.0%	0.0%	0.0%	0.0%	0.0%
Total	153	212	146	57	14	20	64	5	671
Percent	22.8%	31.6%	21.8%	8.5%	2.1%	3.0%	9.5%	0.7%	100.0%

Grade Distribution of All Faculty for 2006-07
D. Abbott Turner College of Business



Grade Distribution by Level of Instruction - D. Abbott Turner College of Business									
All Faculty	A's	B's	C's	D's	F's	WF's	W's	Other	Total
<i>2003-2004</i>									
Lower Division	602	776	685	315	226	104	254	0	2,962
Percent	20.3%	26.2%	23.1%	10.6%	7.6%	3.5%	8.6%	0.0%	100.0%
Upper Division	795	1,290	821	253	84	40	204	25	3,512
Percent	22.6%	36.7%	23.4%	7.2%	2.4%	1.1%	5.8%	0.7%	100.0%
Graduate	109	109	13	0	0	4	20	0	255
Percent	42.7%	42.7%	5.1%	0.0%	0.0%	1.6%	7.8%	0.0%	100.0%
Total	1,506	2,175	1,519	568	310	148	478	25	6,729
Percent	22.4%	32.3%	22.6%	8.4%	4.6%	2.2%	7.1%	0.4%	100.0%
<i>2004-2005</i>									
Lower Division	732	768	757	365	246	101	295	8	3,272
Percent	22.4%	23.5%	23.1%	11.2%	7.5%	3.1%	9.0%	0.2%	100.0%
Upper Division	832	1,480	840	228	68	59	226	28	3,761
Percent	22.1%	39.4%	22.3%	6.1%	1.8%	1.6%	6.0%	0.7%	100.0%
Graduate	93	99	11	2	0	0	15	0	220
Percent	42.3%	45.0%	5.0%	0.9%	0.0%	0.0%	6.8%	0.0%	100.0%
Total	1,657	2,347	1,608	595	314	160	536	36	7,253
Percent	22.8%	32.4%	22.2%	8.2%	4.3%	2.2%	7.4%	0.5%	100.0%
<i>2005-2006</i>									
Lower Division	601	686	688	317	263	122	404	5	3,086
Percent	19.5%	22.2%	22.3%	10.3%	8.5%	4.0%	13.1%	0.2%	100.0%
Upper Division	1,060	1,562	952	208	108	72	284	23	4,269
Percent	24.8%	36.6%	22.3%	4.9%	2.5%	1.7%	6.7%	0.5%	100.0%
Graduate	145	96	14	0	1	2	5	0	263
Percent	55.1%	36.5%	5.3%	0.0%	0.4%	0.8%	1.9%	0.0%	100.0%
Total	1,806	2,344	1,654	525	372	196	693	28	7,618
Percent	23.7%	30.8%	21.7%	6.9%	4.9%	2.6%	9.1%	0.4%	100.0%
<i>2006-2007</i>									
Lower Division	675	780	785	367	286	141	344	21	3,399
Percent	19.9%	22.9%	23.1%	10.8%	8.4%	4.1%	10.1%	0.6%	100.0%
Upper Division	1,168	1,700	954	201	79	71	284	37	4,494
Percent	26.0%	37.8%	21.2%	4.5%	1.8%	1.6%	6.3%	0.8%	100.0%
Graduate	106	75	16	0	0	1	12	0	210
Percent	50.5%	35.7%	7.6%	0.0%	0.0%	0.5%	5.7%	0.0%	100.0%
Total	1,949	2,555	1,755	568	365	213	640	58	8,103
Percent	24.1%	31.5%	21.7%	7.0%	4.5%	2.6%	7.9%	0.7%	100.0%