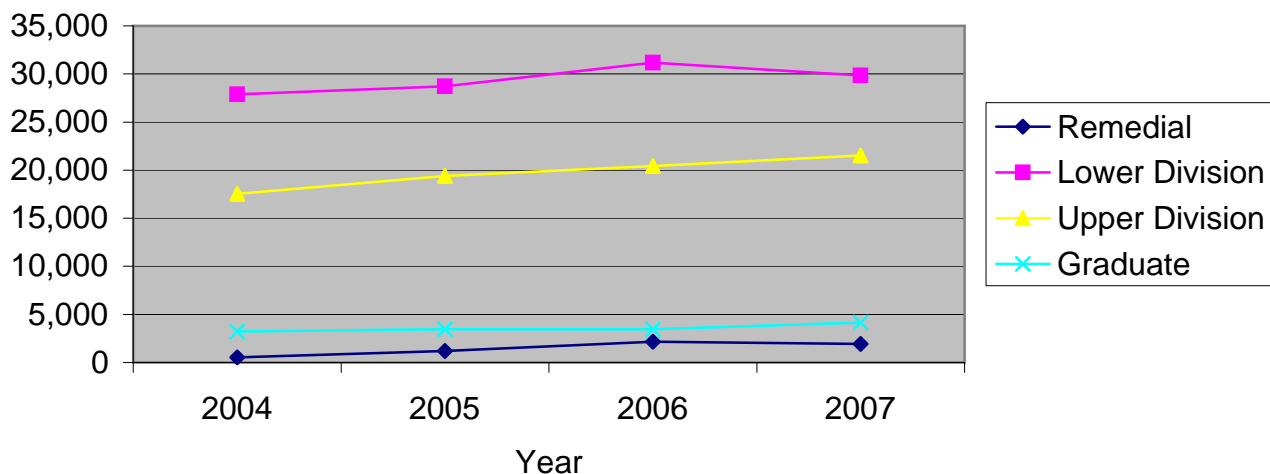


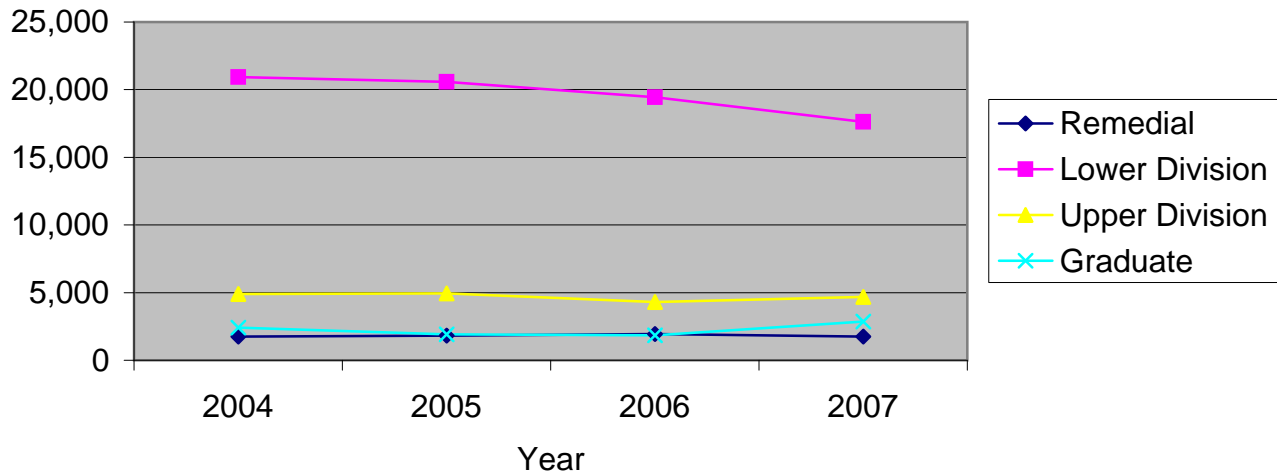
CSU Facts & Figures 2007: Credit Hours Taught

Credit Hours Taught: Full-Time Faculty



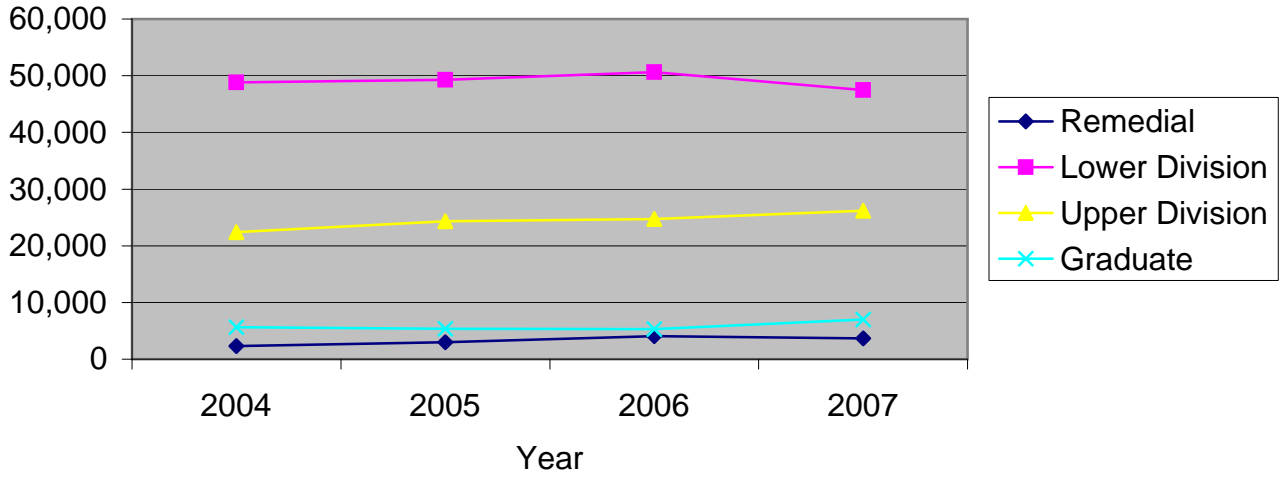
Credit Hours Taught by College and Level of Instruction								
Full-Time Faculty	Fall 2004		Fall 2005		Fall 2006		Fall 2007	
	# Sections	SCH	# Sections	SCH	# Sections	SCH	# Sections	SCH
<i>Arts & Letters</i>								
Remdial	0	0	0	0	0	0	2	110
Lower Division	183	10,305	181	10,817	200	11,897	184	11,000
Upper Division	217	5,106	242	5,936	221	5,836	219	5,950
Graduate	45	668	42	696	40	769	50	766
<i>College Total</i>	445	16,079	465	17,449	461	18,502	455	17,826
<i>% of Univ Total</i>	43.3%	32.7%	41.9%	33.1%	40.6%	32.3%	40.8%	31.0%
<i>Business</i>								
Lower Division	22	3,564	17	3,018	27	3,978	23	3,303
Upper Division	65	4,689	61	5,121	59	5,388	64	6,012
Graduate	4	285	4	342	4	246	4	300
<i>College Total</i>	91	8,538	82	8,481	90	9,612	91	9,615
<i>% of Univ Total</i>	8.9%	17.4%	7.4%	16.1%	7.9%	16.8%	8.2%	16.7%
<i>Education</i>								
Lower Division	33	1,646	43	2,229	50	2,090	45	2,007
Upper Division	37	1,961	53	2,143	56	2,839	52	3,224
Graduate	68	1,729	68	1,953	67	1,893	68	2,428
<i>College Total</i>	138	5,336	164	6,325	173	6,822	165	7,659
<i>% of Univ Total</i>	13.4%	10.9%	14.8%	12.0%	15.2%	11.9%	14.8%	13.3%
<i>Science</i>								
Lower Division	140	11,870	140	12,122	155	12,533	157	12,817
Upper Division	142	5,612	176	5,987	164	6,152	148	6,006
Graduate	37	529	41	479	31	562	38	657
<i>College Total</i>	319	18,011	357	18,588	350	19,247	343	19,480
<i>% of Univ Total</i>	31.0%	36.6%	32.2%	35.2%	30.8%	33.6%	30.7%	33.9%
<i>University College</i>								
Remedial	9	544	14	1,192	25	2,152	21	1,808
Lower Division	9	394	10	385	14	444	17	466
Upper Division	2	6	1	3	2	15	10	126
<i>College Total</i>	20	944	25	1,580	41	2,611	48	2,400
<i>% of Univ Total</i>	1.9%	1.9%	2.3%	3.0%	3.6%	4.6%	4.3%	4.2%
<i>Other</i>								
Lower Division	7	98	6	127	9	221	7	250
Upper Division	8	155	10	198	11	187	7	195
<i>Total</i>	15	253	16	325	20	408	14	445
<i>% of Univ Total</i>	1.5%	0.5%	1.4%	0.6%	1.8%	0.7%	1.3%	0.8%
<i>University Total</i>								
Remedial	9	544	14	1,192	25	2,152	23	1,918
Lower Division	394	27,877	397	28,698	455	31,163	433	29,843
Upper Division	471	17,529	543	19,388	513	20,417	500	21,513
Graduate	154	3,211	155	3,470	142	3,470	160	4,151
<i>Total</i>	1,028	49,161	1,109	52,748	1,135	57,202	1,116	57,425

Credit Hours Taught: Part-Time Faculty



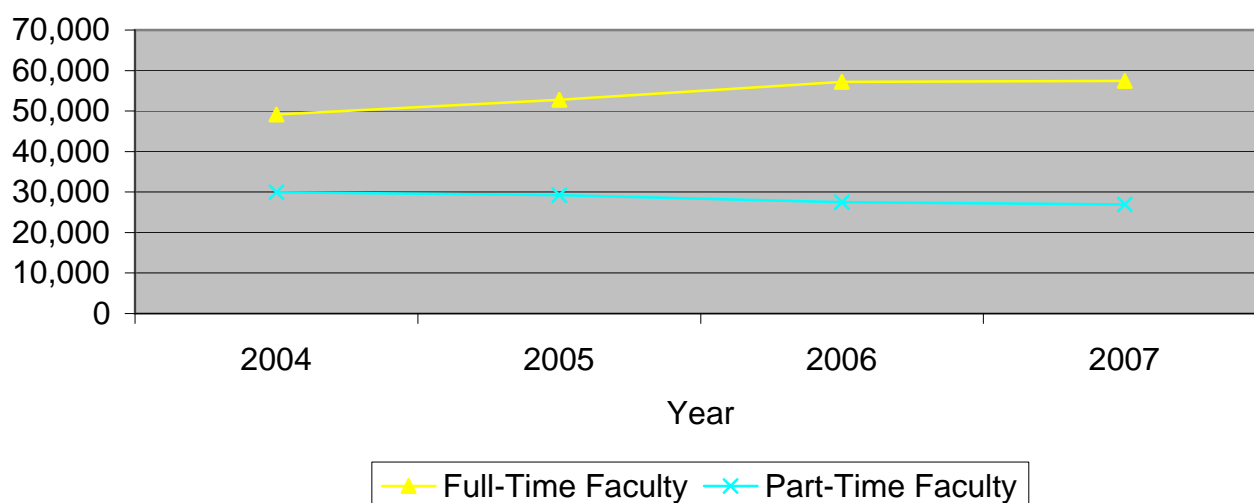
Credit Hours Taught by College and Level of Instruction								
Part-Time Faculty	Fall 2004		Fall 2005		Fall 2006		Fall 2007	
	# Sections	SCH	# Sections	SCH	# Sections	SCH	# Sections	SCH
<i>Arts & Letters</i>								
Remedial	3	176	3	290	5	342	2	96
Lower Division	152	10,004	172	10,675	187	11,656	164	9,930
Upper Division	85	2,812	75	2,639	106	2,908	82	2,779
Graduate	45	1,461	42	1,592	42	1,512	41	1,687
<i>College Total</i>	285	14,453	292	15,196	340	16,418	289	14,492
<i>% of Univ Total</i>	49.5%	48.2%	52.2%	52.0%	57.7%	59.6%	51.5%	53.9%
<i>Business</i>								
Lower Division	4	834	8	1,365	5	672	7	783
Upper Division	2	285	5	570	3	201	3	186
Graduate	0	0	0	0	0	0	0	0
<i>College Total</i>	6	1,119	13	1,935	8	873	10	969
<i>% of Univ Total</i>	1.0%	3.7%	2.3%	6.6%	1.4%	3.2%	1.8%	3.6%
<i>Education</i>								
Lower Division	54	2,279	60	2,222	58	2,151	54	2,141
Upper Division	24	908	20	948	12	536	15	785
Graduate	32	922	17	313	16	306	25	1,069
<i>College Total</i>	110	4,109	97	3,483	86	2,993	94	3,995
<i>% of Univ Total</i>	19.1%	13.7%	17.4%	11.9%	14.6%	10.9%	16.8%	14.9%
<i>Science</i>								
Lower Division	77	6,346	68	4,989	60	3,548	62	3,438
Upper Division	23	880	18	798	17	657	30	933
Graduate	3	30	1	3	1	30	5	96
<i>College Total</i>	103	7,256	87	5,790	78	4,235	97	4,467
<i>% of Univ Total</i>	17.9%	24.2%	15.6%	19.8%	13.2%	15.4%	17.3%	16.6%
<i>University College</i>								
Remedial	22	1,570	22	1,520	23	1,592	24	1,652
Lower Division	50	1,473	48	1,326	54	1,417	47	1,327
Upper Division	0	0	0	0	0	0	0	0
<i>College Total</i>	72	3,043	70	2,846	77	3,009	71	2,979
<i>% of Univ Total</i>	12.5%	10.2%	12.5%	9.7%	13.1%	10.9%	12.7%	11.1%
<i>Other</i>								
Lower Division	0	0	0	0	0	0	0	0
Upper Division	0	0	0	0	0	0	0	0
<i>Total</i>	0	0	0	0	0	0	0	0
<i>% of Univ Total</i>	0.0%	0.0%	0.0%	0.0%	0.0%	0.0%	0.0%	0.0%
<i>University Total</i>								
Remedial	25	1,746	25	1,810	28	1,934	26	1,748
Lower Division	337	20,936	356	20,577	364	19,444	334	17,619
Upper Division	134	4,885	118	4,955	138	4,302	130	4,683
Graduate	80	2,413	60	1,908	59	1,848	71	2,852
<i>Total</i>	576	29,980	559	29,250	589	27,528	561	26,902

Credit Hours Taught: All Faculty



Credit Hours Taught by College and Level of Instruction								
All Faculty	Fall 2004		Fall 2005		Fall 2006		Fall 2007	
	# Sections	SCH	# Sections	SCH	# Sections	SCH	# Sections	SCH
<i>Arts & Letters</i>								
Remedial	3	176	3	290	5	342	4	206
Lower Division	335	20,309	353	21,492	387	23,553	348	20,930
Upper Division	302	7,918	317	8,575	327	8,744	301	8,729
Graduate	90	2,129	84	2,288	82	2,281	91	2,453
<i>College Total</i>	730	30,532	757	32,645	801	34,920	744	32,318
<i>% of Univ Total</i>	45.5%	38.6%	45.4%	39.8%	46.5%	41.2%	44.4%	38.3%
<i>Business</i>								
Lower Division	26	4,398	25	4,383	32	4,650	30	4,086
Upper Division	67	4,974	66	5,691	62	5,589	67	6,198
Graduate	4	285	4	342	4	246	4	300
<i>College Total</i>	97	9,657	95	10,416	98	10,485	101	10,584
<i>% of Univ Total</i>	6.0%	12.2%	5.7%	12.7%	5.7%	12.4%	6.0%	12.6%
<i>Education</i>								
Lower Division	87	3,925	103	4,451	108	4,241	99	4,148
Upper Division	61	2,869	73	3,091	68	3,375	67	4,009
Graduate	100	2,651	85	2,266	83	2,199	93	3,497
<i>College Total</i>	248	9,445	261	9,808	259	9,815	259	11,654
<i>% of Univ Total</i>	15.5%	11.9%	15.6%	12.0%	15.0%	11.6%	15.4%	13.8%
<i>Science</i>								
Lower Division	217	18,216	208	17,111	215	16,081	219	16,255
Upper Division	165	6,492	194	6,785	181	6,809	178	6,939
Graduate	40	559	42	482	32	592	43	753
<i>College Total</i>	422	25,267	444	24,378	428	23,482	440	23,947
<i>% of Univ Total</i>	26.3%	31.9%	26.6%	29.7%	24.8%	27.7%	26.2%	28.4%
<i>University College</i>								
Remedial	31	2,114	36	2,712	48	3,744	45	3,460
Lower Division	59	1,867	58	1,711	68	1,861	64	1,793
Upper Division	2	6	1	3	2	15	10	126
<i>College Total</i>	92	3,987	95	4,426	118	5,620	119	5,379
<i>% of Univ Total</i>	5.7%	5.0%	5.7%	5.4%	6.8%	6.6%	7.1%	6.4%
<i>Other</i>								
Lower Division	7	98	6	127	9	221	7	250
Upper Division	8	155	10	198	11	187	7	195
<i>Total</i>	15	253	16	325	20	408	14	445
<i>% of Univ Total</i>	0.9%	0.3%	1.0%	0.4%	1.2%	0.5%	0.8%	0.5%
<i>University Total</i>								
Remedial	34	2,290	39	3,002	53	4,086	49	3,666
Lower Division	731	48,813	753	49,275	819	50,607	767	47,462
Upper Division	605	22,414	661	24,343	651	24,719	630	26,196
Graduate	234	5,624	215	5,378	201	5,318	231	7,003
<i>Total</i>	1,604	79,141	1,668	81,998	1,724	84,730	1,677	84,327

Credit Hours Taught by Faculty Status



Credit Hours Taught by College and Faculty Status								
	Fall 2004		Fall 2005		Fall 2006		Fall 2007	
	# Sections	SCH	# Sections	SCH	# Sections	SCH	# Sections	SCH
<i>Arts & Letters</i>								
Full-Time Faculty	445	16,079	465	17,449	461	18,502	455	17,826
Part-Time Faculty	285	14,453	292	15,196	340	16,418	289	14,492
<i>College Total</i>	730	30,532	757	32,645	801	34,920	744	32,318
<i>% of Univ Total</i>	45.5%	38.6%	45.4%	39.8%	46.5%	41.2%	44.4%	38.3%
<i>Business</i>								
Full-Time Faculty	91	8,538	82	8,481	90	9,612	91	9,615
Part-Time Faculty	6	1,119	13	1,935	8	873	10	969
<i>College Total</i>	97	9,657	95	10,416	98	10,485	101	10,584
<i>% of Univ Total</i>	6.0%	12.2%	5.7%	12.7%	5.7%	12.4%	6.0%	12.6%
<i>Education</i>								
Full-Time Faculty	138	5,336	164	6,325	173	6,822	165	7,659
Part-Time Faculty	110	4,109	97	3,483	86	2,993	94	3,995
<i>College Total</i>	248	9,445	261	9,808	259	9,815	259	11,654
<i>% of Univ Total</i>	15.5%	11.9%	15.6%	12.0%	15.0%	11.6%	15.4%	13.8%
<i>Science</i>								
Full-Time Faculty	319	18,011	357	18,588	350	19,247	343	19,480
Part-Time Faculty	103	7,256	87	5,790	78	4,235	97	4,467
<i>College Total</i>	422	25,267	444	24,378	428	23,482	440	23,947
<i>% of Univ Total</i>	26.3%	31.9%	26.6%	29.7%	24.8%	27.7%	26.2%	28.4%
<i>University College</i>								
Full-Time Faculty	20	944	25	1,580	41	2,611	48	2,400
Part-Time Faculty	72	3,043	70	2,846	77	3,009	71	2,979
<i>College Total</i>	92	3,987	95	4,426	118	5,620	119	5,379
<i>% of Univ Total</i>	5.7%	5.0%	5.7%	5.4%	6.8%	6.6%	7.1%	6.4%
<i>Other</i>								
Full-Time Faculty	15	253	16	325	20	408	14	445
Part-Time Faculty	0	0	0	0	0	0	0	0
<i>Total</i>	15	253	16	325	20	408	14	445
<i>% of Univ Total</i>	0.9%	0.3%	1.0%	0.4%	1.2%	0.5%	0.8%	0.5%
<i>University Total</i>								
Full-Time Faculty	1,028	49,161	1,109	52,748	1,135	57,202	1,116	57,425
Part-Time Faculty	576	29,980	559	29,250	589	27,528	561	26,902
<i>Total</i>	1,604	79,141	1,668	81,998	1,724	84,730	1,677	84,327