



COLUMBUS STATE
UNIVERSITY

NOTES *to* NERDS

The official newsletter of the Math Collaborative



Invitation to Engaging Professional Learning: Register Now!

IN THIS ISSUE:

**DIRECTOR'S NOTES:
A VALENTINE'S POEM**

**UPCOMING
PROFESSIONAL
LEARNING**

COOL TEACHER STUFF

**INVITATION TO THE ANNUAL
MATH MASTERS
COMPETITION**

CONTACT US



THE MATH COLLABORATIVE MISSION:

The CRMC's mission is to improve math education for all students in our area by developing teacher leaders through deepening their content knowledge, developing best practices, and using available resources to improve student outcomes and experiences.

TO DO THIS, WE MUST:

Provide quality teacher growth experiences through continuous collaboration - in and out of the classrooms - with a focus on teachers' needs in support of student growth.



DIRECTOR'S NOTES

CONTRIBUTED BY PETER ANDERSON, CPMC DIRECTOR

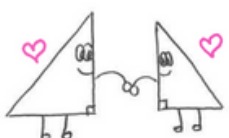
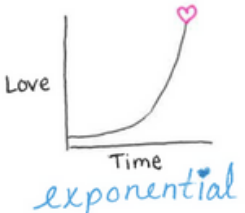
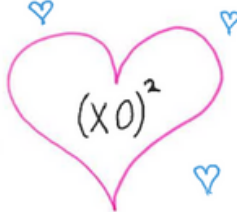

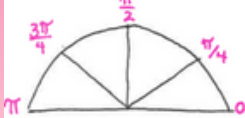


Nerds,

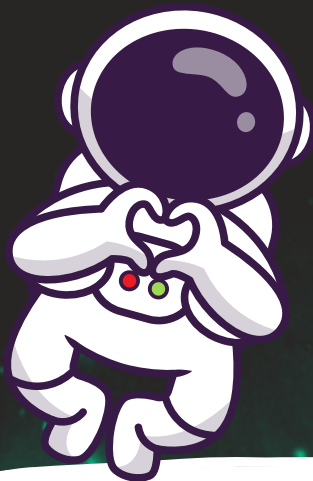
It can be hard to get a Valentine's card right,
but these mathematical cards are an awesome sight!
Use them for students or like-minded nerds.
They already have pictures - and all the right words!
Have fun with these.
Give with a light heart,
and 'cause they are all Mathy,
folks will think you are pretty darn smart!

Click Here for
your special
Math Nerds
Valentine
card.

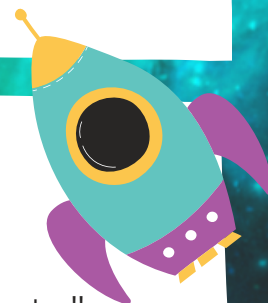
Happy Valentine's Day in the happiest of Math Ways!

Pete

<p>Our Love is so right</p>  <p>To: _____ From: _____</p>	<p>my Love for you is</p>  <p>To: _____ From: _____</p>	<p>Math. Tangent. Cosine. Sine.</p> <p>3.14159...</p> <p>Will you be my Valentine?</p> <p>To: _____ From: _____</p>	<p>(X) love</p> <p>The power of Love</p> <p>To: _____ From: _____</p>
 <p>To: _____ From: _____</p>	<p>$\frac{\text{you}}{\text{heart}} + \frac{\text{me}}{\text{heart}} = \frac{\text{us}}{\text{heart}}$</p> <p>you are my common denominator</p> <p>To: _____ From: _____</p>	<p>my Love for you is</p>  <p>To: _____ From: _____</p>	<p>You make my heart feel like</p> <p>$\sin(\frac{1}{x})$</p> <p>as x approaches 0.</p> <p>To: _____ From: _____</p>
<p>You are my sweetie π</p>  <p>To: _____ From: _____</p>	<p>Parallel lines never meet</p>  <p>but we should</p> <p>To: _____ From: _____</p>	<p>Will you be</p>  <p>my Pascalentine!</p> <p>To: _____ From: _____</p>	<p>You are my</p> <p>$f(x) = x^2 - 3x + C$</p> <p>$x = 3$</p> <p>♥ ♥ ♥ ♥</p> <p>To: _____ From: _____</p>



UPCOMING PROFESSIONAL LEARNING MISSIONS



GRADES 3-5

Who: CRMC Resource Specialist, Karen Hensen

What: From Calculator to Thinkers: Exploring Problem Solving with Geometry!!

When: Wednesday, February 28, 2024

Where: Frank Brown Hall, Classroom 1010

GRADES 6-8

Who: CRMC Resource Specialist, Hope Phillips

What: Just-in-Time for the New GA Math Curriculum: Together Apart

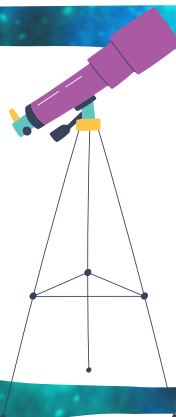
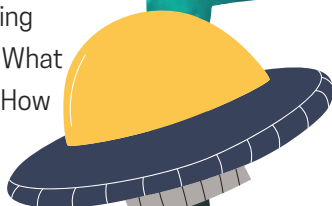
When: Thursday, February 29, 2024

Where: Frank Brown Hall, Classroom 1010

MARCH MISSION

For Teachers of
Grades 9-12

"How Do We Teach Using
Math Modeling Tasks: What
Have We Learned and How
Do We Get Better?"



REGISTER NOW!

To accept this mission, click here to enter
[our the CSU Libcal portal for all Math
Collaborative Opportunities](#)



Questions?
Contact the CRMC
anderson_peter2@columbusstate.edu or
706.565.1475
www.columbusstate.edu/CRMC

COOL TEACHER STUFF

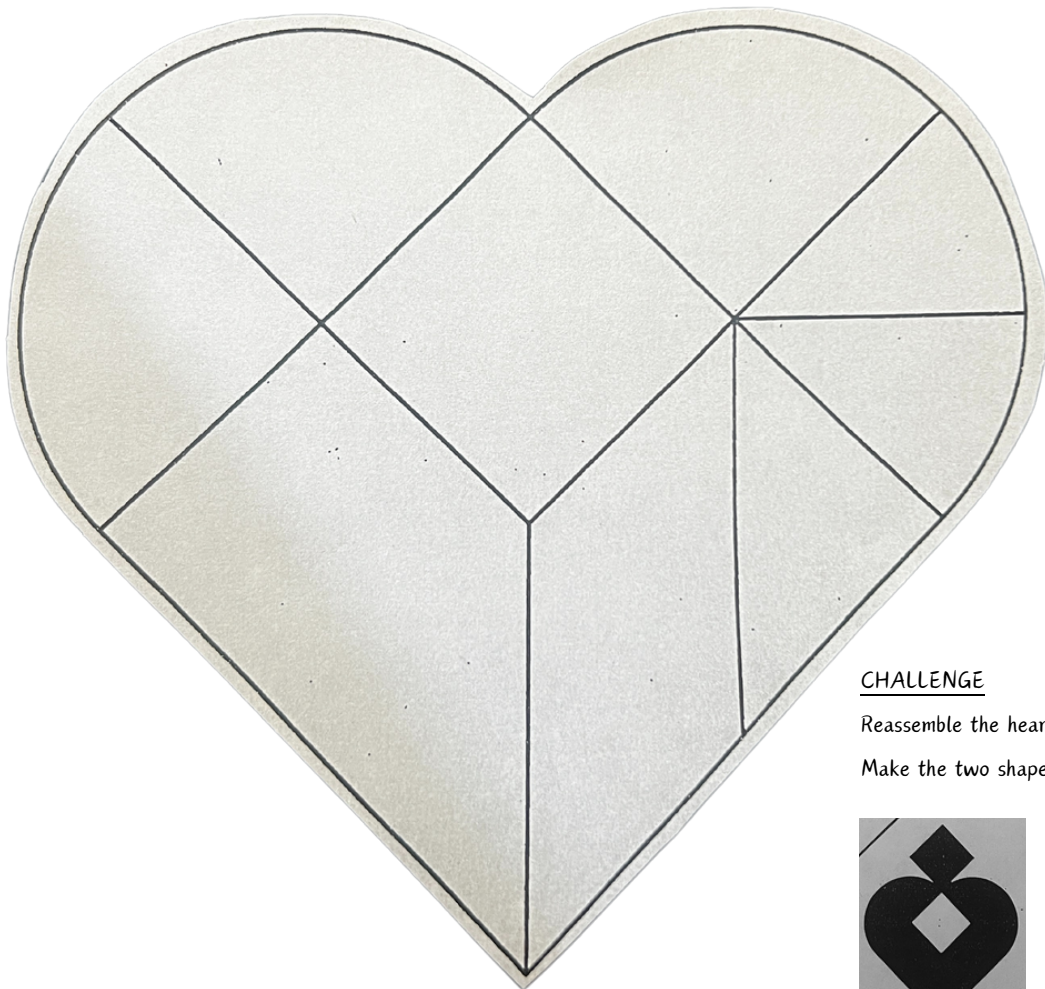
CONTRIBUTED BY RUBY TUCKER, DONOR AND FRIEND OF THE CRAC



The Heart-Breaking Puzzle



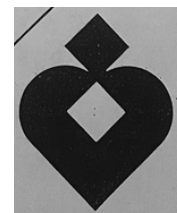
Here's how it works: Carefully cut out the pieces of the heart puzzle. Use all nine pieces to make as many interesting shapes as you can. The pieces must be placed edge-to-edge and can't overlap! Make a record of your shapes by drawing their outlines on a separate piece of paper.



CHALLENGE

Reassemble the heart.

Make the two shapes shown here:



COOL TEACHER STUFF

CONTRIBUTED BY KAREN HENSEN
CRMC RESOURCE SPECIALIST

MULTIPLICATION

Simplified

"LEARNING THE MULTIPLICATION TABLE IS ONE OF THE BIGGEST CHALLENGES THAT CHILDREN MUST OVERCOME USING ROTE LEARNING." DROR DOTAN

Ask any teacher (5th grade and above) and they will lament the need for students to know their basic math facts through 12. It's a necessary foundational skill that is critical in a child's academic development. Learning multiplication is more than memorization and it has its advantages that go beyond the classroom.

Multiplication is a primary tool for many forms of math such as algebra, calculus, equations, and more. By the final year of elementary school, understanding and the ability to use multiplication facts up to and including 12 enables children to confidently and skillfully tackle more complex mathematical subjects.



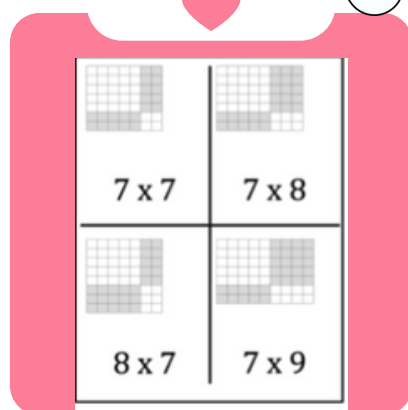
I love this quote from the website twoboysandadad.com:

"Fluency does not mean automatic recall. Fluency is many faceted. If you can't remember, what strategy can you use to quickly figure it out? So, fluency is a mix of automaticity, recall and use of strategies."

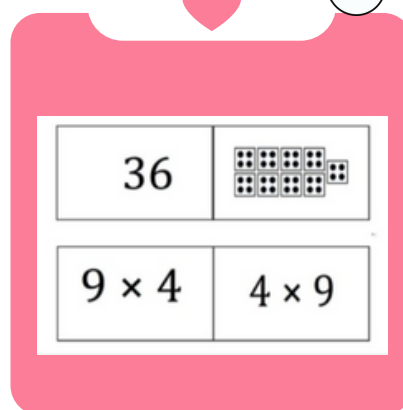
Support your students' future success by helping them build this critical math foundation and improve their multiplication fluency with these FREE quality downloadable resources:

Multiplication

Array Cards

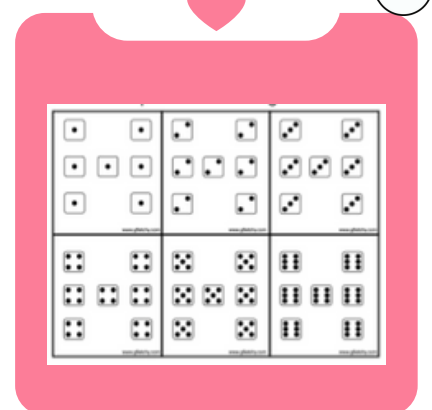


Youcubed



Multiplication

Subitizing Cards





YAY!

MATH MASTERS

ANNUAL COMPETITION 2024



MARCH 16, 2024

THE ANNUAL MATH MASTERS COMPETITION: A MIDDLE-GRADES MATH CHALLENGE THE CRMC, THE DEPARTMENT OF TEACHER EDUCATION, AND THE DEPARTMENT OF MATHEMATICS HAVE COME TOGETHER TO CREATE A STIMULATING MATH COMPETITION TARGETING MIDDLE-GRADE STUDENTS. THIS COMPETITION AIMS TO CHALLENGE AND SUPPORT STUDENTS' INTELLECTUAL GROWTH BY PROVIDING TASK-BASED MATH PROBLEMS THAT REQUIRE TEAM COLLABORATION TO SOLVE.

WHY PARTICIPATE?

Naturally, it's all about snagging a shiny trophy...but the real *crème de la crème* is testing yourself with difficult challenges, sharing with teammates, and learning from others!



For more information and to register,
scan the QR or visit our Event Calendar: <https://columbusstate.libcal.com/event/11253389>



Click here to read more about our website:

[Columbus Regional
Mathematics Collaborative
Columbus State University](#)



Keep the
Math Magic Going!
Pledge your Support!

Click the icons below to follow us on social media:



Columbus Regional Mathematics Collaborative
Frank Brown Hall
1127 Broadway
Columbus, Georgia 31901

Mailing Address: 4225 University Avenue, Columbus, Georgia 31907