



Unaccompanied

“Art is the antidote that can call us back from the edge of numbness, restoring the ability to feel for another.”

Barbara Kingsolver, High Tide in Tucson

February 7 – May 12, 2023
The Bo Bartlett Center

3 Preface

4 Kate Capshaw

11 Unaccompanied

55 Studies

66 Exhibition Checklist

71 Joshua-Michèle Ross

72 Collaborating Organizations

74 The Bo Bartlett Center



Unaccompanied is a project that began in late 2016. It is an artistic outgrowth of Capshaw's inquiry into the invisibility of youth experiencing homelessness. In collaboration with community youth centers across the United States, she painted her first portraits in Los Angeles followed by cities including San Francisco, Fargo, Porcupine, Minneapolis, Chicago, St. Louis, and New York City. Working closely with sound artist Joshua-Michéle Ross, Capshaw invited participants from the portraits and the youth centers, so their voices would be included in this work.

"Each year, an estimated 4.2 million youth and young adults experience some form of homelessness, of which 700,000 are unaccompanied minors, meaning they are not part of a family or accompanied by a parent or guardian."

National Conference of State Legislatures (2021, March 19).
Summary youth homelessness overview. Retrieved February 1, 2023
www.ncsl.org/human-services/youth-homelessness-overview

Kate Capshaw

4 Kate Capshaw (b. 1953, Fort Worth, Texas) was raised in Ferguson, Missouri. She attended the University of Missouri-Columbia receiving a B.A. in Education and a Master of Education in Special Education in 1976, after which she taught for two years. She set up primary and secondary Individualized Education Programs (IEPs) for students with learning differences in the rural consolidated district of Southern Boone County.

In the years that followed, Capshaw moved to New York City and in 2009 she began studying—drawing, painting, and portraiture. In 2016, she saw a way to use portraiture to bring public awareness to youth homelessness and other issues.

In March 2019, three paintings from the work that began in Los Angeles were selected as finalists in the Smithsonian National Portrait Gallery's prestigious juried triennial: the Outwin Boochever Portrait Competition. Following their selection, the portraits debuted in the exhibition *The Outwin 2019: American Portraiture Today*. The national tour opened on October 29, 2019, in Washington, D.C. It concluded in St. Louis in January 2022.

Unaccompanied is Capshaw's first solo exhibition.





This is how you see me the space in which to place me

This is how to place you in the space in which to see

The space in me you see

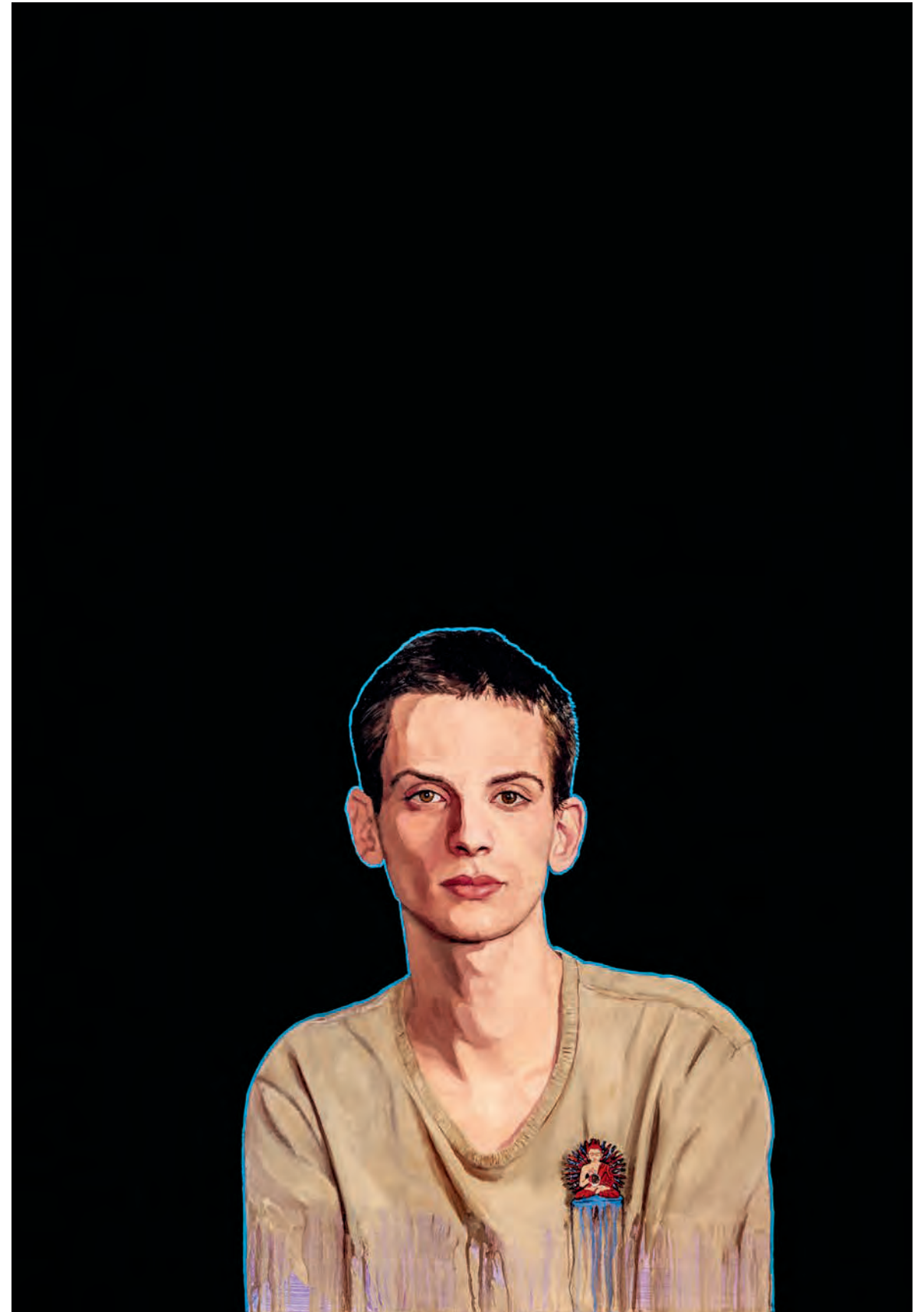
is this place

see how you place me in you

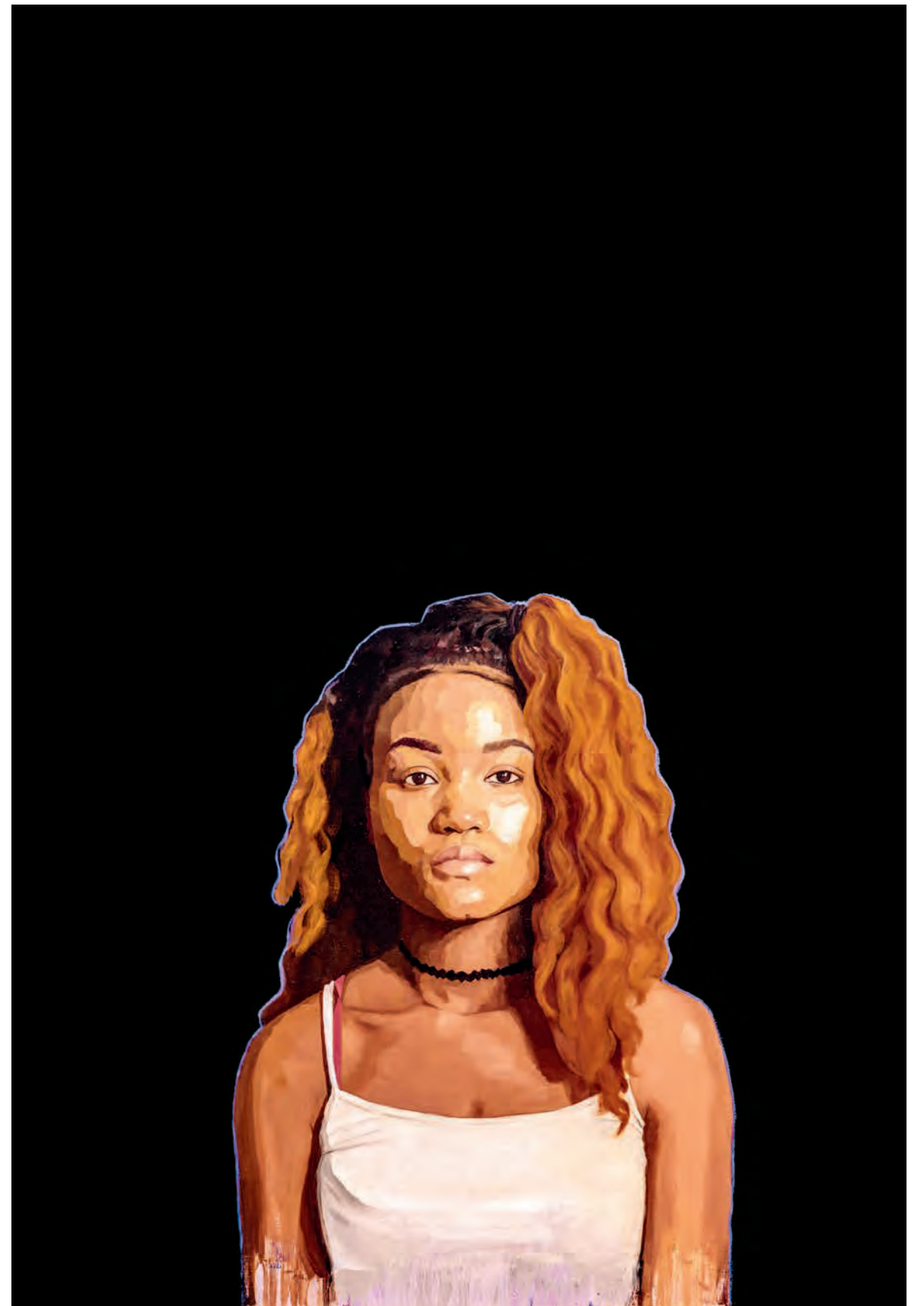
To see this space

Unaccompanied

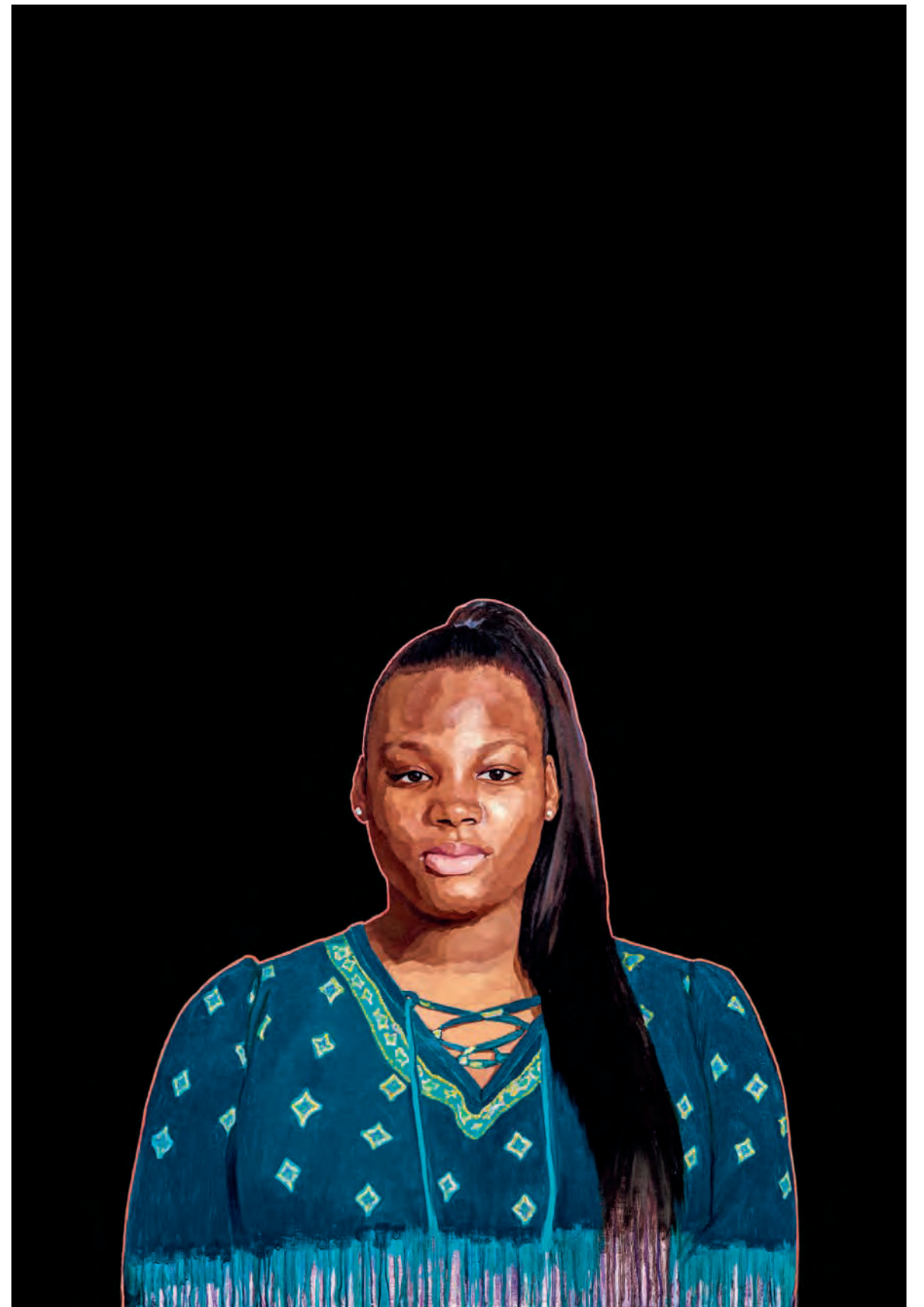
Anubis, 2021



Telma, 2020



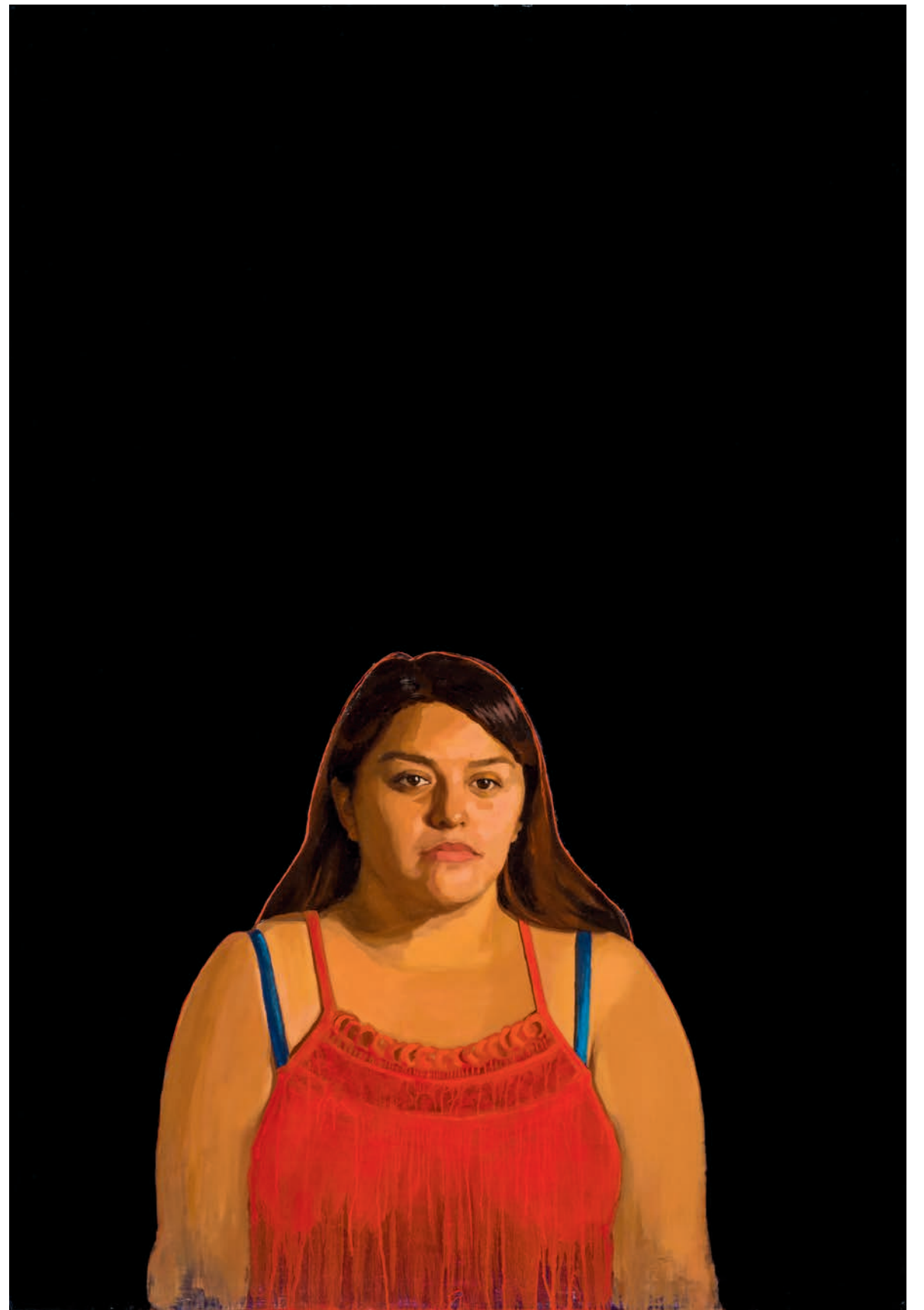
Lacherise, 2022



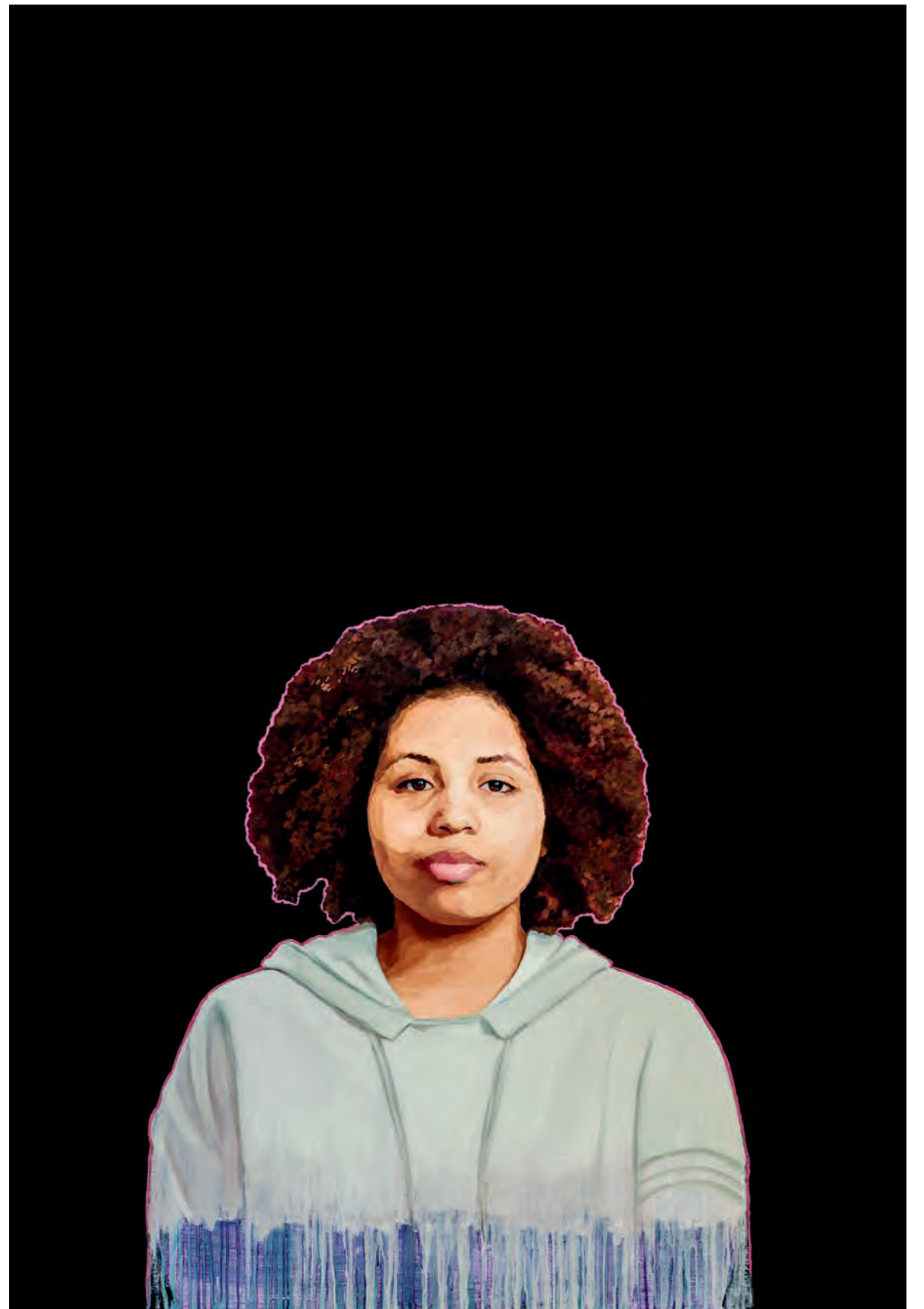
Jacob, 2017



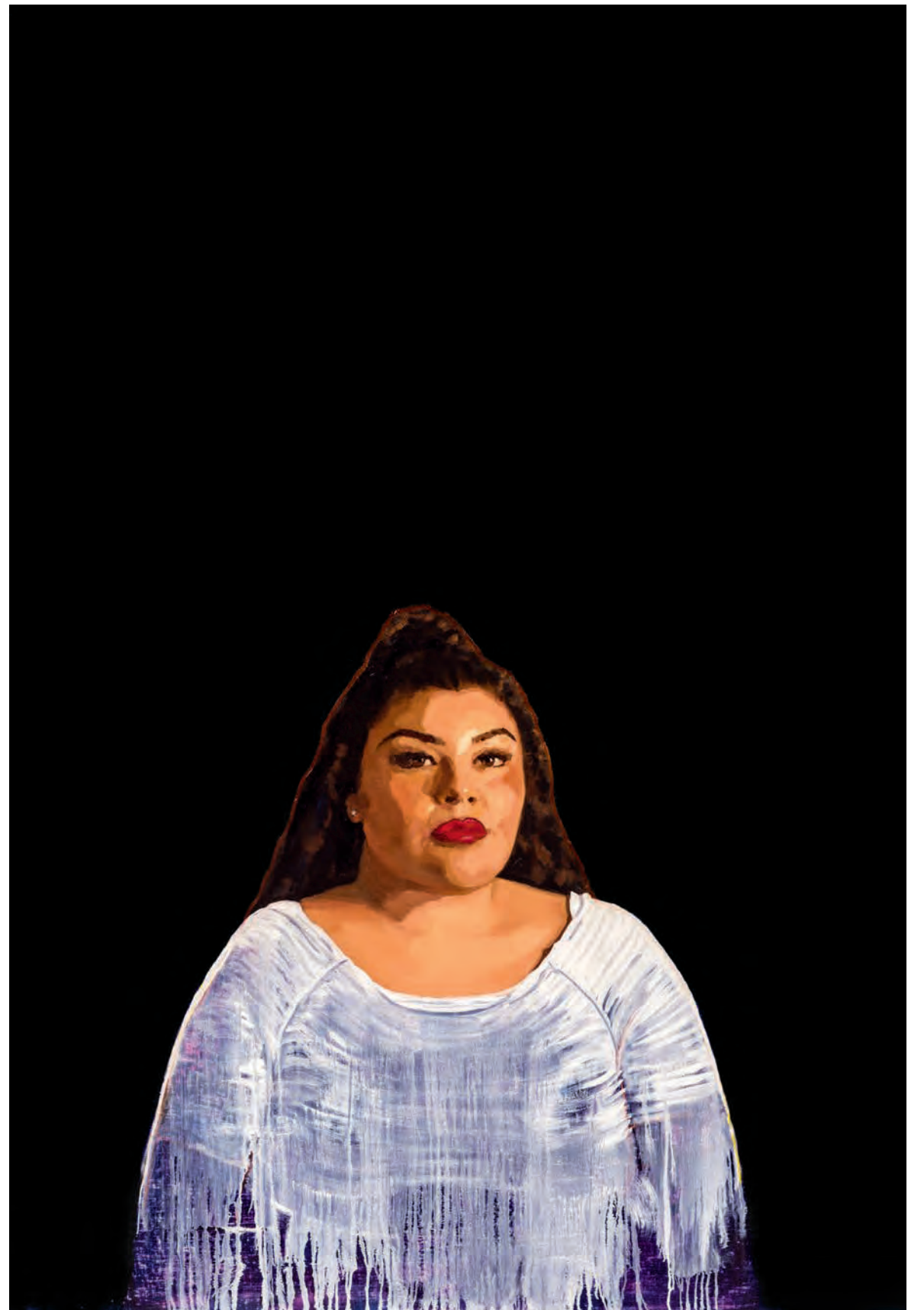
Celestina, 2017



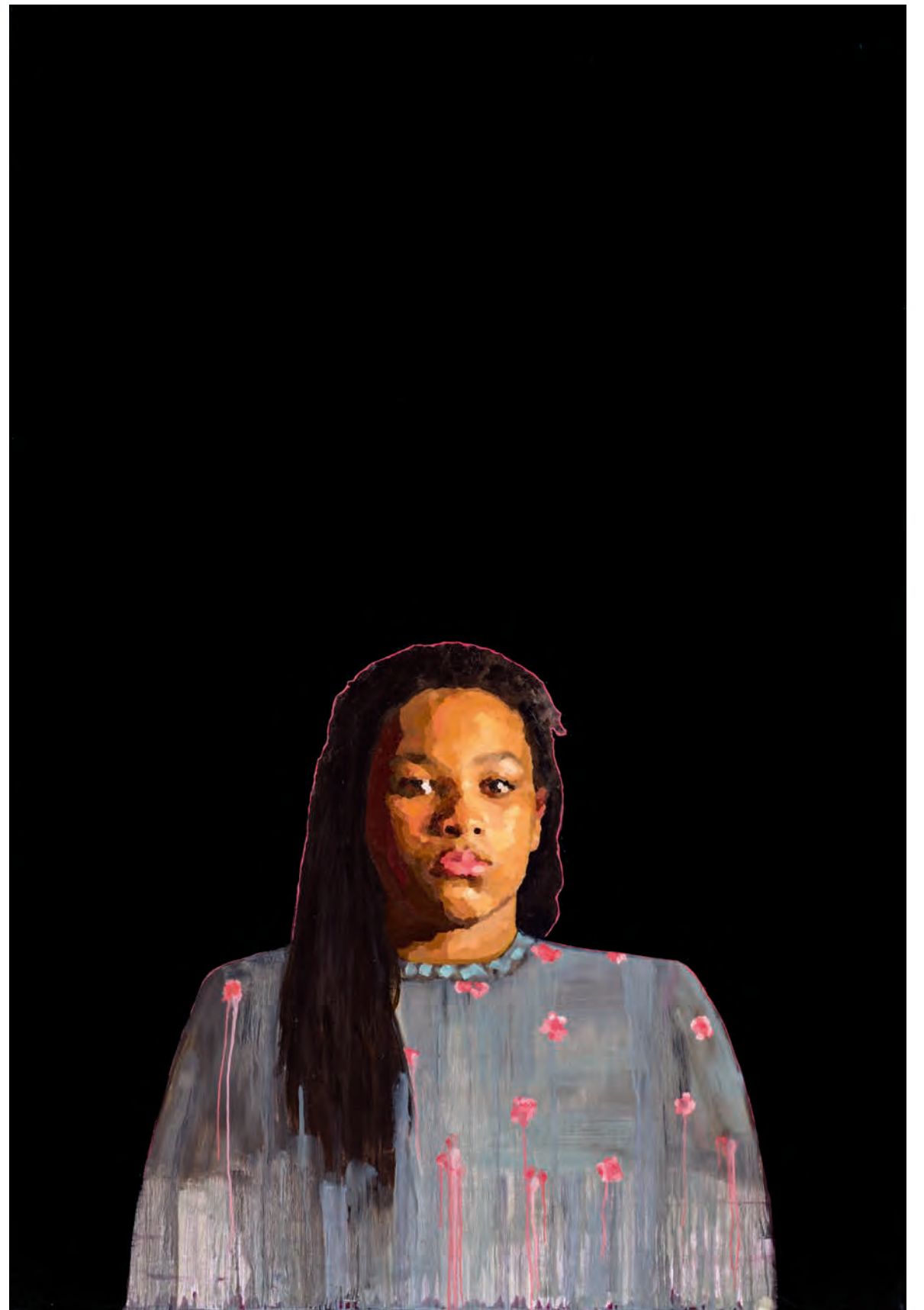
Macey, 2022



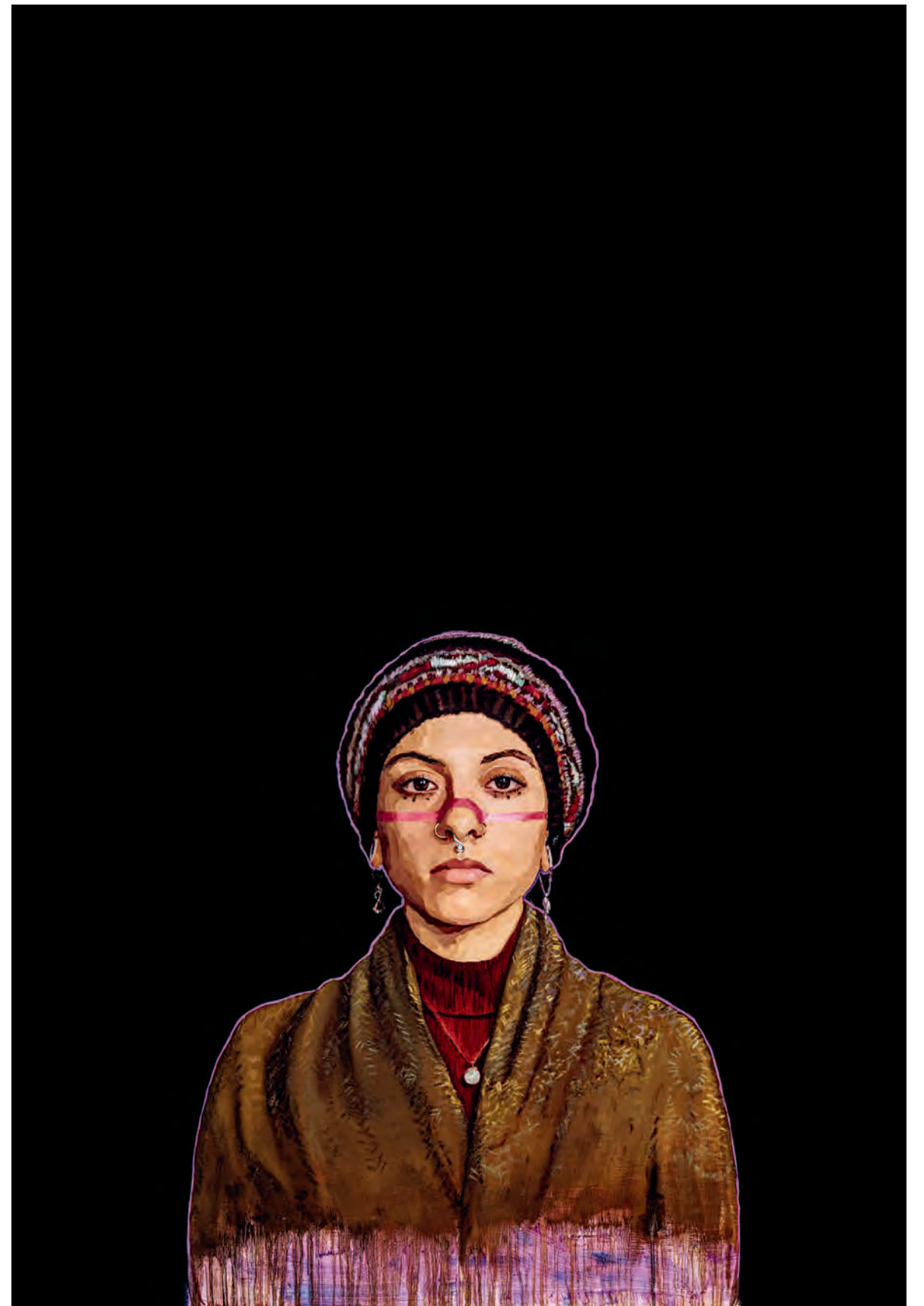
Lila, 2017



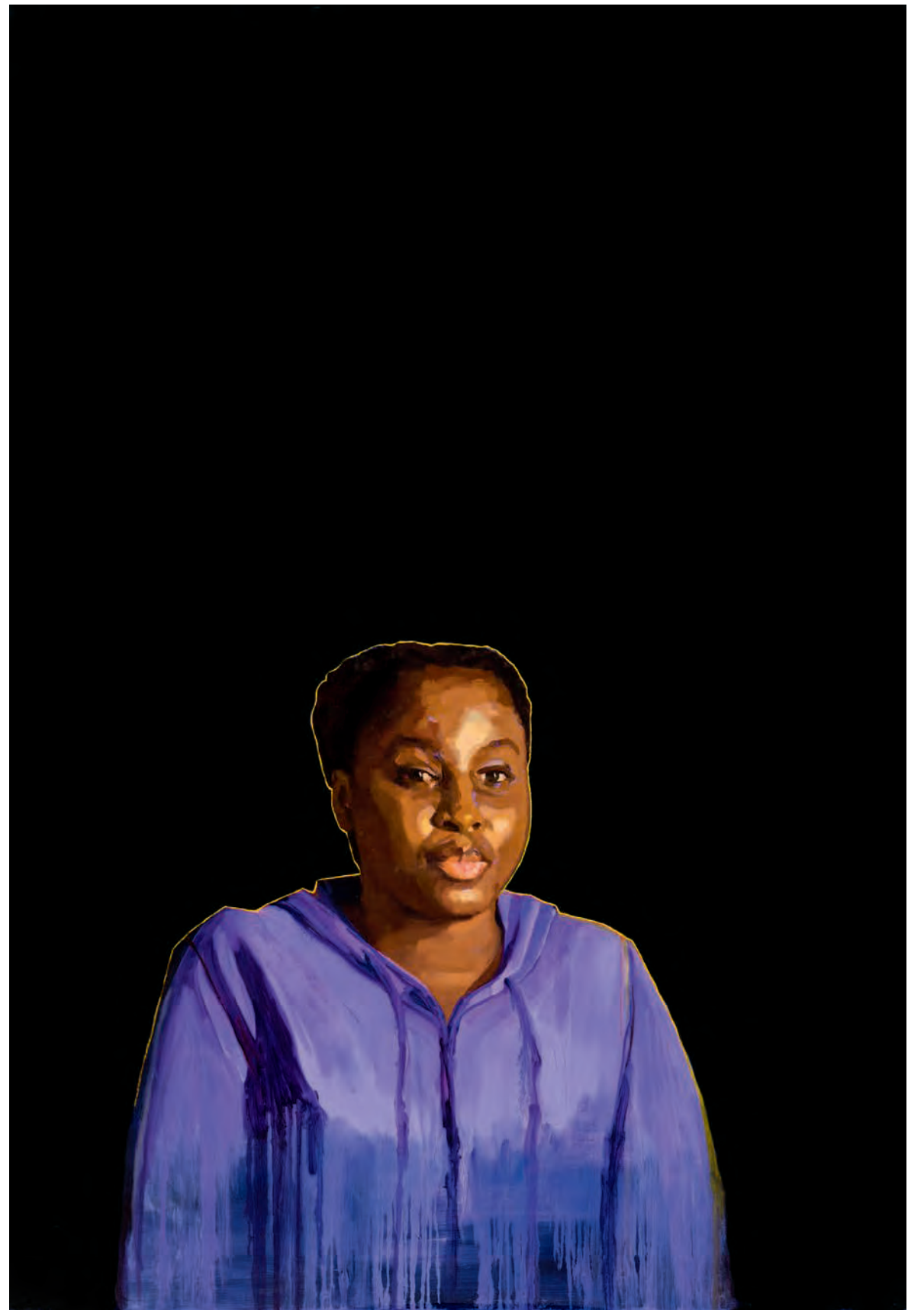
Summer, 2017



Kourtney, 2019



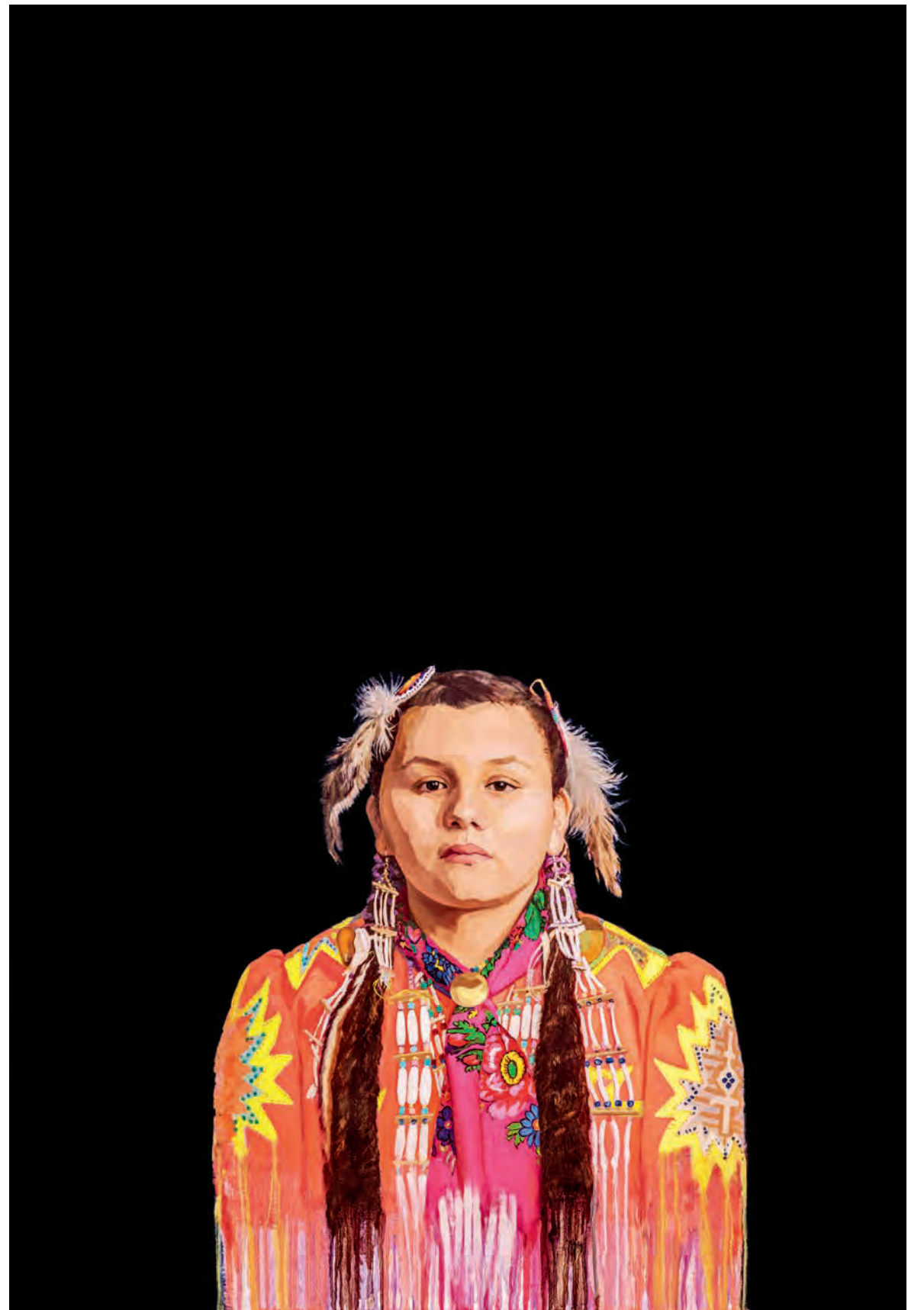
Ana, 2017



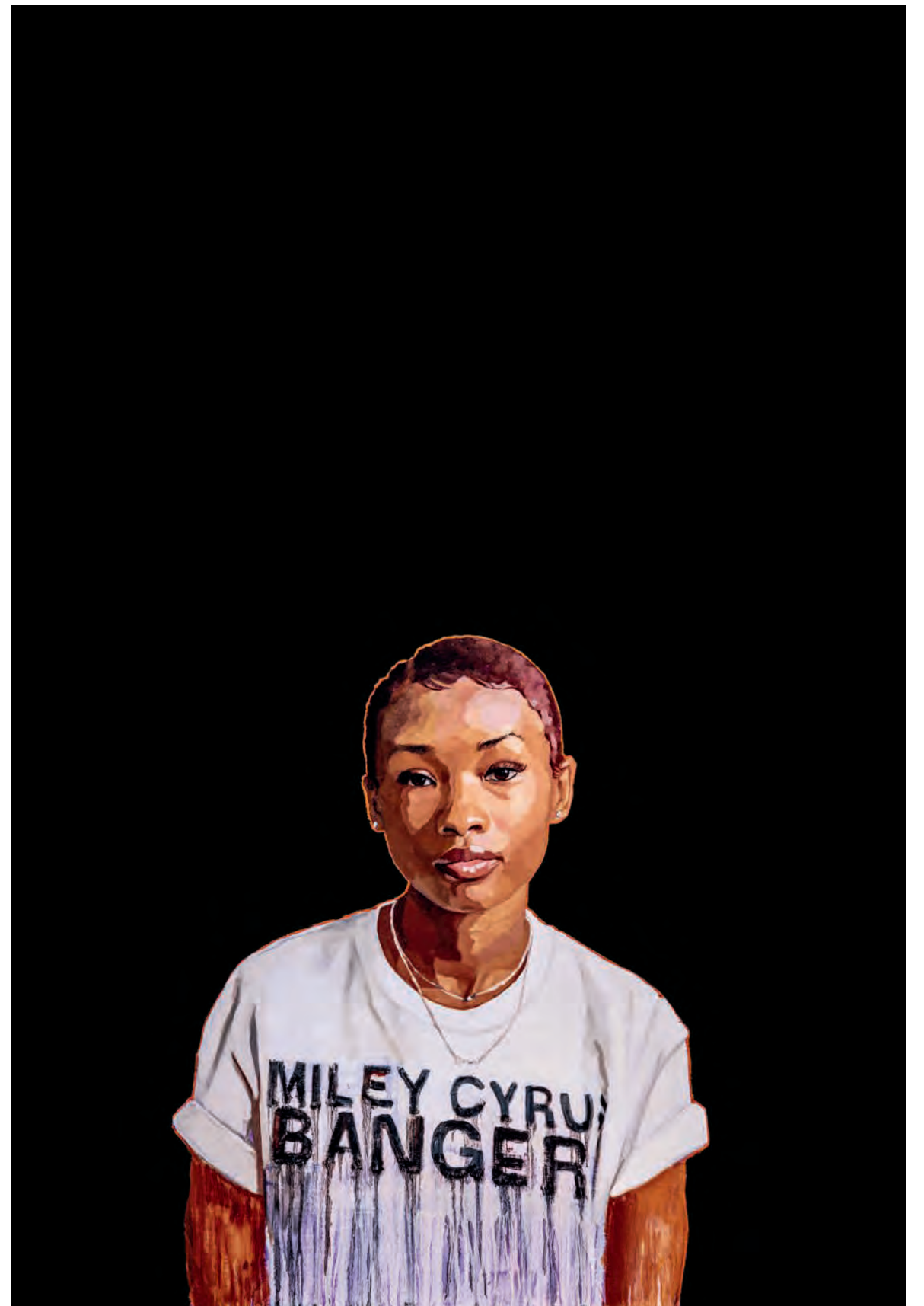
Shae, 2021



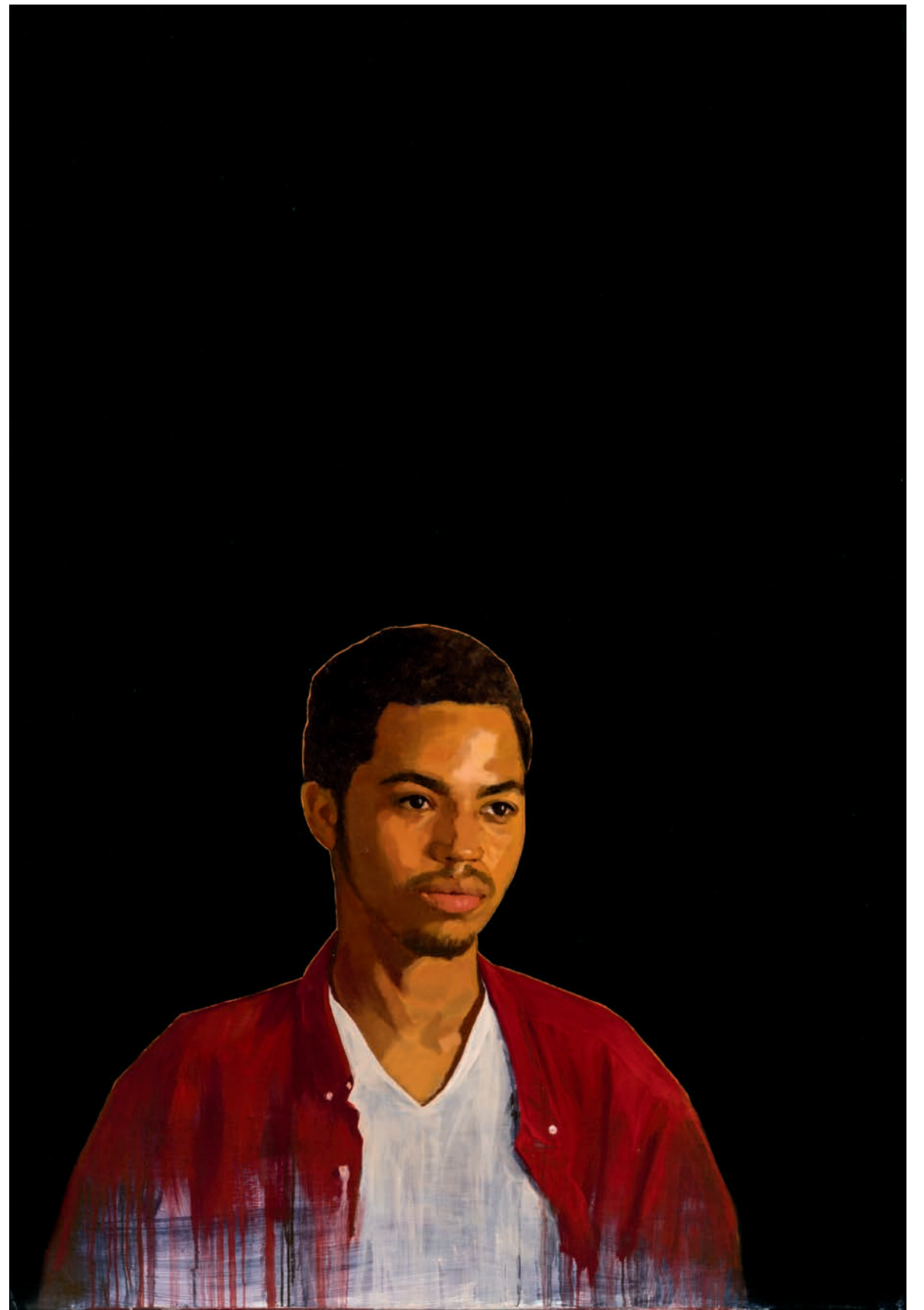
Amanda, 2021



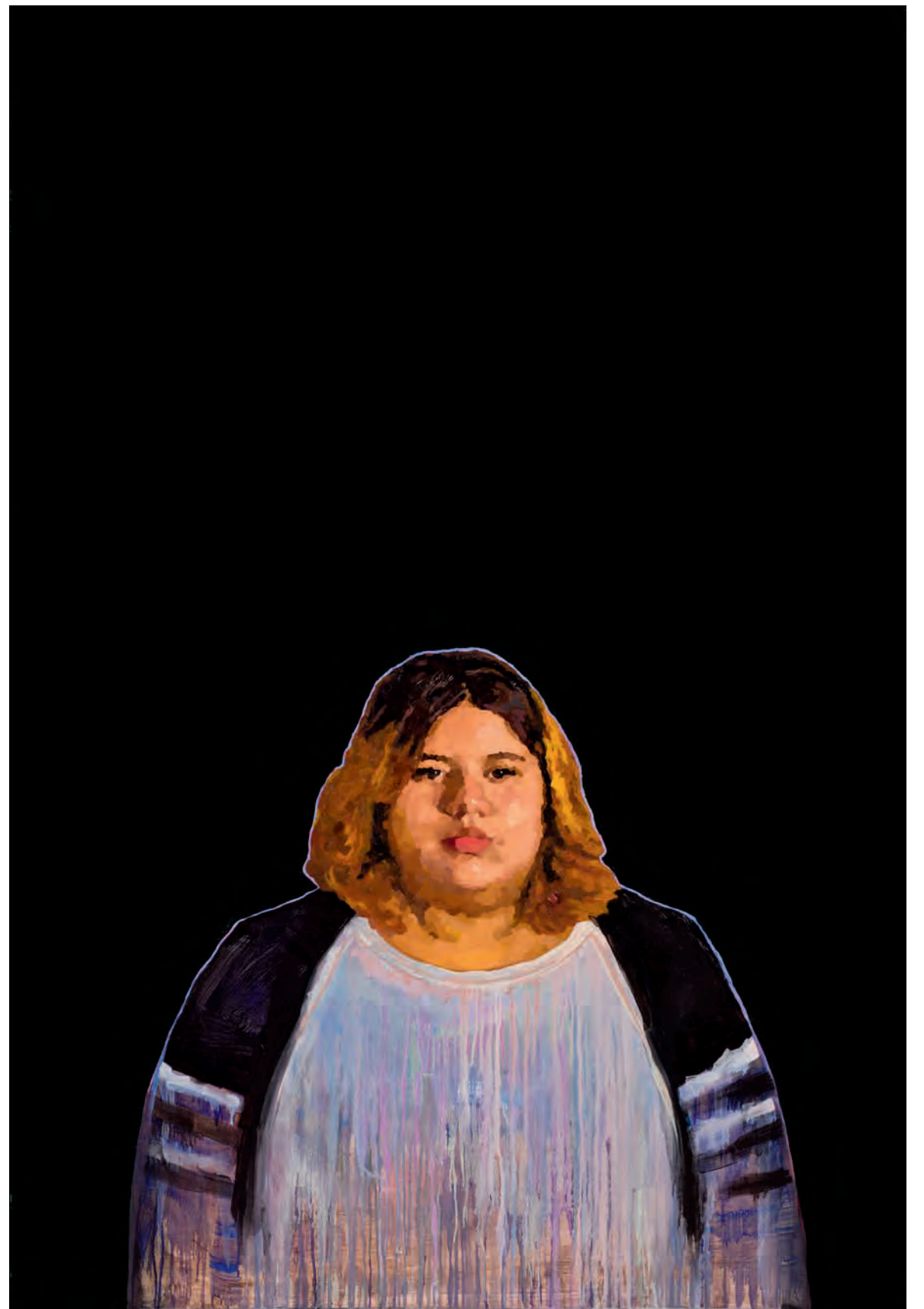
Dashone, 2020



Adrian, 2017



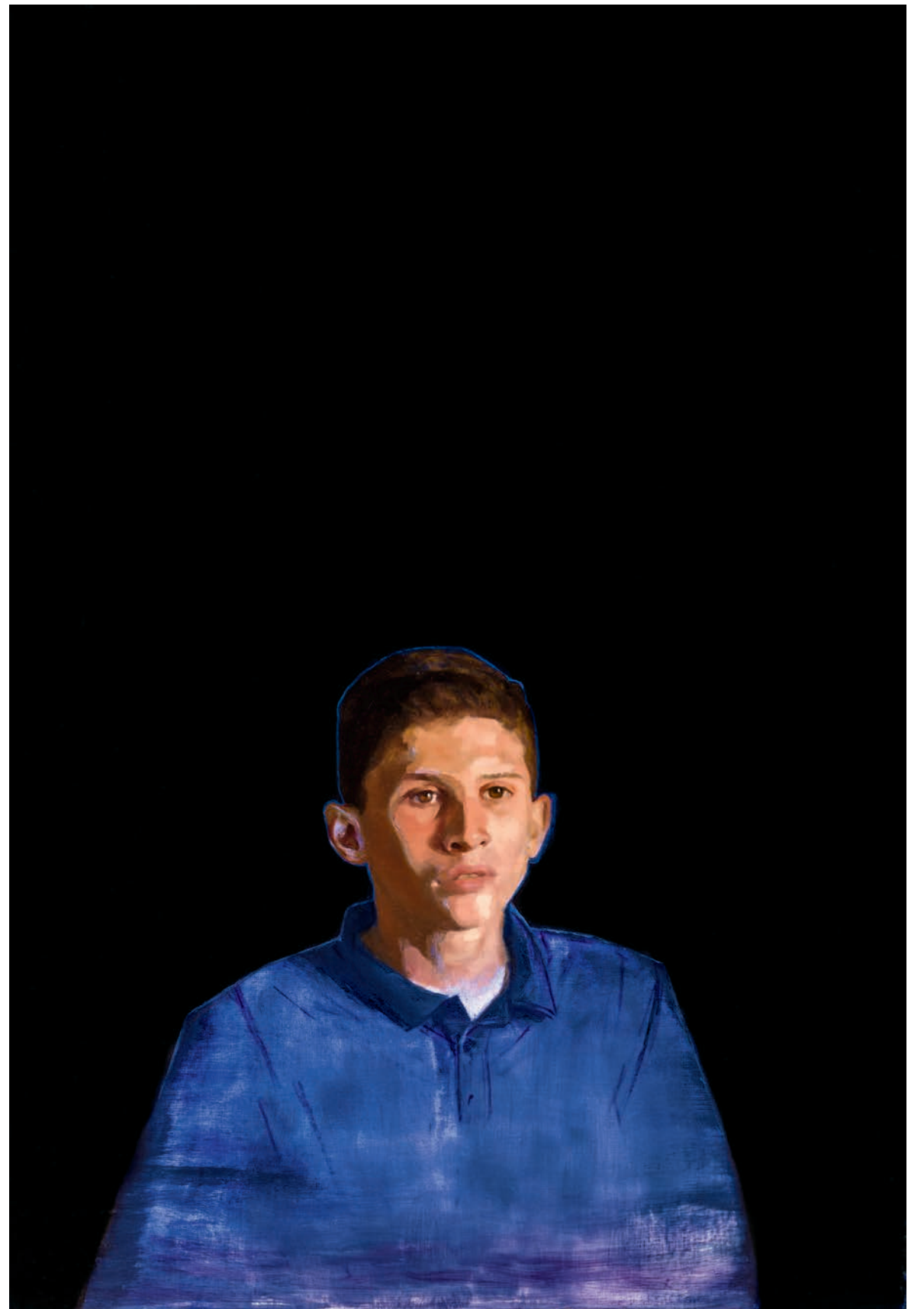
Lizeth, 2017



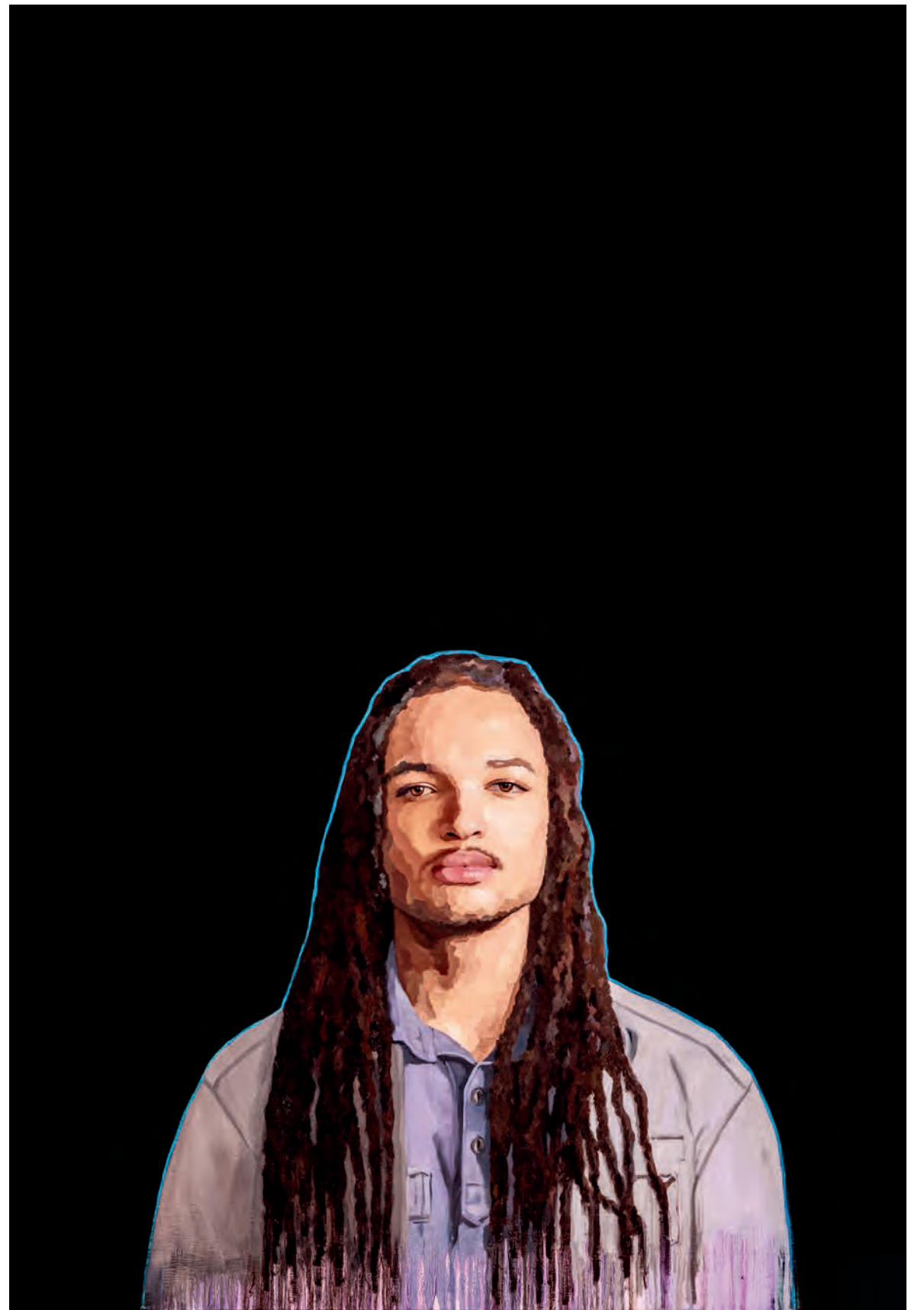
Landon, 2022



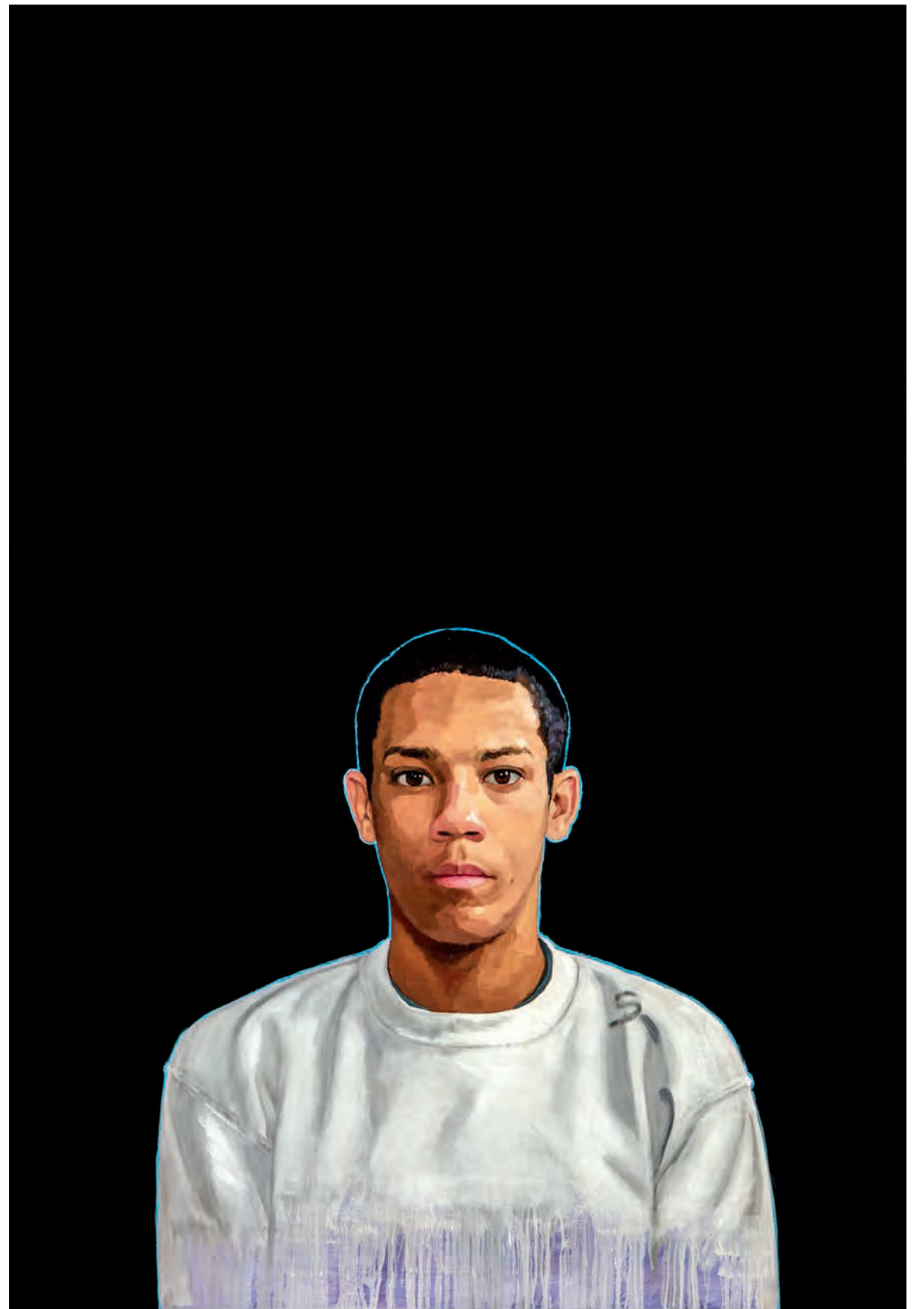
Andy, 2017



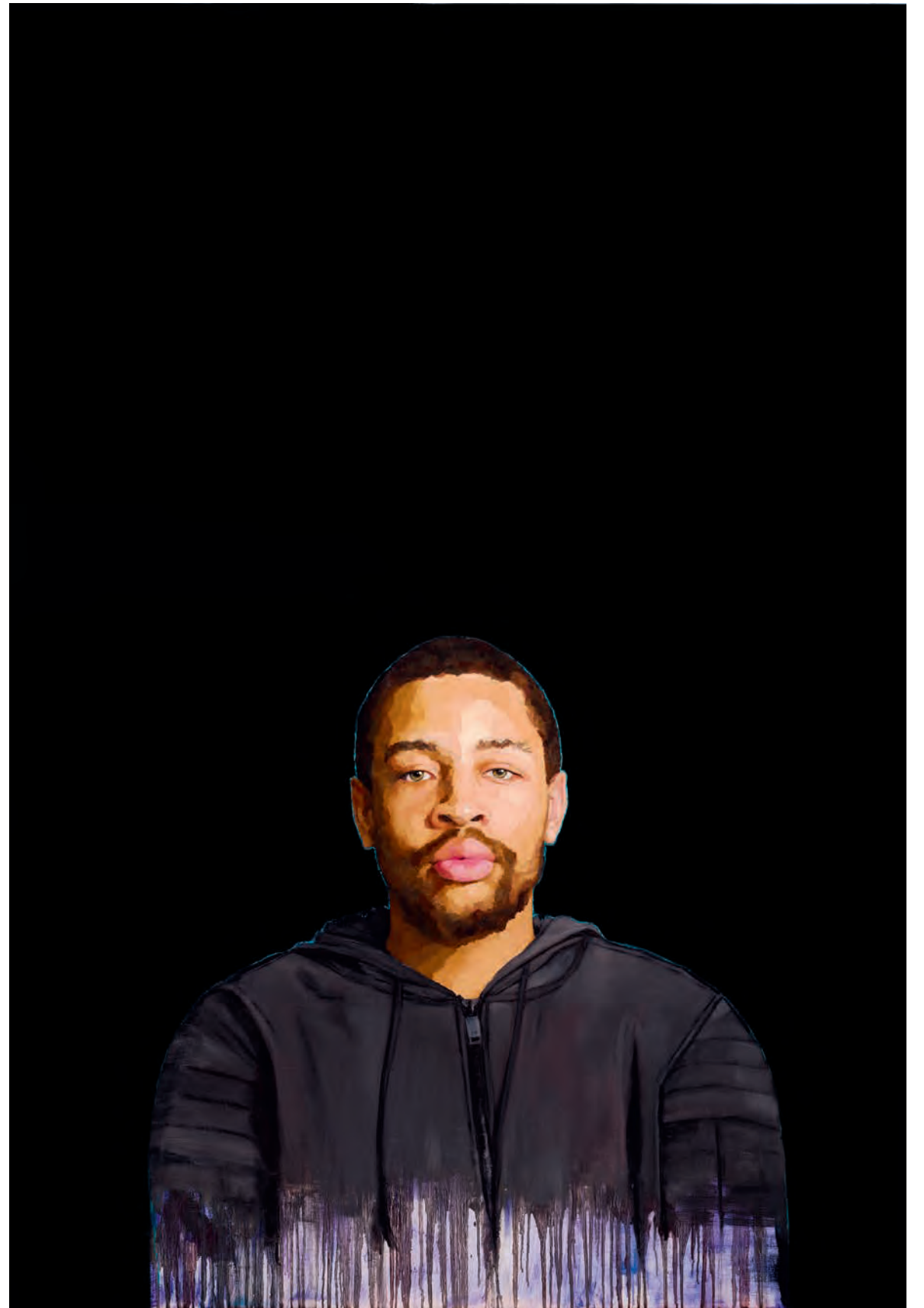
Kevin, 2020



T.J., 2019



Isaiah, 2019







Studies



Anubis, 2018



Kourtney, 2018



Landon, 2018



Adrian, 2016



Macey, 2018



Jacob, 2017



Dashone, 2018



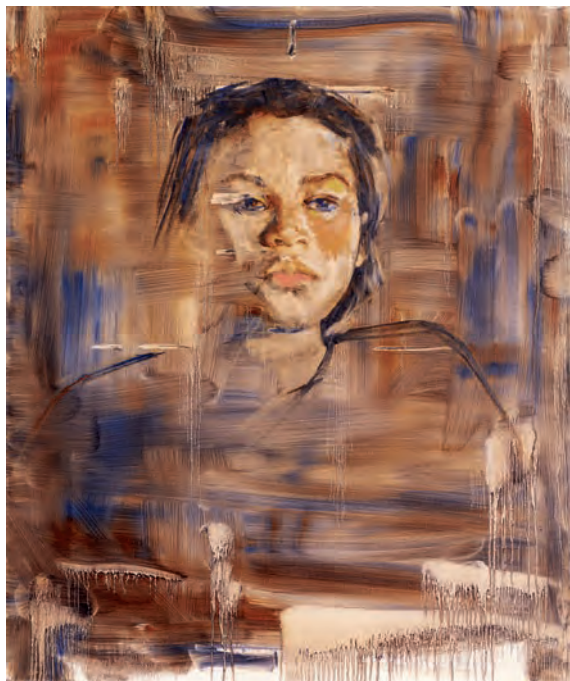
Andy, 2016



Lizeth, 2016



Isaiah, 2018



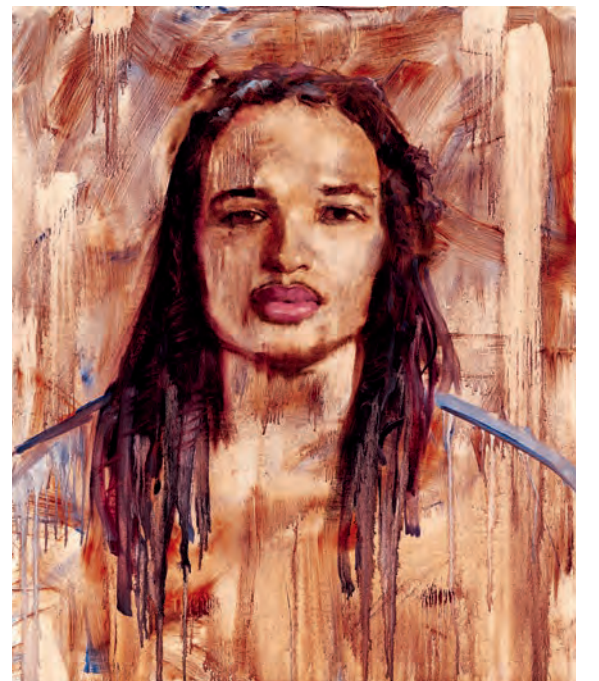
Summer, 2017



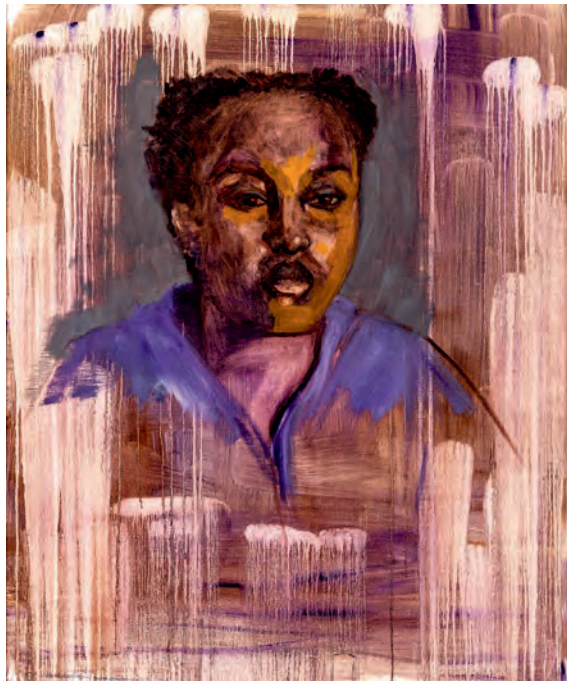
Telma, 2018



Lacherise, 2018



Kevin, 2018



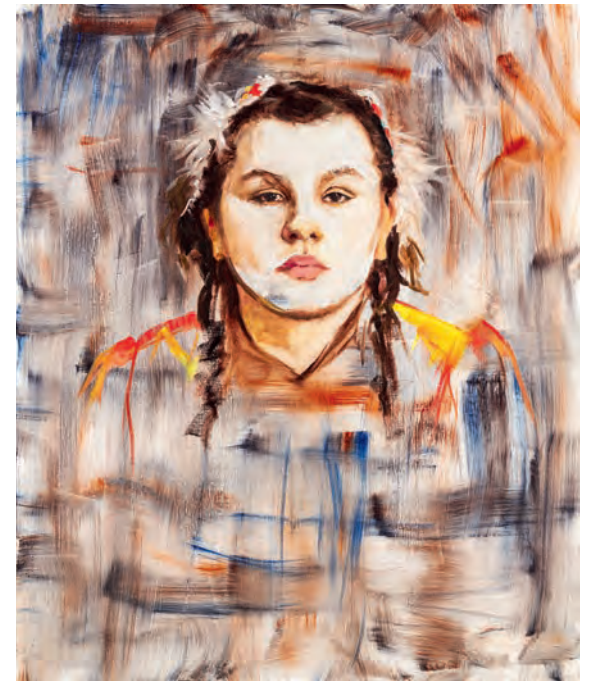
Ana, 2016



T.J., 2018



Shae, 2018



Amanda, 2018

Exhibition Checklist

Unaccompanied

Adrian 2017. Oil on linen panel, 44 x 64 in. (111.8 x 162.6 cm).
Amanda 2021. Oil on linen panel, 44 x 64 in. (111.8 x 162.6 cm).
Ana 2017. Oil on linen panel, 44 x 64 in. (111.8 x 162.6 cm).
Andy 2017. Oil on linen panel, 44 x 64 in. (111.8 x 162.6 cm).
Anubis 2021. Oil on linen panel, 44 x 64 in. (111.8 x 162.6 cm).
Celestina 2017. Oil on linen panel, 44 x 64 in. (111.8 x 162.6 cm).
Dashone 2020. Oil on linen panel, 44 x 64 in. (111.8 x 162.6 cm).

Isaiah 2019. Oil on linen panel, 44 x 64 in. (111.8 x 162.6 cm).
Jacob 2017. Oil on linen panel, 44 x 64 in. (111.8 x 162.6 cm).
Kevin 2020. Oil on linen panel, 44 x 64 in. (111.8 x 162.6 cm).
Kourtney 2019. Oil on linen panel, 44 x 64 in. (111.8 x 162.6 cm).
Lacherise 2022. Oil on linen panel, 44 x 64 in. (111.8 x 162.6 cm).
Landon 2022. Oil on linen panel, 44 x 64 in. (111.8 x 162.6 cm).
Lila 2017. Oil on linen panel, 44 x 64 in. (111.8 x 162.6 cm).

Lizeth 2017. Oil on linen panel, 44 x 64 in. (111.8 x 162.6 cm).
Macey 2022. Oil on linen panel, 44 x 64 in. (111.8 x 162.6 cm).
Shae 2021. Oil on linen panel, 44 x 64 in. (111.8 x 162.6 cm).
Summer 2017. Oil on linen panel, 44 x 64 in. (111.8 x 162.6 cm).
Telma 2020. Oil on linen panel, 44 x 64 in. (111.8 x 162.6 cm).
T.J. 2019. Oil on linen panel, 44 x 64 in. (111.8 x 162.6 cm).

Studies

Adrian 2016. Oil on linen panel, 30 x 36 in. (76.2 x 91.4 cm)
Amanda 2018. Oil on linen panel, 30 x 36 in. (76.2 x 91.4 cm)
Ana 2016. Oil on linen panel, 30 x 36 in. (76.2 x 91.4 cm)
Andy 2016. Oil on linen panel, 30 x 36 in. (76.2 x 91.4 cm)
Anubis 2018. Oil on linen panel, 30 x 36 in. (76.2 x 91.4 cm)
Dashone 2018. Oil on linen panel, 30 x 36 in. (76.2 x 91.4 cm)
Isaiah 2018. Oil on linen panel, 30 x 36 in. (76.2 x 91.4 cm)

Jacob 2017. Oil on linen panel, 30 x 36 in. (76.2 x 91.4 cm)
Kevin 2018. Oil on linen panel, 30 x 36 in. (76.2 x 91.4 cm)
Kourtney 2018. Oil on linen panel, 30 x 36 in. (76.2 x 91.4 cm)
Lacherise 2018. Oil on linen panel, 30 x 36 in. (76.2 x 91.4 cm)
Landon 2018. Oil on linen panel, 30 x 36 in. (76.2 x 91.4 cm)
Lizeth 2016. Oil on linen panel, 30 x 36 in. (76.2 x 91.4 cm)
Macey 2018. Oil on linen panel, 30 x 36 in. (76.2 x 91.4 cm)

Shae 2018. Oil on linen panel, 30 x 36 in. (76.2 x 91.4 cm)
Summer 2017. Oil on linen panel, 30 x 36 in. (76.2 x 91.4 cm)
Telma 2018. Oil on linen panel, 30 x 36 in. (76.2 x 91.4 cm)
T.J. 2018. Oil on linen panel, 30 x 36 in. (76.2 x 91.4 cm)



Joshua-Michéle Ross

Joshua-Michéle Ross is a sound artist whose work centers on time, ecology, and the restorative power of listening. He splits his time between Oakland and New York City. His current show is titled Séance To Summon A Garden and is supported by a Warhol Grant through an ongoing residency with Grand Central Art Center in Santa Ana, California. Ross has collaborated with Capshaw to create a sound experience that accompanies this exhibit.

joshuamicheleross.com

Collaborating Organizations

Capshaw collaborated with ten organizations for this project.

The Door

New York, New York

We empower young people to reach their potential by providing comprehensive youth development services in a diverse and caring environment. Young people between ages 12 and 24 can become Door members and get connected to all of our services. It's easy, free, and confidential.

door.org

Epworth Children & Family Services

St. Louis, Missouri

We empower youth to realize their unique potential by meeting essential needs, cultivating resiliency, and building community. Founded in 1864, Epworth serves thousands of youth and families each year with services including therapeutic foster care and case management; residential and intensive treatment; therapy and comprehensive psychological testing; emergency shelter and longer-term housing services; life skills and vocational training; as well as crisis care and outreach through the Drop-In Center, food pantry, and 24-hour crisis helpline.

epworth.org

Homeward NYC

New York, New York

We provide transitional housing for homeless young mothers and their children, non-time limited housing for LGBTQ+ young adults, and long-term housing for low-income and homeless

seniors. Collaborative and respectful care is a core value—residents are active participants in their own care, goal-setting, and achievements. We offer support services including case management, counseling, referrals, community-building activities, and life skills programs.

homeward.nyc

Larkin Street Youth Services

San Francisco, California

We create a continuum of services that inspire youth to move beyond the street. We nurture potential, promote dignity, and support bold steps by all. Our program offers instruction and mentoring in performing arts, visual arts, and design from our staff, community artists, and youth interns who host individual and group classes and workshops.

larkinstreetyouth.org

The Link

Minneapolis, Minnesota

We are a youth- and adult-led organization working to overcome the impacts of poverty and social injustice. Our 24 programs, often culturally specific, provide supportive services, emergency shelter, and housing to youth who are experiencing homelessness, sex trafficking, the juvenile justice system, and/or foster care systems. Project Live Out Loud is one of the few housing programs specifically for LGBTQ+ youth in the country.

thelinkmn.org

The Night Ministry

Chicago, Illinois

We provide human connection, housing support, and health care to those who are unhoused or experiencing poverty. We work alongside each individual to advocate for their immediate physical, emotional, and social needs while affirming our shared humanity.

thenightministry.org

Pine Ridge Girls' School

Porcupine, North Dakota

We radically change the trajectory of Lakota girls' lives by equipping them with vital foundations for a new and promising future full of choice and opportunity. We've developed The Science and Politics of Water, a replicable and one-of-a-kind curriculum that focuses on subjects important to Indigenous people everywhere and the Lakota in particular. It aims to create a whole generation of effective environmental champions, native scientists, and political activists.

pineridgegirlsschool.org

United States Interagency Council on Homelessness

Washington, D.C.

The U.S. Interagency Council on Homelessness (USICH) is the only federal agency whose sole mission is focused on preventing and ending homelessness in America. USICH works across federal, state, and local governments, as well as

the private sector, to help communities create partnerships, use resources in the most efficient and effective ways, and employ evidence-based best practices.

usich.gov

Violence Intervention Program (VIP) Community Mental Health Center

Los Angeles, California

We protect and treat all victims of family violence and sexual assault. For 30 years, VIP has continued to innovate in creating programs and systems that simplify the path to recovery for people experiencing abuse or neglect. Our work aims to cover the spectrum from child abuse to adult, elderly, and LGBTQ+ needs across Los Angeles County.

violenceinterventionprogram.org

Youthworks

Bismarck, North Dakota

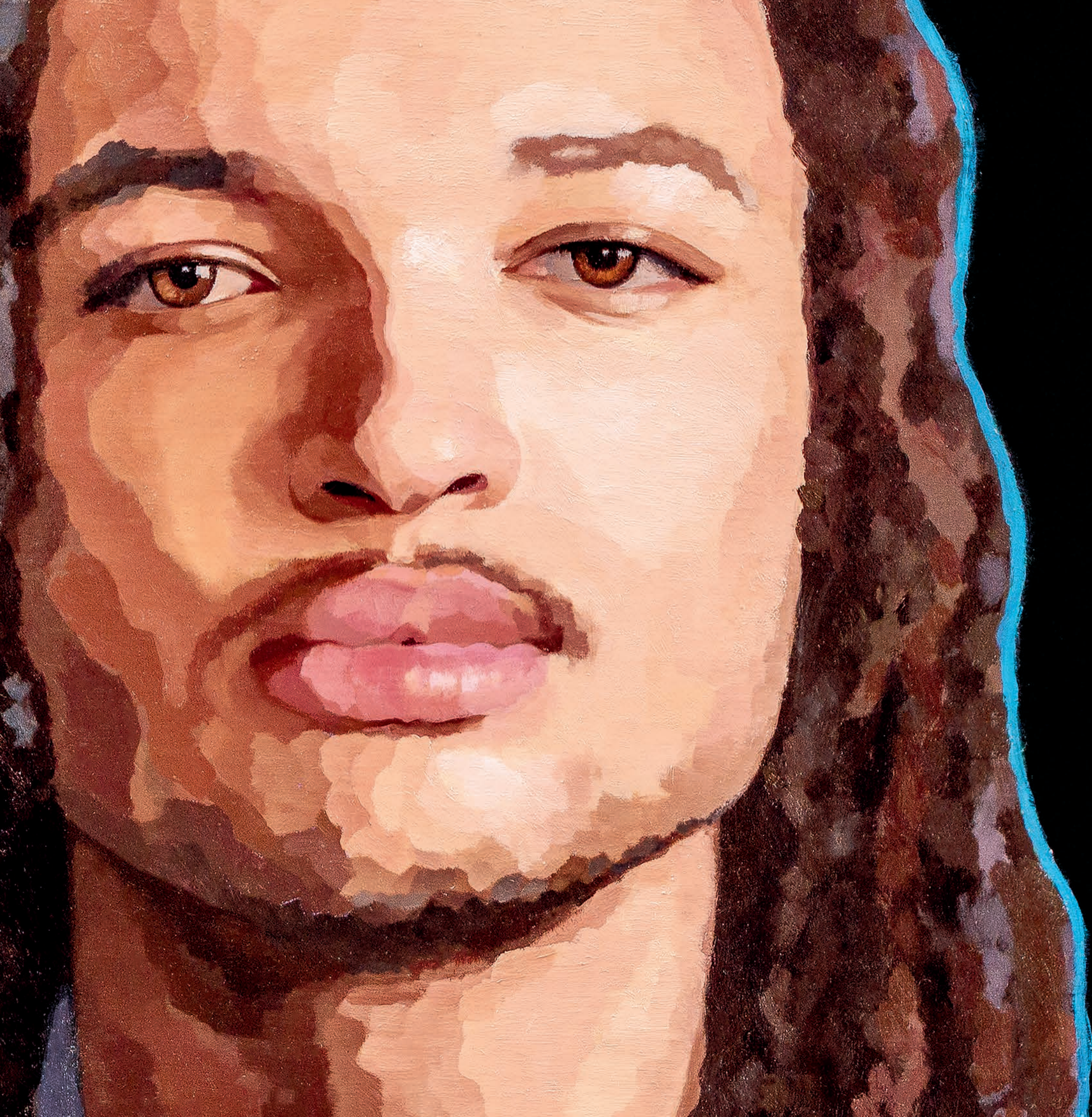
We help ensure that every youth has a safe place to belong and be heard, offering emergency shelter for youth under 18. Our programs, including Street Outreach, Transitional Housing, and Anti-Human Trafficking, provide a range of critical services to youth ages 24 and younger. Our services include providing food, winter gear, condoms, safe needle disposal, shelter, counseling, mentoring, life skills education, and intensive case management.

youthworksnd.org



The Bo Bartlett Center

The Bartlett Center at Columbus State University is a dynamic, creative learning laboratory that is part gallery, part experimental arts incubator, and part community center. Based on the belief that art can change lives, the center has a twofold mission: community outreach programs that help facilitate an inclusive environment by encouraging participation from diverse voices, and a national mission to partner with other institutions to provide innovative exhibitions that deepen our understanding of art through publications and public programming. It is a unique cultural institution that is taking a leadership role in the broader university and Columbus arts community and is creating a new paradigm for innovation and service. The center houses and displays the Scarborough Collection and 14 monumental paintings by artist and Columbus native Bo Bartlett, and often features rotating exhibitions of national and international acclaim.



The Bo Bartlett Center Staff

Rex Whiddon

Sr. Associate VP of Leadership
Philanthropy & Strategic Initiatives

Michael McFalls

Interim Director

Joshua Newbend

Gallery Coordinator

Ainsley Steeves

Gallery Attendant

Nathan Kersey

Graphic Designer

De’Sean Tucker

Graphic Designer

Thank you to our Exhibition Sponsors:

Sue Anne Baker
Sandy and Otis Scarborough
Dr. Patrick and Regina Fernicola
Will and Rachael Peek



THE BO BARTLETT CENTER
COLLEGE OF THE ARTS, COLUMBUS STATE UNIVERSITY





